



New Caledonia's lagoons, with their diverse reefs and associated ecosystems, were designated a UNESCO World Heritage site in 2008. The Natural Park of the Coral Sea protects these reefs and more than 50,000 square miles of marine ecosystems essential to the people, biodiversity and climate resilience of the Pacific islands.. This massive protected area ???



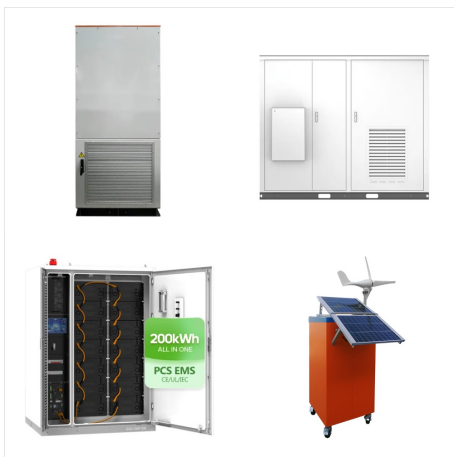
Ambrette Seed, Magnolia, Pear Water, Night Violet, Orris Butter, New Caledonia Sandalwood + White Amber See more: Liquid Volume: 1.7 Fluid Ounces: Kristin Ess ; Restore: Regardless of your hair type, it's always important to protect, hydrate + restore any level of damage. Whether you're heat styling or air-drying, there's something in



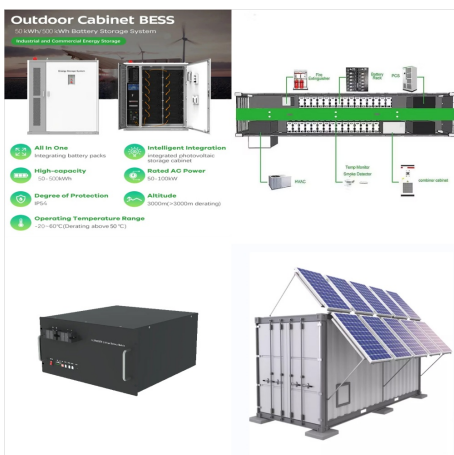
Shop Kristin Ess Dry Finish Working Texture Spray - 7oz at Target. Choose from Same Day Delivery, Drive Up or Order Pickup. magnolia, pear water, night violet, orris butter. new caledonia sandalwood + white amber. Hair Type: All Hair Types, Wavy. Health Facts: Paraben-Free. Product Warning: Adult Use Only. it is a versatile product



What type of vehicle should I rent? In New Caledonia, 4x4s and pick-up trucks are prevalent. However, your choice should align with your travel plans. If you intend to stick to paved roads, consider a two-wheel-drive vehicle, preferably with good ground clearance. Road rules in New Caledonia are identical to those in France: drive on the



Shop Kristin Ess Signature Conditioner, Sulfate Free and Color Safe - Travel Size - 2 fl oz at Target. orris butter. new caledonia sandalwood + white amber. Scent: Pear, Sandalwood, Magnolia, Amber. Hair Type: All Hair Types. Trial/Mini/Travel Size: Yes. Health Facts: Sulfate-Free, Phthalate-Free, Paraben-Free. Product Form suitable for



Shop Kristin Ess The One Signature Shampoo at Target. night violet, orris butter. new caledonia sandalwood + white amber. Scent: Sandalwood, Pear, Magnolia, Amber. Hair Type: All Hair Types. Trial/Mini enhancing its natural ???



NEW CALEDONIA Types of 1928-40, without "RF"  
 Issued by the Vichy Government 1944 60C Kagu  
 Issues of 1942 Surcharged 1945-46 60 CON ON 5  
 70C CON 5 1.20FR CON 5C 2.40FR ON 25 3  
 FRFRON 25 C 4.50 ON 25 C 15 2.50 FR Eboue  
 Issue 1945 25FR 10 50C 5C 2FR. NEW  
 CALEDONIA Kagus, Ducos Sanatorium, Porcupine  
 Isle, Nickel Foundry 1948 30 C40 50 C60 80



Download scientific diagram | Different types of ESS  
 technologies for distribution networks. from  
 publication: Overview of energy storage systems in  
 distribution networks: Placement, sizing



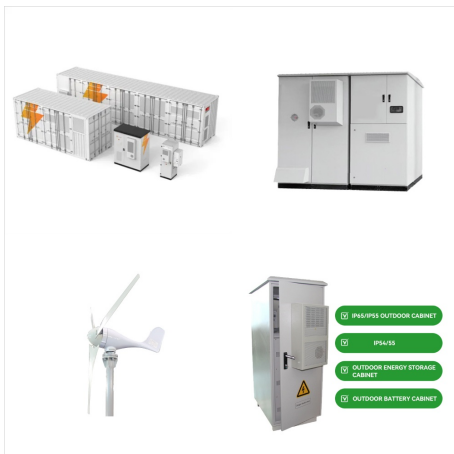
3.1 WHAT IS ESS? The ESS definition given by  
 DOD-HDBK-344 (USAF) [1, p. 1] is as follows: "ESS  
 is a process or series of processes in which  
 environmental stimuli, such as rapid thermal cycling  
 and random vibration, are applied to electronic  
 items in order to precipitate latent defects to early  
 failures."



Residential ESS. Solar Off-Grid Battery Backup;  
SUN Series (US-Standard) SUN Series  
(Euro-Standard) RBmax5.1; All >> Commercial &  
Industrial ESS. C& I ESS; Mobile ESS; Diesel  
Generator ESS; All >> Truck All-Electric APU. ???



Residential ESS. Solar Off-Grid Battery Backup;  
SUN Series (US-Standard) SUN Series  
(Euro-Standard) RBmax5.1; All >> Commercial &  
Industrial ESS. C& I ESS; Mobile ESS; Diesel  
Generator ESS; All >> Truck All-Electric APU.  
Variable-speed HVAC; LiFePO4 Battery Pack;  
DC-DC Converter; 48 V Alternator; All >> Marine  
ESS. LiFePO4 battery; 48V DC Air



4.1 FLAW-STIMULUS RELATIONSHIPS. Before  
discussing the flaw-stimulus relationships, two  
defect definitions need to be clarified, namely,  
patent defect and latent defect. A patent defect is a  
flaw which has advanced to the point where an  
anomaly actually exists or it can be defined in terms  
of an out-of-tolerance, or a specification, condition  
which can be readily detected by an ???





New developments. Genex; SFM smartline; smartline; Technologies; B+S Services Deutsch; English; Suchwort Labeling and assembly machine Machine type ESS 1001. Labeling machine ESS 1001 applies self-adhesive labels off ???



The LIVOLTEK BHF-X Series is a versatile solution applicable to charging stations, factories, industrial parks, and commercial buildings. Designed for power storage, models BHF-X193/209/225 enable emergency power during outages, peak-load shifting, surplus energy trading, and virtual capacity enhancements.



- Kristin Ess ; Dry Styling + Finishing: Finish is everything. These will be your go-to's for adding texture, shine, hold + definition to any style you create. These were designed to be used on dry, finished hair, whether it's heat styled or not. For all hair types, Brushable texture, Heat protecting, Style shaping, Light + layerable



Welcome to the world of fishing in New Caledonia, an archipelago of islands, with the 400-kilometre-long Grande Terre as its main attraction. Nestled in tropical waters protected by the barrier reef, New Caledonia offers a rich and diverse fishing experience. Fishing is not just a pastime here; it's deeply woven into the fabric of Caledonian



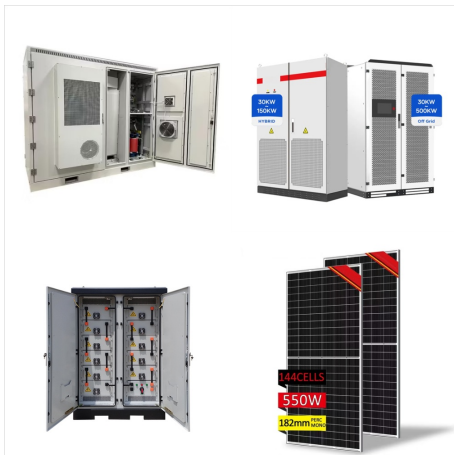
If you're planning a trip to New Caledonia and curious about the accommodation choices available, you're in for a delightful surprise. The range of accommodations on Grande Terre and the surrounding islands is extensive and diverse, catering to every preference and budget. Whether you're into camping beneath the stars, indulging in international resort luxury, ???



The One Signature contains notes of ambrette seed, magnolia, pear water, night violet, orris butter, New Caledonia sandalwood and white amber. SULFATE-FREE: The One Signature Shampoo and Conditioner from Kristen Ess Hair is a sulfate-free product that leaves your hair super clean and feeling moisturized and looking shiny.



New! AI Engineering Assistant (ESS) methods and applications, as well as theoretical aspects such as history and evolution, definitions, and various types of ESS. TABLE OF CONTENTS . Environmental Stress Screening Its Quantification, Optimization, and Management.



Shop Kristin Ess The One Signature Shampoo at Target. night violet, orris butter. new caledonia sandalwood + white amber. Scent: Sandalwood, Pear, Magnolia, Amber. Hair Type: All Hair Types. Trial/Mini enhancing its natural shine and softness. With a formula that's both gentle and effective, it suits a range of hair types, including



Many types of varied terrain create an ideal environment for highly concentrated biodiversity to develop. Currently, the count is over 9,372 distinct species (that's all in an island chain smaller than the Hawai"ian islands!). Crested geckos ???



On 5 March 2024, the Pacific Community (SPC) celebrates the 75th anniversary of its headquarters in Noumea, New Caledonia, and its ongoing relationships with the recent renewal of our shared partnership agreement with the New Caledonia Government signed on the 24th of November 2023. This story is dedicated to recognising the 75th Anniversary of the Pacific ???



General Census of Agriculture is the second undertaken in New Caledonia; the first one was conducted in 1983-84. Organization: (depending on the type of animal), or a certain level of agricultural output, or an agricultural activity for home consumption in the contest of the



American ESS Our all-in-one energy system with inverter offers a 51.2V lithium battery for superior performance. Ideal for 48V lithium ion battery systems, lifepo4 battery setups, and solar battery applications.





Noumea, New Caledonia Noumea or Suva-based position Attractive expatriate package Join the principal development organisation in the region Description The Pacific Community (SPC) is the principal scientific and technical organisation in the Pacific region, supporting devel



Revision notes on Types of System for the DP IB Environmental Systems & Societies (ESS) syllabus, written by the Environmental Systems & Societies (ESS) experts at Save My Exams. (the environment) by taking in energy and new matter (often in the form of biomass), and by also expelling energy and matter (e.g. through waste products or by



PURA D'OR 16 Oz Moisture Protect Cleansing Conditioner - Low Lather - Detangles & Restores Hair with Argan Oil, Lavender & Other Select Natural Ingredients, No Sulfates - All Hair Types - Men & Women Kristin Ess Hair Castor Oil Leave In Conditioner Spray - Sulfate Free + Color Safe - Weightless Shine - Deep Repair Moisturizing Detangler Spray



Hair Type: Dry: Material Type Free: Sulfates Free, Parabens Free, Phthalates Free: Scent: The One Signature (ambrette seed, magnolia, pear water, night violet, orris butter, new caledonia sandalwood + white amber) See more: Liquid Volume: 7.5 Fluid Ounces