

What can you see on a night sky map?

The map includes the Moon, stars brighter than magnitude 5, the five bright planets (Mercury, Venus, Mars, Jupiter, and Saturn), and deep-sky objects that can be seen without the use of optical aid. How Do I Use the Interactive Sky Chart to Explore the Night Sky? Learn sky chart basics in our short tutorial:

What is a night sky map?

Whether you're using just your eyes, binoculars, or a telescope, the night sky offers endless wonders waiting to be discovered. Happy stargazing! This skymap is a dynamic visualization that displays the positions of celestial objects in the night sky for your specific location on the current date.

How do I see the International Space Station crossing the sky?

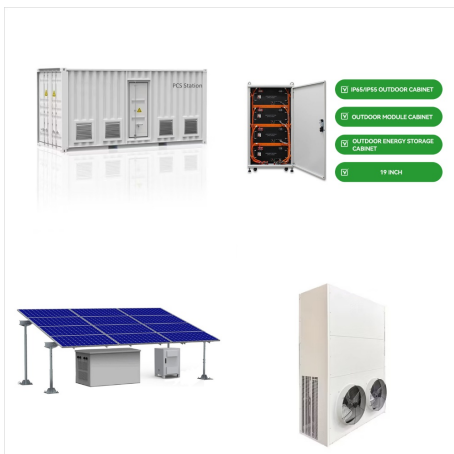
Click your location on the map to check on viewing condition predictions in your area. Navigate the night sky. Download a sky map for the current month. Choose your state, then city to see when the International Space Station can be seen crossing the sky. Bookmark this page as your one-stop planning resource for astronomy events.



Want a map of tonight's sky for your location? We recommend Stellarium, available on the web and for mobile devices. When you think about how the Moon looks in the night sky, you might never have considered that it looks different to people in other parts of the world. But really, perspective is all relative.



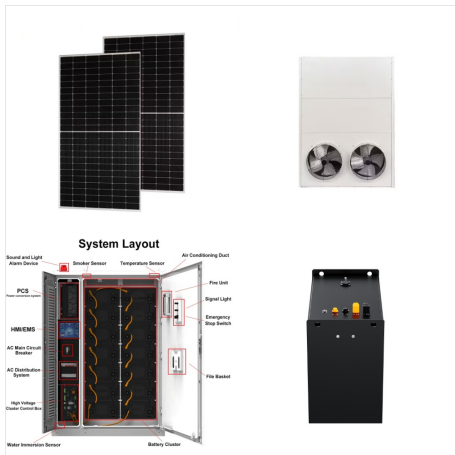
Our Interactive Night Sky Map simulates the sky above St. Louis. The Moon and planets have been enlarged slightly for clarity. The Moon and planets have been enlarged slightly for clarity. On mobile devices, tap to steer the map by pointing your device at the sky.



Our Interactive Night Sky Map simulates the sky above Melbourne. The Moon and planets have been enlarged slightly for clarity. The Moon and planets have been enlarged slightly for clarity. On mobile devices, tap to steer the map by pointing your device at the sky.



Click for detailed info, and an Interactive Meteor Shower Sky Map. Meteor Shower Calendar 2024 Use our guide to find the best time to see shooting stars from your location, and explore our Interactive Meteor Shower Sky Maps.



Discover celestial objects visible tonight from your current location. Our guide automatically shows planets, stars, nebulae, and spacecraft flyovers you can see right now. Explore the night sky ???



Dark Sky Map. My ambition is to make astronomy accessible to everyone. In this quest, I invite you to explore a map that helps you find the best places to observe the night sky as well as a map of light pollution as a decision making tool.



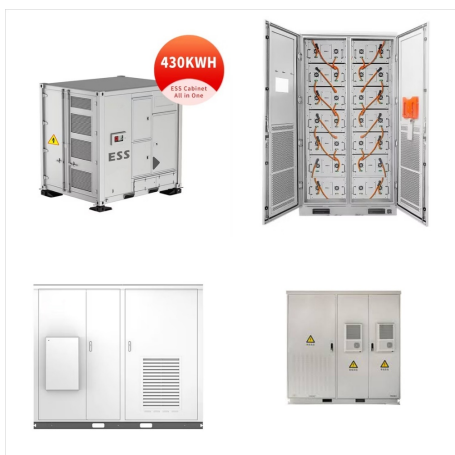
Astronomy news and interactive guides to the night sky from In-The-Sky . Astronomy news and interactive guides to the night sky from In-The-Sky . In-The-Sky . Guides to the night sky. Location: Virginia Beach (36.85°N; 75.98°W) News Upcoming events By topic. Appulses; Asteroids; Comets; Conjunctions; The Deep Sky; The Dwarf Planets



All-sky charts of the night sky from In-The-Sky , showing what stars and planets you'll be able to see in the night sky on any given day of the year. Location: Virginia Beach (36.85°N; 75.98°W) Charts of the Night Sky. Home Charts. News Upcoming events



Free Night sky map & custom star map. Night sky map and star map for free. Now you can easily create a personalized custom star map that shows the alignment of the stars on the date and location of your choice. Scroll down to setup your location, date and time to generate and download your custom star map online.



Current Night Sky ; Sky chart showing the location of Comet C/2023 A3 between Oct. 14 and Oct 24 following sunset. The comet climbs higher each evening, but also grows fainter. NASA/JPL-Caltech. October offers a chance to observe what could be the brightest comet of the year. Earlier this year we got a look at Comet 12P, which was visible



Sky Tonight is more minimalistic than Star Walk 2. Unlike Star Walk 2, Sky Tonight doesn't have the Sky Live section. But it features an updated Visible Tonight section. Sky Tonight gives access to all space objects and features for free. Sky Tonight includes asterisms, more stars, and ???



An online planetarium from In-The-Sky , showing what stars and planets you'll be able to see in the night sky on any given day of the year. An online planetarium from In-The-Sky , showing what stars and planets you'll be able to see in the night sky on any given day of the year. Location: Virginia Beach (36.85°N; 75.98°W) Online



Clocks will be set backward by one hour at 2 a.m. local time on Sunday, Nov. 3. (Image credit: Chris Vaughan/Starry Night) For jurisdictions that adopt Daylight Saving Time (DST), clocks should be



What's In The Night Sky Tonight From My Location?

There are a lot of variables at play in working out what might be above you in the night sky tonight (and at what time and direction). The easiest way is therefore to use a digital platform (website or mobile app) that takes into account your location and date and provides a picture of the



All Sky Chart. This all sky chart shows the sky above your location and is updated in realtime. Please note that this map does not reflect the actual lighting conditions and it shows the main astronomical objects even during daylight. Stars up to magnitude 5 and Solar System objects brighter than magnitude 10 are shown in the chart.



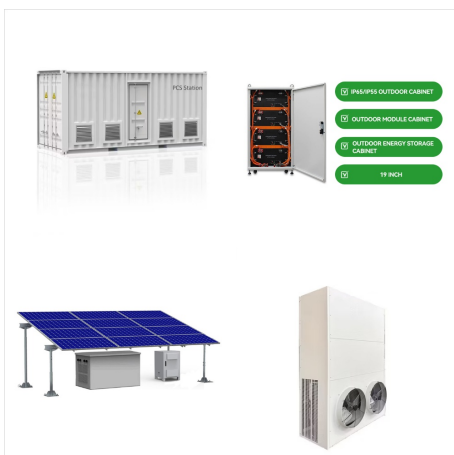
Our Interactive Night Sky Map simulates the sky above Great Britain. The Moon and planets have been enlarged slightly for clarity. The Moon and planets have been enlarged slightly for clarity. On mobile devices, tap to steer the map by pointing your device at the sky.



? Every evening, the stars in the sky return to the same place 4 minutes early because the Earth's movement in its orbit around the sun gives us a slightly different background of stars each night. These 4 minutes represent the difference between the length of a day (24 hours) and that of an earth's rotation (23 hours and 56 minutes).



Find out which planets are visible in the night sky tonight. Get tips on the best viewing times and directions for observing planets with the naked eye. is a dynamic visualization that displays the positions of planets within the constellation boundaries for your specific location on the current date. Interactively explore the celestial



Discover celestial objects visible tonight from your current location. Our guide automatically shows planets, stars, nebulae, and spacecraft flyovers you can see right now. Explore the night sky with up-to-date data specific to where you are! Sky Tonight. ST. VA, US 36.7°/-78.4° GMT -5



The ZHR value refers to the Zenithal Hourly Rate, i.e. the average number of meteors an individual observer could see in an hour, assuming perfectly dark sky conditions. This number is an estimate, the number an observer could see in real conditions depends on the actual intensity of the shower (which can be highly variable) and on the sky conditions.



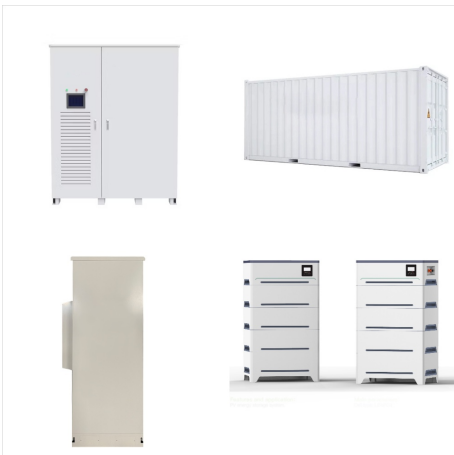
Our Interactive Night Sky Map simulates the sky above The Telescope. The Moon and planets have been enlarged slightly for clarity. The Moon and planets have been enlarged slightly for clarity. On mobile devices, tap to steer the map by pointing your device at the sky.



Our Interactive Night Sky Map simulates the sky above New Zealand. The Moon and planets have been enlarged slightly for clarity. The Moon and planets have been enlarged slightly for clarity. On mobile devices, tap to steer the map by pointing your device at the sky.



Explore the night sky tonight from your location. Try this exquisite stargazing tool. Take an effortless journey through thousands of stars, planets and constellations. on date night, but they may not know what they're looking at. Star Walk 2 makes the experience of observing the night sky together much more informative. The astronomy app



Location. Enter Zip code Enter manually: Date & Time. Year. Month. Day. Use 24h clock format Hour. am -1 day-1 hour-1 min. Now +1 min. +1 hour +1 day: Display Options. Star names Planet names Deep-sky objects: Constellation names Constellation lines Constellation boundaries: Ecliptic Celestial equator Buildings & trees: Show daylight: