

Who is Niigata Power Systems?

NIIGATA Power Systems Co.,Ltd. is established,taking over the "engines and turbines" business from Niigata Engineering to IHI. The company name is changed from "Ishikawajima-Harima Heavy Industries Co.,Ltd" to "IHI Corporation". The production total attains 35 million PS. The number of reciprocating engine production attained 40,000 sets.

Who owns Niigata gas turbine plant?

Niigata gas turbine plant is established. NIIGATA Power Systems Co.,Ltd. is established,taking over the "engines and turbines" business from Niigata Engineering to IHI. The company name is changed from "Ishikawajima-Harima Heavy Industries Co.,Ltd" to "IHI Corporation". The production total attains 35 million PS.

What is Niigata Engineering?

Niigata Engineering is established as engineering plant of Nippon Oil Co., Ltd. The Niigata's first own designed diesel engine is developed as the first industrial diesel engine in Japan. Ishikawajima Heavy Industries Co.,Ltd. and Harima Shipbuilding &Engineering Co.,Ltd. merge to establish Ishikawajima-Harima Heavy Industries Co.,Ltd. (IHI).

What is the history of Niigata diesel engine?

The Niigata's first own designed diesel engine is developed as the first industrial diesel engine in Japan. Ishikawajima Heavy Industries Co.,Ltd. and Harima Shipbuilding &Engineering Co.,Ltd. merge to establish Ishikawajima-Harima Heavy Industries Co.,Ltd. (IHI). Niigata engine plant and Niigata foundry plant are established.

Which company is established by merger of IHI and Niigata?

Ohta plant is established. Diesel United,Ltd.(DU) was established by merger of Diesel Engines Divisions of IHI and SHI. Niigata gas turbine plant is established. NIIGATA Power Systems Co.,Ltd. is established,taking over the "engines and turbines" business from Niigata Engineering to IHI.

What is the difference between Niigata Engineering & Ishikawajima Shipyard?

Ishikawajima Shipyard is established. Niigata Engineering is established as engineering plant of Nippon Oil Co., Ltd. The Niigata's first own designed diesel engine is developed as the first industrial diesel engine in Japan.



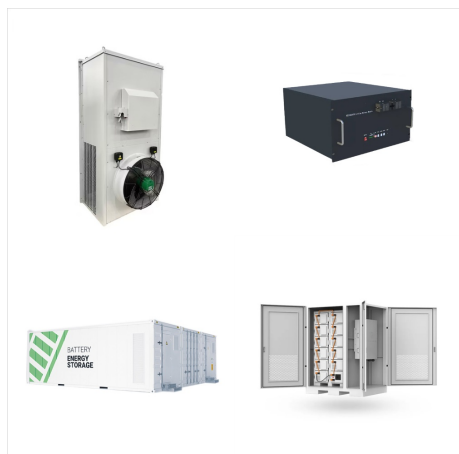
Written by Rose Felipe - NIIGATA has developed as a leading Japanese manufacturer of diesel engines and technologies for over 100 years. Niigata has land-based engines for power plants and other such applications as well as marine propulsion and auxiliary engines for marine vessels. BJ MARTEL INTERNATIONAL, INC (BJMII) has been NIIGATA ???



F?hrungskr?fte Niigata Power Systems (Europe) B.V. Liste mit F?hrungskr?ften herunterladen. Mr K. Hayashi. Management / Leitung. Allgemeine Informationen: Niigata Power Systems (Europe) B.V. BV: Beschreiben Sie Ihr Unternehmen und gewinnen Sie neue Gesch?ftskontakte (SBI08) Handelsbemiddeling in machines, technische benodigdheden



Government customs records and notifications available for Niigata Power Systems (Europe) B.V. in Ukraine. See their past export from ""??? 3/4 ?? """"???? ??? 1/2 ?? ????? ???u?????????????? 1/4 ?(R)?????u??? 1/2 """"""", an importer based in Ukraine. Follow future shipping activity from Niigata Power Systems (Europe) B.V..



Niigata Power Systems Phils., Inc. is a company under IHI group of companies providing mechanical Niigata Power Systems Phils. Inc, Para?aque. 522 likes ? 1 talking about this ? 2 were here. Niigata Power Systems Phils., Inc. is a ???



Niigata Power Systems (Europe) BV Beursplein 37, Niigata Power Systems (Europe) BV; Rotterdam; THE NETHERLANDS +31 10 4053085 +31 10 4055067 Sales Department . The company designs and manufactures a variety of gas and diesel engines ranging in size from 100hp to 29,700hp, including engines for power generation, marine and



Niigata has been providing environment friendly stationary gas engines as well utilizing state of the art technology developed and learnt from diesel engine experiences. The gas engines are contributing to stable power supply with world top class performance of low emission, high efficiency and saving time for loading up to full power together



NIIGATA POWER SYSTEMS (EUROPE) B.V. was included in the global trader database of NBD Trade Data on 2021-02-24. It is the first time for NIIGATA POWER SYSTEMS (EUROPE) B.V. to appear in the customs data of the JAPAN, and at present, NBD Customs Data system has included 22 customs import and export records related to it, and among the trade partners of ???



If you represent Niigata Power Systems (Europe) BV and would like to update this information then use this link: [update Niigata Power Systems \(Europe\) BV information](#). 1755 reads Add new comment



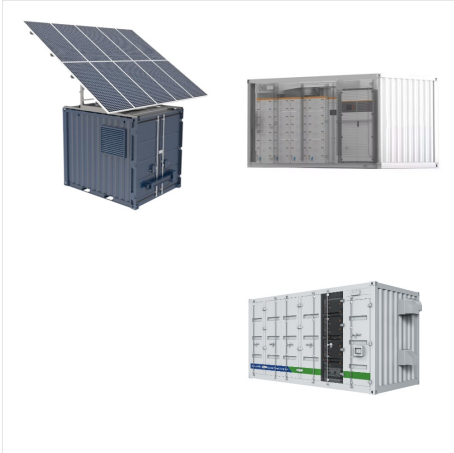
Niigata Power Systems (Europe) BV; Rotterdam;
THE NETHERLANDS +31 10 4053085 +31 10
4055067 Sales Department . The company designs
and manufactures a variety of gas and diesel
engines ranging in size from 100hp to 29,700hp,
including engines for power generation, marine and
railcars. In addition, Niigata manufactures
turbocharger, couplings



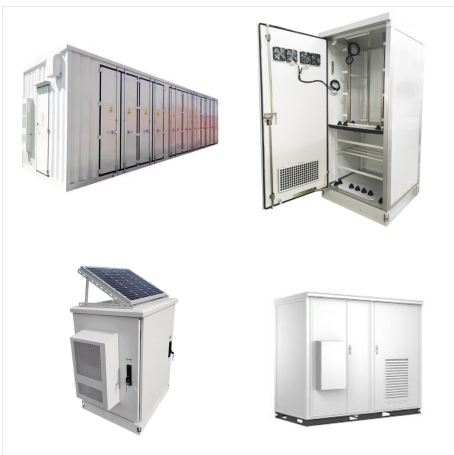
NETHERLANDS? 1/4 ?Niigata Power Systems? 1/4
?Europe? 1/4 ?B.V. RM478. Beursplein 37 3011 AA
Rotterdam The Netherlands. TEL? 1/4
?+31(10)405-3085. GERMANY? 1/4 ?IHI Charging
Systems International GmbH. Wolff-Knippenberg
Strasse 2, 99334 Amt Wachsenburg OT
Ichtershausen, GERMANY. TEL? 1/4
?+49(3628)5813-0.



Niigata Power Systems (Europe) B.V. (IHI Power
Systems Co., Ltd.): Mr.Yasuo Kino, Managing
Director ??>>Face masks were removed
immediately prior to the photo. IHI Power Systems
Co., Ltd. Administration Division Telephone:
+81-3-4366-1203; email: ips-webmaster1@ihi-g .



Niigata Power Systems Phils., Inc. is a company under IHI group of companies providing mechanical Niigata Power Systems Phils. Inc, Para?aque. 522 likes ? 1 talking about this ? 2 were here. Niigata Power Systems Phils., Inc. is a company under IHI



Mitsubishi Equipment Europe (21) N; Niigata Power Systems (1) P; Perkins Marine Power (4) Y; Yanmar Europe BV (5) Submit. Types. auxiliary (41) inboard (41) propulsion (6) Submit. Power source. diesel (40) electric (6) Yanmar Europe BV. inboard engine 6BT5.9. auxiliary diesel professional vessel. Contact. inboard engine. 6BT5.9.



Power: 485 kW - 6,300 kW Engine speed: 720 rpm - 1,500 rpm Bore: 160 mm - 300 mm. Durable, Firm and Stable Operation Highly Reputed Niigata diesel generators are reputed as economical and stable machines based on long term marine engines experience. Especially main engine



Niigata Power Systems Co. Ltd, 9-7 YAESU 2-
CHOME, CHUO-KU, TOKYO 104-0028:
Oprichtingsjaar: 1976: Juridische vorm: BV: Activity
(SBI08) Handelsbemiddeling in machines,
technische benodigdheden, schepen en vliegtuigen
(4614)



Seawork 10th - 12th June 2025 Speed@Seawork
9th June 2025 Get Set for Workboat 2050; The 26th
edition of Europe's largest commercial marine and
workboat exhibition provides businesses the
opportunity to showcase their services, equipment,
vessels and ???



The global diesel ship engine market is expected to
grow at a CAGR of 3.5% during the forecast period,
to reach USD 2.2 billion by 2030. The growth of this
market is driven by the increasing demand for diesel
engines in fishing boats and cruise ships, as well as
the growing demand for commercial ships in Asia
Pacific and Europe.



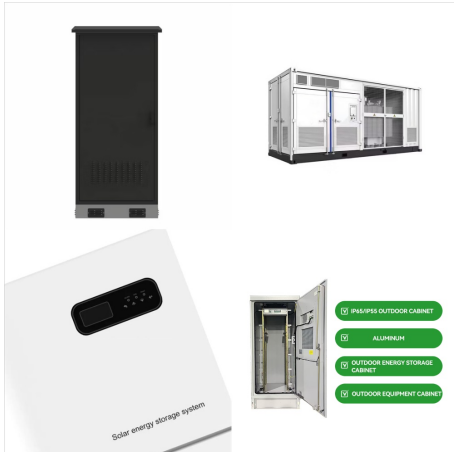
Niigata. Creators of the first industrial diesel engine in Japan in 1919, Niigata Propulsion was founded in 1910 and quickly became known as engineering experts. In the early 2000s, Niigata expanded their operations to include engines for marine vessels, which are ???



Government customs records and notifications available for Niigata Power Systems(Europe) B.V in Colombia. See their past export from Agentes Maritimos Especializados S.A.S., an importer based in Colombia. Follow future shipping activity from Niigata Power Systems(Europe) B.V.



"Systems" shall mean all of the systems provided through the Owners"NET internet portal site for customers, including the e-Parts system, which is a parts sales mediation system for products that the Company manufactures and supplies.



?????(C)????? : Niigata Power Systems? 1/4
?Europe? 1/4 ?B.V. RM478. Beursplein 37 3011 AA
Rotterdam The Netherlands. TEL? 1/4
?+31(10)405-3085. ?????????????? : Niigata
Power Systems Philippines, Inc. 2nd Floor, BJ
Marthel Building, No.5 Ascie Avanne,Km.16 West
???



NIIGATA. Z-PELLER (R) Azimuth Thruster. Durable
Azimuth Propeller with Super Maneuverability in all
harbors & Oceans. 50 years-long experience since
first Z-PELLER (R) production, the azimuth thrusters
have continuously progressed with world economic
growth under own technology and lots of feedback
from operators around the world. Due to its stable
and high maneuverability ???



ExxonMobil is a trusted partner for thousands of
industrial original equipment manufacturers. They
know our products will help keep their machines
running longer and more efficiently. See below for
relevant equipment and product information for
Niigata Power Systems.