

Why is my Nissan Leaf service EV system - no power?

If you suspect a TCU issue, consult a professional technician for help. When your Nissan Leaf displays the error message "Service EV System - No Power" on your dashboard, it indicates that there's an issue with the vehicle's electrical system.

Can a Nissan Leaf be towed in neutral?

If your Nissan Leaf has completely lost power and is stuck in an unsafe location, it's crucial to call for a tow. Unique among electric vehicles, the Leaf typically can't be towed in neutral. Since putting it in neutral is not always possible, ensure that you inform the tow company that your vehicle is an EV.

Can a 12 volt battery be charged if a leaf is plugged in?

Some Leafs - not all of them - don't do a good job of keeping the 12 volt battery charged. If your car is sitting plugged in after charging ends for ~6 hours a night, most nights, that could do it. I suggest that you try to set the charge timer to finish charging right before you leave in the morning.

What is the HV battery status in leafspy pro?

The relevant codes are: P3180 970B EV/HEV HV Battery System EVC-249 P317E 970B EV/HEV HV Battery System EVC-249 P33A5 8308 HV Battery The HV battery status in LeafSpy Pro looks fine- 94% SOH and less than 10mV cell variation.



A combination of the Leaf not being designed well to give an exact diagnostic code of the failure and technicians not being familiar with the Leaf usually results in them swapping far more parts than is actually needed. Enjoy the fact that it's under warranty--they're going to have to pay for all the perfectly good parts they swap out.

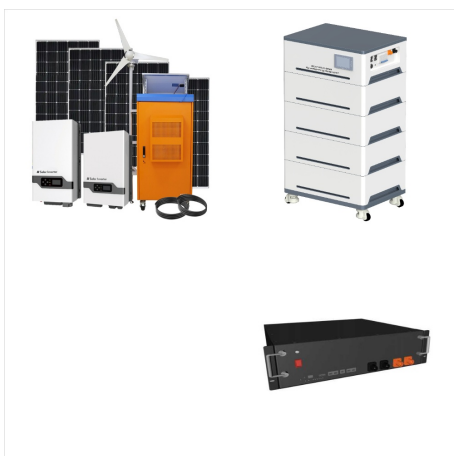
NISSAN LEAF SERVICE EV SYSTEM NO POWER



Nissan Leaf 2018 ZE1 service ev system no power in red. Thread starter oddmar; Start date Jun 20, 2023; Help Support My Nissan Leaf Forum: Service ev system no power. jstroud48; Mar 10, 2024; Problems / Troubleshooting; Replies 2 Views 2K. Apr 8, 2024. jstroud48. J. D. EV System Warning Light. DunanyDon;



It powers on but has red service ev system no power warning - Answered by a verified Nissan Mechanic. Hello Arthur, I'm sorry to hear that your 2018 Nissan Leaf has a power issue and a service EV system warning. This could indicate a problem with the battery, the charging unit, the electric motor, or the electrical energy management



I have experienced a similar issue "service EV system, power reduced stop safely", "no power, stop safely", "service EV system, no power" for 4 times in the past 3 months. The car basically wouldn't start. 1st time: local Nissan Torrance dealer cleared the code and it drove again 2nd time: replaced the 12V battery and it drove again

NISSAN LEAF SERVICE EV SYSTEM NO POWER



My Leaf displayed Warning Service EV System, Warning Service EV System Unable to restart after power off. tonight. Battery is 100% charged according to the dash display but the Battery symbol at the top right side of the dash is illuminated as are the warning lights for front and rear hazards. The vehicle is a 2021 Leaf S Plus.



If you have not please join our official My Nissan Leaf Facebook Group! Nissan Leaf Facebook Group. Nissan Leaf Ownership. Problems / Troubleshooting Service ev system no power. jstroud48; Mar 10, 2024; Problems / Troubleshooting; Replies 2 Views 1K. Apr 8, 2024. jstroud48. J. A. 2014 Leaf S random sudden shut-off.



NISSAN LEAF SERVICE EV SYSTEM:
TROUBLESHOOTING POWER ISSUES. Thank you for holding Merri! It sounds like you may have another issue with low voltage and the dealer at the time thought it may have been just the battery so they replaced it.

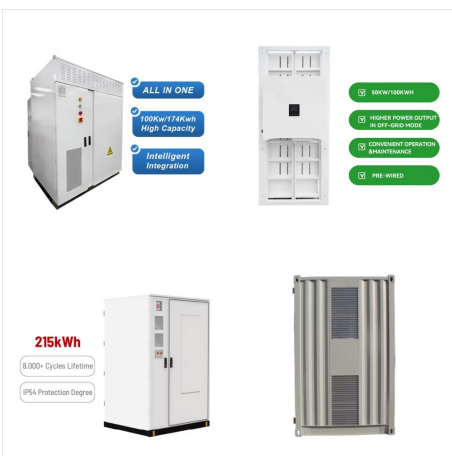
NISSAN LEAF SERVICE EV SYSTEM NO POWER



A place to discuss the Nissan LEAF electric vehicle Members Online Service EV system, No power UPDATE . So wanted to give you all a wee update on my 2022 Leaf e+ as it's been a couple of weeks since my original post about it breaking down for the 2nd time with the same fault after it was supposed to be fixed. So took car into dealer about



30kWh batteries were easily the worst ones and the 2nd gens seem to be better for degradation. Also, from the bit of info I've seen on 2nd gens losing a bar, it looks like they only drop the 1st bar at around 81-82% now.

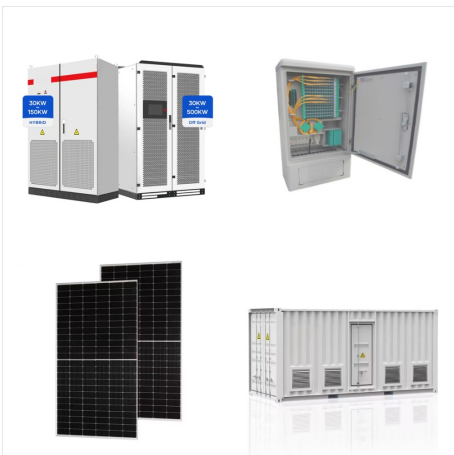


I had a similar message (2022 SV+)Service EV System, Power Reduced. Mine has been at the dealer for 5 weeks now ????. They replaced a battery module, and are currently waiting for a cell/module balancing machine. Hope your's turns out to be the 12V battery like MaineGal

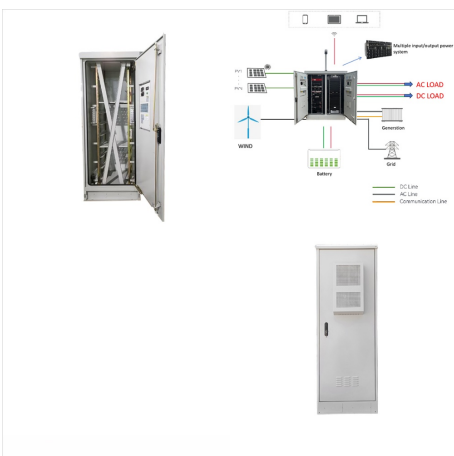
NISSAN LEAF SERVICE EV SYSTEM NO POWER



If you have not please join our official My Nissan Leaf Facebook Group! Nissan Leaf Facebook Group. Nissan Leaf Ownership. Problems / Troubleshooting . Leaf Service EV System Adventures with P0AA6-1A and a Suspect 12V Battery They tried to start their Leaf in the early hours and got the dreaded "Service EV System No Power" screen. I wouldn



I have experienced a issue "service EV system, power reduced stop safely", "no power, stop safely", "service EV system, no power" for 4 times in the past 3 months. The car basically wouldn't start. 1st time: local Nissan Torrance dealer cleared the code and it drove again 2nd time: replaced the 12V battery and it drove again



LEAF; EV BATTERY WARNING LIGHT ON AND DTC B2902-42 STORED APPLIED VEHICLES: 2018-2019 LEAF (ZE1) APPLIED VIN: Vehicles built before 1N4AZ1(*)*)(*)KC306826 APPLIED DATE: Vehicles built before January 8, 2019 APPLIED SYSTEM: Vehicles equipped with a 40 kWh lithium-ion battery IF YOU CONFIRM The EV Battery warning light is ON AND

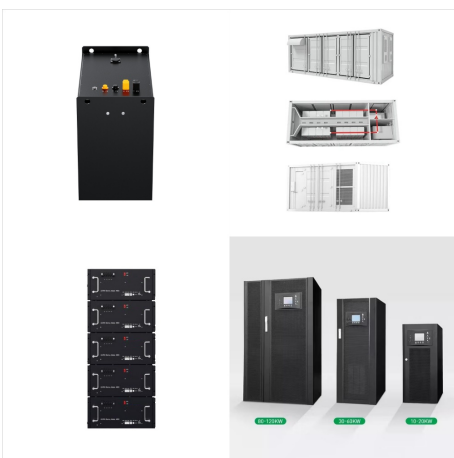
NISSAN LEAF SERVICE EV SYSTEM NO POWER



The Nissan Leaf was one of the first EV's on the market and, coincidentally enough, the first EV vehicle to be hit with a major class action in Klee v. Nissan North America . There have been numerous complaints of the dreaded "Service EV System - No Power" warning appearing on the driver dash console. Some argue that the easy fix is



Hi All, Anyone familiar with the above problem?
Battery is charged but everytime I turn it on O get the message. Also at 1 point my navigation screens keeps turning on and off. I will call the dealer tomorrow to find out what's happening. What a ???



Nissan Leaf Service EV System unable to restart after power off ? ? ? ?

NISSAN LEAF SERVICE EV SYSTEM NO POWER



I believe this is what happened to oddmar as per his post Nissan Leaf 2018 ZE1 service ev system no power in red The car is at NISSAN for 6 weeks and nobody has any ideas . Reply. Post reply Service ev system no power. jstroud48; Mar 10, 2024; Problems / Troubleshooting; Replies 2 Views 2K. Apr 8, 2024. jstroud48. J. L. How To Tow Very Dead



Thanks, The fault, "Service ev system unable to restart after power off". R.A.C. attended, turns out the 12 volt battery was low on power, half an hour with a booster pack attached and away we were. I guess it all still needs checking out, as to ???



If you have not please join our official My Nissan Leaf Facebook Group! Nissan Leaf Facebook Group. Nissan Leaf Ownership. Problems / Troubleshooting . Service EV system Service ev system no power. jstroud48; Mar 10, 2024; Problems / Troubleshooting; Replies 2 Views 2K. Apr 8, 2024. jstroud48. J.

NISSAN LEAF SERVICE EV SYSTEM NO POWER



All things related to the Nissan LEAF EV Members Online Got a "Service EV System, No Power" message and the car switched to Neutral. Luckily able to pull over safely on the shoulder. Not the best highway to get stranded on. Had it towed to the dealer. After reading old threads I think the most likely issue is the 12V battery.



Mine did this on a 2022 Leaf with less than 3k mi that I bought brand new. Dealer tested and replaced the 12v battery. Worked fine for a few weeks, then same thing, "service EV system" and car has no driving power, though I can use all accessories. The issue was intermittent and I could jumpstart the car most times.



If you have not please join our official My Nissan Leaf Facebook Group! Nissan Leaf Facebook Group. Nissan Leaf Ownership. Problems / Troubleshooting Service ev system no power. jstroud48; Mar 10, 2024; Problems / Troubleshooting; Replies 2 Views 2K. Apr 8, 2024. jstroud48. J. W. Service EV system. WillTopp; Dec 17, 2023;

NISSAN LEAF SERVICE EV SYSTEM NO POWER



I received a yellow "master caution" and the EV warning light in the middle of a drive. It went away after turning the car off, then on. From the service manual: ELECTRIC VEHICLE (EV) SYSTEM WARNING LIGHT The warning light will illuminate if there is a malfunction in the following systems: ???
Traction motor and inverter system



Second Gen Nissan LEAF (LEAF40 & LEAF62)
Service ev system no power warning on dash. Jump to Latest 4K views 1 Speak EV - Electric Car Forums. 1.8M posts 69.2K members Since 2011 A community for enthusiasts of all makes and models of EV from BMW to Tesla, Renault, Nissan, Mitsubishi and more.



So this issue is not unique to older LEAF. I just purchased a brand new Nissan Leaf SL Plus 2019 for the extended range. 5 days in and parked in the garage, 89 miles and have not plugged it in for charge even once; I now have the same message as others here "Service EV System Unable to restart after power off".

NISSAN LEAF SERVICE EV SYSTEM NO POWER



I had the same problem with my 2018 S. Delivery was late November, and I'll have to find the manufacture date. Just crossed 7500 miles. Car wouldn't engage and had to be towed to dealership.



Nissan Leaf 2018 ZE1 service ev system no power in red. Thread starter oddmar; Start date Jun 20, 2023; (and re-boot) would fix comm errors, but not power pack/system problems. Reply. O. oddmar Member. Joined Jan 20, 2020 Messages 17. Jun 26, 2023 #28 I will keep you updated when i hear more . Reply. R. ReptonAU Active member. Joined Dec 25



*The Nissan lithium-ion battery and battery capacity limited warranty includes coverage for defects in materials or workmanship for 96 months/100,000 miles (whichever occurs first) as well as protection against capacity loss below 9 segments of capacity (out of 12) as shown on the vehicle's capacity gauge for a period of 96 months/100,000 miles (whichever occurs first).