

Will Niue build a solar farm?

Niue is seeking about US\$18 million to build a solar farm as part of the island nation's plans to reduce its heavy reliance on fossil fuels. The minister for infrastructure, Dalton Tagelagi says Niue's strategic energy road map sets the ambitious goal of having 80 percent of its power generation coming from renewable energy sources by 2025.

Does Niue use solar energy?

Over the last 5 months the total integrated system has resulted in 28.6% of Niue's electricity coming from solar renewable sources, saving over 130,000 litres of diesel. Find out more about Vector Powersmart

How did the Niue solar project work?

Working on the existing solar plants to establish communication with the Niue Central Power Station. Installing 600kW of solar to increase the islands overall solar capacity to 1.1MW of solar generation. The solar array was installed well inland on high ground to avoid any potential damage from cyclones in the future.

What is Niue's energy roadmap?

Under the new energy roadmap, Niue has set a goal of 80% renewables by 2025. According to Radio New Zealand, while the main focus of Niue's energy transition will be on solar power; the potential of other renewables such as wind power, biomass and wave energy will be investigated.

Where is Niue located?

Niue, the largest unraised coral atoll in the world, is situated in the South Pacific Ocean, some 2,400 kilometres northeast of New Zealand. Like many island nations, Niue is heavily dependent on diesel fuel for power generation.

What will New Zealand do with the Niue ocean wide trust?

The project will bring Niue's renewable generation to 80 percent. New Zealand will also commit \$2 million to the Niue Ocean Wide Trust, which aims to develop a blue economy and ensure long-term ocean conservation and climate resilience.



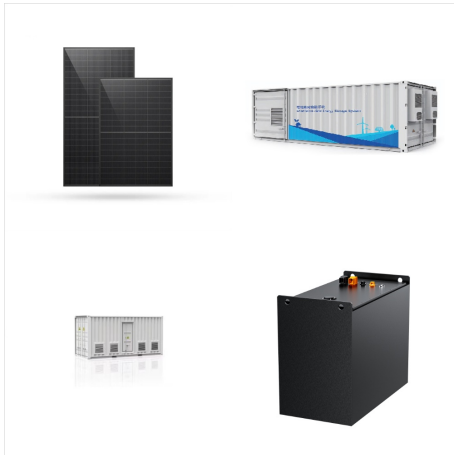
Under the new energy roadmap, Niue has set a goal of 80% renewables by 2025. According to Radio New Zealand, while the main focus of Niue's energy transition will be on solar power; the potential of other renewables such as wind power, ???



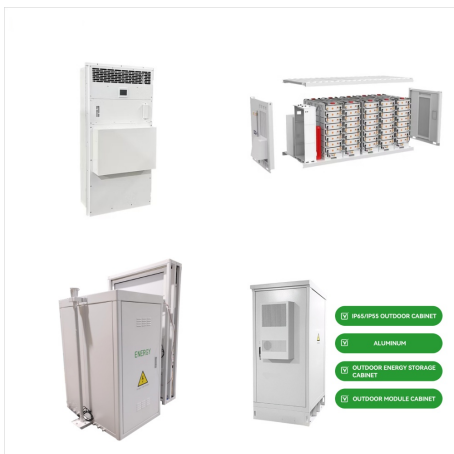
In recent years, Niue has implemented three grid-connected solar PV systems, solar water heaters, and LPG gas stoves in homes, all installed at a subsidized cost since renewable energy technology was very costly, ???



Under the new energy roadmap, Niue has set a goal of 80% renewables by 2025. According to Radio New Zealand, while the main focus of Niue's energy transition will be on solar power; the potential of other renewables such as wind power, biomass and wave energy will be investigated.



Solar PV: Solar resource potential has been divided into seven classes, each representing a range of annual PV output per unit of capacity (kWh/kWp/yr). The bar chart shows the proportion of a country's land area in each of these classes and the global distribution of land area across the classes (for comparison).



Least-Cost Analysis of Water Supply Options in Niue13. This report compares the status quo (fossil-fuelled reticulation) with rainwater providing 20% of household water use (80% reticulated), and a solar/diesel hybrid pumping system, where 16% of the electricity for the reticulation system is solar powered.



New Zealand plans to invest \$20.5 million into a new, large-scale, renewable energy project in Niue, reducing the island nation's reliance on diesel. The project will bring Niue's renewable generation to 80 percent.



In recent years, Niue has implemented three grid-connected solar PV systems, solar water heaters, and LPG gas stoves in homes, all installed at a subsidized cost since renewable energy technology was very costly, particularly for the pacific islands? citizens.



This project aims to enable Niue to generate 80% of its electricity from renewable energy by December 2025. This afternoon marked the groundbreaking ceremony for the Niue Renewable Energy Project Phase 2.



New Zealand plans to invest \$20.5 million into a new, large-scale, renewable energy project in Niue, reducing the island nation's reliance on diesel. The project will bring Niue's renewable generation to 80 percent.



Installing 0.80MW / 3.15MWh Tesla Powerpack 2 (BESS) at the Niue Power Station to maximise the use of solar on the island and eliminate the need to curtail solar to maintain grid stability. Installing Vector PowerSmarts bespoke Energy Management System (EMS) to manage Niue's electricity grid by balancing the new and existing solar generation



Installing 0.80MW / 3.15MWh Tesla Powerpack 2 (BESS) at the Niue Power Station to maximise the use of solar on the island and eliminate the need to curtail solar to maintain grid stability. Installing Vector PowerSmarts ???