

Does Niue use solar energy?

Over the last 5 months the total integrated system has resulted in 28.6% of Niue's electricity coming from solar renewable sources, saving over 130,000 litres of diesel. Find out more about Vector Powersmart

What is Niue's energy roadmap?

Under the new energy roadmap, Niue has set a goal of 80% renewables by 2025. According to Radio New Zealand, while the main focus of Niue's energy transition will be on solar power; the potential of other renewables such as wind power, biomass and wave energy will be investigated.

How did the Niue solar project work?

Working on the existing solar plants to establish communication with the Niue Central Power Station. Installing 600kW of solar to increase the islands overall solar capacity to 1.1MW of solar generation. The solar array was installed well inland on high ground to avoid any potential damage from cyclones in the future.

Where is Niue located?

Niue, the largest upraised coral atoll in the world, is situated in the South Pacific Ocean, some 2,400 kilometres northeast of New Zealand. Like many island nations, Niue is heavily dependent on diesel fuel for power generation.

How much of Niue's diesel fuel is used for power generation?

Approximately 69% of diesel fuel imported into Niue is used for power generation - around 800,000 litres. Under the new energy roadmap, Niue has set a goal of 80% renewables by 2025.

What will New Zealand do with the Niue ocean wide trust?

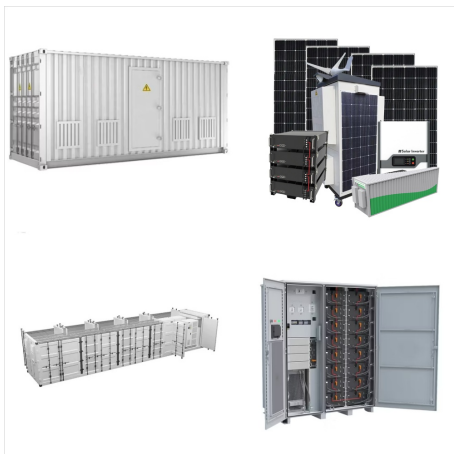
The project will bring Niue's renewable generation to 80 percent. New Zealand will also commit \$2 million to the Niue Ocean Wide Trust, which aims to develop a blue economy and ensure long-term ocean conservation and climate resilience.



New Zealand plans to invest \$20.5 million into a new, large-scale, renewable energy project in Niue, reducing the island nation's reliance on diesel. The project will bring Niue's renewable generation to 80 percent.



In recent years, Niue has implemented three grid-connected solar PV systems, solar water heaters, and LPG gas stoves in homes, all installed at a subsidized cost since renewable energy technology was very costly, particularly for the pacific islands? citizens.



Similarly, Niue's largest solar array (near the hospital) requires some inverters to be replaced. These are on-island, and replacement work will be carried out in the next few weeks. At this point, we will be able to bring a sizeable portion of solar back on the grid and reduce diesel consumption from running the generators full time.



Solar PV: Solar resource potential has been divided into seven classes, each representing a range of annual PV output per unit of capacity (kWh/kWp/yr). The bar chart shows the proportion of a country's land area in each of these classes and the global distribution of land area across ???



Solar Light Company offers a full selection of Pre-Analyzed and Certified Sunscreen Standards for laboratory use including P2 Certified Formula, P5 SPF 30 Reference Standard, P8 High Reference Standard, S1 UVA Reference Standard, and S2 UVA Reference Standard. Each batch will include a Certificate of Analysis for Homosalate content. Our batches have passed ???



Company profile for installer Solar at Work - showing the company's contact details and types of installation undertaken. ENF Solar. Niue : Business Details Installation size Smaller Installations Operating Area Niue Panel Suppliers



Under the new energy roadmap, Niue has set a goal of 80% renewables by 2025. According to Radio New Zealand, while the main focus of Niue's energy transition will be on solar power; the potential of other renewables such as wind power, biomass and wave energy will be investigated.

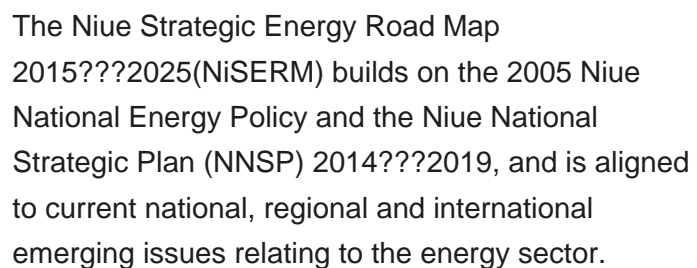
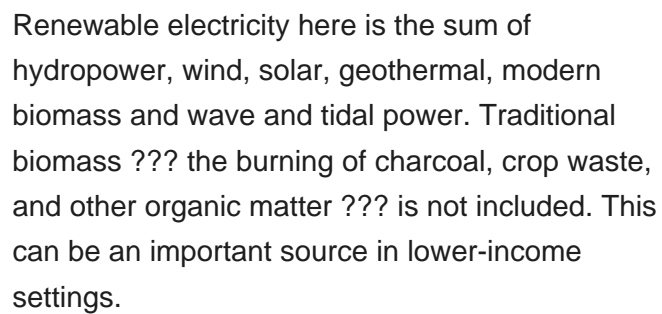
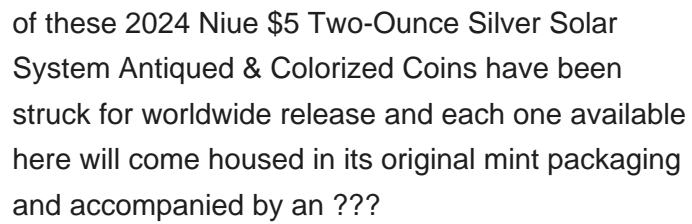


??? In 2014, the total installed solar PV capacity in Niue reached 343 kWp, with 150 kWh battery storage for smoothing purposes of voltage and frequency into the grid. This is equivalent to 14% of the total installed capacity.



Installing 0.80MW / 3.15MWh Tesla Powerpack 2 (BESS) at the Niue Power Station to maximise the use of solar on the island and eliminate the need to curtail solar to maintain grid stability. Installing Vector PowerSmarts bespoke Energy Management System (EMS) to manage Niue's electricity grid by balancing the new and existing solar generation







Solar PV: Solar resource potential has been divided into seven classes, each representing a range of annual PV output per unit of capacity (kWh/kWp/yr). The bar chart shows the proportion of a country's land area in each of these classes and the global distribution of land area across the classes (for comparison).



This project aims to enable Niue to generate 80% of its electricity from renewable energy by December 2025. This afternoon marked the groundbreaking ceremony for the Niue Renewable Energy Project Phase 2.