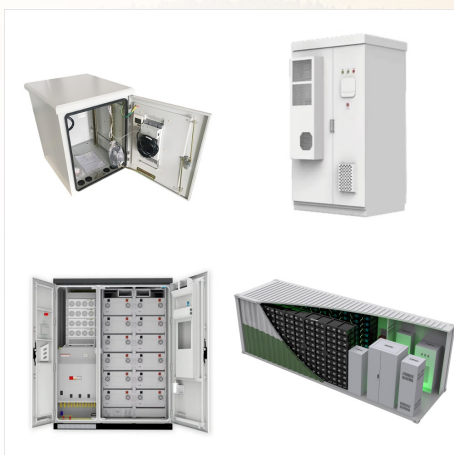




NOCO NLP14 - 12V 500A Lithium Powersport Battery. Introducing the all-new NOCO Lithium NLP14 12V Lithium Powersport Battery, a Group 14 battery, rated at 4Ah (51Wh) and 500-amps of starting power. Will fit: Yamaha Tenere 700 (all models), Honda CRF1000 Africa Twin (2016/17 only) Honda XRV750 Africa Twin (all models)



Noco NLP14 12V LiFePO4 Lithium Powersport Battery Introducing the all-new NOCO Lithium NLP14 12V Lithium Powersport Battery, a Group 14 battery, rated at 4Ah (51Wh) and 500-amps of starting power. It's better than lead-acid motorcycle batteries in almost every way: no sulfation, no activation, no acid, no maintenance, no water needed, and it



The Noco Lithium Powersport Battery is a Group 14 battery, rated at 4Ah (51Wh) with 500 Amps of starting power. Unlike lead-acid motorcycle batteries, there is no sulfation, no activation, no ???

NOCO NLP14 12V 500A LITHIUM POWERSPORT BATTERY



NOCO NLP14 12V, 500A Lithium Powersport Battery. NOCO NLP14 12V, 500A Lithium Powersport Battery. Item #: NLP14 Voltage: 12 Volt / 4 Ah / 500 Amps (Peak) NOCO NLP14 12V, 500A Lithium Powersport Battery (Open Box) NOCO NLP14 12V, 500A Lithium Powersport Battery (Open Box) Item #: OB-MC2



Introducing the all-new NOCO Lithium NLP14 12V Lithium Powersport Battery, a Group 14 battery, rated at 4Ah (51Wh) and 500-amps of starting power. It's better than lead-acid motorcycle batteries in almost every way: no sulfation, no activation, no acid, no maintenance, no water needed, and it comes fully charged and ready to install.



Introducing the all-new NOCO Lithium NLP14 12V Lithium Powersport Battery, a Group 14 battery, rated at 4Ah (51Wh) and 500-amps of starting power. It's better than lead-acid motorcycle batteries in almost every way: no sulfation, no activation, no acid, no maintenance, no water needed, and it comes fully charged and ready to install.

NOCO NLP14 12V 500A LITHIUM POWERSPORT BATTERY



Introducing the all-new NOCO Lithium NLP14 12V Lithium Powersport Battery, a Group 14 battery, rated at 4Ah (51Wh) and 500-amps of starting power. It's better than lead-acid motorcycle batteries in almost every way: no sulfation, no ???



Introducing the all-new NOCO Lithium NLP5 12V Lithium Powersport Battery, a Group 5 battery, rated at 2Ah (25Wh) and 250-amps of starting power. NLP14. 12V 500A Lithium Powersport Battery. \$129.95 [Add to Cart] NLP20. 12V 600A Lithium Powersport Battery. \$179.95 [Add to ???]



Buy NOCO Lithium NLP20, Group 20, 600A Lithium LiFePO4 Motorcycle Battery, 12V 7Ah ATV, UTV, Jet Ski, 4 Wheeler, Quad, Riding Lawn Mower, Tractor, Scooter, PWC, Seadoo, Polaris and Generator Battery: Electronics - Amazon FREE DELIVERY possible on eligible purchases NOCO Lithium Powersport Batteries NOCO - US. Image Unavailable. Image

NOCO NLP14 12V 500A LITHIUM POWERSPORT BATTERY



To recharge NOCO Powersport batteries, connect a compatible lithium-ion charger to the positive (+) and negative (-) battery terminals. The recommended charging voltage is 14.6-volts. The product uses advanced lithium-ion technology that allows for the rapid charging of the internal lithium-ion cells.



NOCO Lithium NLP14, Group 14, 500A Lithium Powersport Battery, 12V 4Ah Battery With Dynamic BMS For Motorcycles, Motorbikes, ATVs, UTVs, PWCs and Scooters Visit the NOCO Store 4.3 4.3 out of 5 stars 3,072 ratings



Introducing the all-new NOCO Lithium NLP14 12V Lithium Powersport Battery, a Group 14 battery, rated at 4Ah (51Wh) and 500-amps of starting power. It's better than lead-acid motorcycle batteries in almost every way: no sulfation, no activation, no acid, no maintenance, no water needed, and it comes fully charged and ready to install. Delivers over 500-amps of starting ???

NOCO NLP14 12V 500A LITHIUM POWERSPORT BATTERY



Introducing the all-new NOCO Lithium NLP14 12V Lithium Powersport Battery, a Group 14 battery, rated at 4Ah (51Wh) and 500-amps of starting power. It's better than lead-acid motorcycle batteries in almost every way: no sulfation, no ???



Features. Overview: The NOCO NLP14 is a 12V 500A Lithium Powersport Battery designed for powersport vehicles. This Lithium Iron Phosphate (LiFePO4) battery can replace the OEM batteries of many powersport brands, and offers twice the power, ten times more starts, and five times longer life than traditional lead-acid batteries.



NOCO Lithium NLP14, Group 14, 500A Lithium Powersport Battery, 12V 4Ah Battery with Dynamic BMS for Motorcycles, ATVs, UTVs, PWCs, Scooters, and Snowmobiles 4.2 out of 5 stars 3,085 1 offer from \$20227 \$ 202 27

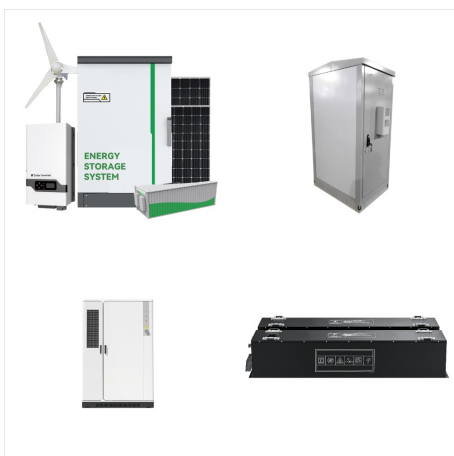
NOCO NLP14 12V 500A LITHIUM POWERSPORT BATTERY



Find many great new & used options and get the best deals for NOCO (NLP14) 12V 500A 4Ah 51Wh Lithium Powersport Battery () at the best online prices at eBay! Free shipping for many products! item 1 NOCO NLP14 12V 500A Lithium Powersport Battery NOCO NLP14 12V 500A Lithium Powersport Battery. \$84.99



NOCO NLP14 500A Lithium Powersport Battery. Introducing the all-new NOCO Lithium NLP14 12V Lithium Powersport Battery, a Group 14 battery, rated at 4Ah (51Wh) and 500-amps of starting power. It's better than lead-acid motorcycle batteries in almost every way: no sulfation, no activation, no acid, no maintenance, no water needed, and it comes



V 500A Lithium Powersport Battery \$129.95 [Add to Cart] NLP20. 12V 600A Lithium Powersport Battery [Add to Cart] Dual-Purpose 2X More Power. 10X More Starts. 2X More Capacity. 2X Longer Life. Introducing the all-new NOCO Lithium NLX Dual-Purpose Series that combine the power of a starter battery with the cycle life of a deep-cycle

NOCO NLP14 12V 500A LITHIUM POWERSPORT BATTERY



Sold individually. Battery includes 3-way terminals, one .500 in. spacer, three .600 in. spacers, four .300 in. spacers, hex key, and NLP user guide. NOCO Lithium Powersport batteries deliver insane performance.



They are also equipped with a removable mounting block and modular mounting spacers that enable the batteries to be safely and securely mounted in more applications. NOCO Lithium Powersport batteries are available in several sizes. * Two times more power, ten times more starts, and five times longer life than lead-acid batteries.

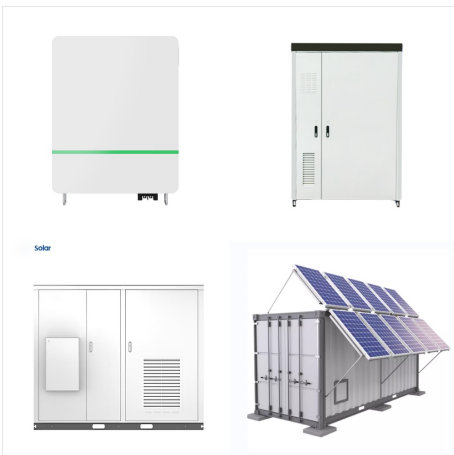


Introducing the all-new NOCO Lithium NLP30 12V Lithium Powersport Battery, a Group 30 battery, rated at 8Ah (99Wh) and 700-amps of starting power. NLP14. 12V 500A Lithium Powersport Battery. \$129.95 [Add to Cart] NLP20. 12V ???

NOCO NLP14 12V 500A LITHIUM POWERSPORT BATTERY



Check out the deal on NOCO NLP14 12V, 500A Lithium Powersport Battery (Open Box) at BatteryMart . The NOCO NLP14 12V, 500A Lithium Powersport Battery (Open Box) has been cross-referenced to be compatible with or replace these OEM part numbers and models: B16A-AB. BT12A-BS.



V 500A Lithium Powersport Battery Features Includes: NLP14 Lithium Powersport Battery. The most highly-designed and engineered lithium powersport battery series ever. NOCO GC004 10" Extension Cable.

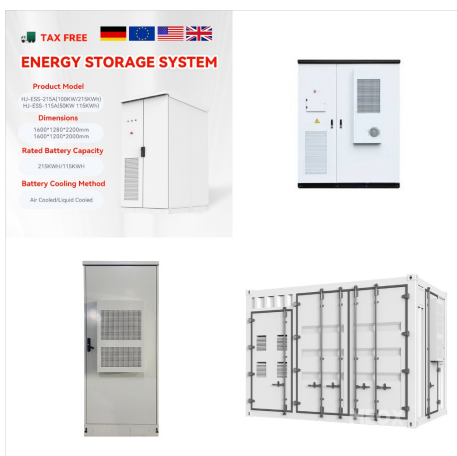


Introducing the all-new NOCO Lithium NLP9 12V Lithium Powersport Battery, a Group 9 battery, rated at 3Ah (38Wh) and 400-amps of starting power. NLP14. 12V 500A Lithium Powersport Battery. \$129.95 [Add to Cart] NLP20. 12V 600A Lithium Powersport Battery. \$179.95 [Add to ???]

NOCO NLP14 12V 500A LITHIUM POWERSPORT BATTERY



Introducing the all-new NOCO Lithium NLP14 12V Lithium Powersport Battery, a Group 14 battery, rated at 4Ah (51Wh) and 500-amps of starting power. It's better than lead-acid motorcycle batteries in almost every way: no sulfation, no activation, no acid, no maintenance, no water needed, and it comes fully charged and ready to install.



Seems like L-ion 12V has got some traction in the Powersport industry though. Ive read that the 12V L-ion are good up to 113 constant temp. Whoa thats hot, melt your tires in that climate! The key to a L-ion system is the BMS which can be programmed for managing the battery charging and use for different applications and conditions.



500A Lithium Powersport Battery. Introducing the all-new NOCO Lithium NLP14 12V Lithium Powersport Battery, a Group 14 battery, rated at 4Ah (51Wh) and 500-amps of starting power. It's better than lead-acid motorcycle batteries in almost every way: no sulfation, no activation, no acid, no maintenance, no water needed, and it comes fully