



Fossil fuels are sources of energy made from prehistoric plants and animals. Non-renewable energy comes from sources that could eventually run out. Renewable energy comes from sources that can be easily replenished. Renewable ???



Energy is one of the major inputs for the economic development of the country. Any sustainable energy source that comes from the natural environment is a renewable energy source. Renewable energy is inexhaustible and a clean alternative to fossil fuels. In this article, we will learn about the types and sources of renewable energy.



Renewable energy comes from unlimited, naturally replenished resources, such as the sun, tides, and wind. Renewable energy can be used for electricity generation, space and water heating and cooling, and transportation. Non-renewable energy, in contrast, comes from finite sources, such as coal, natural gas, and oil.

# NON RENEWABLE SOURCES OF ENERGY DEFINITION



Non-renewable energy sources cannot be recycled or reused. There is a limited supply. Examples of non-renewable energy sources are fossil fuels (coal, oil and natural gas) and nuclear fuels. Burning of fossil fuels releases greenhouse gases into our atmosphere.



LCOE of US Resources, 2023: Non-Renewable Resources. (The ITC/PTC program does not provide subsidies for non-renewable resources. Fossil fuel and nuclear resources have significant subsidies from other policies.) Resource (Non-Renewables) Unsubsidized LCOE\* Natural Gas (combined cycle) \$39 - \$101: Natural Gas Peaker Plants: \$115 - \$221: Coal

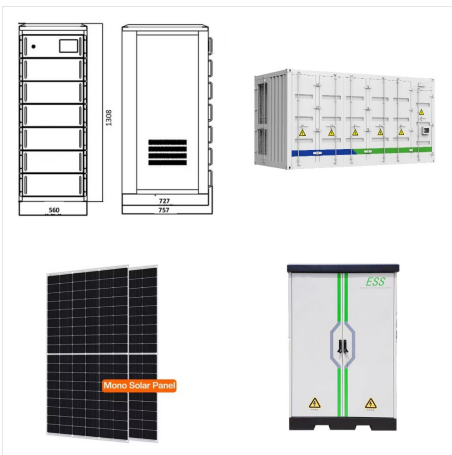


Solar energy is a form of renewable energy, in which sunlight is turned into electricity, heat, or other forms of energy we can use is a "carbon-free" energy source that, once built, produces none of the greenhouse gas emissions that are driving climate change. Solar is the fastest-growing energy source in the world, adding 270 terawatt-hours of new electricity ???

# NON RENEWABLE SOURCES OF ENERGY DEFINITION



Fossil energy sources, including oil, coal and natural gas, are non-renewable resources that formed when prehistoric plants and animals died and were gradually buried by layers of rock. Over millions of years, different types of fossil fuels formed -- depending on what combination of organic matter was present, how long it was buried and what temperature and pressure conditions ???



A lot of our energy comes from non-renewable sources such as coal, oil and gas. These resources are made up from the remains of ancient animals and plants that develop over millions and millions



Conventional Sources of Energy: Non-conventional sources of energy: These sources of energy are also known as a non-renewable source of energy. These sources of energy are also known as a renewable source of energy: They find both commercial and industrial purposes: They are mainly used for household purposes

# NON RENEWABLE SOURCES OF ENERGY DEFINITION



Of course, renewables???like any source of energy???have their own trade-offs and associated debates. One of them centers on the definition of renewable energy. Strictly speaking, renewable energy is just what you might think: perpetually available, or as the United States Energy Information Administration puts it, "virtually inexhaustible."



Coal, oil and natural gas are known as non-renewable sources of energy because they exist in limited quantities in nature. In other words, they are generated from finite resources or they take an extremely long time to regenerate. Nuclear energy is also a non-renewable energy source because the uranium it uses as fuel does not regenerate on its



Energy sources are categorized into renewable and nonrenewable types. Nonrenewable energy sources are those that exist in a fixed amount and involve energy transformation that cannot be easily replaced. Renewable energy sources are those that can be replenished naturally, at or near the rate of consumption, and reused.



# NON RENEWABLE SOURCES OF ENERGY DEFINITION



Some non-renewable sources of energy, such as nuclear power, [contradictory] generate almost no emissions, while some renewable energy sources can be very carbon-intensive, The National Renewable Energy Laboratory does not mention ???



The production of nuclear fuel is what makes it an example of a non-renewable resource. (Foto: CC0 / Pixabay / distelAPPArath) While nuclear energy itself is considered a renewable energy source, the process of harvesting nuclear energy is what makes nuclear fuels non-renewable. Nuclear energy is released by splitting the nucleus of an atom, in a process ???



resources used to generate heat and/or electricity are known as energy resources. Non-renewable energy resources are finite. They cannot be easily replaced on human timescales, and we are exploiting them faster than they are being made. There are two main types of non-renewable energy: fossil fuels and nuclear energy. Fossil fuels

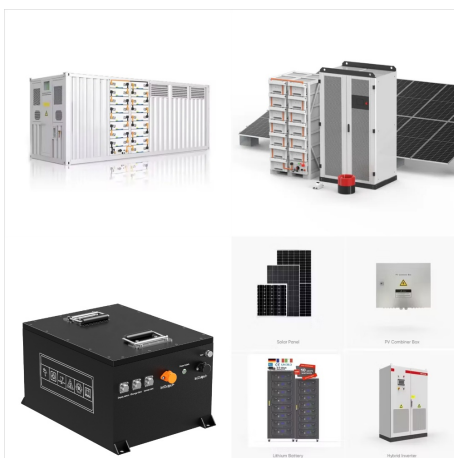
# NON RENEWABLE SOURCES OF ENERGY DEFINITION



A coal mine in Wyoming, United States. Coal, produced over millions of years, is a finite and non-renewable resource on a human time scale.. A non-renewable resource (also called a finite resource) is a natural resource that cannot be ???



Knowing whether a source of energy is renewable or non-renewable is important when considering energy and/or sustainability. Renewable energy is defined by the U.S. Environmental Protection Agency thus: "Renewable energy includes resources that rely on fuel sources that restore themselves over short periods of time and do not diminish" (Source: U.S. EPA).



Renewable Resources: Non-renewable Resources:  
Depletion: Renewable resources cannot be depleted over time. Non-renewable resources deplete over time. Sources: Renewable resources include sunlight, water, wind and also geothermal sources such as hot springs and fumaroles. Non-renewable resources includes fossil fuels such as coal and petroleum.

# NON RENEWABLE SOURCES OF ENERGY DEFINITION



What is Non Renewable Energy? Non Renewable energy sources are defined as sources that are limited reservoirs of energy and which require a longer time span for replenishment . Nonrenewable energy sources are also known as conventional energy sources. Major non-renewable resources are coal, oil, natural gas and nuclear materials like uranium.



Renewable energy is a collective term used to capture several different energy sources. "Renewables" typically include hydropower, solar, wind, geothermal, biomass, and wave and tidal energy. This interactive map shows the share of primary energy that comes from renewables (the sum of all renewable energy technologies) across the world.



? In contrast, renewable energy sources accounted for nearly 20 percent of global energy consumption at the beginning of the 21st century, largely from traditional uses of biomass such as wood for heating and cooking 2015 about 16 percent of the world's total electricity came from large hydroelectric power plants, whereas other types of renewable energy (such ???

# NON RENEWABLE SOURCES OF ENERGY DEFINITION

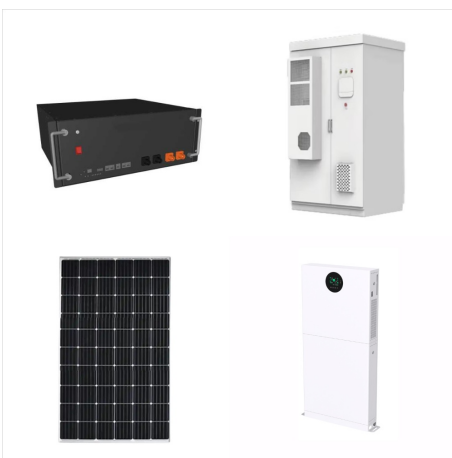


Non-renewable energy resources cannot be replaced ??? once they are used up, they will not be restored (or not for millions of years).

Non-renewable energy resources include fossil fuels and nuclear power.. Fossil fuels. Fossil fuels (coal, oil and natural gas) were formed from animals and plants that lived hundreds of millions of years ago (before the time of the dinosaurs).



Renewable Resources. Renewable resources can be replenished by natural processes as quickly as humans use them. Examples include sunlight and wind. Wind is a renewable resource. Wind turbines like this one harness just a tiny fraction of wind energy. Living things are considered to be renewable. This is because they can reproduce to replace



Some sources of energy are renewable or potentially renewable. Examples of renewable energy sources are: solar, geothermal, hydroelectric, biomass, and wind. Renewable energy sources are more commonly by used in developing nations. Industrialized societies depend on non-renewable energy sources. Fossil fuels are the most commonly used types of



# NON RENEWABLE SOURCES OF ENERGY DEFINITION



The sun is the main source of energy on Earth. Other energy sources include coal, geothermal energy, wind energy, biomass, petrol, nuclear energy, and many more. Energy is classified into various types based on sustainability as renewable sources of energy and non-renewable sources of ???



14.3.2 Non-renewable Energy Resources. In past years, conventional or non-renewable energy resources (non-RERs) were the only energy resources that were used for electricity generation in thermal power plants. However, increasing the energy consumption and its popularity among people caused construction of a large number of power plants in the