

We are focused on modernizing our grid to support a high level of renewable energy integration, incorporating storage and advanced controls, and expanding transportation electrification while maintaining grid reliability and security. Electrons to Molecules. NREL researchers are exploring how to use affordable, renewable electricity to convert



In the lineup of colors below, the top tier is a darkened version of the NREL color palette, the second tier is the official NREL color palette from the style guide (with the exception of #212121), and the lower two tiers are lighter versions.



The Office of Energy Efficiency and Renewable Energy (EERE) maintains an approval process for new office, subprogram and specialty logos. As of March 2024, DOE has paused the development or approval of any new logos or brand identity requests, as well as certain types of website requests, as part of the transition from the current brand and website environments.



File: National Renewable Energy Laboratory logo (2 rows).jpg. From Wikimedia Commons, the free media repository. Jump to navigation Jump to search. File; File history; File usage on Commons; File usage on other wikis; Size of this preview: 800 x 229 pixels.



The National Renewable Energy Laboratory is a national laboratory of the U.S. Department of Energy, Office of Energy Efficiency and Renewable Energy, operated by the Alliance for Sustainable Energy LLC.



Cool ambigram logo for renewable energy company. My goal here was to cover all aspects of what CH demanded: a renewable energy company that looks for a new fresh logo. The logo, therefore, combines the letters S and A, a lightning bolt, the circle as the symbol of perfection and the spaces that break it to symbolize two rotating parts that form



See our visual brand elements for guidance on conveying the NREL brand through appropriate use of its logo, photographs, typographic hierarchy, and color palette. Brand Protection NREL and its parent organization, the Alliance for Sustainable Energy LLC, have trademarked various words and identifiers to protect and promote the NREL brand.



Avoid big prints, busy patterns, and logos, which can be distracting and date the photo. Mid-tone colors such blue, green, burgundy, and purple are universally flattering. Photos supplied by The National Renewable Energy Laboratory is a national laboratory of ???



download free vector logo for NREL brand from logotypes101 free in vector art in eps, ai, png and cdr formats. Search. Brand Logos. Latest Logos; Popular Logos; Alphabetical; Browse Logos. Upload New Logo; Free Vector Logo NREL. N/A. Updated On 31/05/2007 File Size 26.17 KB DOWNLOAD EPS. Tags: NREL.



Want to dig deeper into NREL's history? Download National Renewable Energy Laboratory History: 1977???2016.. Learn more about the people behind the laboratory's research developments by downloading Clean Energy Innovators: NREL People Working to Change the World. (Or purchase a hard copy of Clean Energy Innovators for the at-cost price when you use coupon ???



The National Renewable Energy Laboratory (NREL) is a government-owned, contractor-operated facility; it is funded through the U.S. Department of Energy (DOE). This arrangement allows a private entity to operate the lab on behalf of the federal government under a prime contract. NREL receives funding from Congress to be applied toward research



The National Renewable Energy Laboratory (NREL) is dedicated to the research, development, commercialization, and deployment of renewable energy and energy efficiency technologies. Enforcement VIEW ALL. Enforcement Letter, Alliance for Sustainable Energy, LLC July 21, 2022



This Image Gallery, provided by the National Renewable Energy Laboratory (NREL), is a collection of more than 30,000 photographs, scientific images, and videos related to renewable energy and energy efficiency technologies, along with photos and videos documenting life at the laboratory. NREL is the U.S. Department of Energy's primary national



The NREL Foundation is an independent, nonprofit 501(c)(3) entity that supports the National Renewable Energy Laboratory's clean energy mission and enables a broad set of activities and approaches by leveraging non-federal funding resources. Our Story. Established in 2021, the NREL Foundation serves as a bridge between NREL and donors.



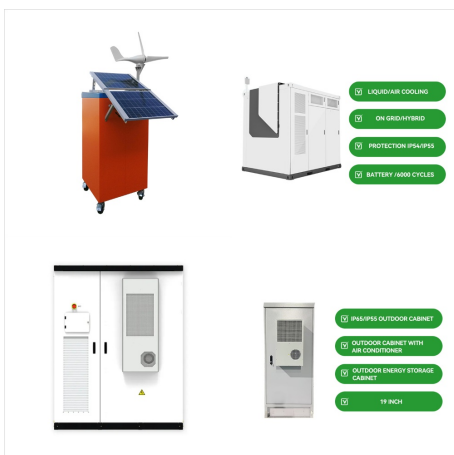
Proposed NREL logo, une, White lac lue
Accelerating Widespread Adoption of
Energy-Efficient Vehicles & Fuels Transportation
accounts for 70% of U.S. petroleum use and 27% of
the nation's greenhouse gas (GHG) emissions, and
predicted surges in population growth will trigger
ever greater demand



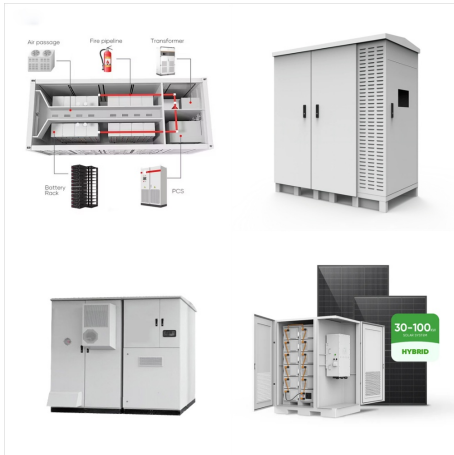
The NREL logo available for download as PNG and SVG(vector). Get it here! NREL Logo PNG Transparent. NREL Logo Black And White. NREL Logo SVG Vector. Check out other logos starting with "N"! logos that start with "N", nrel logo, nrel logo black and white, nrel logo png, nrel logo transparent. Download



Announcements Blog. Kestrel Student Allocations Open for Application Oct. 21, 2024. NREL HPC FY24 Annual User Satisfaction Survey Aug. 2, 2024. Extended Deadline for FY25 HPC Allocation Cycle Call for Requests June 11, 2024. FY24 Annual Report Request June 11, 2024. Kestrel GPUs and Eagle End of Service June 11, 2024. Recent Outages - Continuity of Operations ???



Planet F / 5 seasons. simple, memorable, unique
 *startup that partners with utilities to use renewable energy to mine cryptocurrency concept: mobility
 letter f Earth Earth / circle divided in 4 seasons
 "satellite" 5th season that can move around the globe energy / sun and shadow on the planet
 landmark is constructed in the golden ratio
 Brandmark is paired with an international ???



The System Advisor Model??? (SAM???) is a free desktop application for techno-economic analysis of energy technologies. It is used by project managers and engineers, policy analysts, technology developers, and researchers to investigate questions about the technical, economic, and financial feasibility of renewable energy projects.



The National Renewable Energy Laboratory (NREL) is transforming energy through research, development, commercialization, and deployment of renewable energy and energy efficiency technologies. Partner with us to accelerate the transition of renewable energy and energy efficiency technologies to the marketplace.



DOE Logo: The DOE logo is the circular DOE seal combined with the department's name in bold typography beside it to make it more readable and recognizable. Note: If your external organization has received funding or support through the Office of Energy Efficiency and Renewable Energy (EERE) please contact the EE Communications Office for



NREL's photography supports our vision for a clean energy future through people-focused, authentic, diverse and inclusive, and demonstrated imagery. People-Focused: NRELians NREL photos feature people???not only equipment, machinery, or buildings???to convey staff's vital role to the laboratory's mission and capture their enthusiasm for our



The National Renewable Energy Laboratory is a national laboratory of the U.S. Department of Energy, Office of Energy Efficiency and Renewable Energy, operated by the Alliance for Sustainable Energy LLC.



About NREL. At the National Renewable Energy Laboratory (NREL), we focus on creative answers to today's energy challenges. From breakthroughs in fundamental science to new clean technologies to integrated energy systems that power our lives, NREL researchers are transforming the way the nation and the world use energy.



Golden, CO: National Renewable Energy Laboratory. NREL/TP- 6A40-81644. Joshi, Prateek, Amy Rose, and Ilya Chernyakhovskiy. 2022. Role of Renewable Energy, Storage, and Demand Response in Karnataka's Power Sector Future. Golden, CO: National Renewable Energy Laboratory. NREL/TP-6A40-83463.



Features signature and secondary palettes that complement the blue in NREL's logo; May be used in graphics, text (including headers and subheads), pull quotes, and other accent text. Palette Color PMS CMYK RGB Hexadecimal; Primary: Blue : 3005c: 100C 31M 0Y 0K: 0 123 189 #0079C2: Secondary: Blue : 2995c: 90C 11M 0Y 0K: 0 164 228 #00A4E4