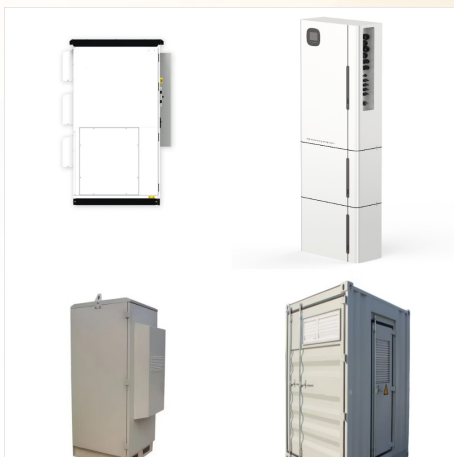




Interested applicants should mark their EOIs as "MANUFACTURING OF ELECTRIC VEHICLES IN BOTSWANA" and hand-deliver or Courier them to the Ministry of Investment Trade and industry Exponential Building at Plot 54351, Off PG Matante Road, Central Business District (CBD), Gaborone. The deadline for submission is the 12th of May 2022 at ???



Electrical Grid. Botswana's power grid was first developed in the late 1940s to facilitate the importation of electrical power from South Africa (Kanduza 2009). In the 1970s, the role of designing, constructing, and maintaining the grid was bundled together with the generation of power and altogether entrusted to the BPC.



Botswana Power Corporation, P O Box 48, Gaborone, Botswana Received: March 30, 2014 / Accepted: May 05, 2014 / Published: August 31, 2014. off-grid electrification have been used to meet the

OFF GRID ELECTRICITY BOTSWANA



The solar power plant will be connected to the national power grid 4.2 kilometres from BPC's 66/11kV substation, which will facilitate access to the Southern African Power Pool. Construction will begin in November 2024, with commissioning slated for mid-2025.



As of the end of the eleventh National Development Plan (NDP 11), Botswana has successfully connected 447 out of 565 gazetted villages to the national electricity grid. In a recent parliamentary session, Minister of Minerals and Energy Honourable Lefoko Moagi announced plans to connect an additional 19 villages by the end of the month under the



The adoption of off-grid solar-powered water pump systems in Botswana has emerged as a beacon of sustainable development in agriculture. By harnessing renewable energy sources and embracing innovative technology, these ???

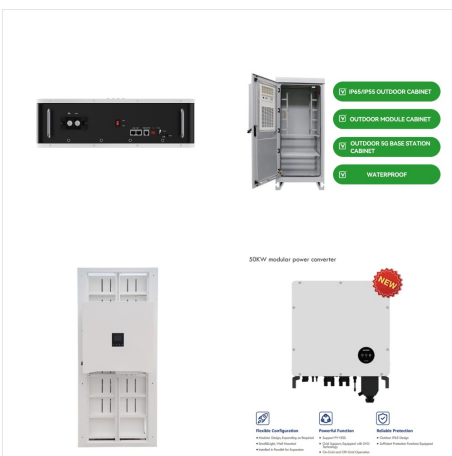
OFF GRID ELECTRICITY BOTSWANA



Solar home systems provide the annual electricity needs of off-grid households for as little as USD 56 per year, less than the average price for poor quality energy services. What is Botswana main source of electricity? Botswana's energy capacity is thermal, produced mostly in coal-fired plants with a few small diesel generators in rural



Diesel generators can even be used to add on-demand generating capacity to the electrical grid. For example, the Botswana Power Corporation (BPC)-owned 90 MW back-up generator operation in Orapa consists of two 45 MW GE LM 6000 turbine/generator units. Based on their specification data, when they are both running, these units can consume up to 22 000 ???



A complete range of energy and water solutions. Welcome to The Solar Zone. The Solar Zone specializes in the design, supply and installation of off-grid and grid-tied solar and backup power systems for homes, offices and safari camps using the latest inverter, solar panel and lithium ion battery technology. Most of these components are immediately available from our shop in Maun.

OFF GRID ELECTRICITY BOTSWANA



The PPA will run for an initial tenure of 5 years and add 10MW generated from the Lesedi power project to the national grid. At the signing ceremony, Tony Gilby, Managing Director Tlou Energy, said, "Signing of the 10MW PPA is a major step forward for Tlou and builds on the excellent progress made to date.



There are two kinds of PV systems: grid-connected and off-grid systems. In grid-connected systems, the AC output of a solar operation is fed into the electrical grid to supplement the power produced by other power plants. These operations usually do not include any storage so they can only generate and supply power to the grid during daylight



Esteemed guests, including the President of Botswana, the Norwegian Ambassador to Botswana, representatives from the International Finance Corporation (IFC), FNB Botswana, Rand Merchant Bank (RMB), the CEO of Botswana Power Corporation, the Minister of Minerals and Energy, alongside local stakeholders and community members, gathered to

OFF GRID ELECTRICITY BOTSWANA



This makes windmills better for supplementing other types of off-grid power generation unless you are using one or multiple turbines to charge batteries for subsequent use on demand. Carefully assess your property for ???



Power Africa supports this program that will enable electricity consumers in Botswana to self-generate electricity via rooftop solar PV systems of up to 1 MW (35 kW residential consumers and up to 1 MW for Commercial & Industrial) and sell any excess power generated to the Botswana Power Corporation (BPC). U.S. Embassy Gabarone, Botswana



This is a study that explores replacing the fossil fuel used by a village shop in Majwanaadipitse, Botswana (22 ° 6 ' 50 " S, 26 ° 53' 0 " E) with an off- grid PV system. This was ???

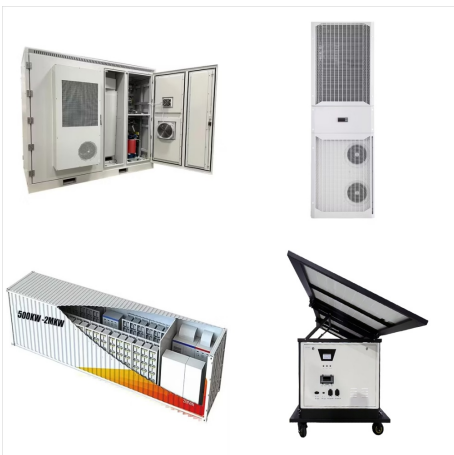
OFF GRID ELECTRICITY BOTSWANA



In Botswana, like in many other developing countries in the SADC region, a state-owned electric utility (Botswana Power Corporation) is the primary agent for rural electrification. The utility receives subsidies from the government for extending ???



Electricity emission factor (Scope 3 - without transmission and distribution losses) using allocation - cut-off system model. Botswana (BW) Unit Type. Energy. Year: 2021. Year Released: Data Versioning: Status: Current; API Reference. Activity ID. electricity-supply_grid-source_market_for_electricity _medium_voltage Copy to clipboard



????? ??? ??? ??? ??? ??? ??5kW Off Grid Solar System ???Botswana ???Namkoo is pleased to announce the completion of another off-grid project in #Botswana. The project???

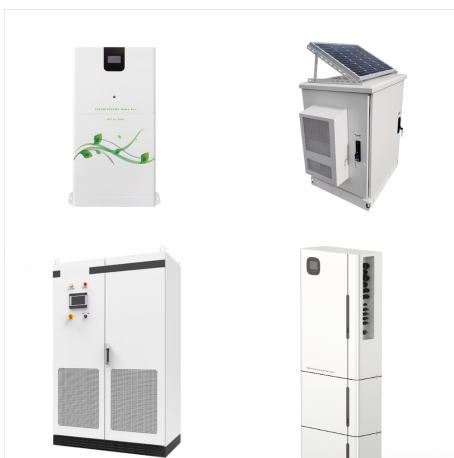
OFF GRID ELECTRICITY BOTSWANA



Botswana's electricity sector infrastructure. Issue 294 17 February 2015. This map provides an overview of Botswana's electricity infrastructure. Transmission lines are clearly marked on the map, ranging from 33kV to 400kV. Power, Renewable energy, Off-grid energy, Commercial & industrial, Thermal energy, Transmission & distribution Issue



Botswana's electricity sector infrastructure. Issue 294 17 February 2015. This map provides an overview of Botswana's electricity infrastructure. Transmission lines are clearly marked on the map, ranging from ???



In November, government-owned Kenya Electricity Generating Company (KenGen) was selected to deploy an energy storage pilot project in that country by the World Bank, while a few days ago Somalia's Ministry of Energy and Water Resources (MoEWR) launched a World Bank-supported tender for 46 solar and storage off-grid power plants with ???

OFF GRID ELECTRICITY BOTSWANA



Botswana aims to transform the country's energy landscape by enabling renewable solutions and improved electricity access. Botswana has vast, untapped renewable energy resources. It has set an admirable target of increasing renewable energy to 30 per cent of its energy mix by 2030 and 50 per cent by 2036. International News Off-Grid



Government, through Botswana Power Corporation (BPC), is implementing programmes focused on diversifying energy sources, primarily through on grid and off grid renewable energy projects, rural electrification, and zero connection initiatives.



Nat Hab's Fully Electric, Off-Grid, Solar-Charged Safari Vehicle is Designed to Decarbonize, Innovate and Inspire In late 2021, we began work on creating an Electric Safari Vehicle in Botswana's Okavango Delta to re-shape the carbon footprint of vehicles in Africa's safari industry. Our goal was to challenge the status quo, while also

OFF GRID ELECTRICITY BOTSWANA



What exactly is off grid electricity? Of course, many people have different ideas about this. For the purpose of this article, it's electricity that you generate on your own property.. Generating off grid electric energy can happen through the various renewable (naturally replenished) energy sources available today. And there are non-renewable options for off grid ???



state-owned electric utility (Botswana Power Corporation) is the primary agent for rural electrification. The utility receives subsidies from the government for extending national grid to rural areas. However, the utility engages private op-erators to build grid extension projects. Despite such arrangement between the government of Botswana and



the extension of the main electricity grid. Botswana with an average national electrification rate of 65.4% and 58.6% in rural areas as per December 2018 is no exception . Against this background, renewable energy is identified as a key enabler for increasing physical access to electricity to off-grid communities.