



Ormat Technologies, Inc. announced that it has successfully completed the 82 MW Ngatamariki geothermal power plant in New Zealand under the \$142 million Supply and Engineering, Procurement and Construction (EPC) contracts signed with Mighty River Power (MRP) in June 2011.



Organic Rankine Cycle (ORC) systems are capable of utilising low-enthalpy geothermal sources. The aim of the Above Ground Geothermal and Allied Technologies (AGGAT) research programme is the development of ORC systems within New Zealand.



The aim of this thesis is to evaluate ORC systems and technologies from an energy and economic perspective. ORC systems are a growing renewable electricity generation technology, but New ???



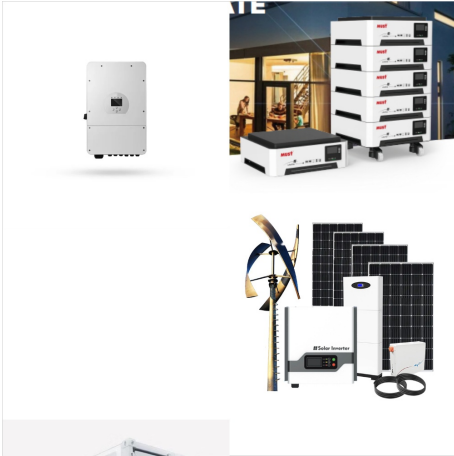
RENO, Nev., Sept. 19, 2023 (GLOBE NEWSWIRE) -- Ormat Technologies, Inc. (NYSE: ORA), a leading renewable energy company, today announced that the Company has signed new contracts with Mercury NZ Limited for the supply and Engineering, Procurement and Construction (EPC) of a new 56 MW (gross) geothermal power plant at Ngatamariki, New Zealand.



Released today, Energy in New Zealand 2023 is MBIE's annual round-up of the energy sector, highlighting key trends in energy supply, transformation and demand for the 2022 calendar year. "High rainfall topped up New Zealand's hydro lakes over the winter months, making hydro a major contributor to renewable generation. Hydro generation was



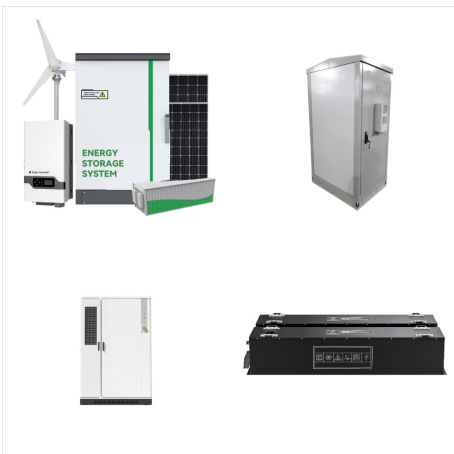
"We have a bulk of expiring short-term water take consents in 2026-27 awaiting certainty through a new plan. ORC is best to proceed given the likely length of time involved in the statutory processes in developing a resource management framework reform for New Zealand," she says. Changes to the National Policy Statement for Freshwater



Where our energy comes from. Around 60% of New Zealand's energy is supplied by fossil fuels. Once energy losses and distribution are taken into account, fossil fuels make up about 70% of our total final consumption. This includes petrol and diesel for vehicles, coal and gas for industrial boilers and household gas and LPG.



The aim of this thesis is to evaluate ORC systems and technologies from an energy and economic perspective. ORC systems are a growing renewable electricity generation technology, but New Zealand has limited local skills and expertise for identifying ORC resource opportunities and subsequently developing suitable technologies at low cost.



Organic Rankine Cycle (ORC), has become a preferred means of exploiting low to moderate enthalpy geothermal resources. It has been widely used to utilize the brine in existing single flash plants and in many other applications as an efficient and reliable way of employing a geothermal resource, in the form of brine only or brine and low



35th New Zealand Geothermal Workshop: 2013
 Proceedings 17 ??? 20 November 2013 Rotorua,
 New Zealand DESIGN AND BUILD OF A 1
 KILOWATT ORGANIC RANKINE CYCLE POWER
 GENERATOR David Meyer¹, Choon Wong¹,
 Frithjof Engel² and Dr. Susan Krumdieck¹
¹University of Canterbury, Private Bag 4800,
 Christchurch 8140 New Zealand ²Hamburg ???



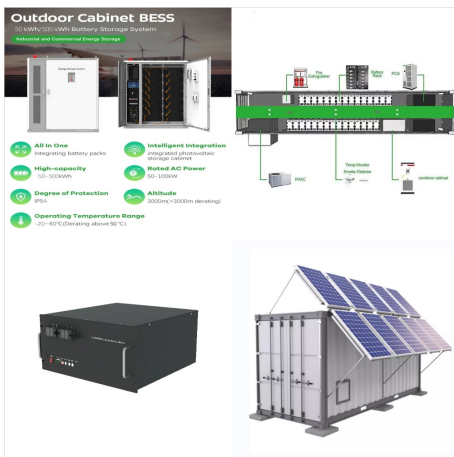
New technologies include low emission gasifiers,
 straw fuelled boilers and carbon negative energy
 generation as part of automated carbonisation
 plants. With its 250 employees and with over 50
 years of experience in engineering, manufacturing,
 installing and commissioning of about 3,000
 biomass fired heat and power plants Polytechnik
 has become



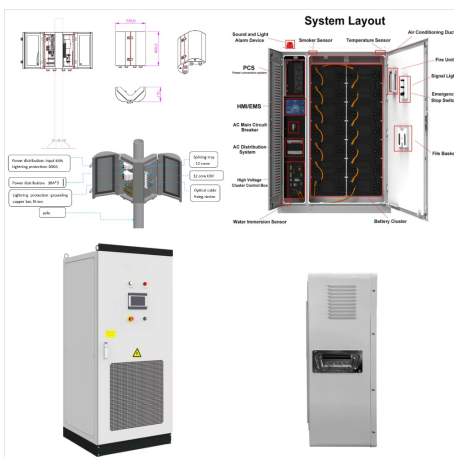
Having a good idea of what on-road costs are, and
 whether they are included or not in the sale price,
 means you will be better prepared when you walk
 into the dealership to buy your new car. If you're
 looking for further information to help you with your
 quest, download our Complete Guide to Buying a
 New Car today!



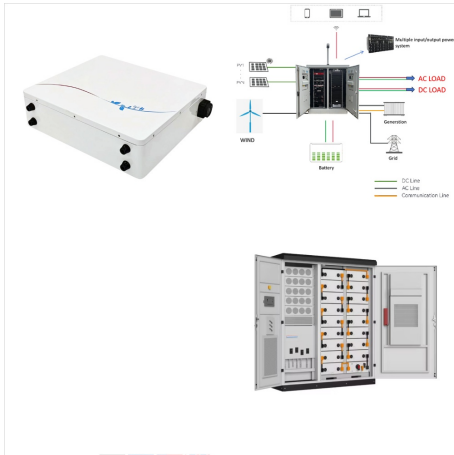
ORC - The Organic Rankine Cycle (ORC) is an evolving energy system for power production utilizing geothermal resources and recovered waste-heat. Ormat offers unique renewable power solutions based on the ORMAT(R) Energy Converter (OEC)



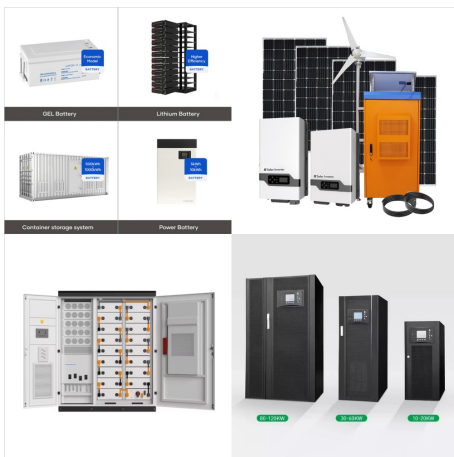
35th New Zealand Geothermal Workshop: 2013
 Proceedings 17 ??? 20 November 2013 Rotorua,
 New Zealand ENERGY RETURN ON
 INVESTMENT (EROI) FOR DISTRIBUTED
 POWER GENERATION FROM
 LOW-TEMPERATURE HEAT SOURCES USING
 THE EROEI), Net Energy, Organic Rankine Cycle
 (ORC), Binary Cycle, Embodied Energy.
 ABSTRACT



Mokai Geothermal Power Plant is an 111MW geothermal power project. It is located in Waikato, New Zealand. According to GlobalData, who tracks and profiles over 170,000 power plants worldwide, the project is currently active. It has been developed in multiple phases. Post completion of construction, the project got commissioned in February 2000.



ORC uses an organic fluid in a closed loop Rankine Cycle. The four main components of the ORC are the feed pump, vaporizer, expander, and condenser. New Zealand currently uses a number of ORCs for generating electricity from geothermal heat. The ORCs in New Zealand utilize moderate temperature geothermal fluids with temperatures of 150°C and



Therefore, these plants are of the utmost importance to New Zealand's power supply system. New Zealand has fixed a target to increase the proportion of electricity generation from renewable energy sources to 90% by 2025 (Ministry of Economic Development 2007 b). Geothermal energy will be one of the major tools in achieving this goal.



AND BP OIL NEW ZEALAND LIMITED, MOBIL OIL NEW ZEALAND LIMITED, AND Z ENERGY LIMITED AND CAIN WH??NAU AND DUNEDIN CITY COUNCIL AND ENVIRONMENTAL DEFENCE SOCIETY INCORPORATED AND GLENPANEL LIMITED PARTNERSHIP 33 ORC is available to mediate appeals from September 2024 and ???



Organic Rankine Cycle (ORC) systems are capable of utilising low-enthalpy geothermal sources. The aim of the Above Ground Geothermal and Allied Technologies (AGGAT) research programme is the development of ORC systems within New Zealand. An experimental scale ORC system, known as ORC-B, was built at the University of Canterbury to assist with the research ???



ORC is considered to be the most feasible technology among existing approaches to transform low temperature heat sources such as geothermal energy and industrial waste heat into electricity. Comprised of many parts ??? the turbine is one of the most significant components needed to convert this heat into mechanical energy to drive the generator



This is the third EPC contract Ormat has signed with Contact Energy and the 16th geothermal power plant Ormat has built in New Zealand. Under the signed 6 MW contract with Sarulla, Ormat will supply its air-cooled ???



Otago residents play a vital role in funding the Otago Regional Council through rates. Learn how rates are used and how to pay them. We collect rates directly from property owners in Otago. Need to check your current rates or where they're used? Find your ORC property rates, request a rates notice, or update your details. Get answers about ORC rates, manage payments, and ???