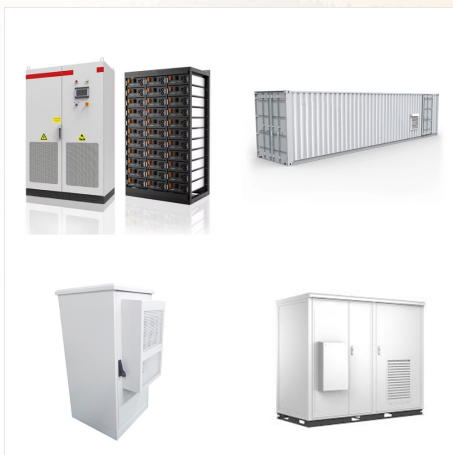




Tyler Radniecki, associate professor of environmental engineering at Oregon State University, is partnering with local water utilities and municipalities on strategies for enhancing wastewater treatment processes that could result in lower costs, cheaper sources of renewable energy, and, ultimately, cleaner water for everyone. Last year, Radniecki received a five-year, ???



In 2011, OSU purchased enough renewable energy to meet nearly 100% of its electricity needs and was the 5th largest college or university purchaser of renewable energy in the nation. The source of OSU's renewable energy was wind power. All of OSU's RECs were Green-e certified.



Earn an online energy policy certificate from Oregon State University and gain the skills that will help you advance clean energy solutions. Skip to main content. Request Info David Bernell is a professor who specializes in teaching students about renewable energy policies and how these policies incorporate changes into the daily routines



Clean Energy. The College of Engineering pursues several kinds of clean energy technologies, including both renewables and nuclear power. Our research groups are developing a variety of novel solar energy technologies, harnessing the power of ocean waves off the Oregon coast, improving processes for creating biomass and making wind turbines more efficient and safer ???



The Oregon Renewable Energy Siting Assessment project collected data and information through assessments to develop a report and mapping tool that provide an understanding of the opportunities and constraints that come with renewable energy and transmission development in Oregon. The ORESA project was funded through a \$1.1 million U.S. Department of Defense ???



Oregon State University, a member of the Pacific Marine Energy Center, is one of the nation's leaders in ocean wave energy research. Peek into the world-class facilities that enable early ???



As an energy systems engineering student at Oregon State University, you will design, develop, and make partnerships with your fellow students and with industry sponsors. Oregon State University 101 Covell Hall Corvallis, OR 97331-2409. Phone: 877.257.5182 Fax: 541.737.1805 Land Acknowledgement. Social Media. Facebook Instagram LinkedIn



OREGON STATE UNIVERSITY Open search box. On-Site Renewable Energy Rooftop Solar Arrays Western Shops Building. The Western Shops building enhances the campus experience for students, staff, and visitors by providing exemplary maintenance programs that support systems, structures, and grounds to foster university success. Completed in 2021



Oregon State's internationally-recognized professors specialize in renewable energy and transportation electrification. Potential Job Opportunities Power systems engineer : Designs, builds, and maintains the power grid infrastructure for companies like Portland General Electric, Bonneville Power Administration, Eugene Water and Electric Board



RENEWABLE ENERGY POLICY: Total Credits: 27

* Baccalaureate Core Course (BCC) ^ Writing
Intensive Course (WIC) Option Code: 842.

2024-2025 Catalog. Academic Advising; Academic
Regulations; Oregon State University B102 Kerr
Administration Building. Corvallis, OR 97331-2130.
Phone: 541-737-4331.



Coordinated by Oregon Sea Grant, the Oregon
Coast Renewable Energy Challenge is an annual
competition in which students show off devices they
built that are powered by water, wind or light. More
than Oregon Sea Grant Oregon State University
1600 SW Western Blvd Suite 350 Corvallis OR
97333 Corvallis Office: 541-737-2714 Visitor Center:
541



Energy Overview: Building Efficiency, Renewable
Energy, Policies, & Utility Data. Energy is central to
OSU's sustainability efforts. The university strives to
improve energy use practices by enhancing
efficiency in buildings while also utilizing on-site and
off-site renewable energy Oregon State University,
Corvallis, OR 97331-4501



Fats, oils, and grease often get a bad rap. But what if they could be used to help create renewable energy to power wastewater treatment plants, resulting in cleaner water for everyone? Tyler Radniecki, associate professor of environmental engineering at Oregon State University, is partnering with local water utilities and municipalities on strategies for using FOG ???



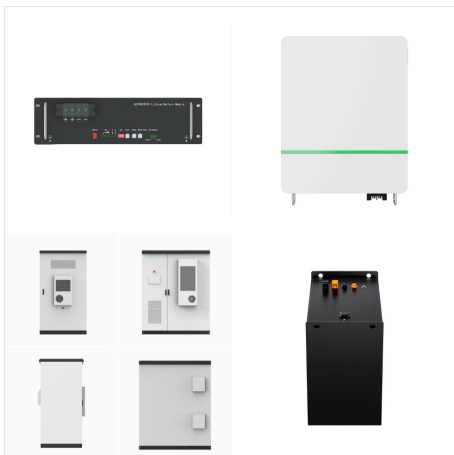
In this lesson student will learn about wind, wind devices, and wind renewable energy. Students will learn how to measure wind and what causes wind. Students can then apply their knowledge and build their own wind device. Oregon State University 18 Gladys Valley Center Corvallis, OR 97331. Phone: 541-737-0534 Email: Email



Students wishing to declare the ME Renewable Energy (RE) graduate option must first fulfill core mechanical engineering requirements in one of two ways: Declare an interdisciplinary option in ???



Oregon State University. Thermal-Fluid Sciences and Renewable Energy. Advanced Technology and Manufacturing Institute (ATAMI) Phone: 541.713.1354. Email: hailei.wang@oregonstate.edu. Google Scholar Profile. Dr. Hailei Wang is a Research Assistant Professor in the School of Mechanical, Industrial & Manufacturing Engineering at Oregon State



Ted K.A. Brekken is a professor in energy systems at Oregon State University. He received the B.S., M.S., and Ph.D. from the University of Minnesota in 1999, 2002, and 2005, respectively. He studied electric vehicle motor design at Postech in Pohang, South Korea, in 1999. He also studied wind turbine control at the Norwegian University of Science and Technology (NTNU) in ???



ODOE provides technical and policy expertise to support renewable energy project development across the state. Our staff offers guidance on the quality of renewable resources, permitting and funding, and the overall development process for energy projects.



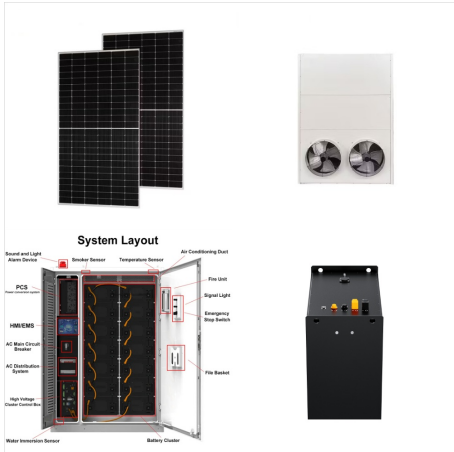
Students enrolled in the Graduate Certificate in Energy Policy are offered a choice of courses that will prepare them with the skills and competencies needed to understand economic, social, political and cultural dynamics of energy policy, and to design and evaluate energy policy as it pertains to their context. Rooted in political science, sociology, economics, and various natural ???



The Oregon Department of Energy has selected 34 recipients to receive nearly \$18 million in Community Renewable Energy Grant Program funds. The program supports planning and construction of renewable energy or energy resilience projects for Tribes, public bodies, and consumer-owned utilities.



Her work has applications in green design, specifically the design of renewable energy systems and environmentally sustainable products. Her research in renewable energy systems focuses on offshore wind energy and wave energy converter design. Oregon State University 101 Covell Hall Corvallis, OR 97331-2409. Phone: 877.257.5182 Fax: 541.737



The Energy Policy concentration includes courses that address policy and politics, institutions, markets, economics, technologies, and human impacts; and requires students to complete their MPP essay or PhD dissertation on a topic related to energy policy. This concentration provides students with a broad knowledge of US energy policy and institutions, how these impact the ???



Purpose The purpose of the MREC is to better facilitate interdisciplinary communication and activities between students and professionals who are contributing to the advancement of marine renewable energy and sustainable, equitable maritime practices. Students currently working in this field are associated with the OSU Pacific Marine Energy Center (PMEC). PMEC is a ???