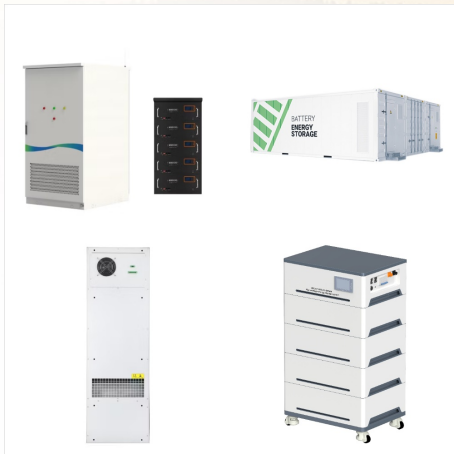




SWIFt Phase 2 is engaging wastewater treatment facilities in a voluntarily partnership to achieve 5% short-term and 25% long-term facility-wide energy savings and implement at least one next-generation technology (e.g., renewable energy, resource recovery, and advanced data management).



Palm Beach Renewable Energy Facility (PBREF) No. 1 ??? Originally built in 1989 and completely refurbished in 2008, PBREF No. 1 is a refuse derived fuel facility with a waste processing capacity



renewable energy Emissions reduction equivalent to removing 14,000 cars from the road each year Solar site located on a 646-acre The FPL Hibiscus Solar Energy Center in Westlake was the company's first solar energy center in Palm Beach County and opened in 2020. It was joined by the FPL Sabal Palm Solar Energy Center in Loxahatchee in

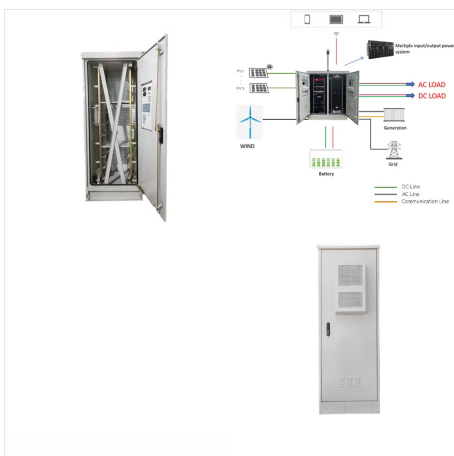
PALM BEACH RENEWABLE ENERGY FACILITY



Palm Beach Renewable Energy Facility (PBREF) No. 1 ??? Originally built in 1989 and completely refurbished in 2008, PBREF No. 1 is a refuse derived fuel facility with a waste processing capacity



The move comes in the wake of New York-based Hughes Energy's bid to build a facility in South Bay. The \$90 million plant would have processed roughly 175,000 tons a year of food waste and paper



Sabal Palm generates energy from the sun in virtual silence. Off a gravel road at the end of Orange Drive in Loxahatchee, the Sabal Palm solar facility looks like a weedy field, other than the

PALM BEACH RENEWABLE ENERGY FACILITY



In 2015, Florida's Palm Beach Renewable Energy Facility 2 became the first new WTE plant to come online in the United States since 1995. In addition to emissions concerns, the upfront capital costs of building a new ???



What is the impact of Renewable Energy Facility 2 on recycling? The Solid Waste Authority of Palm Beach County processes all curbside recycling through its Recovered Materials Processing Facility. Renewable Energy Facility 2 has an extensive metals recovery system that removes residual metals from the ash prior to it being placed in the landfill.



At the Renewable Energy Facilities the SWA reduces greenhouse gas emissions by generating electricity using garbage as a fuel source. This system decreases the volume of waste that goes to the landfill, limiting methane generation. In one year, the transfer stations save approximately 11 million miles on Palm Beach County's roads and

PALM BEACH RENEWABLE ENERGY FACILITY



Palm Beach Renewable Energy Facility (PBREF) No. 1 ??? Originally built in 1989 and completely refurbished in 2008, PBREF No. 1 is a refuse derived fuel facility with a waste processing capacity of 795,000 tonnes per year and generates up to 60 MW of clean electricity. The facility's operating contract expires in 2029 and includes renewal



Palm Beach County Renewable Energy Park, Palm Beach Renewable Energy Facility No. 2 6551 North Jog Road, West Palm Beach, FL 33412 (561) 478-3800 . Owner: Operator: Environmental Contact: Solid Waste Authority of Palm Beach County Covanta .



The SWA's Renewable Energy Facility 2 (REF 2) is a \$672,000,000, state-of-the-art waste-to-energy facility. The REF 2 project is the first of its kind in more than 20 years, and the most advanced, efficient, cleanest and greenest waste-to-energy power plant in the world. While reducing waste, it generates 100 megawatts of electricity for

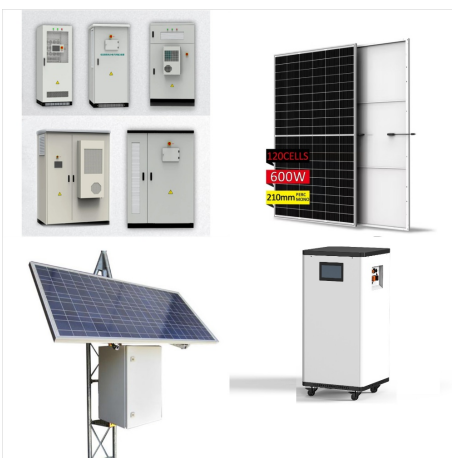
PALM BEACH RENEWABLE ENERGY FACILITY



The Authority owns and operates the Palm Beach Renewable Energy Park Landfill, also known as the North County Landfill. It's located west of the Florida Turnpike, near the intersection of S.R. 710 and Jog Road in northern Palm Beach County. Renewable Energy Facility 2, which began operation in 2015.



Palm Beach County's advanced waste to energy facility - the Palm Beach Renewable Energy Facility 2 (PBREF2) has been officially opened to process more than 1 million tons of municipal solid waste per year in Florida. The



FAU's Southeast National Marine Renewable Energy Center has received an \$800,000 grant from the U.S. Department of Energy to advance ocean energy technologies with a test facility offshore Palm Beach County.

PALM BEACH RENEWABLE ENERGY FACILITY



46 Renewable Energy jobs available in West Palm Beach, FL on Indeed . Apply to Project Coordinator, Project Scheduler, Energy Consultant and more! Renewable Energy jobs in West Palm Beach, FL. Sort by: Our renewable energy facility is the largest of its kind in North America and provides clean energy that powers our sugar operations,



Renewable Energy Facilities 1 & 2. In Palm Beach County, we're unique in that we have two waste-to-energy facilities. We receive your trash, combust it, and turn it into electricity. Yes, ???



The only new incinerator built in the U.S. since the 1980s was constructed in 2015 in Palm Beach County, Florida. including the Palm Beach Renewable Energy Facility #1, are in predominantly low-income communities and communities of color, commonly referred to as environmental justice (EJ) communities.

PALM BEACH RENEWABLE ENERGY FACILITY



Tangible Economics -West Palm Beach Renewable Energy Facility 2 ? Cost of the plant was \$674 million, or \$224,700 per ton of daily capacity. ? Processes waste for about \$25/ton, about the same cost as burying the waste in the West Palm Beach landfill. ? Capable of generating 625 kWh per ton of waste



the new facility. Palm Beach Renewable Energy Facility (PBREF) No. 2 is the first WTE project of its kind in more than 20 years in the United States (U.S.). B&W PGG and KBR are sharing the design and build work scope. Commercial operation is expected to begin in 2015.



The Palm Beach Renewable Energy Facility 2 (PBREF2) uses three mass-burn, waste-to-energy boilers and an environmental control system manufactured by Babcock & Wilcox Power Generation Group Inc (B&W PGG). It also includes DynaGrate air-cooled and water-cooled combustion grates designed by B&W Volund.

PALM BEACH RENEWABLE ENERGY FACILITY



Solar Energy in Palm Beach County Call 561-233-5120 for the Permit Center, 561-355-2222 for automated inspection scheduling, renewable energy and wind mitigation projects. PACE financing is repaid as an assessment on the property's regular tax bill, and is processed the same way as other local public benefit assessments (e.g. sidewalks



The FPL Hibiscus Solar Energy Center, the first in Palm Beach County, is under construction on a 400-acre site west of Seminole Pratt Whitney Road north of State Road 80 in Westlake. It's



Renewable Energy Facility 2; View of the Sky Bridge and Renewable Energy Facility 2 from the roof of the Education Center; of Palm Beach County. 7501 N Jog Road West Palm Beach, FL 33412. Phone: 561-640-4000; Contact Us; Social Media. ???