

What CAS number is lithium ion rechargeable battery?

Substance : Lithium-Ion rechargeable battery CAS number UN Class : Not specified : Even classified as lithium batteries, they are exempted from Dangerous Goods. UN - Recommendations on the Transport of Dangerous Goods Model Regulations.

Are lithium-ion rechargeable cells subject to UN Regulations?

UN - Recommendations on the Transport of Dangerous Goods Model Regulations. (ST/SG/AC. 10/1 Rev. 12) \*\*Lithium-Ion rechargeable cells are not subject to the UN Regulations if they meet the following provisions. (1)(3) The equivalent Lithium content calculated by 0.3 times of the rated capacity in Ampere-hour(Ah) is not more than 1.5g.

Who makes lithium ion batteries?

Hazard Toxicity : Lithium-ion battery : Panasonic Corporation, Automotive & Industrial Systems Company : 1-1 Matsushita-cho, Moriguchi City, Osaka, 570-8511, Japan : Energy Device Business Division : Engineering Department : +81-6-6994-4560 : Electrolyte is inflammable.

Are lithium batteries flammable?

Electrolyte and lithium metal are inflammable. Stacking or jumbling batteries may cause external short circuits, heat generation, fire or explosion. Fire extinguishing agent Extinguishing method Flush the eyes with plenty of clean water for at least 15 minutes immediately, without rubbing.

What is the equivalent lithium content of a battery?

The equivalent Lithium content is not more than 8g. Each battery is of the type proved to meet the requirements if each test in the Manual of Tests and Criteria, Part 3, sub-section 38.3. And they are out of scope for SP A154. (3) Composition

How to dispose a lithium ion battery?

DISPOSAL CONSIDERATIONS Specified collection or disposal of lithium ion battery is required by the law like as "battery control law" in several nations. Collection or recycle of the battery is mainly imposed on battery's manufacturer or importer in the nations recycle is required. Neither a container nor

# PANASONIC LITHIUM ION BATTERY MSDS



packing is contaminated during normal use.



Drivers User's Manual Applications for Panasonic  
PC Client Deployment Support Client Deployment  
Support (Driver Pack) Client Deployment Support  
(Tools) Recovery Image Download Service Is SDS  
(MSDS) for battery pack downloadable? Answer. Be  
available from "download now" button.



Notice: The information and recommendations set  
forth are made in good faith and are believed to be  
accurate at the date of preparation. Panasonic  
Industrial Company makes no warranty expressed  
or implied. 003-18 Page 2 of 2 DISPOSAL All  
Panasonic Lithium ion batteries are classified by the  
federal government as non-hazardous waste and  
are



The Panasonic 7.2V Rechargeable Camcorder  
Battery is specially designed for J-PX270,  
AG-DVC30, AG-DVX100, AG-HVX200/201,  
AG-HPX171, AG-HPX250 and AJ-PCS060  
Camcorders. Rechargeable Lithium-Ion Battery -  
VW-VBD58 Sale price \$199.99 Regular price (/)  
Support. Get Help. User Manuals. Product Support.  
Parts & Accessories.

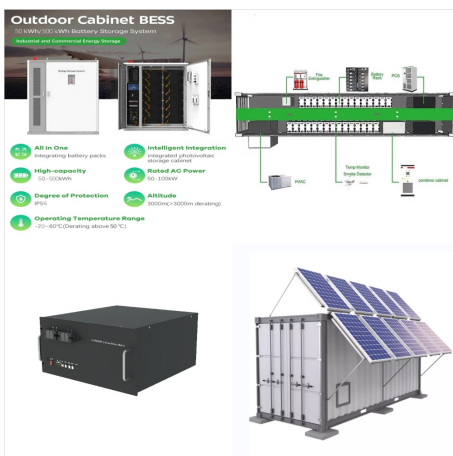
# PANASONIC LITHIUM ION BATTERY MSDS



Notice: The information and recommendations set forth are made in good faith and are believed to be accurate at the date of preparation. Panasonic Industrial Company makes no warranty expressed or implied. 015-11 Page 2 of 2. DISPOSAL All Panasonic Lithium ion batteries are classified by the federal government as non-hazardous waste and



All Panasonic Lithium Ion batteries are classified by the federal government as non-hazardous waste and are safe for disposal in the normal municipal waste stream. These batteries, however, Panasonic OEM Batteries Subject: MSDS, Lithium Ion Keywords: MSDS, Lithium Ion, LI ???

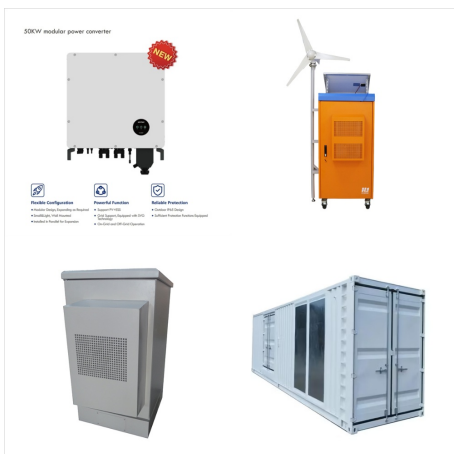


Panasonic Corporation makes no warranty expressed or implied. PRODUCT SAFETY DATA SHEET 1 Chemical product and company identification Name of Product : Lithium ion batteries (Pin Shape) Name of Company : Panasonic Corporation Address : 1-1 Matsushita-cho, Moriguchi -city, Osaka, 570 -8511, Japan Emergency Contact

# PANASONIC LITHIUM ION BATTERY MSDS



Panasonic Corporation Energy Company, SANYO Electric Co., Ltd. 1/5 Issued date : Jan. 1, 2012  
PRODUCT SAFETY DATA SHEET 1. Product and Company Identification Name of Product Lithium-Ion battery (or, Lithium-Ion secondary battery) Model name NCR18650 (NCR-B/T12SEB) Name of Company : Panasonic Corporation Energy Company, SANYO Electric Co., Ltd.



Product specifications of NCR18650BF, Lithium ion Batteries, Panasonic Energy. Product specifications of NCR18650BF, Lithium ion Batteries, Panasonic Energy. Lithium-ion Batteries Series / Type Cylindrical type Lithium-ion Batteries: Product Number NCR18650BF Specifications. Property Name Property Value



Product name: Lithium ion rechargeable battery cell  
Reference number: SDS-IBT-00026 Establishment / Revision: Jan. 1, 2017 1/5 Safety data sheet for product 1. PRODUCT AND COMPANY IDENTIFICATION Sanyo Electric Co., Ltd., Panasonic group ??>>Address: 222-1, Kaminaizen, Sumoto City, Hyogo, Japan ??>>Telephone number: +81-799-24-4111 ??>>Fax



# PANASONIC LITHIUM ION BATTERY MSDS



including the cell branded as Panasonic, excluding the cell whose shape is prismatic and two or more short / middle / long side excess 12mm/85mm/110mm.) Company name: Sanyo Electric Co., Ltd., Panasonic group Lithium ion batteries ("lithium ion batteries contained in equipment" or "lithium ion batteries packed with equipment" for



Product: Lithium-ion Batteries (Li-ion) Applicable models/sizes: All Cylindrical and Prismatic Lithium-ion batteries . Revision: ??? January 1, 2020 The batteries referenced herein are exempt articles and are not subject to the OSHA Hazard Communication Standard requirement. This sheet is provided as a service to our customers.



For the single cell batteries and multicell battery packs that are non-restricted to transport, use lithium-ion batteries inside label. For the single cell batteries and multicell battery packs which are restricted to transport (assigned to the Miscellaneous Class 9), use Class 9 Miscellaneous Dangerous Goods and UN Identification Number labels.

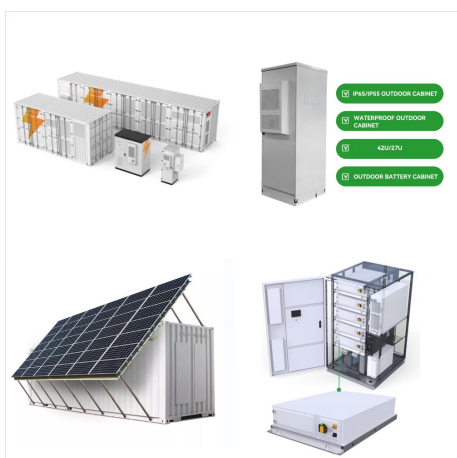
# PANASONIC LITHIUM ION BATTERY MSDS



Product name: Lithium ion rechargeable battery cell  
Reference number: SDS-IBT-00026 Establishment /  
Revision: Aug, 2016 1. PRODUCT AND COMPANY  
IDENTIFICATION ??? Product name: Lithium ion  
rechargeable battery cell ??? Product code: None  
(All models Sanyo manufactured and whose  
capacity is less than or equal to 5.4Ah,



Panasonic Corporation makes no warranty  
expressed or Manganese dioxide lithium battery  
Name of Company : Panasonic Corporation  
Automotive & Industrial Systems Company Address  
: 1-1 Matsushita-cho, Moriguchi -city, Osaka, 570  
-8511, Japan Telephone +81-6-6994-4560 Division  
Energy Device Business Division Department  
Engineering Department



The Material Safety Data Sheet (MSDS) is an  
important document which contains detailed  
information on the potential risks and hazards  
related to health, fire, reactivity and the  
environment. The purpose of this document is to  
help explain how to work safely with chemical  
products, like sealed lead-acid, alkaline, lithium, or  
nickel cadmium

# PANASONIC LITHIUM ION BATTERY MSDS



Name of Company : Panasonic Corporation  
Address : 1-1,Matsushita-cho,Moriguchi,Osaka  
570-8511 Japan Department : Energy Company  
Lithium-Ion Battery Business Unit, Battery Pack  
Engineering Group Representative : Toshiki Itoi  
Telephone number : +81-6-6991-1141 Facsimile  
number : +81-6-6994-4623 For emergency :  
+81-6-6991-1141



Material Safety Data Sheets (MSDS) are a  
sub-requirement of the Occupational Safety and  
Health Administration (OSHA) Hazard All  
Panasonic Lithium Ion batteries are classified by the  
federal government as non-hazardous waste and  
are safe for disposal in the normal municipal waste  
stream. These batteries, however, do contain  
recyclable

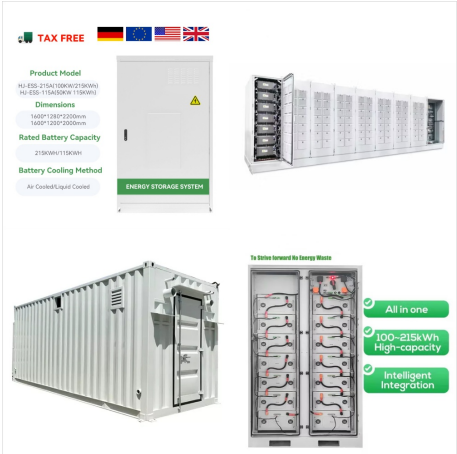


to transport (non-assigned to the Miscellaneous  
Class 9), use lithium batteries inside label. For the  
single cell batteries and multicell battery packs  
which are restricted to Li-SOCI2 Material safety  
Data Sheet. Electronically generated document ???  
no signature required . Rev. 19 Jan 2021 Risk  
phrases . Aluminum . chloride . anhydrous

# PANASONIC LITHIUM ION BATTERY MSDS



Product specifications of NCA103450, Lithium ion Batteries, Panasonic Energy. Product specifications of NCA103450, Lithium ion Batteries, Panasonic Energy. Lithium-ion Batteries Series / Type Prismatic type Lithium-ion Batteries: Product Number NCA103450 Specifications. Property Name Property Value



If the Lithium Ion Battery is subject to storage for such a long term (more than 3 months), it is recommended to recharge the Lithium Ion Battery periodically. 3 months: -10°C~+40°C, 45 to 85%RH And recommended at 0°C~+35°C for long period storage. The capacity recovery rate in the delivery state (50% capacity of fully charged) after storage is