



0 vehicles for sale in Svalbard and Jan Mayen. Vehicles; Dealers; Contact us; Sell my Car; Login; Search. Reset. SJ Vehicles; Price. Most viewed cars. Hyundai ix35. 150000130000. Cars in other countries. Cars for sale in Botswana; Cars for sale in Namibia; Cars for sale in South Africa



Lunar Calendar in Longyearbyen, Svalbard And Jan Mayen. Moon Phases Calculator for Longyearbyen, united kingdom with next new moon or next full moon, new moon and full moon. Find the next or previous new moon phases or ???

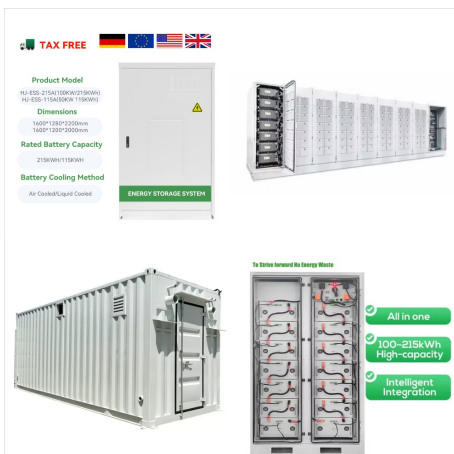


Discover the latest voting powers of the country Svalbard and Jan Mayen Islands (SJ) - comprehensive data on recent projects, disclosed investments and disclosed projects. Finances One. For Focus Out. Home Data Financial Results Countries / Economies Summaries Publications Glossary About.

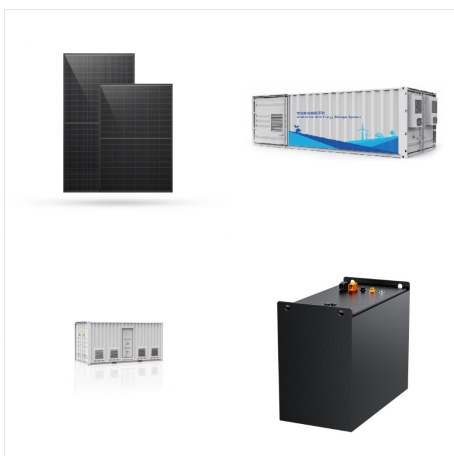
PANO SOLAR FOR SALE SVALBARD AND JAN MAYEN



Internet use in Svalbard and Jan Mayen in 2024.
There were 2,435 internet users in Svalbard and Jan Mayen in January 2024.. Svalbard and Jan Mayen's internet penetration rate stood at 93.8 percent of the total ???



Time for sunrise, sunset, moonrise, and moonset in Sjukjera ??? Jan Mayen ??? Svalbard and Jan Mayen. Dawn and dusk (twilight) times and Sun and Moon position. Takes into account Daylight Saving Time (DST).



Calculate sunrise, sunset, solar noon, day length, solar eclipse, shadow length and twilight for Longyearbyen, Svalbard And Jan Mayen Online interactive map with sun movement, sun location and get monthly sun data for Longyearbyen, Svalbard And Jan Mayen

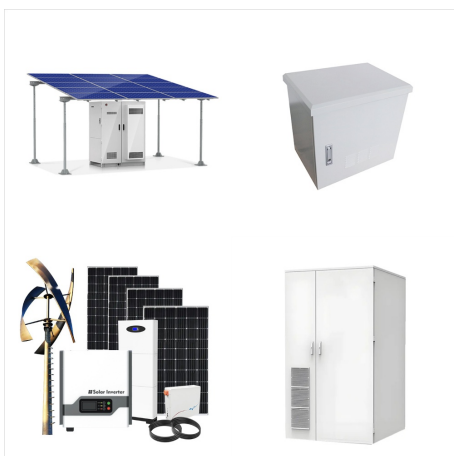
PANO SOLAR FOR SALE SVALBARD AND JAN MAYEN



A wet day is one with at least 0.04 inches of liquid or liquid-equivalent precipitation. In Longyearbyen, the chance of a wet day over the course of the summer is very rapidly increasing, starting the season at 10% and ending it at 25%.. For reference, the year's highest daily chance of a wet day is 27% on September 24, and its lowest chance is 9% on May 28.



Internet use in Svalbard and Jan Mayen in 2024. There were 2,435 internet users in Svalbard and Jan Mayen in January 2024.. Svalbard and Jan Mayen's internet penetration rate stood at 93.8 percent of the total population at the start of 2024.. Kepios analysis indicates that internet users in Svalbard and Jan Mayen increased by 423 (+21.0 percent) ???

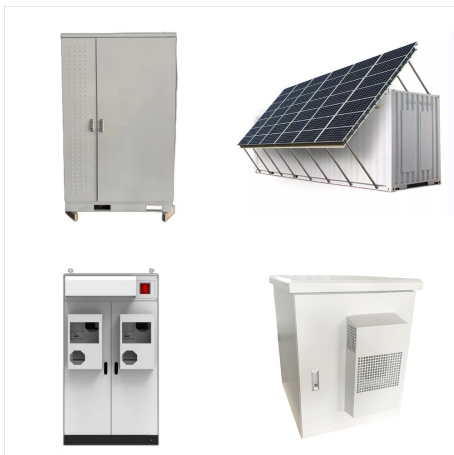


It will stretch 600 kilometers out into the ocean, where the cable is planned to be split. One cable will continue 500 kilometers to Jan Mayen, while the other will continue 1,200 kilometers to Svalbard. Space Norway AS (SPN) owns and is responsible for Svalbard's socially critical fiber connection.

PANO SOLAR FOR SALE SVALBARD AND JAN MAYEN



January Weather in Longyearbyen Svalbard & Jan Mayen. Daily high temperatures are around 15°F, rarely falling below -7°F or exceeding 34°F.. Daily low temperatures decrease by 2°F, from 6°F to 3°F, rarely falling below -18°F or exceeding 26°F.. For reference, on July 21, the hottest day of the year, temperatures in Longyearbyen typically range from 41°F to 47°F, while on ???



Im norwegischen Sprachgebrauch heisst die Inselgruppe Svalbard (???k?hle K?ste"). Jan Mayen ist eine 373 km² grosse Insel ca. 650 km nord?stlich von Island in der Gr?nlandsee und ist politisch gesehen ein integraler Teil Norwegens, geh?rt jedoch zu keiner der norwegischen Provinzen. Die Inselgruppe Spitzbergen liegt n?rdlich des



The Best Of Svalbard and Jan Mayen showcases the very best places to see, excursions to take & things to do in this beautiful country Winner of Three Travel Writing Awards in 2024. Double Win in 2024 Travel Blog Awards. Tall Ship Sailing with Star Clippers. Puglia with a Sprinkling of Basilicata. BVentuno Hotel, Bari, Puglia, Italy

PANO SOLAR FOR SALE SVALBARD AND JAN MAYEN



Svalbard et Jan Mayen. Svalbard et Jan Mayen est un terme statistique qui fait référence à deux territoires norvégiens de l'océan Arctique : l'archipel de Svalbard (ou plus souvent l'archipel du Spitzberg en français, bien que le nom ne désigne normalement que la plus grande île de l'archipel), et l'île Jan Mayen, (non loin du nord-est de l'Islande, ou à l'est du



Calculations of sunrise and sunset in Svalbard and Jan Mayen ??? Svalbard and Jan Mayen for December 2024. Generic astronomy calculator to calculate times for sunrise, sunset, moonrise, moonset for many cities, with daylight saving time and time zones taken in account. Solar Noon; Dec Sunrise Sunset Length Diff. Start End Start End Start



The island's only permanent settlement, Olonkin City (Olonkinbyen in Norwegian) houses the handful of people who work at the research stations. The accommodations are surprisingly comfortable, with a lounge, a bar, and telephone and Internet connectivity via satellite. A full-time chef cooks all meals for the close-knit population, which doubles in the summer months as ???

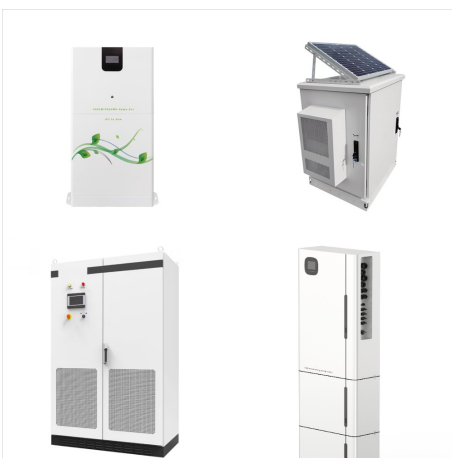
PANO SOLAR FOR SALE SVALBARD AND JAN MAYEN



This is the place to stay if you want to enjoy Svalbard. Close to the center, the kitchen has everything you need, view is nice to enjoy from the balcony. Remi provided all the information needed and was very nice to have him as a host on this precious island. Apartment rentals Svalbard and Jan Mayen;



Svalbard/Spitsbergen/Jan Mayen stamps for sale. Currently showing our top 89 listings from eBay sellers. Click for shipping details and money-back guarantee info. Svalbard/Spitsbergen/Jan Mayen stamps listings are chosen using ???



Svalbard and Jan Mayen (Norwegian: Svalbard og Jan Mayen, ISO 3166-1 alpha-2: SJ, ISO 3166-1 alpha-3: SJM, ISO 3166-1 numeric: 744) is a statistical designation defined by ISO 3166-1 for a collective grouping of two remote jurisdictions of Norway: Svalbard and Jan Mayen. While the two are combined for the purposes of the International Organization for Standardization ???

PANO SOLAR FOR SALE SVALBARD AND JAN MAYEN



Svalbard and Jan Mayen. 744. SJM. DOPA Explorer is the Joint Research Centre's web based information system on the world's protected areas, which helps the European Commission and other users to assess the state of and the pressure on protected areas at multiple scales.