



SmartDrive MX2+ is now compatible with Apple Watch! Easily control your SmartDrive with tap gestures, change settings, and track distances and battery levels right from your wrist. Enjoy full access to your Apple Watch and experience best-in-class battery performance when using it with your SmartDrive.

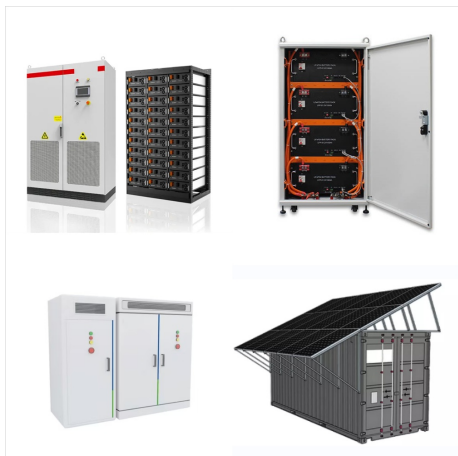


As a quick review, SmartDrive is a compact, lightweight, rear mounted power assist device that provides power to a manual wheelchair. It's an option that can allow manual wheelchair users who are no longer functional with propulsion to remain in their manual wheelchairs rather than moving into a full-blown power wheelchair.



Enjoy full access to your smart watch and experience best-in-class battery performance when using it with your SmartDrive. SmartDrive MX2+ App for Apple Watch is compatible with Apple Watches Series 5 and newer running watchOS 8 or newer. SmartDrive MX2+ App for Samsung Galaxy Watch is compatible with Samsung Galaxy Watch 4 and newer.

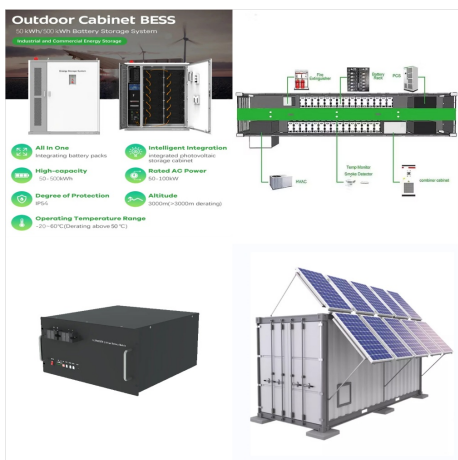
PERMOBIL SMARTDRIVE MX2 POWER ASSIST SYSTEM



SmartDrive power assist is proven to reduce pushing by 80% which allows manual wheelchair users to do more with their mobility. Since 2012, this motorized power assist solution has helped individuals to maintain their independence, keep up with their active lifestyles, and reduce the risks of repetitive strain injuries associated with wheelchair propulsion.



Existing Perodua owners who renew insurance with authorised Perodua showrooms are eligible for a one (1) year FREE Auto Assist membership. The coverage of your Auto Assist membership will take effect from the start date of the insurance coverage.



The SmartDrive MX2+ is a power-assist device that easily attaches to your manual wheelchair, pushing you and your wheelchair over almost any surface. Registered NDIS provider - we ???? NDIS #4050000058. Close. Want to subscribe? Subscribing means you are the first to hear about our exclusive offers and latest product arrivals. Go.

PERMOBIL SMARTDRIVE MX2 POWER ASSIST SYSTEM



Buy Smart Drive MX2+ online at GTK. Pushing a manual wheelchair can put stress on the upper body and lead to serious issues in the future. Sleep Systems; Commodes and shower chairs; Beds; Mattresses; Hoists and slings; Accessories; Standing frames; Walkers and Gait Trainers; Categories: Permobil, Power Assist Devices, Permobil Manual



EN - SmartDrive MX2+ User's Manual 4 EN - SmartDrive MX2+ User's Manual 5 - The SmartDrive is not designed to drive up or down large curbs / steps. Only perform this maneuver when absolutely necessary and always ask for help. Also be sure to turn OFF the power assist [via SpeedControl, SwitchControl and PushTracker / E3] before



The SmartDrive power-assist system from Permobil keeps getting easier and quicker to set up and use. Late last year, Permobil announced that the PushTracker E2, the wearable companion device for the SmartDrive MX2+, would include pre-installed apps. Ben Hemkens, Permobil's Director of Product Management, said in the December 2020 ???

PERMOBIL SMARTDRIVE MX2 POWER ASSIST SYSTEM



SmartDrive offers a range of controls to deliver a seamless power assist experience, providing an opportunity for 80% fewer pushes. SmartDrive was created with manual wheelchair users in mind. The mounting location, the ergonomic handle, the weight, and the OmniWheel were all designed to give manual wheelchair user access to fewer pushes.



SmartDrive was created with manual wheelchair users in mind. The mounting location, the ergonomic handle, the weight, and the OmniWheel were all designed to create a seamless power assist experience. Features. The SmartDrive MX2+ can power you up steep hills and through thick carpet. It's intuitive to use and will go for miles on a single charge.



The Permobil SmartDrive MX2+ Wheelchair Power Assist Device is available from Beyond Mobility. Assessments and demonstrations throughout Cornwall, Devon, Somerset and Dorset available with no-obligation quotations. Empower your active lifestyle with the SmartDrive MX2+ Power Assist for Wheelchairs - Available with multiple control options

PERMOBIL SMARTDRIVE MX2 POWER ASSIST SYSTEM



The Permobil SmartDrive MX2+ is a revolutionary new light-weight power assist device that gives greater freedom and power to wheelchair users. Just push your handrims like normal to go. The unit remembers your speed and maintains it until you brake, just like you normally would to stop your wheelchair.



READY TO ORDER YOUR OWN SmartDrive MX2+ Power Assist System? Order your brand new SmartDrive MX2+ Power Assist System safely online. We ship all in-stock orders within 1-3 business days with Free FedEx shipping. FOR QUESTIONS, PLEASE CALL US: 800-711-1940. We do not accept insurance or Medicare. Add Permobil SmartDrive MX2+ to your

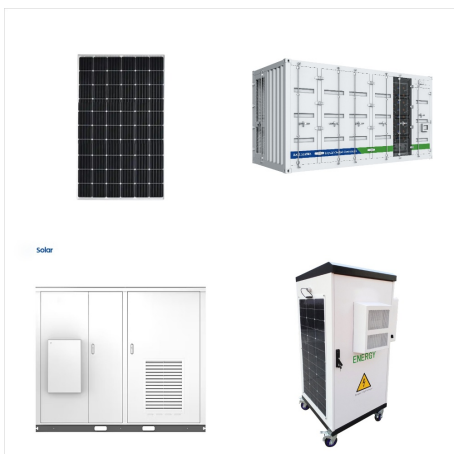


Powered by a lithium-ion battery and a 250 W motor, the SmartDrive MX2+ will power a wheelchair for up to 12 miles in a single charge! It is also designed to be lightweight and compatible to be used with virtually any wheelchair such as ???

PERMOBIL SMARTDRIVE MX2 POWER ASSIST SYSTEM



SmartDrive offers a range of controls to deliver a seamless power assist experience, providing an opportunity for 80% fewer pushes. SmartDrive was created with manual wheelchair users in mind. The mounting location, the ergonomic handle, the weight, and the OmniWheel were all designed to give manual wheelchair user access to fewer pushes.



Our affordable price for Permobil's SmartDrive MX2+ Power Assist is not all you will be excited about when you buy from us; you will also enjoy our priceless customer service. Seamless power assist experience Pushing a manual wheelchair can put stress on the upper body and lead to serious issues in the future. SmartDrive gives you freedom to do



Perodua Smart Drive Assist or commonly known as ASA 3.0 is Perodua's latest Advanced Safety Assist feature, first seen on the Perodua Ativa. ASA is basically a safety system that steps in when the driver is distracted. It helps the car avoid collisions by taking preventive measures.

PERMOBIL SMARTDRIVE MX2 POWER ASSIST SYSTEM



The SmartDrive has been tested and conforms to all applicable requirements of ANSI/RESNA Standards for Wheelchairs - Volume 1 and Volume 2 and EN 12184. NOTE: A wheelchair's specifications provided by its manufacturer may be slightly affected by ???



Users are now able to start, stop, and adjust their speeds by simply rotating the dial forwards or backwards. This new standard controller is provided as a free option when purchasing a SmartDrive. It is wired and is powered directly by the SmartDrive unit, so there is no need to charge two devices, and setup takes less than 5 minutes.



The NEW SmartDrive MX2+ now with the PushTracker wristband makes the already award-winning wheelchair power assist even better 1/2 it will truly change your life. It can power you up steep hills and through thick carpet. It's intuitive ???

PERMOBIL SMARTDRIVE MX2 POWER ASSIST SYSTEM



SmartDrive offers a range of controls to deliver a seamless power assist experience, providing an opportunity for 80% fewer pushes. SmartDrive was created with manual wheelchair users in mind. The mounting location, the ergonomic handle, the weight, and the OmniWheel were all designed to give manual wheelchair user access to fewer pushes.



The SmartDrive MX2+ is the lightest rear mounted power assist device available for seamless integration. EN/NZ. ???? No translation data. Products; Resources; Clinical Services; Permobil's clinical research team produced the "Permobil White Paper: A systematic review of the evidence on power assist devices" to increase the knowledge and



Page 6: Smartdrive Setup EN - SmartDrive MX2+ User's Manual EN - SmartDrive MX2+ User's Manual SmartDrive Setup To turn power assist ON with SwitchControl [take out of the standby state], press [with the 0.9 lbs (4 N) minimal needed force] for longer than [0.5] seconds, and release one of the buttons .

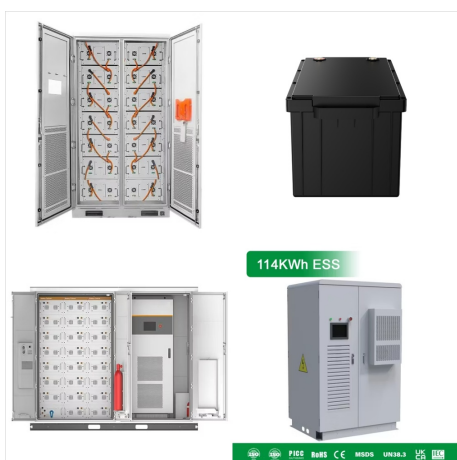
PERMOBIL SMARTDRIVE MX2 POWER ASSIST SYSTEM



Find helpful customer reviews and review ratings for SmartDrive MX2+ Wheelchair Power Assist with Free Handy Bag Dynamic Wheelchair Backpack at Amazon . Read As far as I know this is by far the lightest weight power assist system. there's much better quality options for a power assist and permobil should be ashamed of the build



SwitchControl gives users an easy, out-of-the box control option for their SmartDrive. With the push of a button, SmartDrive can be engaged for a momentary burst of power or activated in latched mode for consistent power over extended distances. SwitchControl can also be ordered with a mono jack port to access with any external mono jack switch.



Created with manual wheelchair users in mind, the SmartDrive MX2+ Power Assist by Permobil provides a seamless power assist experience. Between thousands of pushes a day, frequent transfers, and the other motions of daily life, manual chairs users place extra strain on the muscles and joints in their arms, causing fatigue and long-term issues.