



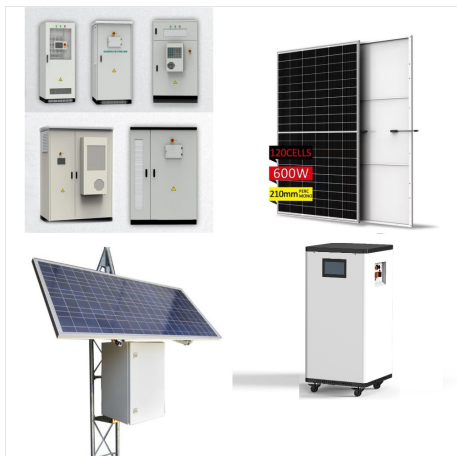
Cultural Significance of the Red Drinking Cup. Icon of American Parties: The red Solo cup has become an emblem of American parties, particularly in college campuses and backyard barbecues. Its presence is almost synonymous with fun and socializing. Pop Culture References: The red Solo cup's cultural impact has extended into popular culture gained even more ???



Museum Artifact: "Dairy Treat" Paper Cups, 1967. Made by: Solo Cup Company, 1501 E. 96th Street, Chicago, IL [Pullman] Research is underway on this one and a full write-up will be coming soon. Pepsodent Company Peter Hand Brewing Co. Pines Winterfront Co. Platt Luggage Inc. Playskool MFG Co. Precision Scientific Co.



Peter G Mandola, age 43, lives in Arlington, VA. Find their contact information including current home address, phone number 757-437-0062, background check reports, and property record on Whitepages People Search, the most trusted online directory.



Solo Cup Operating Corporation Overview. Solo Cup Operating Corporation filed as a Statement & Designation By Foreign Corporation in the State of California on Friday, October 9, 1981 and is approximately forty-three years old, according to public records filed with California Secretary of State. A corporate filing is called a foreign filing when an existing corporate entity files in a state



Strategy and sales are managed from Belgium, and operations are carried out in Ostrava, Czech Republic. Installed since 2008 in the premises of a well known co packer 10.000 m<sup>2</sup> building, 250 people operating in a 3 shift activity), we make sure that all needs of our customers are handled with the deserved care.



Solo Cup also announced today the appointment of Peter Mendola, 51, as senior vice president of manufacturing. Mr. Mendola will be responsible for overseeing all of the company's operations. Mr. Mendola spent the past 19 years with Georgia-Pacific/Dixie (R), most recently as vice president of paper operations. Previously, Mr. Mendola held a



The most common Solo Cup Company email format is [first].[last] (ex. jane.doe@solocup ), which is being used by 90.6% of Solo Cup Company work email addresses. Other common Solo Cup Company email patterns are [first][last\_initial] (ex. janed@solocup ) and [last] (ex. doe@solocup ).



Aprenda mais sobre a cultura de Solo Cup"s, veja como ? trabalhar l?, veja avalia??es, and ache oportunidades de emprego. Comparably. Search Everything. Companhias Pesquisa. Profile. Rate Your Company. Dimens?es de Cultura Mais Bem Avaliadas. N/A. CEO do ???



Find out what works well at Solo Cup Company from the people who know best. Get the inside scoop on jobs, salaries, top office locations, and CEO insights. Compare pay for popular roles and read about the team's work-life balance. Uncover why ???



The company also named Peter J. Mendola, senior vice president of manufacturing and Malcolm S. Simmonds, senior vice president of foodservice sales and marketing. Solo Cup also announced the election of Neil Harrison to its Board of Directors, effective as of April 2, 2007. Harrison replaces Norman W. Alpert on the 11-member board and ???



Solo Cup Company employs 754 employees. The Solo Cup Company management team includes Amie Gartrell (), Sue Koziol (Purchasing Manager), and Pete Mendola (Sr. Vice President Operations). Get Contact Info for All Departments



Solo Cup Company is an American manufacturer of disposable consumer products including beverage cups, disposable plates, and bowls. Solo Cup Company is located in Lake Forest, Illinois, and in 2006 had sales of \$2.4 billion. On May 4, 2012, Solo Cup Company was acquired by Dart Container.





Solo Cup Company Overview. Solo Cup Company filed as a Foreign Business Corporation in the State of New York on Monday, March 28, 1955 and is approximately sixty-nine years old, according to public records filed with New York Department of State. A corporate filing is called a foreign filing when an existing corporate entity files in a state other than the state they ???



(Crain's) -- Solo Cup Co. said Tuesday it will close a plant in Wheeling and transfer the plant's operations to Solo's plant on Chicago's Southwest Side. The Wheeling plant, at 1175 Wheeling Road



Solo was acquired by Dart Container Corporation in 2012, and creates the signature solo cups in various factories in the Midwest, including several in and around Chicago. A simple solution for how often these plastic cups are wasted may seem to be recycling, but unfortunately, the solo cup's life story complicates this.



Peter J. Mendola (SVP, Operations) Director, Audit Committee. NA. Peter W. Calamari. and financial turnaround at Solo Cup, a manufacturer of disposable dining wares. Solo Cup's troubles wer Skip to of disposable dining wares. Solo Cup's troubles were compounded by the acquisition of a larger rival, Sweetheart Company, which had its



Solo History. 1936: Leo Hulseman founded the SOLO Cup Company, making paper cone cups. 1970s: The Hulseman family expanded the paper product portfolio to include plastic cups ??? originally in red, blue, yellow, and peach. 1976: The iconic plastic SOLO Cup was patented 1980???2000: SOLO expands offerings to more households, restaurants, and grocers ???



, Solo Cup Company has simplified life with single-use products that enrich everyday meals and special occasions. Solo is exclusively focused on the manufacture of single-use products used to serve food and beverages for the consumer/retail, foodservice and ???

# PETER MENDOLA SOLO CUP COMPANY



More than 7 billion red Solo cups are tossed into landfills every year. Each year one company alone, Solo Cup Co., produces 7.4 billion of these cups that are used once and then tossed into landfills. On any given day, Solo produces 35 million plastic polystyrene cups and lids from its 51-acre plant in Urbana, Illinois.