

What batteries can a solar charge controller charge?

The solar charge controller is compatible with batteries ranging between 12V and 48V, another reason why it's the best for large systems with large batteries. It can charge four types of batteries: Gel, Flooded, Sealed, and User-defined (you can set your battery parameters. Ideal if you have a lithium-ion battery). 4. Easy to Use LCD display

Do solar charge controllers have an upper voltage limit?

All charge controllers have an upper voltage limit. This refers to the maximum amount of voltage the controllers can safely handle. Make sure you know what the upper voltage limit of your controllers is. Otherwise you may end up burning out your solar charge controller or creating other safety risks.

Which batteries are compatible with the epever solar charge controller?

The EPEVER solar charge controller is compatible with both lead-acid and lithium-ion batteries. Compatible lead acid batteries are sealed, gel, and flooded. These three plus lithium ion cover most of the deep cycle batteries used in homes. 4. Load Output with Multiple Control Modes

What voltage is a charge controller?

These are more affordable, lower voltage (100-150V) units, which are generally designed for 12V or 24V battery systems, although several can be used on 48V batteries. A number of these charge controllers also feature inbuilt load control terminals for basic DC lighting and other loads.

Who makes the most reliable charge controllers for photovoltaic systems?

Specialty Concepts Inc. is the manufacturer of the most reliable line of charge controllers for photovoltaic systems. With over 39 years of experience, they have produced high-quality, reliable units. Today, there are almost 4,000,000 pieces of Specialty Concepts' equipment throughout the world controlling MANY MEGAWATTS of PV power.

PHOTOVOLTAIC BATTERY CHARGE REGULATOR



SOLPERK Solar Charger Controller, 8A Solar Panel Battery Smart Regulator for 12v Solar Battery Charger, Solar Battery Maintainer, 12v Battery Power Kit for RV, Boat, Car, Shed. 4.2 out of 5 stars. 234. \$15.99 \$ 15. 99. FREE delivery Mon, Mar 18 on \$35 of items shipped by Amazon. Popular Brand Pick.



So if you're using a 12v solar panel to charge a 12v car battery, and the solar panel generates more than 12v, there is a danger of overcharging. The controller is there to manage the amount of power that is going to the battery, when. This is based on three stages of battery charging: bulk, absorption and float.



Assume you take a discharged 100-amp hour battery and charge it with a 30-watt solar panel under ideal summertime light conditions. After a full week, the battery will be just about fully charged. Using this example, you can see that it will take at least 100 watts of solar power to recharge a 100-amp hour battery in a few days.

PHOTOVOLTAIC BATTERY CHARGE REGULATOR



EPEVER MPPT Charge Controller 10A 12V/24V
Auto Max PV 60V Solar Panel 130W/260W
Regulator Charger with LCD Display Negative
Ground for Gel Flooded Sealed LiFePO4 (MPPT
10A) Gdcreestar Solar Charge Controller USB 12V
/ 24V Auto 10A Solar Panel Battery Controller
10Amp PWM Solar Regulator with Dual USB LCD fit
for Small Solar System



POLYCRYSTALLINE Solperk 10W Solar Panel
Charging Kit with 8A Controller for 12V Batteries.
Maximize battery life with a 10W Solar Panel Kit
featuring high-efficiency polycrystalline A+ solar
cells for up to 30% conversion efficiency.



Buy Morningstar SunSaver 6A PWM Solar Charge
Controller (SS-6L-12V) - Solar Panel Regulator for
12V Batteries, Four Stage Battery Charging, LVD,
HazLoc Rated, Low Noise, 5 Year WTY - Designed
in The USA: Energy Controllers - Amazon FREE
DELIVERY possible on eligible purchases
ECO-WORTHY 30A Solar Charger Controller Solar
Panel ???

PHOTOVOLTAIC BATTERY CHARGE REGULATOR

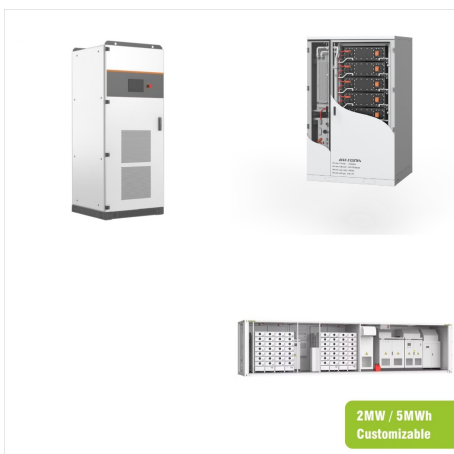


A charge controller in an off-grid solar system also prevents reverse current from batteries to solar panels during overnight or cloudy days. Depending on its type, it can improve system efficiency and optimize power harvest from solar panels.

Furthermore, a charge controller typically includes monitoring features that allow system parameters such as current, voltage, and energy to be ???



Charge controllers also have amperage ratings, so if you have a 200W solar panel that generates between 10A and 12A during peak generation times, your solar charge controller should be rated at 15A. It is always better to install a solar charge controller that can accommodate a little more than the maximum voltage and amperage the system can



A solar charge controller regulates voltage and current when you use photovoltaic panels to charge a battery. Without this device, your batteries would be damaged by overcharge. Charge controllers

PHOTOVOLTAIC BATTERY CHARGE REGULATOR



The solar charge controller sits between the solar panels and battery bank. Both MPPT and PWM charge controllers limit the amount and rate of charge to your batteries, provide overload protection, disconnect at low voltages, and block reverse current. You'll typically need a charge controller for any solar panel larger than five watts.



A solar charge controller regulates voltage and current when you use photovoltaic panels to charge a battery. Without this device, your batteries would be damaged by overcharge. Charge controllers



The laboratory model is tested using a less expensive PV panel, battery, and DSP controller. The charging behavior of the solar-powered PWM charge controller is studied compared to that of the

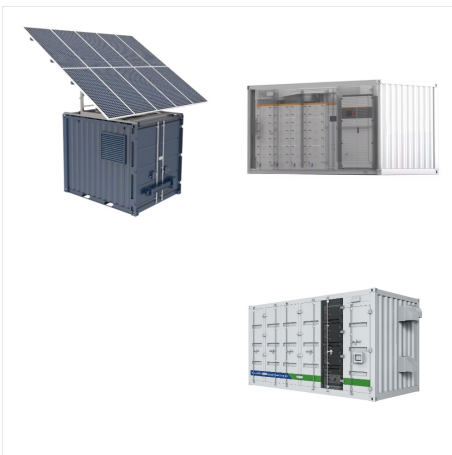
PHOTOVOLTAIC BATTERY CHARGE REGULATOR



A solar charge controller takes the electricity from the solar panel ??? around 16 to 20V ??? and downregulates it to the voltage the battery currently needs. This amount can range from 10.5V to 14.6V depending on the battery's ???



Amazon : [Topsolar 100W 12V Solar Panel Kit Battery Charger 100 Watt 12 Volt Off Grid System for Homes RV Boat + 30A Solar Charge Controller + Solar Cables + Brackets for Mounting : Patio, Lawn & Garden 10W 12V Solar Panel Kits 10A PWM Controller Adjustable Mount Tilt Rack Bracket](#)



OOYCYOO MPPT Charge Controller 60 amp, 12V
24V Auto 60A Solar Panel Charge Regulator, Max
100V Input with LCD Display for Lead-Acid Sealed
Gel AGM Flooded Lithium Battery. VGEBY
30A/50A Solar Panel Controller, Solar Panel Battery
Intelligent Regulator with Dual USB Port and LCD
Display 12V/24V

PHOTOVOLTAIC BATTERY CHARGE REGULATOR



Depending on the battery electrolyte, the charge controller might use different charging stages: Lead-Acid Batteries: (1) Bulk, (2) Absorption, (3) Float, and (4) Equalization (only for flooded batteries) Solar lights generally come with an added solar panel to power an LED light, for this type of system a PWM charge controller will

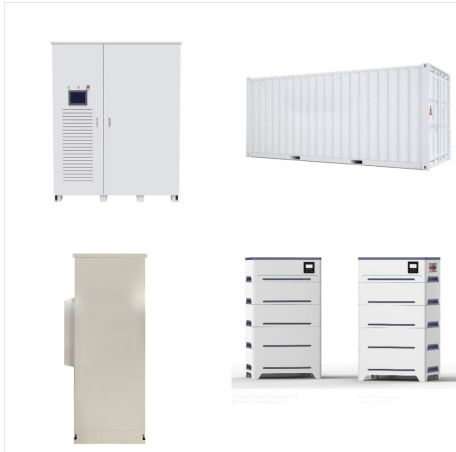


Smart MPPT Technology: This solar panel battery charger comes with built-in protection system. The innovative MPPT technology allows to deliver high tracking efficiency of up to 99% and peak conversion efficiency of 98%, improve 20%-30% utilization rate Built-in UltraSmart MPPT Charge Controller, 12 Volt Solar Panel Trickle Charging Kits



The fact is, a charge controller is necessary for the proper functioning of any battery-based energy system. And a solar charge controller needs to be sized depending on the system capacity and voltage. The point is, choosing the right solar panel regulator depends on determining what works best for your system. Want to learn more?

PHOTOVOLTAIC BATTERY CHARGE REGULATOR

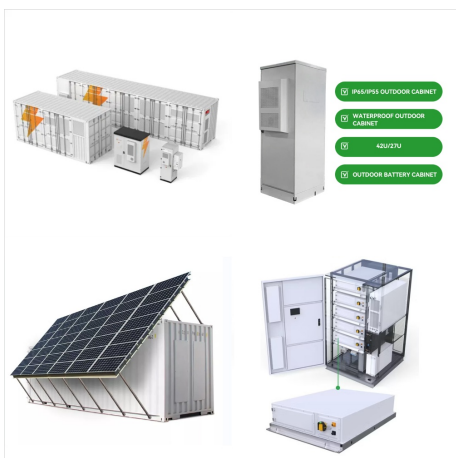


When solar panel is connected to the solar charge regulator, the charging LED will go on to show that the 12V rechargeable battery is receiving charge from the solar panel. The charge regulator provides following protections for the whole system.

Over-discharge protection: When activated, "Low Voltage" indicator will go on, the charge



A photovoltaic kit consists of solar panel and charge regulator to charge a battery. It is important to match these properly to achieve a maximum energy yield and good system performance. Even if you do not have enough surface available to become completely self-sufficient, a small solar system will still improve your battery runtime significantly.

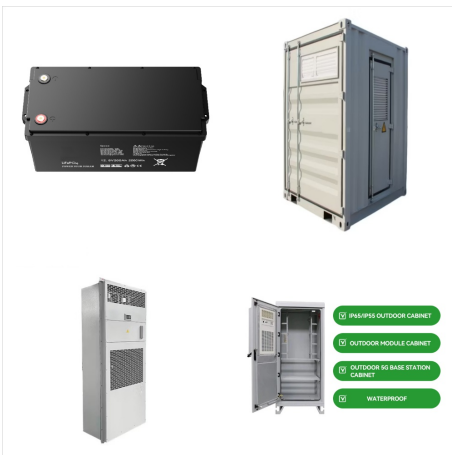


It consists of a solar panel which acts as a generator, a DC-DC converter which ensures an adaptation between the generator and the battery, a charge controller that regulates the converter and finally the lead-acid battery which represents the charge. Figure 2. Battery charging system. The solar panel and the DC-DC converter

PHOTOVOLTAIC BATTERY CHARGE REGULATOR



After testing 5 MPPTs side by side and comparing their spec sheets, I think the Victron SmartSolar MPPT is the best MPPT charge controller on the market. I thought it had the best build quality and was the easiest to set ???



A charge controller is recommended for any PV system as they prevent the batteries from overcharging, resulting in irreparable damage, battery failure, or diminished lifespan. Smaller systems such as portable PV units may ???

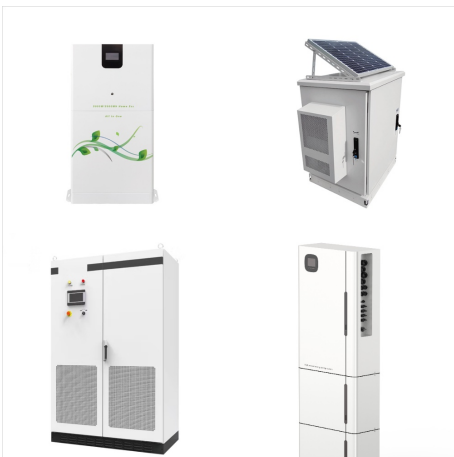


What Is a Solar Charge Controller? A solar charge controller is an essential element in any solar-powered system, whether it be a home or an RV. This gadget regulates the power flow between the solar panel and the battery, ???

PHOTOVOLTAIC BATTERY CHARGE REGULATOR



MPPT SOLAR CHARGE CONTROLLER Circuit breaker DC Load Battery 1. Install air circuit breaker between controller and batteries. Turn off the circuit breaker, then connect batteries to controller with correct polarity.



So if you're using a 12v solar panel to charge a 12v car battery, and the solar panel generates more than 12v, there is a danger of overcharging. The controller is there to manage the amount of power that is going to the battery, ???



But a solar charge controller featuring MPPT technology can continuously track arrays' maximum power point so as to get the maximum amount of power to charge the battery. Take a 12V system as an example.

PHOTOVOLTAIC BATTERY CHARGE REGULATOR



Volt MPPT Solar Charge Controller, Bateria Power
Intelligent Portable Solar Panel Controller, Max PV
150W 30Voc Solar Regulator for Gel AGM
Lead-Acid, Lithium LiFePO4 Battery (SunRock 10)
4.2 out of 5 stars 228



What is Pulse Width Modulation Or A PWM Charge
Controller? A PWM (Pulse Width Modulation)
controller is an (electronic) transition between the
solar panels and the batteries:. The solar charge
controller (frequently referred to as the regulator) is
identical to the standard battery charger, i.e., it
controls the current flowing from the solar panel to
the battery bank to prevent ???



???COMPACT & PORTABLE ???Improved over
the PWM charge controller, Allto Solar MPPT
(Maximum Power Point Tracking) charge controller
bringing a new generation to maximizing use solar
power to charge your system, it is 25% smaller in
size but captures as high as 15%-30% performance
to charge the battery with no additional self power
consumption.

PHOTOVOLTAIC BATTERY CHARGE REGULATOR



Solar charge controllers. We feature a wide range of both MPPT and PWM solar charge controllers. See the BlueSolar and SmartSolar Charge Controller MPPT - Overview. In our MPPT model names, for example MPPT 75/50, the first number is the maximum PV open circuit voltage. The second number, 50, is the maximum charge current.



Solar Charge Controllers With over 4 million products sold in over 100 countries since 1993 ??? functioning in some of the most extreme environments & mission-critical applications in the world ??? Morningstar Corporation is truly "the leading supplier of solar controllers and inverters." Morningstar's stable management along with the lowest employee turnover rate has led to our ???