



molded case circuit breakers and molded case switches rated up to 1000V DC, in-tended for use with photovoltaic systems. DC, complete with jumpers for connection of poles in series. Standards UL489B Dimensions All PV breakers are the same size as their standard UL/IEC counterparts. Weights T1 - 3.2 lbs. T4 - 6.18 lbs. T5 - 8.55 lbs. T6 - 20



At BENY, we take pride in being a leading photovoltaic DC circuit breaker manufacturer in China. With 30 years of industry experience, we understand what the market needs, and manufactures modular modular circuit breakers based on your specifications. Molded Case Circuit Breaker. Matching global standards, our molded case circuit breakers

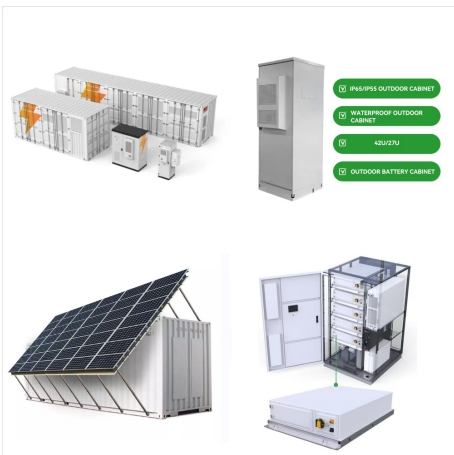


The SACE Tmax PV range of molded-case circuit-breakers and switch-disconnectors for photovoltaic applications offers an increasingly comprehensive, leading-edge solution that anticipates the market trends. Global leader in this area, ABB continues to update its range by proposing a series of products to UL and IEC Standards for protecting and

PHOTOVOLTAIC MOLDED CASE CIRCUIT BREAKER



DC Molded Case Circuit Breaker MCCB,
HSM1PV-250, 2 Poles, DC550V 150A, Photovoltaic
Circuit Breaker, for Solar PV System Solar Panels
Grid System Visit the Heschen Store 4.6 4.6 out of 5
stars 9 ratings



DcMCCB Photovoltaic DC Molded Case Circuit
Breaker Air Switch Plastic Case Leakage Protector
Switching Power Supply (Color : 1, Size :
ZYM1-125/2P 63A) Brand: MeLphi. Search this
page . \$66.72 \$ 66. 72. Size:



MCCB molded case circuit breaker for DC
applications: solar energy, UPS, Datacenters???
MCCB TD/TS 16-800A ??? Rated voltage up to
1000 VDC ??? Rated current: 16A ~ 800A, 40kA at
1000VDC ??? 2, 3 and 4 poles. MCCB TSD
63-250A ??? Rated voltage up to 1500 VDC ???
Nominal current: 63A ~ 250A, 50kA at 1000VDC
??? 4-pole. NEW MCCB TSD 40-550A (IEC/UL)

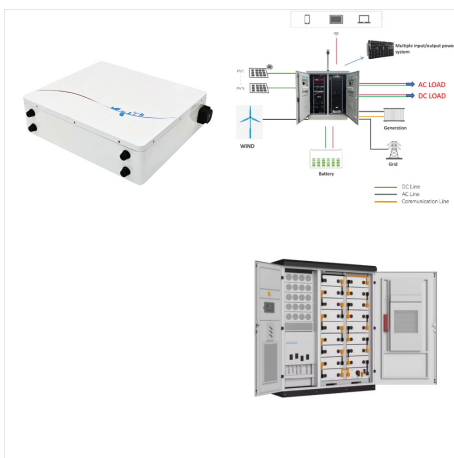
PHOTOVOLTAIC MOLDED CASE CIRCUIT BREAKER



Molded Case Circuit Breaker for Photovoltaic Sales Market Size and Forecast. Market Research Intellect Global Molded Case Circuit Breaker for Photovoltaic Sales Market research report provides in



Molded Case Circuit Breakers (MCCBs) are indispensable for ensuring the safety and reliability of electrical systems. Leading Manufacturer Protects Solar Power Safety. No. 399, Haiyang 1st Road, Pudong New Area, Shanghai, China +86-21-60250600. contact@onccy . Products. DC Isolator Switch DC Circuit Breaker Safety Switch Load ???



What is MCCB (Molded Case)? Types, Construction, Operation & Applications. Circuit breakers are electrical devices that offer protection against fault current. They use different medium to safely extinguish the arc such as air, oil, SF6 or vacuum etc. MCCB or Molded Case Circuit Breaker uses air as the dielectric medium to break a circuit. Air has a low dielectric strength as ???

PHOTOVOLTAIC MOLDED CASE CIRCUIT BREAKER



Heschen DC Molded Case Circuit Breaker MCCB, HSM1PV-250, 2 Poles, DC550V 200A, Photovoltaic Circuit Breaker, for Solar PV System Solar Panels Grid System: (Molded Case Circuit Breaker) con la funzione di interrompere immediatamente la corrente in un circuito in caso di anomalie. A differenza dei normali magnetotermici, l'MCCB garantisce



The Tmax PV range of molded-case circuit-breakers and switch-disconnectors for photovoltaic applications offers an increasingly comprehensive, leading-edge solution that anticipates the market trends. As a global leader in this area, ABB continues to update its range by proposing a series of products to UL and IEC Standards for protecting and



A molded case circuit breaker (MCCB) is a type of electrical protection device that is used to protect the electrical circuit from excessive current. These breakers are used instead of miniature circuit breakers (MCBs) in large scale PV systems for system isolation and protection purposes. ETEK Electric provides Thermal magnetic Fixed Type

PHOTOVOLTAIC MOLDED CASE CIRCUIT BREAKER



PV Molded Case Circuit Breakers (MCCBs) and Molded Case Switches (MCS) ??? Fully tested, met and exceeded to the requirements of UL 489B: operating at $1.35 \times I_n$ (1.35 times the nominal current) within 1 or 2 hours depending on amp rating (50A or less or over 50A respectively) and calibrated at 50°C ambient temperature.



What is MCCB (Molded Case)? Types, Construction, Operation & Applications. Circuit breakers are electrical devices that offer protection against fault current. They use different medium to safely extinguish the arc such as air, oil, SF6 or ???



PVGard molded case circuit breaker. Photovoltaic (PV) systems convert the energy of the sun into electrical power that is fed directly into the electric grid. Within the balance of system (BOS), direct current (DC) circuit breakers protect the wiring connected from the PV modules to the combiner or the inverter, while also behaving as a

PHOTOVOLTAIC MOLDED CASE CIRCUIT BREAKER



is contained in the Standard for Molded-Case Circuit Breakers, Molded-Case Switches, and Circuit Breaker Enclosures, UL 489. References to the National Electrical Code(R) (NEC (R)) are to the 2014 edition. Revisions to the 2008 edition of the NEC resulted in panelboards no longer being classified as



Buy 2P DC 600V DC Solar Molded Case Circuit Breaker, MCCB Overload Protection Switch Protector for Solar Photovoltaic PV (Size : 150A): Thermal-Magnetic Circuit Breakers - Amazon FREE DELIVERY possible on ???

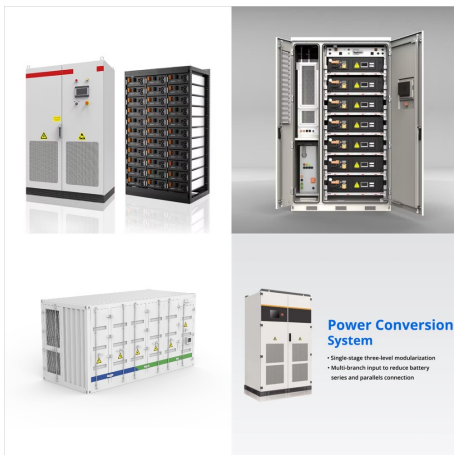


photovoltaic molded-case circuit breakers and molded- case switches ??? Designed to meet higher voltage and lower fault current levels of solar systems ??? 50 ?C calibrated ??? Tested to extreme ???

PHOTOVOLTAIC MOLDED CASE CIRCUIT BREAKER



Circuit-breakers, to protect lines up to 160 A
ComPact NSXm is the smallest size molded case
circuit breaker (MCCB) in the ComPact NSX range.
With its convenient design, it can easily
accommodate applications from 16 to 160 A.
Available with integrated earth leakage protection.



The Molded Case Circuit Breaker for Photovoltaic
Market research 2024-2031 provides analytical
information on current trends, drivers and market
restraints of top providers. Along with types [DC



This solar molded case circuit breaker provides
unparalleled overload protection, offering peace of
mind and reliability for your solar energy setup. The
Tomzn 2P DC MCCB TOM7Z is designed to last,
providing long-term protection for your solar power
system without compromising on safety or
efficiency. Efficient Switch Protector for Seamless

PHOTOVOLTAIC MOLDED CASE CIRCUIT BREAKER



The PowerPacT??? T- and U-frame DC PV range of molded case circuit breakers and switches with operational voltage up to 1000 Vdc include the protection components you need for the safety and operation efficiency of your ???



As installed system capacity continues to increase in the Australian PV market, it is valuable for system designers and installers to understand the mechanisms behind moulded case circuit breakers, and the meaning behind their ratings. A moulded case circuit breaker (MCCB) is a type of electrical protection device that is used to protect the electrical [???



Geya molded case circuit breaker with its rated insulation voltage of 1000V, is a perfect choice for distribution applications, especially for places with higher request for protections against overload, short circuit and under voltage, so as to maintain power supply reliability.

PHOTOVOLTAIC MOLDED CASE CIRCUIT BREAKER



Series C molded case circuit breaker. The Series C circuit breaker was originally introduced in the 1980's and is widely utilized in Eaton's panelboards, switchboards, motor control centers, and busway applications. Choose from a premier selection of trip units including thermal magnetic, electronic, and magnetic only switches.