



Pixii Power Shaper Flexible grid tied energy storage system 50kW up to 50kWh\* / 40kW up to 100kWh\*  
The PowerShaper from Pixii is a complete modular energy storage system\*\* designed for outdoor installation. It is fully integrated with PixiiBox inverters and batteries and ready to be connected to the grid for applications like



The Pixii Powershaper hybrid storage solution is unique on the market and allows a wide range of applications (optimization of self-consumption, anti-black-out, micro-grid, off-grid). Endowed with a unique modularity thanks to the unparalleled compactness (3 KG / 3.3 kVA) of the Pixiibox 48V bi-directional inverter-rectifiers, the latter are at



The Pixii PowerShaper2 is a modular battery energy storage system that scales to your needs. It comes with smart functionality like time shift and peak shaving to reduce your energy cost, and it's fully integrated, enabling you to get the most out of your new or existing solar panels.



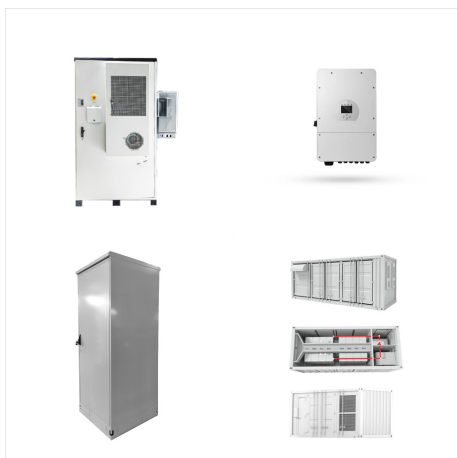
PowerShaper XL is achieved using the PixiiBox, a bidirectional 3,3kW AC/DC converter module. There is room for up to 18 PixiiBoxes in each cabinet. The system includes the Pixii Gateway controller providing advanced monitoring and control applications as well as communication and interoperability via the internet, wifi or the wireless network. For



Pixii PowerShaper2 är ett modulärt batterienergilagringssystem som kan anpassas efter dina behov. Den kommer med smarta funktioner som tidsförskjutning och peak shaving för att minska din energikostnad, och den är ???



The PowerShaper XL is an IP55 modular and scalable energy storage system designed for energy-oriented applications. It offers up to 60kW of power and 200kWh of LFP batteries, making it ideal for optimizing energy use through solar self-consumption, peak shaving, and demand charge reduction, saving operational costs in real time.



Pixii PowerShaper2 är ett modulärt batterienergilagringssystem som kan anpassas efter dina behov. Den kommer med smarta funktioner som tidsförskjutning och peak shaving för att minska din energikostnad, och den är helt integrerad, vilket gör att du kan få ut det mesta av dina nya eller befintliga solpaneler.



We've taken delivery of the next key component of our net zero project - The Pixii PowerShaper. This is impressive piece of kit is a modular and integrated energy storage system, scalable to the power and energy required for any given application.



The Pixii PowerShaper2 is a modular battery energy storage system that scales to your needs. It comes with smart functionality like time shift and peak shaving to reduce your energy cost, and it's fully integrated, enabling you to get the most out of your renewable energy sources.



The Pixii PowerShaper is a modular battery energy storage system that optimizes energy use, helping you avoid costly grid upgrades. It comes with smart functionality like time shift and peak shaving to reduce your energy cost by storing power during low-demand periods.