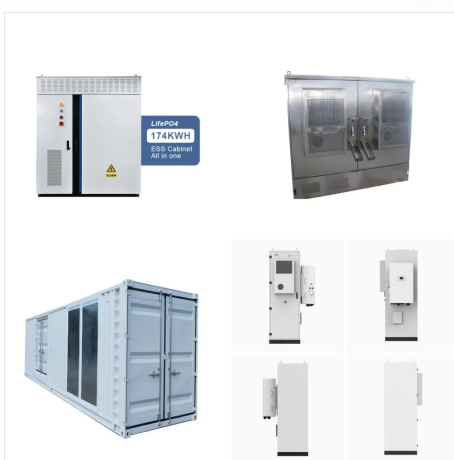




These areas of life are thoroughly described in the 8th place planet links above. Taylor Swift's birth chart Another example using Taylor Swift's birth chart . Can you say, revenge anthems? With the emotional moon and no-filters Jupiter in her 8th house, Taylor Swift's romantic encounters prove that hell hath no fury like a popstar



The solar system has eight planets: Mercury, Venus, Earth, Mars, Jupiter, Saturn, Uranus, and Neptune. There are five officially recognized dwarf planets in our solar system: Ceres, Pluto, Haumea, Makemake, and Eris. What is a Planet? a?|



Having a planet in your 8th house can influence how you handle trauma and fear, as well as how you approach transformation. For example, if you have Moon in the 8th house, you may be more sensitive and intuitive when dealing with difficult topics. The sign of the planet, as well as its aspects, can also help you understand how it influences



Is a planet alignment and a planet parade the same thing? "Planetary parade" is not an official astronomical term, so it is used more loosely than the term "planetary alignment." Planetary alignments are colloquially called planetary parades. Additionally, when multiple planets are visible together in one night, it can also be called a



Neptune is the eighth and farthest planet in our solar system. It is the fourth-largest planet and is similar to Uranus consisting of gases, ices, and has a series of moons and faint rings. Neptune was also the only planet whose presence was predicted using mathematics before it was observed visually through a telescope.



Neptune is the eighth and most distant planet from the Sun. It's the fourth largest, and the first planet discovered with math. NASA. Solar System Exploration Our Galactic Neighborhood. Planet X; Moons. About Moons; a?|



Moon in Eighth House 8. The Moon in the 8th House is an indication that in past lives the emotional needs of others were denied as a result of an overly self-centered, materialistic, or cerebral reality. The sign of the Moon will indicate which. People with the Moon in 8th House are commonly born to parents who cannot function at an emotional



Neptune is the fourth largest planet. It's about four times wider than Earth with an equatorial diameter of about 30,775 miles (49,528 kilometers). Neptune is the eighth, and the most distant planet from the Sun, orbiting at an average distance of a?



Neptune is the eighth and most distant planet from the Sun. It's the fourth largest, and the first planet discovered with math. NASA. Solar System Exploration Our Galactic Neighborhood. Planet X; Moons. About Moons; BY DESTINATION Earth (1) Mars (2) Jupiter (95) Saturn (83) Uranus (27) Neptune (14) Pluto (5)



Neptune is the eighth and most distant planet in our solar system. Explore Neptune. Dwarf Planets. Beyond Neptune, a newer class of smaller worlds called dwarf planets reign, including longtime favorite Pluto. The other dwarf planets a?|



Distance from the Sun: Neptune is the eighth planet from the Sun. It orbits at an average distance of 2.8 billion miles (4.5 billion km), thirty times farther than Earth.Orbit around the Sun:.. It



Our solar system now is tied for most number of planets around a single star, with the recent discovery of an eighth planet circling Kepler-90, a Sun-like star 2,545 light-years from Earth. The planet was discovered in data from NASA's Kepler Space Telescope.



Neptune is the eighth planet in our solar system and is known for its beautiful blue color. It was this color that was used to name it after the Roman god of the sea. The Greeks called their god of the sea, Poseidon. Neptune also has a diameter that makes it the 4th largest planet and it is third largest by mass.



Saturn in the 8th House leads to a strong sense of responsibility and discipline in managing shared resources and deep relationships. This placement can lead to maturity in handling life's serious aspects, like finances, inheritance, and intimacy. Saturn is a key planet in astrology, known as the planet of discipline and limitation. Its



. Neptune, third most massive planet of the solar system and the eighth and outermost planet from the Sun cause of its great distance from Earth, it cannot be seen with the unaided eye. With a small telescope, it appears as a tiny, faint blue-green disk is designated by the symbol ♆. Neptune is named for the Roman god of the sea, who is identified with the Greek god Poseidon.



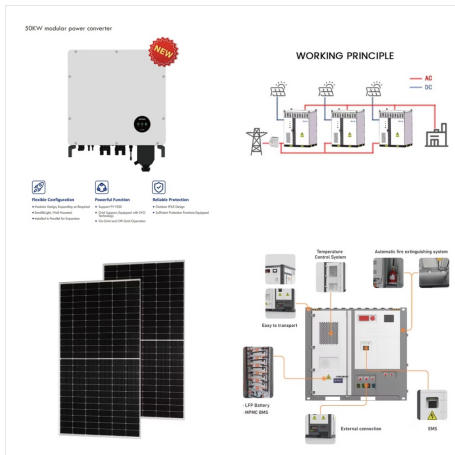
Environmental Science: Earth as a Living Planet, 8th Edition. Home. Browse by Chapter. Browse by Chapter. Browse by Resource. Browse by Resource. More Information. More Information. Title Home on Wiley . How to Use This Site. Table of Contents. Table Of Contents. Chapter 1: Key Themes In Environmental Science.



Unknown Birth Time If birth time is unknown, check this box.. Birth City. UTC time offset: Tip: Make sure the UTC time offset is correct. If it's wrong, you can change it. * NOTE: If birth time is unknown, the report will not include positions or aspects for the Moon, Ascendant, Midheaven, Vertex, or Part of Fortune, nor will it include House positions for any planets.



Dark, cold, and whipped by supersonic winds, ice giant Neptune is the eighth and most distant planet in our solar system. More than 30 times as far from the Sun as Earth, Neptune is the only planet in our solar system not visible to the naked eye. In 2011 Neptune completed its first 165-year orbit since its discovery in 1846.



Neptune, Eighth planet from the Sun, discovered in 1846 and named for the Roman god of the sea. It has an average distance from the Sun of 2.8 billion mi (4.5 billion km), taking nearly 164 years to complete one orbit and rotating every 16.11 hours. Neptune has more than 17 times Earth's mass, 58 times its volume, and 12% stronger gravity at



Planet 8ths is a dispensary located in Modesto, California. View Planet 8ths's marijuana menu, daily specials, reviews photos and more! Login Join Home Modesto Marijuana Dispensaries Planet 8ths Planet 8ths (2) dispensary (209) 596-8031 a?|



Neptune is the eighth and most distant planet from the Sun. That means Uranus is Neptune's only neighboring planet. Quick History. Neptune was discovered in 1846 by Urbain Le Verrier, John Couch Adams, and Johann Galle. Only Voyager 2 has visited Neptune. What does Neptune look like? Voyager 2 took this picture of Neptune in 1989.



PLANET FITNESS, 8524 SW 8th St, Miami, FL 33144, 90 Photos, Mon - 5:00 am - Tue, Tue - Open 24 hours, Wed - Open 24 hours, Thu - Open 24 hours, Fri - Thu - 9:00 pm, Sat - 7:00 am - 9:00 pm, Sun - 7:00 am - 9:00 pm Insight like this helps us continue creating a better experience for our members! Here at our Planet, we want our members to