



The closest planet to the Earth should be either the previous planet (Venus), or the following (Mars) Look up the mean radii of these planets orbits To find the average distance between Earth & Mars and Earth & Venus, subtract the smaller radius from the bigger one for each pair



Moon???Saturn Close Approach. The Moon will be close to Saturn in the evening sky around November 10???11. Show Saturn on our Night Sky Map (below). Play with our timeline to see the swings in the planets' distances from Earth. Moon Phase and Position. Find the Moon's illumination, distance, and latitude for any time on any date.



The closest planet to Earth means the planet that is at the closest distance from the Earth. Many scientists believe that the closest planet to Earth is Venus. Students can learn more about the closest planet to Earth here. Learn. CBSE. Class 5 to 12. Physics. Difference Between in Physics; Maths; Chemistry; Biology.



An exception is Gliese 667Cc which lies 22 light-years from Earth. It orbits a red dwarf star every 28 days and is at least 4.5 times as massive as Earth. "The close proximity of the planets around Wolf 1061 means there is a good chance these planets may pass across the face of ???



Although Venus is the planet that comes closest to Earth as it sweeps by on its orbit, Mercury stays the closest to Earth the longest, according to a commentary published Tuesday (March 12) in the



It turns out that Venus is, on average, 1.14 astronomical units (AU) from Earth, but Mercury is, on average, only 1.04 AU from Earth. An AU is a unit of length equal to the average distance ???



The qualities that make our planet Earth-like ??? its rockiness and mass among others ??? are important to researchers searching for other worlds like ours. NASA considers exoplanet Kepler-452b and its star to be the closest analog to our planet and Sun so far. Though it's 60% larger than Earth in diameter, Kepler-452b is thought to be



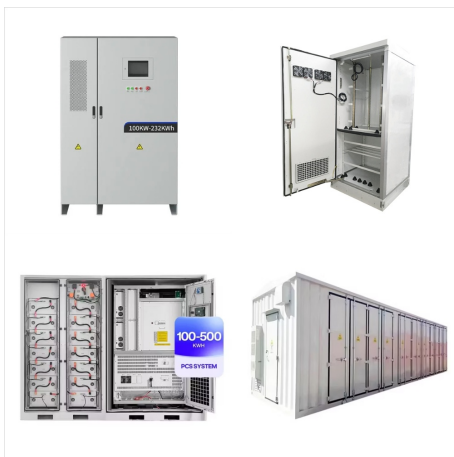
Earth. The third closest planet to the Sun. Earth is at an average distance of 150 million km / 93 million mi or 1 AU away from the Sun. It only has one moon and several other smaller satellites. Earth is the biggest terrestrial planet having a diameter of 12.760 km / 7.926 mi. Surface temperatures on Earth are around 14 degrees Celsius.



This is a relatively common shape among near-Earth asteroids larger than 660 feet (200 meters) in diameter ??? at least one in six have two lobes. On April 13, 2029, Apophis will pass less than 20,000 miles (32,000 kilometers) from our planet's surface ??? closer than the distance of geosynchronous satellites. During that 2029 close



This paradoxically makes Mercury the closest planet to Earth, a plurality of the time. Mercury was named after the Roman messenger god, because of its fast movements around the Sun. Mercury is the closest planet to the Sun at a distance of 57.91 million kilometers / 35.98 miles or 0.4 AU away. It takes sunlight 3.2 minutes to travel from the



Terrestrial planets include the four closest planets to the Sun located between the Sun and the asteroid belt; Mercury, Venus, Earth, and Mars. Astronomers who use the geophysical definition of a planet would also include the Moon as a terrestrial planet. Terrestrial planets are planets with a solid surface, often made up of rock or metals.

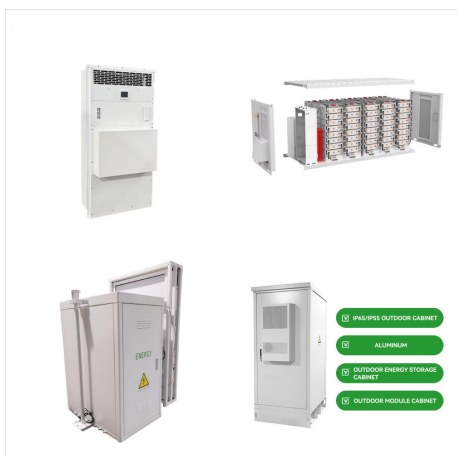


Because of where the planets are on these orbital paths, and specifically the time it takes Mercury to orbit the sun, Mercury is the planet that is closest to Earth more often and has an average distance to Earth that is lower than the other 2 inner planets. Mars is occasionally the closest as well, but on average much further than Mercury or





Which planet is closest to Earth in terms of distance? New findings show that considering the average distance, Mercury is the nearest planet to Earth; considering the smallest possible distance



Although the elliptical orbit of Venus is closest to Earth's own, that doesn't mean that Venus itself is always the closest planet to us. Sometimes it is, sometimes it isn't. Each planet takes a different length of time to orbit the Sun 1 and so sometimes Mars is quite close to us while Venus is far away, on the other side of the Sun.



The Earth is 93 million miles from the sun. The nearest planet to Earth is Venus, which orbits at a distance of 67 million miles and sometimes passes within 26 million miles of Earth. Venus is extremely hot because of its carbon-dioxide rich atmosphere and has been ruled out as a candidate for life.



Earth. The third closest planet to the Sun. Earth is at an average distance of 150 million km / 93 million mi or 1 AU away from the Sun. It only has one moon and several other smaller satellites. Earth is the biggest terrestrial ???



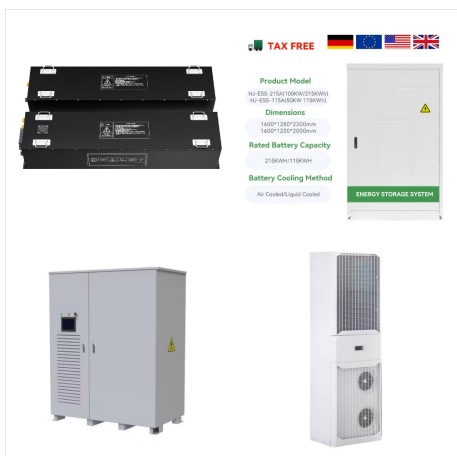
NASA's Kepler mission has confirmed the first near-Earth-size planet in the "habitable zone" around a sun-like star. This discovery and the introduction of 11 other new small habitable zone candidate planets mark another milestone in the journey to finding another "Earth."



This newly discovered exoplanet is in its star's habitable zone and is the closest to Earth in size and temperature found yet in Kepler's data. Either way, this system provides yet another example of an Earth-size planet in the habitable zone of a red dwarf star. These small and dim stars require planets to orbit extremely close to be



Mercury is the closest planet to the sun and the smallest planet in the solar system ??? it is only a little larger than Earth's moon. Mercury zips around the sun in only 88 days and because it is



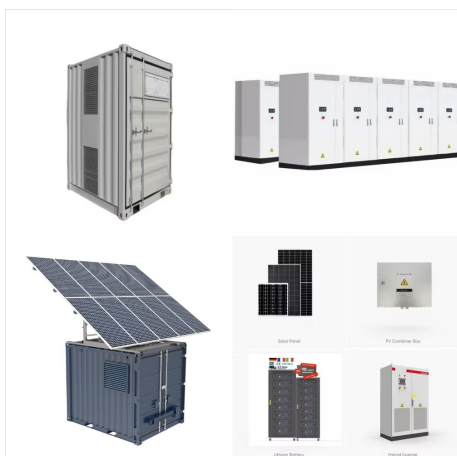
How to Use the Planet Chart. Using the four buttons at the top, select either Distance from the Sun, Distance from the Earth, Size in the Sky, or Brightness to control how the planets are displayed.; Press the Play button at the bottom of the chart to make time move in fast forward mode. You can also move backward and forwards in time by sliding the hand cursor along the ???



Because the planet is so close to the Sun, day temperatures can reach highs of 800°F (430°C). Without an atmosphere to retain that heat at night, temperatures can dip as low as -290°F (-180°C). Mercury is the second densest planet, after Earth. It has a large metallic core with a radius of about 1,289 miles (2,074 kilometers), about 85%



The elliptical orbit causes Mercury to get as close to the sun as 29-million miles and as far as 43-million miles. To put this into scale, Mercury is on average 0.387 AU from the sun. This means that Mercury is approximately a third of the way between the sun and Earth. Venus is the second planet from the sun and the closest planet to Earth



So be aware that just because the app may occasionally show a planet and a dwarf planet to be very close to each other in the plan view, they may, in fact, be separated by a large perpendicular distance. Earth's Tilt. The positions of the all planets (including the Earth) are shown with respect to the stars and so are unaffected by



Sometimes, Mars is the closest planet to Earth. The closest that Mars comes to Earth in its orbit is 33.9 million miles away from it. In order to get an answer that is not subject to change, we must look at what planet is closest to the Earth on average. When we calculate this, we find that Mercury actually spends the most time close to the Earth.



Asking which planet is the closest to Earth is actually something of a trick question ??? the closest planet to Earth can change depending on the day, month, or even year. Rather than stating a time frame to describe when a given planet will be closest to our own planet, it is actually most accurate to describe a position that would indicate

Venus is the second planet from the Sun, and Earth's closest planetary neighbor. Venus is the third brightest object in the sky after the Sun and Moon. Venus spins slowly in the opposite direction from most planets. Venus is similar in structure and size to Earth, and is sometimes called Earth's evil twin. Its thick atmosphere traps heat in a

Venus is the second planet from the Sun, and Earth's closest planetary neighbor. Venus is the third brightest object in the sky after the Sun and Moon. Venus spins slowly in the opposite direction from most planets. Venus is similar in structure ???