



Which planets will be visible on November 17 & 20?

On November 17, the 98%-illuminated Moon and Jupiter (mag -2.8) will meet in the constellation Taurus. The planet will rise in the evening and will be visible to the naked eye. On November 20, the 77%-illuminated Moon and Mars (mag 0.2) will meet in the constellation Cancer. The planet will rise in the evening and will be visible to the naked eye.

Where can I find a full moon on October 20th?

On the 13th and 14th after dark, look for the nearly full Moon with Saturn toward the southeast. Then on the evening of October 20th, the Moon rises near Jupiter, with the giant planet looking extremely bright. You should be able to find them low in the east after around 10 pm that night.

Will Uranus & the full moon meet on November 15?

On November 15, the Full Moon and Uranus (mag 5.7) will meet in the constellation Taurus. The bright Pleiades star cluster will also shine nearby. The planet will appear in the sky in the evening. Note that Uranus is rather faint to be observed without any optical aid, so it's best to bring a pair of binoculars.

Which planets are currently visible?

See which planets are currently visible, along with their rise and set times, to help you plan your observations. Jupiter presents a captivating view with its prominent cloud bands, the iconic Great Red Spot, and up to four of its largest moons: Io, Europa, Ganymede, and Callisto.

How do I view planets and stars near our natural satellite?

To view the planets and stars near our natural satellite, choose a cloudless night and use Star Walk 2 or Sky Tonight to learn when the celestial objects are best placed for your location. For a visual explanation, watch our recently released video on how to identify bright objects near the Moon using the Sky Tonight app, step by step.

When is the best time to see the Moon?

The first week and a half (Oct. 14-24) is the best time to observe, using binoculars or a small telescope. October 13-14 - After dark both nights, look for the nearly full Moon with Saturn toward the southeast. October

PLANET NEXT TO THE MOON RIGHT NOW



20 - The Moon rises near Jupiter, with the giant planet looking extremely bright.



Discover celestial objects visible tonight from your current location. Our guide automatically shows planets, stars, nebulae, and spacecraft flyovers you can see right now. Explore the night sky ???



The Moon and planets have been enlarged slightly for clarity. On mobile devices, tap to steer the map by pointing your device at the sky. Who's Closest Right Now? Play with our timeline to see the swings in the planets' distances from Earth. Moon Phase and Position. Find the Moon's illumination, distance, and latitude for any time on



Jupiter is currently at magnitude -2.48 and is gradually getting brighter as we head into the autumn, reaching -2.76 by 27 October, before reaching opposition on 2-3 November. How can ???

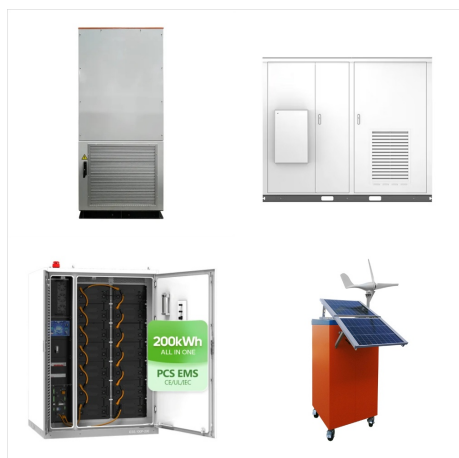
PLANET NEXT TO THE MOON RIGHT NOW



The interactive sky chart offers a lot in the way of customizing what you want to see. Chart the stars and planets visible to the unaided eye from any location, at any time of day or night, on any date between the years 1600 to 2400 by entering your location, either via zip code, city, or latitude/longitude.

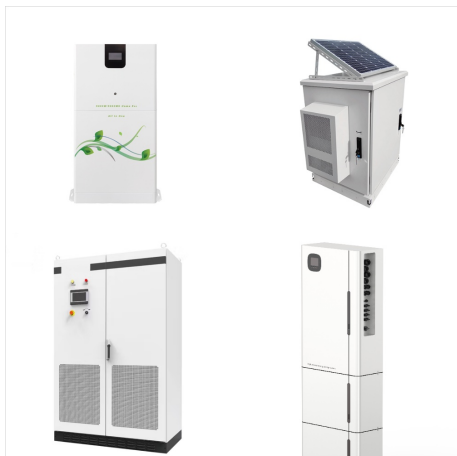


The Moon and planets have been enlarged slightly for clarity. On mobile devices, tap to steer the map by pointing your device at the sky. Who's Closest Right Now? Play with our timeline to see the swings in the planets' distances from Earth. Moon Phase and Position. Find the Moon's illumination, distance, and latitude for any time on



The positions of the planets, moons and spacecraft are shown where they are right now. Credit: NASA/JPL-Caltech. This simulated view of our solar system runs on real data. The positions of the planets, moons and spacecraft are shown where they are right now. The Moon; Mars; Jupiter; Saturn; Uranus; Neptune; Pluto & Dwarf Planets

PLANET NEXT TO THE MOON RIGHT NOW



On Nov. 10, that bright yellowish-white "star" shining closely to the moon's upper right during the mid/late evening hours will be the ringed planet. Joe Rao serves as an instructor and guest



What is the planet next to the moon right now? According to Star Walk, from Jan. 8-14, the planets that are visible next to the moon are Mercury, Venus, Saturn and Jupiter. When is the first full



The Moon and planets have been enlarged slightly for clarity. On mobile devices, tap to steer the map by pointing your device at the sky. Who's Closest Right Now? Play with our timeline to see the swings in the planets' distances from Earth. Moon Phase and Position. Find the Moon's illumination, distance, and latitude for any time on

PLANET NEXT TO THE MOON RIGHT NOW



The planets today shows you where the planets are now as a live display - a free online orrery. In this solar system map you can see the planetary positions from 3000 BCE to 3000 CE, and also see when each planet is in retrograde.



Mercury reaches the greatest separation from the Sun in the evening sky on January 7, 2022, so the nights around this date are the best for viewing the planet. January 4: Moon-Saturn conjunction. On the same day, January 4, 2022, at 16:50 GMT (11:50 a.m. EST), the conjunction of the young Moon and the ringed planet Saturn (0.6) will occur.

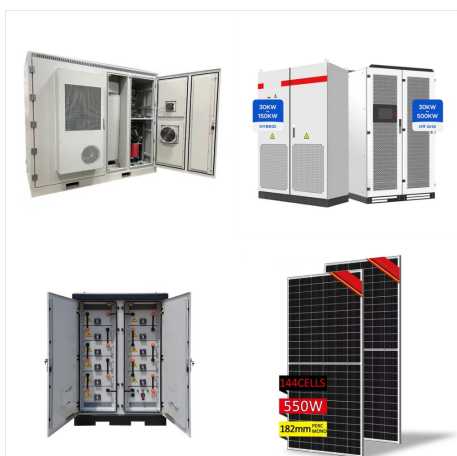


The Moon and planets have been enlarged slightly for clarity. On mobile devices, Who's Closest Right Now? Play with our timeline to see the swings in the planets' distances from Earth. Moon Phase and Position. Find the Moon's illumination, distance, and ???

PLANET NEXT TO THE MOON RIGHT NOW



The Moon and planets have been enlarged slightly for clarity. On mobile devices, tap to steer the map by pointing your device at the sky. Who's Closest Right Now? Play with our timeline to see the swings in the planets' distances from Earth. Moon Phase and Position. Find the Moon's illumination, distance, and latitude for any time on



For a moon to stay in orbit, it would have to be reasonably close to a planet. Because of this, out of curiosity, you may ask yourself, What planet is closest to the moon right now? There are only a few planets close to the moon right now. Mercury, Venus, Earth. And they are the only planets that can be seen with the naked eye.



The Moon and planets have been enlarged slightly for clarity. On mobile devices, tap to steer the map by pointing your device at the sky. Who's Closest Right Now? Play with our timeline to see the swings in the planets' distances from Earth. Moon Phase and Position. Find the Moon's illumination, distance, and latitude for any time on

PLANET NEXT TO THE MOON RIGHT NOW



? Tips to identify planets in the night sky. Like all the celestial objects, planets rise in the east and set in the west. Here are a few tips to identify planets in the night sky: Tip 1: Planets are not visible anywhere in the sky. They are visible along the ecliptic.



The Moon tonight is in Waxing Crescent phase in the constellation of Capricornus, at a distance of 382,080.0 kilometers from Earth. The current Right Ascension is 20h 24m 45s and the Declination is -24° 25' 31" (apparent coordinates). The magnitude of The Moon is -9.62 (data provided by JPL Horizons).. This image accurately depicts the Moon's current appearance, highlighting the key



This skymap is a dynamic visualization that displays the positions of planets within the constellation boundaries for your specific location on the current date. Interactively explore the celestial landscape by panning horizontally to see how the arrangement of planets changes throughout the night.

PLANET NEXT TO THE MOON RIGHT NOW



The Moon and planets have been enlarged slightly for clarity. On mobile devices, Who's Closest Right Now? Play with our timeline to see the swings in the planets' distances from Earth. Moon Phase and Position. Find the Moon's illumination, distance, and ???

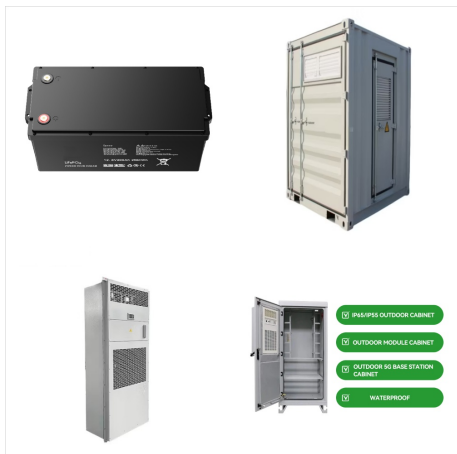


? All the Moon phases in order. There are eight traditionally recognized Moon phases. The four major phases are the Full Moon, New Moon, First Quarter, and Last Quarter between, there are four minor ones: the Waxing Crescent, Waxing Gibbous, Waning Gibbous, and Waning Crescent. The major Moon phases mark specific moments, while the minor phases span about ???



The Moon and planets have been enlarged slightly for clarity. On mobile devices, tap to steer the map by pointing your device at the sky. Who's Closest Right Now? Play with our timeline to see the swings in the planets' distances from Earth. Moon Phase and Position. Find the Moon's illumination, distance, and latitude for any time on

PLANET NEXT TO THE MOON RIGHT NOW



The Moon and planets have been enlarged slightly for clarity. On mobile devices, tap to steer the map by pointing your device at the sky. Who's Closest Right Now? Play with our timeline to see the swings in the planets' distances from Earth. Moon Phase and Position. Find the Moon's illumination, distance, and latitude for any time on



Which planets are visible tonight? What planet can I see tonight? Our Visible Planets Calculator displays the rise and set times of the planets each night, their location in the sky, and how illuminated they will be. More Astronomy Tools: Sunrise and Sunset Calculator; Moonrise and Moonset Calculator; Bright Stars Calculator



December 3-5: Venus and the Moon. Look southwest from just before sunset (until about two hours after sunset). On December 3, the Moon will be below and to the right of Venus. On December 4, the Moon will be hanging directly under Venus. By December 5, the Moon will be to the upper left of Venus. December 14: Jupiter and the Moon.

PLANET NEXT TO THE MOON RIGHT NOW



The Moon and planets have been enlarged slightly for clarity. On mobile devices, tap to steer the map by pointing your device at the sky. Who's Closest Right Now? Play with our timeline to see the swings in the planets' distances from Earth. Moon Phase and Position. Find the Moon's illumination, distance, and latitude for any time on



Tonight's Sky in Southern California, Oct 24 ??? Oct 25, 2024. Fairly close to the Sun. Visible only after sunset. Mercury is just 15 degrees from the Sun in the sky, so it is difficult to see. Venus ???