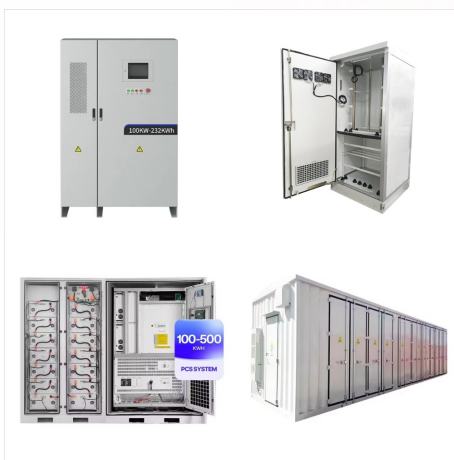




planet viewer. mercury. venus. earth. mars. jupiter. saturn. uranus. neptune. 01 overview 02 internal structure 03 surface geology (3D) mars. Mars is the fourth planet from the Sun and the second-smallest planet in the Solar System, being larger than only Mercury. In English, Mars carries the name of the Roman god of war and is often referred



Search and find a place on Street View Page 1 Page 2 Page 3. Dcerrestrial globe. A model globe of Earth is called a terrestrial globe. The earth's surface is reflected in the rules of central projection. Namely, imagine two identical spheres with a common center, one of which is a larger earth, and the sphere taken is smaller. The points are



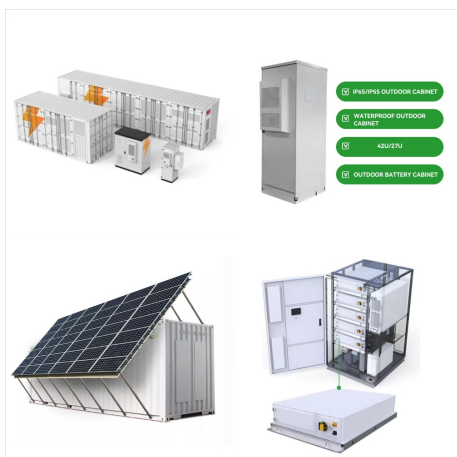
View after sunset. Venus can best be seen in the hours just after sunset. Visibility improves as the sunlight fades. Venus is visible by day, but may be hard to find. Thu, Nov 7 a??7:21 pm. Planet Sizes and Order. With surface gravity, moons, current phase, type, and more.



planet viewer. mercury. venus. earth. mars. jupiter. saturn. uranus. neptune. 01 overview 02 internal structure 03 surface geology (3D) mercury. Mercury is the smallest planet in the Solar System and the closest to the Sun. Its orbit around the Sun takes 87.97 Earth days, the shortest of all the Sun's planets. Mercury is one of four terrestrial



RPS 3D Viewer Featured Resources Supermoon Lunar Eclipse (2015) Video: Apollo Landing Sites Venus: The Mysterious Planet Planet X; Moons. About Moons; BY DESTINATION Earth (1) Mars (2) Jupiter (95) Saturn (83) Uranus (27) Neptune (14) Pluto (5) Asteroids, Comets & Meteors.



Discover Planet Coaster 2's control schemes, including handy shortcuts, with an overview of all the controls you'll need on gamepad or mouse and keyboard. Open Menu. Home; News. Camera View Modes. Camera Tilt / Rotate. Hide Panels Tab. Visitor Camera Mode. Enter Visitor Camera Placement Mode T. Choose Starting Location. Pan Camera Forwards W.



Dwarf planet Ceres is the largest object in the asteroid belt between Mars and Jupiter, and it's the only dwarf planet located in the inner solar system. Explore Ceres. Pluto Facts. Pluto was long considered our solar system's ninth planet. But it was reclassified as a dwarf planet in 2006 by the International Astronomical Union.



Powered by Heavens Above, our interactive viewer charts the night sky as seen by eye. The map includes the Moon, stars brighter than magnitude 5, the five bright planets (Mercury, Venus, Mars, Jupiter, and Saturn), and deep-sky objects that can be seen without the use of optical aid.



Deutsch. AstroViewer. Your night sky map on the internet. Night Sky; AstroViewer 3.1.6; Find planets and constellations in the night sky. AstroViewer is an interactive sky map that helps you to find your way in the night sky quickly and easily.. Just set your location and time and start exploring the starry sky, find planets and constellations, and much more. Sky over



Planet Viewer. When you request a synchronized transcript and video, we synchronize your transcript word for word with the video, put the entire day's proceedings on one DVD and deliver it via the Planet Viewer, a stand-alone player. Simply insert the DVD into your desktop or laptop computer and the transcript and video appear side by side.



Antenna Pattern Viewer (Planet Format) RF calculators and converters. This Viewer displays the azimuth (horizontal) and elevation (vertical) patterns in either polar or rectangular format. It can overlay multiple sectors and/or multiple frequency plots for single or multiple models.



When zoomed in extremely close to a planet or moon, it may appear slightly off its orbit path. This is due to the fact that the orbit path is approximated using a series of straight-line segments. View Selection. The default view is an oblique perspective of the ecliptic plane. You can select a pre-defined view from the "Look from:" menu.





Real-time Screenshots Seen on PLANET ONVIF Cameras. PLANET CloudViewer supports screenshots of PLANET ONVIF cameras. When a PLANET ONVIF camera is connected to a supported switch, user can preview a snapshot from camera on the App. It realizes real-time monitoring and help administrator to understand on-site statuses immediately.



planet viewer. mercury. venus. earth. mars. jupiter. saturn. uranus. neptune. 01 overview 02 internal structure 03 surface geology (3D) neptune. Neptune is the eighth and farthest-known Solar planet from the Sun. In the Solar System, it is the fourth-largest planet by diameter, the third-most-massive planet, and the densest giant planet. It is



The planets today shows you where the planets are now as a live display - a free online orrery. In this solar system map you can see the planetary positions from 3000 BCE to 3000 CE, and also see when each planet is in retrograde.



However, by assuming that eccentricity is 0 (the orbit of the planet is a perfect circle), the true anomaly becomes the mean anomaly (M). Users who don't see the three inner planets can disable the shaders to view those planets. Reducing the height of the Help panel slightly so that it fits better for some users who can't see the entire panel.



This browser/GPU combination has a limited bitmap size which is used to render planet/object labels. If the small body makes a close approach to the Earth or a planet, its position as shown in this viewer may become inaccurate. You are especially cautioned against using this viewer to make predictions of the small body's position a long



Interactively discover the red planet using the ArcGIS Maps SDK for JavaScript. Have you always dreamt of being an astronaut? Come close by exploring Mars, with this 3D globe app that displays canyons, mountains & craters along with the location of previous missions! Interactively discover the red planet using the ArcGIS Maps SDK for JavaScript



Here's a fun fact, Venus is the only planet in our solar system that spins opposite to Earth. Then we arrive at the piece de resistance: our bloodline, the Sun. During the visit, you could learn more about its billion-year lifespan and its constant solar storms. The solar system tour would not be complete without a stopover at Mars.



The reason is that the app has a slider control which changes the orbits of the planets from a diagrammatical view (i.e. all the planets in nice neat, equally separated, circular orbits) to a real view (i.e. all the planets in elliptical orbits with all the inner planets squashed in next to the Sun and the outer planets being widely spaced).



Field of View (choose one) I want a field of view of 120 90 60 45 30 20 10 5 2 1 0.5 0.2 0.1 0.05 0.02 0.01 0.005 0.002 0.001 0.0005 0.0002 0.0001 degree(s) I want the body to take up 100 90 80 70 60 50 40 30 20 10 5 2 1 percent of the image width



This tool shows approximate orbits of the planets and major planetary satellites. Optionally, one or more user-selected small body (asteroids and comets) orbit may also be shown. For help using this tool, select the Help item under the menu icon (below).; To display planetary satellites of a specific planet, select the Settings item under the menu icon (below), then select the Moons a?|