

Which planets are currently visible?

See which planets are currently visible, along with their rise and set times, to help you plan your observations. Jupiter presents a captivating view with its prominent cloud bands, the iconic Great Red Spot, and up to four of its largest moons: Io, Europa, Ganymede, and Callisto.

Where can I see the Moon on October 28 & 29?

To see a precise view - and time - from your location, try Stellarium Online. Chart via EarthSky. On the mornings of October 28 and 29, the thin waning crescent moon hangs above the eastern horizon near Denebola, the end star of the tail of Leo or Lion. The dark portion of the moon will be glowing with earthshine.

When will a waning gibbous moon move closer to Jupiter?

Soon after sunset on October 18 and 19, 2024, the waning gibbous moon will move closer to the bright planet Jupiter. The Pleiades star cluster will shine nearby and will be closest to the moon on October 19. Plus the fiery orange star Aldebaran, the Eye of Taurus the Bull, will shine near Jupiter. They'll be visible through dawn.

What time does a full moon come out?

Tonight sees it reach first quarter, which marks the halfway point between a new and full moon. Rising around midday and setting around midnight, the moon will be precisely 50% illuminated -- as seen from Earth-- at 2:06 a.m. EDT (0606 GMT). That's because it's at a 90-degree angle from the sun, so only its eastern side will receive sunlight.

When will the Moon occult Saturn?

A preview of the moon and Venus for the coming months The bright waxing gibbous moon will hang near Saturn in the east after sunset on the evenings of October 13 and 14, 2024. Observers visible from Asia and Africa will see the moon occult Saturn at 18 UTC on October 14.

When is the best time to see Venus & Mars?

Venus can best be seen in the hours just after sunset. Visibility improves as the sunlight fades. Venus is visible by day, but may be hard to find. Mars can best be seen in the hours just before sunrise. Visibility deteriorates as the sky gets brighter. Jupiter can be seen for more than 9 hours during the late night/early morning and until sunrise.



The circle shows the Moon's anticipated path in the upcoming weeks, including the next 3 or 4 Moon phases. As the Moon's position varies from one revolution to the next, the arrow indicating the expected lunar path may not point exactly towards the Moon's current position.



Our Interactive Night Sky Map simulates the sky above London. The Moon and planets have been enlarged slightly for clarity. The Moon and planets have been enlarged slightly for clarity. On mobile devices, tap to steer the map by pointing your device at the sky.



Tonight's Conjunctions. List of the closest conjunctions happening tonight between objects we are currently tracking, in order of increasing separation. The green arrow indicates that the objects are currently getting closer, while the red arrow means that ???



Negative numbers indicate that the planet is very easy to spot in the night sky, even with ambient light. The planets also have phases, like the Moon, but these are not indicated in this chart. The two planets which are closer to the Sun than Earth, Mercury and Venus, have the most easily visible planetary phases, but you need a telescope to



Our Interactive Night Sky Map simulates the sky above Raleigh. The Moon and planets have been enlarged slightly for clarity. The Moon and planets have been enlarged slightly for clarity. On mobile devices, tap to steer the map by pointing your device at the sky.



The Moon and planets have been enlarged slightly for clarity. On mobile devices, tap to steer the map by pointing your device at the sky. For planet visibility in the coming night, please check again after 12 noon. Tonight's Sky in North East, Nov 5
??? Nov 6, 2024



Our Interactive Night Sky Map simulates the sky above San Francisco. The Moon and planets have been enlarged slightly for clarity. The Moon and planets have been enlarged slightly for clarity. On mobile devices, tap to steer the map by pointing your device at the sky.



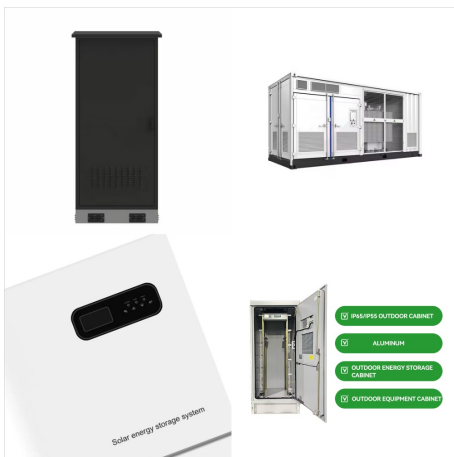
? Since the lunar cycle from New Moon to New Moon lasts 29.5 days, the 29-day-old Moon is the Moon one day before the New Moon. When will the Moon be visible tonight? The free astronomy app Sky Tonight can help you ???



Our Interactive Night Sky Map simulates the sky above Great Britain. The Moon and planets have been enlarged slightly for clarity. The Moon and planets have been enlarged slightly for clarity. On mobile devices, tap to steer the map by pointing your device at the sky.



Find out what you can see in the night sky for tonight, from planets and stars to dazzling meteor showers. Night sky tonight! Next Full Moon; Best Binoculars; Best Star Projectors;



Our Interactive Night Sky Map simulates the sky above Oklahoma City. The Moon and planets have been enlarged slightly for clarity. The Moon and planets have been enlarged slightly for clarity. On mobile devices, tap to steer the map by pointing your device at the sky.



So, the moon had to travel that much more across the sky to catch up to Venus. Since the Moon appears to move across the sky at roughly 13-degrees per day, it needs three more days (13 x 3 = 39)



Discover celestial objects visible tonight from your current location. Our guide automatically shows planets, stars, nebulae, and spacecraft flyovers you can see right now. Explore the night sky ???



The Moon phase for today is a Waning Crescent phase. This is the phase where the moon is less than 50% illuminated but has not yet reached 0% illumination (which would be a New Moon). In this part of the moon cycle, it is getting closer and closer to the Sun as viewed from Earth and the night side of the Moon is facing earth with a decreasingly thin crescent being illuminated.



Our Interactive Night Sky Map simulates the sky above Boston. The Moon and planets have been enlarged slightly for clarity. The Moon and planets have been enlarged slightly for clarity. On mobile devices, tap to steer the map by pointing your device at the sky.



The Moon's current phase for today and tonight is a Waxing Crescent Phase. Best seen in the west after the sun dips below the horizon at sunset. This is the first Phase after the New Moon and is a great time to see the features of the moon's surface. The moon is close to the sun in the sky and mostly dark except for the right edge of the moon



Moon Phase for Saturday Nov 9th, 2024 . The current moon phase for today is the First Quarter phase. On this day, the moon is 7.85 days old and 53.44% illuminated with a tilt of 105.834°. The approximate distance from Earth to the moon is 375,332.05 km and the moon sign is Aquarius.



Our Interactive Night Sky Map simulates the sky above Dallas. The Moon and planets have been enlarged slightly for clarity. The Moon and planets have been enlarged slightly for clarity. On mobile devices, tap to steer the map by pointing your device at the sky.



Tonight's Conjunctions. List of the closest conjunctions happening tonight between objects we are currently tracking, in order of increasing separation. The green arrow indicates that the objects are currently getting closer, while the red arrow means that ???