



Our Interactive Night Sky Map simulates the sky above Tokyo. The Moon and planets have been enlarged slightly for clarity. The Moon and planets have been enlarged slightly for clarity. On mobile devices, tap to steer the map by pointing your device at the sky.



The ZHR value refers to the Zenithal Hourly Rate, i.e. the average number of meteors an individual observer could see in an hour, assuming perfectly dark sky conditions. This number is an estimate, the number an observer could see in real conditions depends on the actual intensity of the shower (which can be highly variable) and on the sky conditions.



Our Interactive Night Sky Map simulates the sky above Great Britain. The Moon and planets have been enlarged slightly for clarity. The Moon and planets have been enlarged slightly for clarity. On mobile devices, tap to steer the map by pointing your device at the sky.



Our Interactive Night Sky Map simulates the sky above Chicago. The Moon and planets have been enlarged slightly for clarity. The Moon and planets have been enlarged slightly for clarity. On mobile devices, tap to steer the map by pointing your device at the sky.



Please set your location so we can show precisely what's visible in your night sky. Without your location, we will use Greenwich as a default, but visibility information and star map automatic orientation might be off. List of the closest conjunctions happening tonight between objects we are currently tracking, in order of increasing



Our Interactive Night Sky Map simulates the sky above Nashville. The Moon and planets have been enlarged slightly for clarity. The Moon and planets have been enlarged slightly for clarity. On mobile devices, tap to steer the map by pointing your device at the sky.



Our Interactive Night Sky Map simulates the sky above London. The Moon and planets have been enlarged slightly for clarity. The Moon and planets have been enlarged slightly for clarity. On mobile devices, tap to steer the map by pointing your device at the sky.



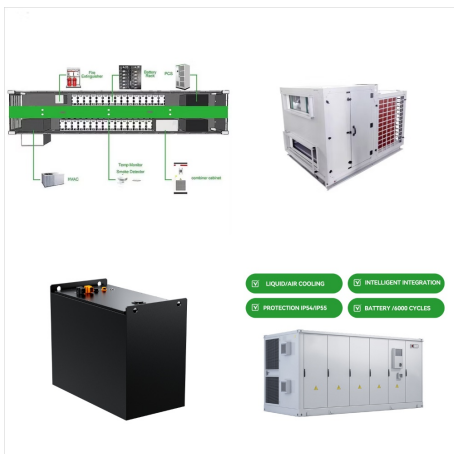
It's setting by the time the sky is fully dark. Saturn is visible toward the southeast as soon as it gets dark out, and sets by dawn. Mars rises around midnight all month. By dawn it has climbed quite high into the south-southeastern sky, appearing together with Jupiter. Now, Jupiter is rising in the first half of the night.



An online interactive planetarium application to explore the night sky and find constellations, planets, asteroids and other celestial objects visible from any location. Share this Planetarium View You can share the current view of the sky, including all the added objects, camera direction and field of view. Tonight Timeline. Moon



Discover celestial objects visible tonight from your current location. Our guide automatically shows planets, stars, nebulae, and spacecraft flyovers you can see right now. Explore the night sky with up-to-date data specific to where you are!



This means we see the planets at different times each year. Astronomers use their knowledge of the movements of planets to predict where and when they will be visible in the night sky. The "Horizon View" pictures show maps of the night sky for each of the compass points: north, east, south, west. Make sure to note down which map the planet



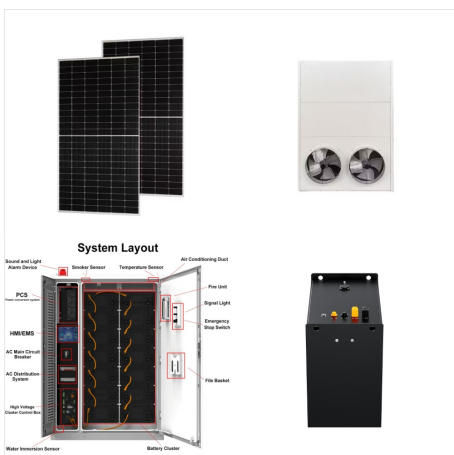
Our Interactive Night Sky Map simulates the sky above Honolulu. The Moon and planets have been enlarged slightly for clarity. The Moon and planets have been enlarged slightly for clarity. On mobile devices, tap to steer the map by pointing your device at the sky.



Discover celestial objects visible tonight from your current location. Our guide automatically shows planets, stars, nebulae, and spacecraft flyovers you can see right now. Explore the night sky ???



Our Interactive Night Sky Map simulates the sky above New Jersey. The Moon and planets have been enlarged slightly for clarity. The Moon and planets have been enlarged slightly for clarity. On mobile devices, tap to steer the map by pointing your device at the sky.



All Sky Chart. This all sky chart shows the sky above your location and is updated in realtime. Please note that this map does not reflect the actual lighting conditions and it shows the main astronomical objects even during daylight. Stars up to magnitude 5 and Solar System objects brighter than magnitude 10 are shown in the chart.





Navigate the night sky. Download a sky map for the current month. Spot the Station. Choose your state, then city to see when the International Space Station can be seen crossing the sky. Bookmark this page as your one ???



All-sky charts of the night sky from In-The-Sky , showing what stars and planets you'll be able to see in the night sky on any given day of the year. In-The-Sky . Guides to the night sky. Location: Virginia Beach (36.85°N; 75.98°W) Charts of the Night Sky



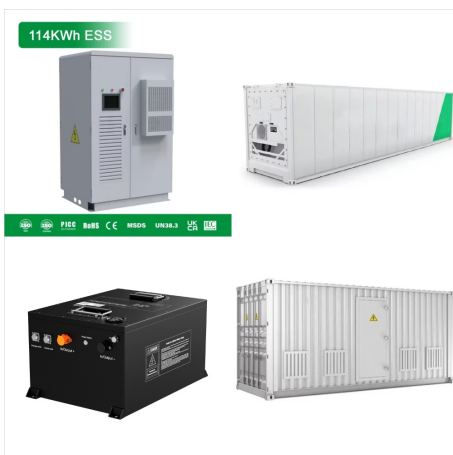
? Here are a few tips to identify planets in the night sky: Tip 1: Planets are not visible anywhere in the sky. They are visible along the ecliptic. The ecliptic is the path of the sun across the sky. So notice carefully where the sun rises, along which path it moves during the day and where it sets. Planets are visible along this path at night



Our Interactive Night Sky Map simulates the sky above Sydney. The Moon and planets have been enlarged slightly for clarity. The Moon and planets have been enlarged slightly for clarity. On mobile devices, tap to steer the map by pointing your device at the sky.



See this week's sky at a glance with observing tips and maps to guide you to the night sky. Don't miss out on comets, meteors, eclipses, and more! check out Sky at a Glance to find out what's happening in tonight's sky. MENU. This Week's Sky a strict policy of editorial independence from the AAS and its research publications in



Navigate the night sky. Download a sky map for the current month. Spot the Station. Choose your state, then city to see when the International Space Station can be seen crossing the sky. Bookmark this page as your one-stop planning resource for astronomy events. Note: By clicking any of these links, you will be leaving the NASA domain.



Our Interactive Night Sky Map simulates the sky above Toronto. The Moon and planets have been enlarged slightly for clarity. The Moon and planets have been enlarged slightly for clarity. On mobile devices, tap to steer the map by pointing your device at the sky.



A resource to help you plan tonight's observation of astronomical events and Solar System objects visible from Cleveland, United States. Please set your location so we can show precisely what's visible in your night sky. Without your location, we will use Greenwich as a default, but visibility information and star map automatic orientation