

Which planets orbit the Sun?

Planets and other objects in our Solar System. Credit: NASA. First the quick facts: Our Solar System has eight "official" planets which orbit the Sun. Here are the planets listed in order of their distance from the Sun: Mercury, Venus, Earth, Mars, Jupiter, Saturn, Uranus, and Neptune.

Which planets are based on their distance from the Sun?

The planets in order from the Sun based on their distance are Mercury, Venus, Earth, Mars, Jupiter, Saturn, Uranus, and Neptune. The planets of our Solar System are listed based on their distance from the Sun. There are, of course, the dwarf planets Ceres, Pluto, Haumea, Makemake, and Eris; however, they are in a different class.

Which planet is closer to the Sun than Earth?

Venus is about 26 million miles (42 million kilometers) closer to the Sun than Earth. Mars, the red planet, is the seventh largest planet in our solar system. Mars is about half the width of Earth, and has an equatorial diameter of about 4,221 miles (6,792 kilometers).

What are the four closest planets to the Sun?

Terrestrial planets include the four closest planets to the Sun located between the Sun and the asteroid belt; Mercury, Venus, Earth, and Mars. Astronomers who use the geophysical definition of a planet would also include the Moon as a terrestrial planet. Terrestrial planets are planets with a solid surface, often made up of rock or metals.

How many planets orbit the Sun?

First the quick facts: Our Solar System has eight "official" planets which orbit the Sun. Here are the planets listed in order of their distance from the Sun: Mercury, Venus, Earth, Mars, Jupiter, Saturn, Uranus, and Neptune. An easy mnemonic for remembering the order is "My Very Educated Mother Just Served Us Noodles."

How many planets are in our Solar System?

In our Solar System, there are eight planets. The planets in order from the Sun based on their distance are Mercury, Venus, Earth, Mars, Jupiter, Saturn, Uranus, and Neptune. The planets of our Solar System are listed

PLANETS IN OUR SOLAR SYSTEM CLOSEST TO THE SUN



based on their distance from the Sun.



Planet Facts ??? The Planets In Order. Our solar system has eight planets: Mercury, Venus, Earth, Mars, Jupiter, Saturn, Uranus and Neptune. With the exception of Uranus and Neptune, each of these planets can be seen unaided. All eight planets can be see through the use of an inexpensive amateur telescope or binoculars.



It's a common way astronomers measure distances in the solar system that accounts for the large scale of these distances. To put it another way, Mercury, which is closest, is 35.98 million miles from the sun, while Neptune, the farthest, is 2.79 billion miles from the sun. Earth is 92.96 million miles from the sun.



Now that we have explored the closest planets to the Sun, let's take a look at the remaining planets in our solar system. These planets include Jupiter, Saturn, Uranus, and Neptune. Each of these planets has its own unique characteristics and is located at varying distances from the Sun. Jupiter, the largest planet in our solar system, is the

PLANETS IN OUR SOLAR SYSTEM CLOSEST TO THE SUN



The main reason for the planets to vary their distance is due to elliptical orbits. No planet in our Solar System orbits the sun in a perfect circle which means that the distance between planets is never the same. For this reason, to calculate the distance, we use the average to measure how far planets are from one another.



Our solar system consists of our star, the Sun, and everything bound to it by gravity ??? the planets Mercury, Venus, Earth, Mars, Jupiter, Saturn, Uranus, and Neptune; dwarf planets such as ???



Mercury is the closest planet to the Sun in our Solar System. However, it is not the hottest We use cookies. By browsing our site you agree to our use of cookies. OK, Got it. Mercury is the closest planet to the Sun. It's orbit is very eccentric (i.e. non-circular) and Mercury comes to within 46 million km from the Sun at it's closest

PLANETS IN OUR SOLAR SYSTEM CLOSEST TO THE SUN



Mercury is the first planet from the Sun and the smallest in the Solar System English, it is named after the ancient Roman god Mercurius (), god of commerce and communication, and the messenger of the gods. Mercury is classified as a ???



Mercury is the first planet from the Sun and the smallest in the Solar System English, it is named after the ancient Roman god Mercurius (), god of commerce and communication, and the messenger of the gods. Mercury is classified as a terrestrial planet, with roughly the same surface gravity as Mars. The surface of Mercury is heavily cratered, as a result of countless impact ???



Mercury is the smallest planet in the solar system, and it is also the planet closest to the Sun, making it the most difficult of the planets to see with the unaided eye. Because its rising or setting is always within about two hours of the Sun's, Mercury is never observable when the sky is fully dark.

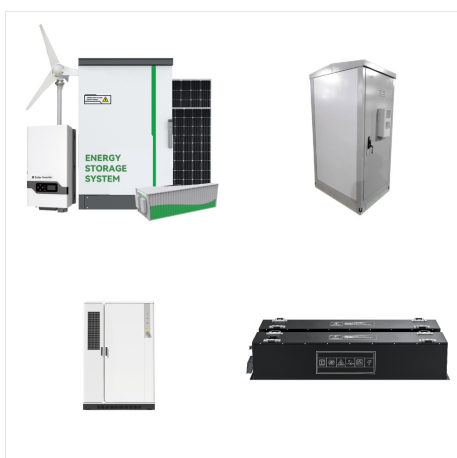
PLANETS IN OUR SOLAR SYSTEM CLOSEST TO THE SUN



Our solar system includes the Sun, eight planets, five officially named dwarf planets, and hundreds of moons, and thousands of asteroids and comets. Our solar system is located in the Milky Way, a barred spiral galaxy with two major arms, and two minor arms.

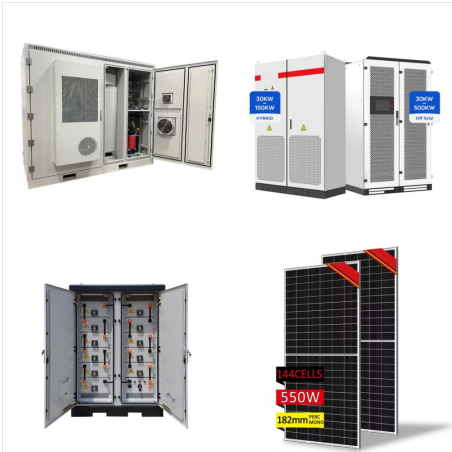


Our solar system is made up of a star???the Sun???eight planets, 146 moons, a bunch of comets, asteroids and space rocks, ice, and several dwarf planets, such as Pluto. Venus, Earth, Mars, Jupiter, Saturn, Uranus, and Neptune. Mercury is closest to the Sun. Neptune is the farthest. Planets, asteroids, and comets orbit our Sun. They travel



The smallest planet in our solar system and nearest to the Sun, Mercury is only slightly larger than Earth's Moon. Mercury formed about 4.5 billion years ago when gravity pulled swirling gas and dust together to form this small planet nearest the Sun. Like its fellow terrestrial planets, Mercury has a central core, a rocky mantle, and a

PLANETS IN OUR SOLAR SYSTEM CLOSEST TO THE SUN



The order and arrangement of the planets and other bodies in our solar system is due to the way the solar system formed. Nearest to the Sun, only rocky material could withstand the heat when the solar system was young. For this reason, the first four planets ??? Mercury, Venus, Earth, and Mars ??? are terrestrial planets.



The closest planet to the Sun is Mercury. That's why it's sometimes called the "innermost planet.". It orbits the Sun at an average distance of 36 million miles (58 million kilometers). There are no other planets that are closer to the Sun than Mercury. Mercury is the smallest planet in the solar system, and it is not very hospitable to



The sun and the planets of our solar system. Mercury is the closest planet to our star, the Sun, and moves incredibly quickly around it. The planet flies around the Sun in only 88 days, which is why it was named Mercury after the swift-footed messenger of the gods.

PLANETS IN OUR SOLAR SYSTEM CLOSEST TO THE SUN



Study with Quizlet and memorize flashcards containing terms like The following images show Earth and the four jovian planets of our solar system. Rank these planets from left to right based on their distance from the Sun, from closest to farthest. (Not to scale.), The following images show Earth and the four jovian planets of our solar system.



Mercury is the first planet from the Sun in our Solar System. He amazed people with his retrograde movements from the beginning and his recently discovered phases and moon-like similarities. Mercury is the closest (first) planet to the Sun and the smallest member of our Solar System s diameter is 4,878 kilometers, and its mass is only 5.5% of the mass of the Earth.



? Mercury is the smallest planet in our solar system. Mercury is a terrestrial planet. It is small and rocky. Mercury has a thin exosphere. Mercury's surface can be as hot as 800 degrees F during the daytime and as cold as -300 degrees F during the nighttime. (But Mercury is not the hottest planet in the solar system. The hottest planet is Venus.)

PLANETS IN OUR SOLAR SYSTEM CLOSEST TO THE SUN



The planets in order from the sun are Mercury, Venus, Earth, Mars, Jupiter, Saturn, Uranus, Neptune and finally the dwarf planet Pluto.. Most people have at least heard about our solar system and the planets in it. Our solar system is ???



Our solar system has eight planets, and five dwarf planets - all located in an outer spiral arm of the Milky Way galaxy called the Orion Arm. Mercury is the smallest planet in our solar system, and the nearest to the Sun. Explore Mercury. Venus Facts. Venus is the second planet from the Sun, and Earth's closest planetary neighbor. Explore

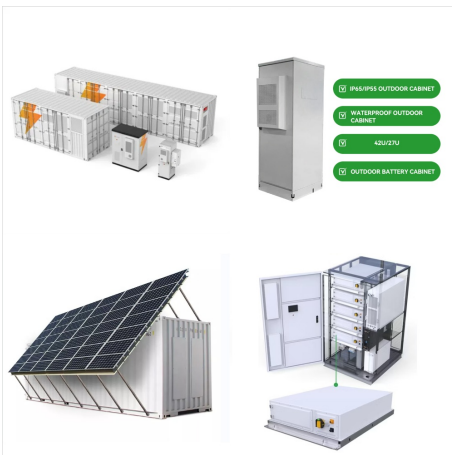


Study with Quizlet and memorize flashcards containing terms like Which of the following lists the planets of our solar system in the correct order from closest to farthest from the Sun?, Suppose you view the solar system from high above Earth's North Pole. Which of the following statements about planetary orbits will be true?, Which of the following statements about our Sun is not ???

PLANETS IN OUR SOLAR SYSTEM CLOSEST TO THE SUN



Inner Solar System The four rocky planets of the inner solar system. Image credit: NASA. Mercury is the closest planet to the sun at an average distance of 35-million miles. The elliptical orbit causes Mercury to get as close to the sun as ???



Proxima Centauri (Alpha Centauri C) At 4.2 light-years from Earth, Proxima Centauri is the closest star to our planet other than the sun. Its name means "nearest to Centaurus" in Latin. Proxima