

What planets are in the Solar System?

As you zoom out, the solar system's outer planets - Jupiter, Saturn, Uranus and Neptune - come into view. The date slider allows you to move forwards or backwards by a few months to see the motion of the planets along their orbits. The top panel shows where the planets appear in the night sky from the Earth.

How many planets are in our Solar System?

Our solar system consists of our star, the Sun, and everything bound to it by gravity - the planets Mercury, Venus, Earth, Mars, Jupiter, Saturn, Uranus, and Neptune; dwarf planets such as Pluto; dozens of moons; and millions of asteroids, comets, and meteoroids. Beyond our own solar system, there are more planets than stars in the night sky.

Which planets are located at the centre of the Solar System?

Located at the centre of the solar system and influencing the motion of all the other bodies through its gravitational force is the Sun, which in itself contains more than 99 percent of the mass of the system. The planets, in order of their distance outward from the Sun, are Mercury, Venus, Earth, Mars, Jupiter, Saturn, Uranus, and Neptune.

Which planets have a ring system?

The planets, in order of their distance outward from the Sun, are Mercury, Venus, Earth, Mars, Jupiter, Saturn, Uranus, and Neptune. Four planets--Jupiter through Neptune--have ring systems, and all but Mercury and Venus have one or more moons.

How many dwarf planets are there in the Solar System?

There are five officially recognized dwarf planets in our solar system: Ceres, Pluto, Haumea, Makemake, and Eris. The solar system has eight planets: Mercury, Venus, Earth, Mars, Jupiter, Saturn, Uranus, and Neptune. There are five officially recognized dwarf planets in our solar system: Ceres, Pluto, Haumea, Makemake, and Eris. What is a Planet?

What are the first 4 planets from the Sun?

The first four planets from the Sun are Mercury, Venus, Earth, and Mars. These inner planets also are known

PLANETS IN OUR SOLAR SYSTEM DIAGRAM



as terrestrial planets because they have solid surfaces. Mercury is the smallest planet in our solar system, and the nearest to the Sun. Venus is the second planet from the Sun, and Earth's closest planetary neighbor.

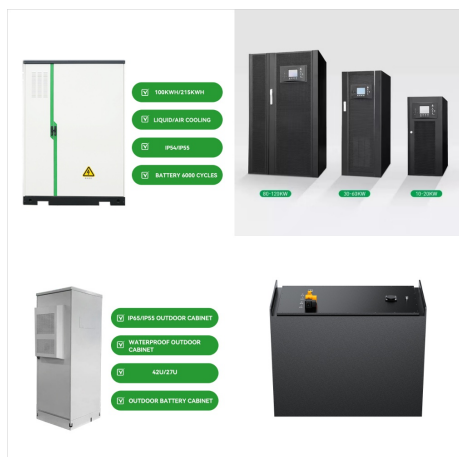


As you zoom out, the solar system's outer planets ??? Jupiter, Saturn, Uranus and Neptune ??? come into view. The date slider allows you to move forwards or backwards by a few months to see the motion of the planets along their orbits.



Neptune is the farthest planet from the Sun in our solar system. Neptune is the windiest planet in our solar system, with wind speeds reaching up to 1,300 miles per hour. Neptune has a huge spinning storm known as "The Great Dark Spot". It has the strongest winds ever recorded on any planet in the solar system.

PLANETS IN OUR SOLAR SYSTEM DIAGRAM



Our solar system includes the Sun, eight planets, five officially named dwarf planets, and hundreds of moons, and thousands of asteroids and comets. Our solar system is located in the Milky Way, a barred spiral galaxy with two major arms, and two minor arms.



Inner Solar System. These inner solar system diagrams show the positions of all numbered asteroids and all numbered comets on 2018 January 1. The orbits and positions of the planets Mercury, Venus, Earth, Mars, and Jupiter are also shown. Asteroids are yellow dots and comets are symbolized by sunward-pointing wedges.

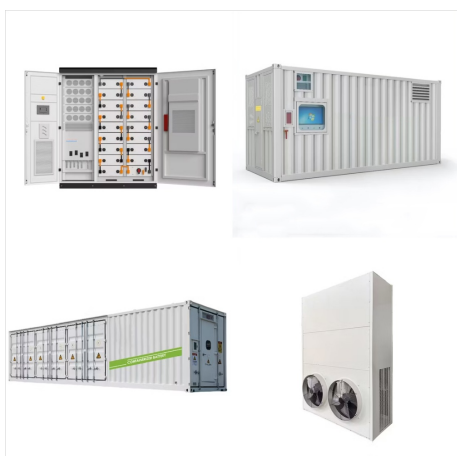


Earth is the third planet in our solar system. It is located at an average distance of 92.96 million miles (149.60 million km) from our star. Our beautiful planet is ideally placed inside the goldilock zone, making it the only planet of our solar system where intelligent life could thrive.

PLANETS IN OUR SOLAR SYSTEM DIAGRAM



The solar system has eight planets: Mercury, Venus, Earth, Mars, Jupiter, Saturn, Uranus, and Neptune. There are five officially recognized dwarf planets in our solar system: Ceres, Pluto, Haumea, Makemake, and Eris.



With lots of 3D features this application allows you to explore the solar system with many basic facts thrown in. It also allows you to see all the stars and constellations. Solar System Maps. To see a some interesting solar system maps including "Space without the Space" and "If the moon were only 1 pixel", visit our Solar System Maps page.



Solar System Formation. The solar system is located in one of the spiral arms of the Milky Way galaxy. It was born about 4.5 billion years ago when a cloud of interstellar gas and dust collapsed. Most of the material was pulled toward a central point: nearly all of the solar system's mass???99.8%???is in the Sun.

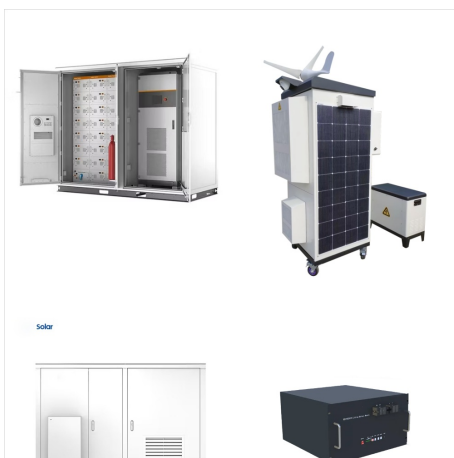
PLANETS IN OUR SOLAR SYSTEM DIAGRAM



Our solar system consists of our star, the Sun, and everything bound to it by gravity ??? the planets Mercury, Venus, Earth, Mars, Jupiter, Saturn, Uranus, and Neptune; dwarf planets such as ???



Solar System Planets. The solar system includes the Sun and other celestial bodies. All the planets orbit the Sun, which is at the center. Our solar system has eight planets, along with many asteroids, comets, and meteors. The Sun's gravity keeps the planets in orbit.



The hottest planet in our solar system . explore; All About Venus. The hottest planet in our solar system . explore; All About the Planets. Learn more about the planets in our solar system . explore; All About the Planets. Learn more about the planets in our solar system

PLANETS IN OUR SOLAR SYSTEM DIAGRAM



Brought to you by Solar System Scope, this 3D simulation is an interactive map of our solar system. This is a great tool for adults and children alike to learn about the different celestial bodies that exist in our system and how they move about our sun. How to use: Click on the image to go to the menu section.



We mean waaaay out there in our solar system ??? where the forecast might not be quite what you think. Let's look at the mean temperature of the Sun, and the planets in our solar system. The mean temperature is the average temperature over the surface of the rocky planets: Mercury, Venus, Earth, and Mars. Dwarf planet Pluto also has a solid



The planets of the outer solar system are Jupiter, Saturn, Uranus, and Neptune (Pluto is now classified as a dwarf planet): Even the dots on the diagrams above are too big to be in proper scale with respect to the sizes of the orbits. of the things that makes Earth special of particular interest to the exoplanet search is our location

PLANETS IN OUR SOLAR SYSTEM DIAGRAM



There may be hundreds of dwarf planets in Pluto's realm. Our solar system formed about 4.6 billion years ago. The four . planets closest to the Sun ??? Mercury, Venus, Earth, and Mars ??? are called the terrestrial planets because they have solid, rocky surfaces. Two of the outer planets beyond the orbit of Mars ???



The mass of the sun accounts for 99.86% of the weight of our solar system. Fusion from the sun heats our solar system. The planets closest to the star are densest containing an iron or nickel core. Their exterior is silicate and metals. Finally, the less dense planets are on the exterior. The asteroid belt is kilometers in size and positioned



? The hottest planet in our solar system . explore; All About Venus. The hottest planet in our solar system . explore; All About the Planets. Learn more about the planets in our solar system . explore; All About the Planets. Learn more about the planets in our solar system

PLANETS IN OUR SOLAR SYSTEM DIAGRAM



Optional back with scale and orbit diagrams. There are two iterations of this poster and Version B. Download full set; About the image: This artist's rendering shows the eight major planets of our solar system lined up as if they were transiting the Sun. Although such a view would not be possible in reality, the graphic is intended to show



The solar system includes eight planets, and the earth is one of them. They are: They can use a solar system diagram to understand the distance of the plants from Also, it contains substantial built-in templates that you can use for free, or share your science diagrams with others in our template community. Try Edraw.AI Free Online



Mars, the red planet, is the seventh largest planet in our solar system. Mars is about half the width of Earth, and has an equatorial diameter of about 4,221 miles (6,792 kilometers). Mars is the fourth planet from the Sun, orbiting at an average distance of 141.6 million miles (227.9 million kilometers).

PLANETS IN OUR SOLAR SYSTEM DIAGRAM



The solar system has eight planets: Mercury, Venus, Earth, Mars, Jupiter, Saturn, Uranus, and Neptune. There are five officially recognized dwarf planets in our solar system: Ceres, Pluto, Haumea, Makemake, and Eris. Get the Facts.



This diagram of the universe from the Middle Ages shows Earth at the center, with the Moon, the Sun, and the planets orbiting Earth. According to this hypothesis, the Sun and the planets of our solar system formed about 4.6 billion years ago from the collapse of a giant cloud of gas and dust, called a nebula.



This planet has a long orbital duration, 84 years. A day on Uranus, on the other hand, is the shortest, lasting only 17 hours. Currently, 27 moons have been confirmed to orbit around Uranus. The diameter has been ???

PLANETS IN OUR SOLAR SYSTEM DIAGRAM



Astronomers, however, are still hunting for another possible planet in our solar system, a true ninth planet, after mathematical evidence of its existence was revealed on Jan. 20, 2016. The



Visualize orbits, relative positions and movements of the Solar System objects in an interactive 3D Solar System viewer and simulator. We use cookies to deliver essential features and to measure their performance. Learn more. Got It! menu. Major ???



However, we shouldn't forget about an often overlooked, yet significant part of our solar system. Those are the comets and asteroids, remnants from the formation of our system almost 4.6 billion years ago. Being part of a solar system tour, you wouldn't just be observing the cosmos. Instead, you'd immerse yourself in a cosmic ocean, each

PLANETS IN OUR SOLAR SYSTEM DIAGRAM



Mars, the red planet, is the seventh largest planet in our solar system. Mars is about half the width of Earth, and has an equatorial diameter of about 4,221 miles (6,792 kilometers). Mars is the fourth planet from the Sun, ???