



The worlds first truly plug and play electric power steering controller, utilizing OEM Dodge, Volvo, Toyota and Mazda electric power steering pumps and assist systems. Simple installation, clear instructions and infinite power steering reliability.



The power steering pump pulley is connected to the power steering system via one or two belts, depending on the make and model of your vehicle. The belt provides power to the power steering pump by turning the pulley. The power steering system works in an environment with high heat and friction, so various parts are bound to break and need to be replaced over ???



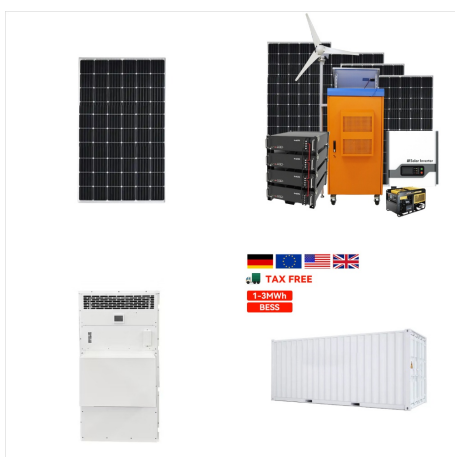
Once we receive the steering / braking unit, we will modify it and return it to the Mobility Dealer along with a vehicle specific back up system. We pride our selves in providing the fastest turn around time in the industry while providing the highest quality products.



The Minn Kota Ultrex Quest is the only unit with true power steering, which provides instantaneous directional response. Power-Pole claims it is "quieter than nature itself" due to its stealth steering drive. The power unity system is a fully custom brushless motor that is built to be quieter and more powerful than leading competitors



???Bixpy Power Pole Adapter, All hardware required for Power Pole ready kayaks, Pole Steering Adapter illustrated NOT included : Size  
 ???Power Pole : Additional Information. ASIN : B07XZK55LD : Customer Reviews: 5.0 5.0 out of 5 stars 2 ratings. 5.0 out of 5 stars : ???



The new steering only works with the new pole BUT, this pole is made in the USA, it has a better cinching system grabbing around the extruded tube so you pole will never come loose (see here) And the pole weight is lighter than a RRP billet pole. Plus it's not a twin tube knock off like everything else on the market. That's a winner folks.



5. Power pole goes out of work. Some incidents cause the power pole to go out of work. One customer shared that he forgot to turn off the power pole. After a week, when he went fishing, he found out that. He then turned off and again turned on the power pole. But this time, the green light came, but he didn't hear any chime sound.



Cleaning my tanks as the poles were sluggish. Will hydraulic steering fluid work in them? Got a bottle of that close by but not wanting to put something in them that'll hurt em. Green Marine can be purchased through us or any authorized dealer or on Power Poles website. As an alternative, any ISO32 hydraulic fluid or SAE10 oil can be used



The Bixpy Pole Steering can be used with any of the Bixpy WillFit??? Adapters that offer a 1" vertical pipe (the blue pipes). This includes the Power Pole WillFit??? Adapter, the Universal Kayak & Canoe Adapter, the Hobie(R) Pro Angler / Compass WillFit??? Adapter and the Transom WillFit??? Adapter.. The steering adapter bolts onto the vertical pipe and tightens using stainless steel ???



Page 1 INSTALLATION & OWNER's GUIDE; Page 2 CONGRATULATIONS on your purchase of the MOVE ??? The first Trolling Motor from Power-Pole, home of the original Shallow Water Anchor. (R); Page 3: Table Of Contents COMPLIANCE STATEMENTS..40 APPENDICES Appendix A: Gel-Coat Drilling Procedure..41 Appendix B: Wire Connection/Termination ???



Low power steering fluid could be caused by small seepage over the year or by a large power steering leak that needs to be addressed if you have to add power steering fluid every month. To add power steering fluid, remove the power steering cap and notice the dipstick on the bottom part of the cap. You could measure the ps fluid level with the

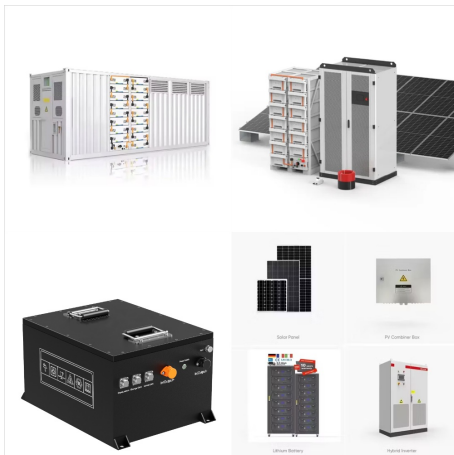


When the fluid flowing from the return hose is clean, turn off the engine, and reconnect the return hose. Add a bottle of power steering conditioner to the reservoir. Top up with power steering fluid to the proper level. Start the vehicle, and check for leaks. If the power steering pump "whines" or "growls," there is air caught in the





Return the vehicle to the ground and let the car sit at idle for 2-3 minutes while cycling the steering in both directions. At this point you should have smooth operation of the power steering and no noise from the power steering pump. The fluid should be clear and free of any bubbles or foam and the level should remain constant.



Power steering systems incorporate essential components like a rotary-vane pump, which is driven by the car's engine through a belt and pulley mechanism. To guarantee top performance, regular maintenance is vital. Here are some maintenance tips: Check the power steering fluid level regularly and top it up if needed. Inspect for leaks in the system, especially ???



The elements used in power steering is a hydraulic pump, fluid reservoir, hoses, lines; and either a power assist unit mounted on or integral with, a power steering gear assembly. Whereas manual steering has a steering wheel and column, a manual gearbox and rack & pinion assembly, steering knuckles and ball joints, and the wheel spindle assemblies.



As the poles come down, collapse your knees a bit while firing your abdominals and hip muscles to maintain stability in the spine. Apply power throughout the poling motion on flatter terrain; rather than tapping or stabbing the snow, use the length of the poles to cycle through a full range of motion. The return to the starting position is



For next-gen performance, the motor is built with Power-Pole's Power Unity System, meaning every component is custom engineered to optimize all levels of performance for 30% more thrust and efficiency, while maintaining silent operation with MOVE's Stealth Steering Drive and Techflow propeller.



The power steering system is driven by the car's engine via a belt, which runs from the crankshaft to the steering pump. Some cars have a single serpentine belt that snakes through the engine pulleys, while others have multiple belts. If any belt becomes glazed, frayed, or breaks, it will cause the system to malfunction.



Leaking or low power steering fluid: Power steering fluid is the lifeblood of the steering pump, so driving with low or leaking steering fluid will cause problems for the pump. Over time, the pump can also wear out due to age. The power steering reservoir tank is found in the engine bay, usually on top of the steering pump or on the passenger right-hand side, depending on your ???



What Is a Power Steering Pump? The power steering pump is a hydraulic pump that handles the pressurizing of the hydraulic (steering) fluid through high speeds to provide pressure differentials supplied through the high-pressure line to the steering rack and back to the reservoir.. The power steering pump provides "power assists," ensuring that your steering wheels are ???



Power Steering Fluid ??? American Vehicles (GM, Ford, Chrysler, Chevrolet, Dodge, etc.) For brand specific Power Steering Fluid, check these links: Honda Power Steering Fluid (Use the genuine fluid, it is cheap and can save you from problems down the road) Toyota Power Steering Fluid (Yes, Toyota uses automatic transmission fluid for power



If you're getting ready to remove a power steering pulley by using a hammer, shop press, or 3-jaw puller tool??? STOP! You would be wise to read through the following article to get some tips on the process and tools needed to properly and safely remove a pulley without doing damage to yourself or the parts.



A power-steering helm also needs integrated lockouts or "stops" to ensure that feedback from the rudder doesn't push fluid back up into the system and torque the steering wheel. Maximum backpressure for the lockouts is 300 psi. 2. Size (It Matters) Steering hoses must be sized to the system pump's flow capacity.



Components of Power Steering. Power steering is an essential component in modern vehicles that makes steering easier and more comfortable. It consists of several key components, including the power steering pump, hoses, steering gear, and steering linkage. The power steering pump is responsible for generating hydraulic pressure that assists in turning ???





Furthermore, it is required that the function which assists the turning power of the steering wheel continues. In this report, I will introduce the control (Backup control) which assists steering wheel turning power even when EPS fails. Key Words: electric power steering, EPS, failure, Backup control, assist Fig. 1 Electric power steering (EPS



Steering: Stealth Steering Drive: Lift-Assist: Step & Stow: Heading Sensor (Built-In) Yes: GPS (Built-In) Yes: Advanced GPS Navigation Modes: Yes: Indicator LEDs: Yes (Anchor Mode On, Prop On, Navigation Heading On) Power-Pole App: Connect, Customize, and Control: Warranty Lifetime: Lifetime On Shaft / 3yrs On All Other Components: Wireless