



UniFi Power Backup ready. 1.3" touchscreen for management. Log in. To subscribe to back in stock emails. Sold Out. 10G Direct Attach Cable. \$13.00. Product. Technical Specification. In The Box. Build Features. Company. Careers; UNAS-Pro. \$499.00. Sold Out. 2U rack-mount NAS with (7) 2.5/3.5" drive bays and 10 Gbps performance designed for



Buy Ubiquiti Power Backup. Price from 361.71 EUR. Worldwide delivery! Full description, specifications, reviews, extended warranty option. ??? +371 60 000 888. The UniFi(R) SmartPower Redundant Power System, model USP-RPS, ???



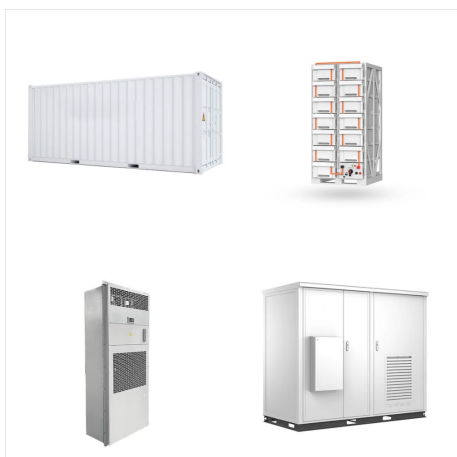
This is not like a UPS or battery backup. It's meant to provide a secondary power supply to the devices it's compatible with. So if a switch or console's PSU fails, the RPS will provide power to it until the bad PSU can be replaced. If the power goes out completely, this RPS will also go off. Unless of course it's plugged in to a UPS.



Power Backup. USP-RPS. ?305.00. 950W redundant power supply for rack-mounted UniFi devices. 950W DC power availability (6) DC SmartPower ports. 950W redundant power supply for rack-mounted UniFi devices. 950W redundant power supply for rack-mounted UniFi devices. Visiting us from ? Continue to United States Store.



Hello, Saw the Power Backup was back in stock and I was going to snag one but then I saw this picture on the SmartPower Cable: . I don't see anything about these "Power Battery" or "Power Backup Pro" products but would love to have the option to hook a battery to the backup and have the backup connect to a modem.



Advice needed: Best battery backup for UniFi Equipment . Question Hi all - My rack is primarily the DMP Pro and 16-port PoE Swtich. What would be a really good battery back up option for this type of setup? Archived post. New comments cannot be posted and votes cannot be cast.



A cable used to deliver redundant power from an associated SmartPower device. Visiting us from ? Continue to United States Store. Select Other Country / Region. United States. UniFi. UISP. AmpliFi. Supported UniFi SmartPower connect. Cable length 1.5 m. Add to Cart. Technical Specification. Deployment. USP-Cable; Length: 1.5 m (4.9 ft)



Pro A/V Support * Power Redundancy. UniFi Power Backup ready. Dual hot-swappable PSUs* UniFi Power Backup ready. UniFi Power Backup ready *Available on select models. Learn More. Learn More. Learn More. Learn More. Thoughtful Innovations. Designed For Scale. Wonderfully Insightful. Topology. VLAN Management.



In addition, the UniFi SmartPower PDU Pro has four USB type C ports for additional power sources. The UniFi SmartPower PDU Pro is a device installed between the AC outlet and the power plug of an internet modem or router, and is compatible with all types of Internet modems with US AC plug, including cable modems, DSL routers and optical network



This is not like a UPS or battery backup. It's meant to provide a secondary power supply to the devices it's compatible with. So if a switch or console's PSU fails, the RPS will provide power ???



Power Backup. \$399.00. Power Distribution Pro. USP-PDU-Pro. \$279.00. Sold Out. Designed to supply power to an entire rack-mounted UniFi system and remotely manage each connection. Designed to supply power to an entire rack-mounted UniFi system and ???



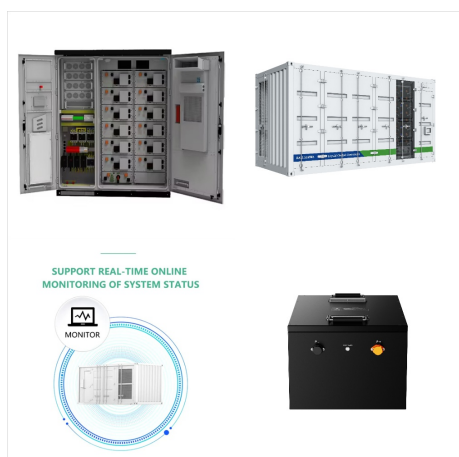
Review Ubiquiti Networks USP-PDU-PRO. Buy Ubiquiti Networks Power Distribution Professional featuring 16 x 3-Prong Female Ports, 4 x USB-C Ports (2A), 1875W Max Load, 3 x Gigabit RJ45 Ports, 1 x 100Mb RJ45 Port, 1.3" Touchscreen, Circuit Breaker, Includes Rackmount Kit. Battery Backup: No. Outlets: 16x NEMA 5-15R. Additional I/O: 4x RJ45 4x



Designed to supply power to an entire rack-mounted UniFi system and remotely manage each connection. Power Distribution Pro. USP-PDU-Pro. Datasheet. In The Box. Marketing Images. Installation Guide. Zoom in. Zoom in. Mechanical; Dimensions: 442.4 x 87.4 x ???



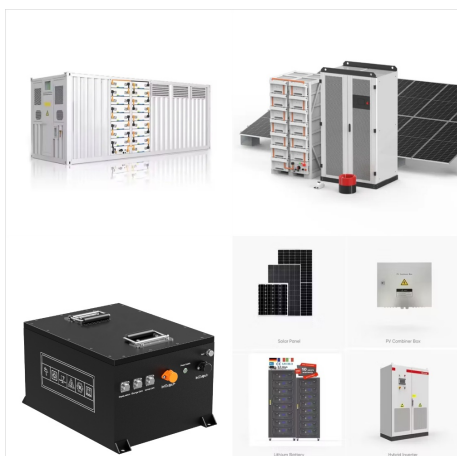
Power Backup. USP-RPS. \$549.00. 950W redundant power supply for rack-mounted UniFi devices. 950W DC power availability (6) DC SmartPower ports. 950W redundant power supply for rack-mounted UniFi devices. 950W redundant power supply for rack-mounted UniFi devices. Canada. UniFi. UISP. AmpliFi. What's New. UniFi Cloud Gateways. Switching. WiFi.



Pretty sure you're talking about the RPS, which is a "redundant power supply." It is not a UPS, which is an "uninterruptible power supply" - which comes with batteries. AFAIK Unifi does not make a UPS. RPS is designed to provide power in case the equipment's on-board power supply unit fails, not if your incoming power fails.



? A Review and Full Overview of the UniFi UNAS NAS OS. Update ??? The UniFi UNAS Pro is now back in stock in the U.S and UK HERE Stocks have been good regardless! The UniFi UNAS Pro is Ubiquiti's first serious foray into the NAS market, and it introduces a distinct software platform designed to cater to users already embedded in the UniFi ecosystem.



Seamless internet failover for UniFi gateways. Bring your own SIM for LTE data. UniFi Cloud Gateways. Switching. WiFi. Camera Security. Door Access. CloudKeys & Gateways. Power Tech. Integrations. Accessories. Back. LTE Backup Internet with UniFi. Play. LTE Backup Pro. U-LTE-Backup Pro. 245,00 ??? LTE Backup Pro.



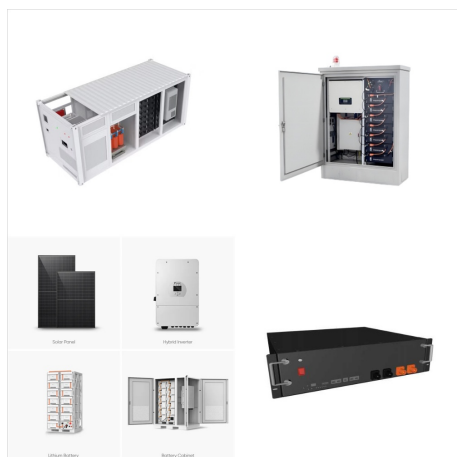
LTE Backup Pro. U-LTE-Backup Pro. Datasheet. Marketing Images. Installation Guide. Zoom in. Zoom in. Mechanical; Dimensions: 66 x 202 x 32 mm (2.6 x 8 x 1.3") Power supply: UniFi PoE switch 48V, 0.5A PoE adapter: Supported voltage range: 44???57V DC: Max. power consumption: Excluding PoE passthrough output: 8.5W:



UniFi Power Backup ready. 1.3" touchscreen for management. UNAS Pro. 2U rack-mount NAS with (7) 2.5/3.5" drive bays and 10 Gbps performance designed for large-scale file storage and sharing. Overview (7) 2.5/3.5" HDD / SSD support (1) 10G SFP+ uplink and (1) GbE RJ45 port.



950W redundant power supply for rack-mounted UniFi devices. 950W redundant power supply for rack-mounted UniFi devices. Cloud Gateways. Switching. WiFi. Camera Security. Door Access. Integrations. Power Backup. USP-RPS. Datasheet. In The Box. Marketing Images. Installation Guide. Zoom in. Zoom in. Mechanical; Dimensions: 442.4 x 325.6 x 43.



10G multi-WAN independent gateway with UniFi Power Backup support designed to protect large-scale networks. Cloud Gateways. Switching. WiFi. Camera Security. Door Access. Integrations. Accessory Tech. Identity. Support. Gateway Pro. UXG-Pro. Datasheet. In The Box. Marketing Images. Installation Guide. Zoom in. Mechanical; Dimensions: 442.4



Do you know that the RPS is not a battery backup?
RPS is a backup power source, it connects to supported devices and if an internal power supply dies, it uses the RPS for power. The only battery backup I'm aware of is the UniFi Mission Critical.
UniFi 7 Innovations: U7 Pro Max | U7 Pro Wall | U7 Outdoor