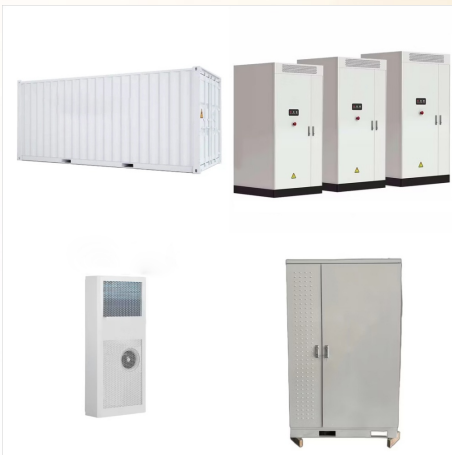




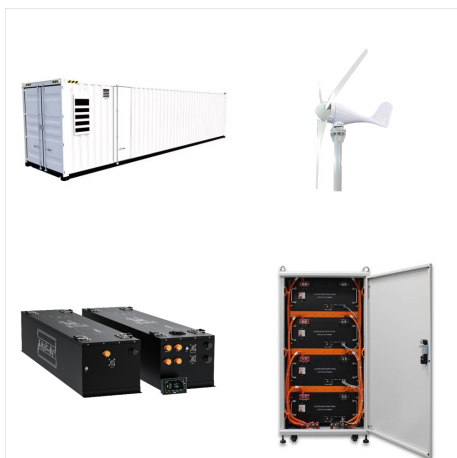
Driver Heads; Fairway Wood Heads; Hybrid Heads; Iron Heads; Wedge Heads; Chipper Heads; Putter Heads; For Women; For Juniors; Shafts. Graphite Shafts; Steel Shafts; Putter Shafts; Power Play System Q2 Iron (RH) #4 - Clubhead SKU:I3486-004. \$6.99. In stock: Power Play System Q2 Iron (RH) #5 - Clubhead SKU:I3486-005. \$6.99.



Power Play System Q Adrenaline Fairway 3 Wood 15 Degree loft. Grip should be replaced. Right Handed Club. Power Play System Q Adrenaline Fairway 3 Wood 15 Degree loft. Grip should be replaced. " Excellent looking used club. 3 Wood Fairway Driver 43 1/4" long. Grip is a little dry.



These can all affect Powerplay if performed in the right systems, if you are pledged to a Power. Will on foot activities play a larger role in Powerplay 2.0? On foot activities on planets will indeed have a greater role in Powerplay, some examples of those include uploading spyware to settlements in rival Power systems and delivering biological



PP Select 3000 Ti Drivers Beta-Ti face is designed specifically to fit your trajectory. Power Play System 3000 Ti 320cc Driver. What Our Customers are Saying Read 6 Customer Reviews Write a Review. Share with Your Friends I am still trying to sell my Taylor Made. My friends try the Power Play stick and they all want one just like it. If



Get the best deals on Power Play Fairway Wood Golf Clubs when you shop the largest online selection at eBay . Free shipping on many items Power Play System Hybrid Q Afterburners 3H Driver 19 Degree RH Speedrated 75. Pre-Owned ? Power Play. \$20.50. \$24.60 shipping. Power Play Golf Tour Model 230 Fairway Wood - #3 Wood / 15? Loft



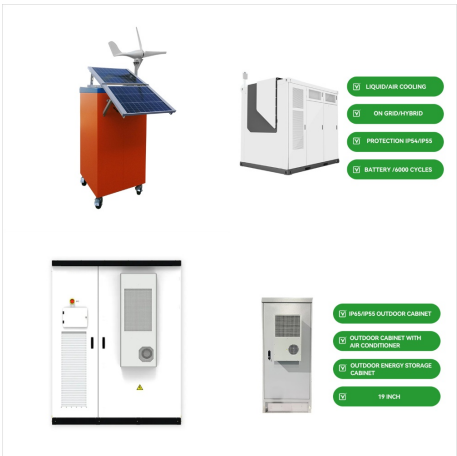
The System Q Fairways unique sole design and positioning of the rear weights ensures a higher launch angle and added forgiveness, even for those difficult trouble shots. The head comes preset with two 6 gram tungsten screws.



Together with the automatic frequency drift compensation (F-Lock) QUBIG's RF drivers have become a plug & play system where only two input parameters need to be adjusted: the desired frequency and modulation depth. Q-Drivers are based on a sophisticated modular concept that allows flexible and easy adaptation to a wide variety of



I purchased the Power Play system Q with just graphite shaft shortened .25 inches with a 9 degree head and winn grip. i use a low trajectory setting and played my local course today and my longest drive of the day was about 318 yards right center fairway using a maxfli noodle rotini ball.



Power Play Golf provides golfers with high-performance equipment to maximize their power, accuracy, and overall game potential. Home | Power Play Juggernaut Titanium Draw Driver SKU: TW-1375. Offset Hosel : 2 Review(s) \$ 99.95 \$ 94.95 . 5% Off Check to compare Power Play Juggernaut Titanium Driver Head



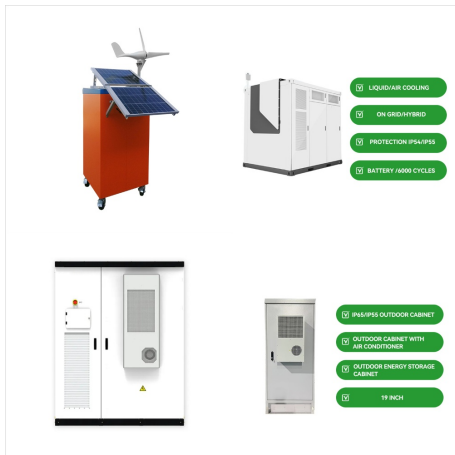
Looking for a #1 Iron you can actually hit?. Try the hot Power Play System Q Adrenaline #1 Hybrid Iron. Never hit a # 1 iron?. Now you can - and with ease. These are more iron like. If you are good with irons but just struggle with the longer irons, then you will like the Adrenaline #1 Hybrid-Iron.



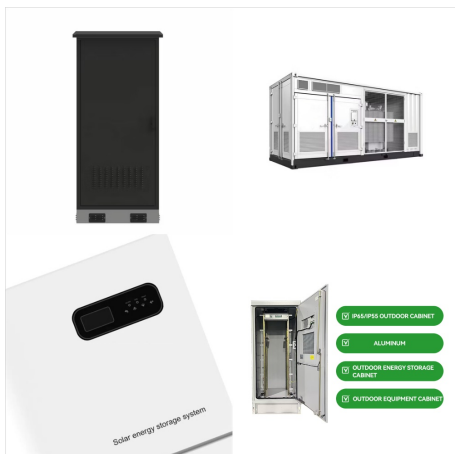
Power Play Golf Club Equipments System Q2 Titanium Driver ??? A square shaped profile, but a look and sound that even better golfers will revere. The large footprint at address coupled with additional material in the rear corners formed by the square shape, combine to produce superb perimeter weighting.



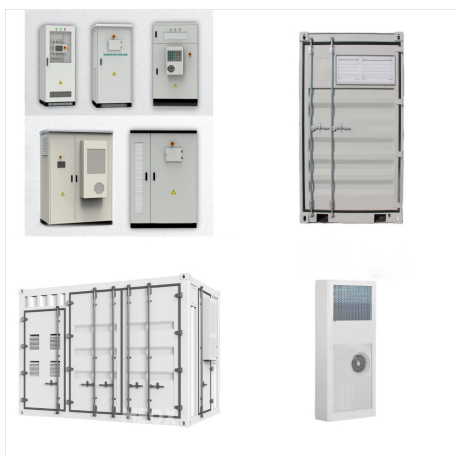
Get the best deals on Power Play Women Golf Clubs when you shop the largest online selection at eBay . Free shipping on many items | Browse your favorite brands | affordable prices. Women's Power Play System Q Adrenaline #1 Driving Iron 15? Driver Lady "L" Flex. Brand New ? Power Play. \$79.95. Free shipping.



Get the best deal for Power Play Golf Clubs from the largest online selection at eBay.ca. | Browse our daily deals for even more savings! | Free shipping on many items! Power Play System Q 10.5 Driver / RH /Regular Graphite ~44.5"/ Good Grip /dj8037. Pre-Owned ? Power Play. C \$43.03. C \$34.69 shipping.



Get the best deals on Power Play Iron Golf Clubs when you shop the largest online selection at eBay . Free shipping on many items | Browse your favorite brands | affordable prices. Women's Power Play System Q Adrenaline #1 Driving Iron 15? Driver Lady "L" Flex. Brand New ? Power Play. \$79.95. Senior Men Power Play System Q



Power Play System Q Afterburner Driver 10.5* / RH Pinemeadow Aldila Shaft R. Pre-Owned ? Power Play. \$30.00. or Best Offer. \$19.99 shipping. USED RH Power Play Juggernaut Titanium #5 Golf Fairway Wood Stiff Flex 5117-J517. Pre-Owned ? Power Play. \$82.47. Was: \$149.95 was - ???



The Power Play System Q Driver is a new benchmark in titanium driver technologies. The movable tungsten and aluminum weights create customizable launch angles and ball flight options. Six weight configurations give you total control of your game (see the weight setup tool on this page). The System Q includes two (2) six gram tungsten weights



Power Play System Q Hybrid Iron Staff Notice: House Keeping Note. Power Play System Q Hybrid Iron. By JohnBarry March 29, 2010 in General Equipment Talk. Callaway FT-9 Driver 10.5* Grafalloy Prolaunch Axis Blue. Callaway ???



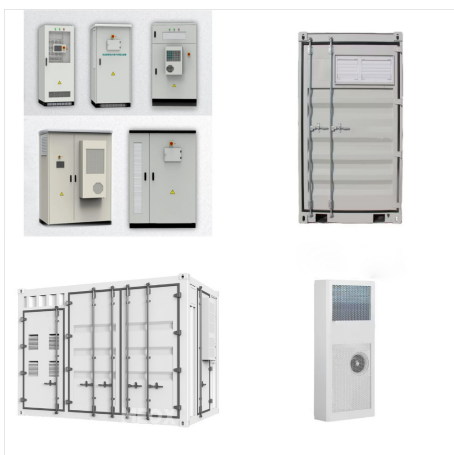
Let all-new Power Play System Q Adrenaline driver fuel your rush. Drag is evident in any object moving at fast speeds. The lower the drag, the faster the object will move. Think boxy cars vs a Ferrari. The Adrenaline driver incorporates wind-tunnel tested slipstream technology, which optimizes the head shape for reduced drag and faster clubhead



Download new and previously released drivers including support software, bios, utilities, firmware, patches, and tools for Intel(R) products. Overclock, monitor, stress, and tune your system to maximise performance. Ask the Support Community. Experts in the field, ready to help. Product Specifications. All the information you need at your



If you like the features of the Power Play System Q Driver you are going to love the matching fairway woods. The low profile design and added weights in the rear of the club make this one of the easiest clubs to hit. The two rear weights are positioned to help improve trajectory without having to sacrifice distance.



Personal or customer feedback wanted! like the specs, shape and adjustable weight options of the Q2.I was wondering what shafts (nothing exotic) you have used in this driver head.As a point of reference, I'm a mid-handicapper currently using the Caiman 10.5* with Hireko's house graphite (Apollo s



The original Power Play System Q fairway woods are excellent and the system Q2's add a little differently element with the square head. I can't really attest to comparisons between anything else I've tried because I have different shaft flexes in the two as well as cut differently. New Cobra Darkspeed Adapt driver - 2024 Shriners Children's



Power Play System Q Afterburner Driver 10.5* / RH Pinemeadow Aldila Shaft R. Pre-Owned ? Power Play. \$30.00. or Best Offer. \$19.99 shipping. Power Play Juggernaut Titanium Draw Non-Conforming 515cc Driver - Senior Flex. Brand New ? Power Play. \$199.95. Free shipping. 17 sold.



Looking for a #1 Iron you can actually hit?. Try the hot Power Play System Q Adrenaline #1 Hybrid Iron. Never hit a # 1 iron?. Now you can - and with ease. These are more iron like. If you are good with irons but just struggle with the longer irons, then you will like the Adrenaline #1 Hybrid-Iron.



Power Play System Q Adrenaline Titanium Driver with Quikfit. The QuikFit system is quick and affordable solution to custom clubfitting. The purpose is for fitting only (and not play) as a way to interchange heads with different shafts in order to ???



Power Play Juggernaut Driver Headcover . \$11.95. Add to Cart. Add to Compare. Power Play Juggernaut Max 10.5? Driver Head Right Handed . Special Price \$89.96 Regular Price \$119.95. Add to Cart. Add to Compare. Power Play Juggernaut Max Draw 10.5? Driver Head Right Handed Perhaps best of all, for fans of Power Play's Select 5000 Hybrid



If you like the features of the Power Play CT irons the Power Play System Q Titanium Driver and Power Play System Q Fairway Woods are a perfect complement. Features. Built standard with high quality Pinemeadow steel shaft from Apollo(R), a 125 gram shaft with a low to mid kick point



Like the Power Play System Q Driver the System Q Irons opens the door to technology that, until now, has been unavailable in the US. The design compares features and performance to the Taylor Made(R) RAC CGB utility iron set only sold in Japan. These irons feature an unconventional head shape very similar to design you would find in a hybrid club.