

How to fix SCR system fault?

Electrical and wiring issues, including battery connections and fuse checks, might help in resolving SCR system faults. In case of an SCR system fault, it is not recommended to drive the vehicle as it can impact engine performance and emissions control.

Why is my SCR system reducing power?

The reduction in power is due to the SCR system not being able to effectively reduce NOx emissions as a result of the malfunction indicated by the P207F code. Efficient reductant usage is essential for maintaining excellent engine power output and performance.

What causes SCR problems on a Kenworth Truck?

Common causes of SCR faults include faulty sensors, wiring issues, or DEF quality problems. Deal with electrical and wiring issues first, then check sensors and system components for faults. Modern Kenworth trucks are known for SCR system problems, indicating potential issues with the manufacturer's technology.

How do you fix a Kenworth SCR system fault?

To fix SCR system fault in a Kenworth, first, identify the specific fault code through diagnostic testing. Then, address the issue based on the detected fault code. Is your Kenworth truck experiencing an SCR system fault? Understanding the signs and knowing how to resolve this issue is vital for keeping your vehicle in top condition.

What causes SCR error codes & warnings?

These issues can disrupt the proper operation of the SCR system and trigger error codes or warnings. Excessive heat can impact the SCR system's components and cause faults. High temperatures can damage the SCR catalyst or the temperature sensors, leading to malfunctions.

What happens if the SCR system is not working correctly?

**Reduced Engine Performance:** If the SCR system is not functioning correctly, it can lead to reduced engine performance or even enter a derated mode to limit potential damage. **Warning Lights:** Dashboard warning lights specific to the SCR system can indicate issues.



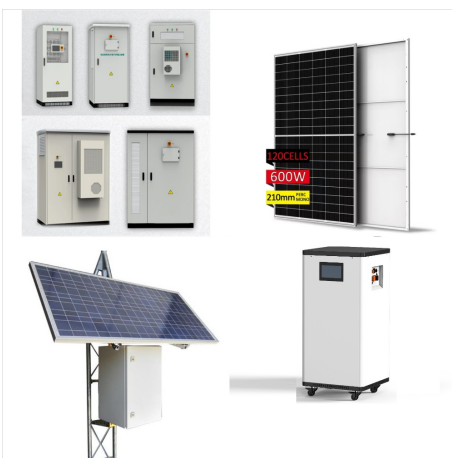
# POWER REDUCED DUE TO SCR SYSTEM FAULT



Once the SCR system fails, this is not just harmful to the truck but also to the environment. Find out what you need to know about fixing the SCR system fault and other key tips to keep in mind. Let's get right into it. How To Fix SCR System Fault. First of all, let us talk about the SCR system on your truck.



? Came back to truck and got a Power reduced due to SCR on dash. Started driving and got a Engine derate warning, along with check engine light, and SCR system fault or detected. Manually regen'd for an hour but that didn't fix anything. Changed both inlet and outlet NOx sensor but still codes. Found the connector to the Inlet NOx sensor is a



Left truck running over night (was -30f), started driving in morning and started getting Engine derate in 1 hr, Power reduced due to SCR, and SCR fault detected or altered. Did a 1 hour manual regen, but codes kept showing. Had to do a load and all throughout the day I kept getting those codes, with the derate in 59minutes resetting as I was



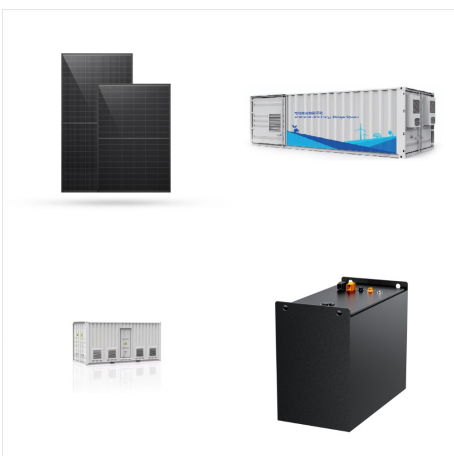
# POWER REDUCED DUE TO SCR SYSTEM FAULT



Contact ITC Support SCR stands for Silicon Controlled Rectifier, a semiconductor device that can carry high current and voltage for many industrial applications. Three-phase SCR bridge rectifiers and inverters are commonly used in induction melting and heating equipment. What causes SCR's and diodes to fail in induction melting units?



I have 2 messages on dash, one read power reduced due to scr system fault and the other reads.. rate in 1 hour and def gauge shows empty. Click to expand Same here, this has happened a few times, I kept driving the truck then after awhile I'd shut the truck off and the derrate would go away, only message would say "scr altered seek".



An SCR warning is due to having a fault code the SCR/DEF system. This can be any of the following:  
Power Reduced due to SCR System Fault with blinking DEF light  
SCR System Altered.  
2016 Kenworth T680 with PACCAR MX13. Nich M. Expert. 20,595 Satisfied Customers.



# POWER REDUCED DUE TO SCR SYSTEM FAULT



Power Reduced due to SCR System Fault with blinking DEF light SCR System Altered. 2016 Kenworth T680 with PACCAR MX13. Nich M. Expert. 20,899 Satisfied Customers. I Have 2018 kenworth Cummins X-15. T680. Haven't tried anything ???



Power Reduced due to SCR System Fault with blinking DEF light SCR System Altered. 2016 Kenworth T680 with PACCAR MX13. Nich M. Expert. 20,865 Satisfied Customers. CEL and MIL are illuminated 2017 kw t680. I'm pretty sure it's because the ???



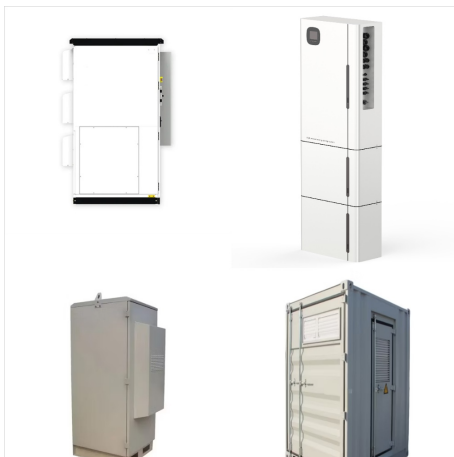
What Is the Significance of a Truck SCR System Fault? If the Selective Catalytic Reduction (SCR) system has a defect, it must be fixed since this would result in significant damage. When someone received a notice that power was limited due to an SCR system malfunction and two check engine lights were illuminated, along with a full DEF tank



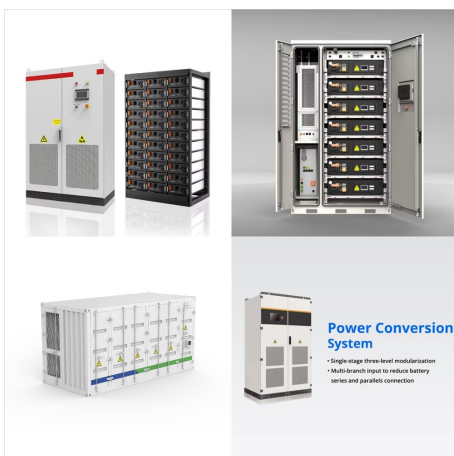
# POWER REDUCED DUE TO SCR SYSTEM FAULT



The "SCR System Fault" warning on the dashboard of Volvo vehicles is something that should not be taken too lightly or ignored. It is usually coupled by a derated engine performance right off the bat.



The SCR system plays a vital role in reducing harmful pollutants from your vehicle's exhaust, ensuring compliance with emission regulations. However, when this system fails, your engine's power output and overall performance suffer.. Your vehicle may experience a decrease in acceleration and responsiveness, affecting its ability to navigate various terrains effectively.



My driver got light on power reduce due to SCR system fault. Peterbilt 579 2016. We stop try to force regen dint work. mobile-tech. Automotive, Medium and Heavy Duty equipment, and Marine Technician with over 20 years of professional experience. 544 Satisfied Customers. Engine derate engine shutdown. Kenworth t-680 2020.



# POWER REDUCED DUE TO SCR SYSTEM FAULT



And power reduce due to scr system fault. 2013 peterbilt 579. Mechanic's Assistant chat. Customer: I have 2013 579 paccar mx13 code 1514. power reduced and my ELD said it's the intake nox sensor 1???. Replaced it but power was. Justin. ASE Med/Heavy Duty Master Technician, Cummins Certified, Paccar MX Certified



Power Reduced due to SCR System Fault with blinking DEF light SCR System Altered. 2016 Kenworth T680 with PACCAR MX13. Nich M. Expert. 20,705 Satisfied Customers. Scr system altered or fault detected. 2015 t680. Kenworth..2015 ???



??? Work through all other fault codes stored in the DDE (EGR, fuel/air, boost control, SCR tanks, etc.). Other faults stored in the DDE not related to SCR can affect the NOx levels in Do not repeatedly replace parts based off the SCR system diagnosis final report (Example: Test plan states to continually replace an NOx sensor that is known



# POWER REDUCED DUE TO SCR SYSTEM FAULT



Customer: Power Reduced due to SCR System Fault with blinking DEF light SCR System Altered  
Mechanic's Assistant: Im sorry to hear about the issue youre experiencing with your trucks SCR system, but our truck Mechanic will be able to help you diagnose and resolve the problem. What is the make and model of your heavy truck? Customer: 2016 Kenworth T680 with PACCAR ???



DEF Doser Valve ??? Regulates the injection of the DEF fluid into your SCR Catalyst. DEF Pump Assembly ??? The heart of your DEF system that pumps the DEF fluid throughout the system. If this fails you will go into a derate immediately; NOx Sensors, both inlet and outlet sensors ??? When the sensor detects much NOx in the exhaust stream, it



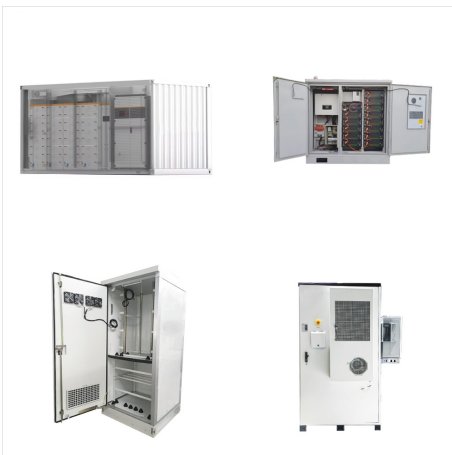
I have 2 messages on dash, one readspower reduced due to scr system fault and the other reads.. rate in 1 hour and def gauge shows empty wireliner20, Mar 2, 2021. wireliner20, Mar 2, 2021 #41. Hakotrucking1905 Thanks this. Trucking Jobs in 30 seconds.



# POWER REDUCED DUE TO SCR SYSTEM FAULT



My driver got light on power reduce due to SCR system fault. Peterbilt 579 2016. We stop try to force regen dint work. mobile-tech. Automotive, Medium and Heavy Duty equipment, and Marine Technician with over 20 years of professional experience. 544 Satisfied Customers. 2011 Peterbilt 348 with a paccar px-8. We are currently



Advantages of SCR Technology SCR Technology. SCR technology offers several benefits that make it a preferred choice for NOx emission reduction: High NOx Reduction Efficiency: SCR systems can reduce NOx emissions by up to 90%, making them one of the most effective technologies available.; Fuel Efficiency: SCR systems improve fuel efficiency by ???



SCR system fault . Hey folks, my 2020 KW T680 popped this code up about a week ago. The shop changed one sensor and all was good for about a week. I got the same alert followed by the lose of power due to it. The truck never went in to derate mode. Anyone have this happen? If so what was the problem.



# POWER REDUCED DUE TO SCR SYSTEM FAULT



Power Reduced due to SCR System Fault with blinking DEF light SCR System Altered. 2016 Kenworth T680 with PACCAR MX13. Nich M. Expert. 20,801 Satisfied Customers. My driver got light on power reduce due to SCR system fault. Peterbilt ???



The problem is it also threw up the Exhaust fluid System fault, speed limited to 50 mph in 50 miles warning. I cleared all the codes, plugged back in the def sender connector, and started the truck. Exhaust fluid system fault remains. I did several key cycles to see if any trouble codes would come back and none did, but the system fault remains.



To fix an SCR system fault, you can follow these expert tips. Start by checking if the AdBlue fluid is low or completely depleted, as this can cause the SCR system to malfunction. Engine derate can occur due to sensor issues causing reduced power or speed. When an engine experiences a derate, it can lead to operational limitations and



# POWER REDUCED DUE TO SCR SYSTEM FAULT



When an SCR system flags a fault code like P20EE00 ??? SCR NOx Catalyst Efficiency Below Threshold, it's signaling a reduction in the system's ability to process NOx effectively. Addressing these fault codes promptly isn't just about compliance; it's crucial for maintaining the engine's power output and fuel efficiency.



Volvo penta's scr system solves emission conundrum. Scr emissions system reduction diesel engine exhaust catalytic selective international systems durastar sensor nox co2 fluid water small need doScr emissions system Scr faultScr system fault explained. volvo 2019. fast and to the point.. Cable system locator fault hv power lv kr eng scr line