

What is electric power steering (EPS)?

So, buckle up and let's get started on solving your EPS problem! The Electric Power Steering (EPS) system in your car is responsible for assisting you in steering by augmenting the force applied to the steering wheel.

What causes EPS steering problems?

Problems in the EPS system usually come down to one of three things: mechanical problems, electrical problems, or sneaky problems that fool you into thinking they're steering-related when they're actually caused by another system or component. And it's relatively simple to figure out which of the three is causing the problem.

Why does my electric power steering system fail?

When it comes to electric power steering (EPS) system failures, control unit issues are often to blame. The control unit is the "brain" of the EPS system, and it's responsible for interpreting sensor data and sending commands to the motor. If there's a problem with the control unit, it can cause the EPS system to fail.

Are You facing problems with your electric power steering system?

If you're facing issues with your Electric Power Steering (EPS) system, it's important to identify the problem and find a solution. Here are some common EPS problems that car owners often encounter: Loss of Power Assist: One of the most common problems with EPS is a sudden loss of power assist.

Can EPS and steering position sensors be replaced individually?

In other configurations, the EPS module, steering torque and steering position sensors can be individually replaced. Although configurations might vary, the basic electric steering system consists of the power steering control module, assist motor, torque sensor and steering position sensor.

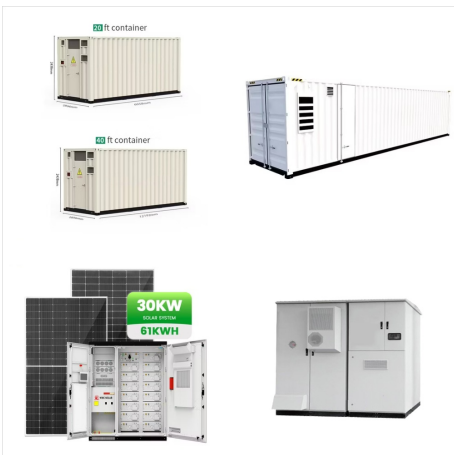
What are the most common Ford electric power steering problems?

Alignment issues: One of the most common Ford electric power steering problems is alignment issues. You can also encounter this issue on other electric power steering vehicles. Alignment issues simply mean situations where the EPS provides more assistive torque and speed in one direction than the other wheel.

# POWER STEERING SYSTEM EPS PROBLEM



Power Steering Sensor Problems. The EPS system uses a number of sensors, such as the steering angle sensor, steering torque sensor, etc. These sensors help determine the required amount of power steering assist from the electric motor. Malfunctioning sensors will send incorrect data to the EPS control module and can lead to a "Service Power



My EPS quit working and the warning light is on. It is also throwing codes 520230 and 31. I have taken it to a dealer and they couldn't get the power steering to connect to digital wrench. I have an appointment at another dealer in a couple weeks. I wondered if anyone with problems with thier EPS could tell me what was done to fix it.



Recognizing Common Power Steering Problems in Your Polaris. When there's a hiccup in your EPS system, you'll feel it. Common power steering problems include a suddenly stiff steering wheel in your Polaris, EPS warning lights on the dashboard, or unusual noises coming from the steering mechanism during operation.

# POWER STEERING SYSTEM EPS PROBLEM



EPS ??? Electric Power Steering is a system that is responsible for creating auxiliary forces acting on the steering actuator (with an intelligent system that uses an electric motor to draw power from the vehicle's electrical system and assist in steering control) in order to maintain or change the direction of vehicle movement.



Hi forum, had my car for nearly 6 years / 68k miles, and am running into my first problem. In summary I need \$5k electronic power steering system replaced - \$4k EPS parts plus \$1k labor - paid by my extended warranty not by Kia. About 5miles / 10mins into a 50mile return journey home with the fam, mild CA temps, coastal national highway road



Honda's electric power steering (EPS) system works by using an electric motor to assist the driver in turning the steering wheel. Unlike traditional hydraulic power steering systems, which use hydraulic fluid to transmit force, EPS systems use an electric motor and sensors to detect the position and movement of the steering wheel.

# POWER STEERING SYSTEM EPS PROBLEM



Electric Power Steering (EPS) Warning Light. The EPS warning light on your Toyota RAV4's dashboard is designed to alert you to potential problems within the electric power steering system. Ignoring this warning light can lead to more significant issues down the road.



Car electronic power steering (EPS) warning sign on the dashboard. The EPS warning light indicates a problem with the Electric Power Steering (EPS) system in your vehicle. There are several potential causes of an EPS warning light, including: Low battery voltage. The EPS system relies on a consistent supply of electrical power from the car battery.



Electrical power steering (EPS) is a result of eliminating the power steering pump and has drastically changed the way we diagnose and repair steering systems. or if it is an actual problem with the system. A very common complaint on Toyota vehicles for example, is that it is easier to turn in one direction than it is in the other.

# POWER STEERING SYSTEM EPS PROBLEM



Holding the steering wheel to full lock on an EPS system could overheat the high-power motor performing the steering movement and put the EPS system into reduced power assist mode until the motor cools off. This is important to know when diagnosing an issue that can't be duplicated. In such cases, consider if the issue customer created.

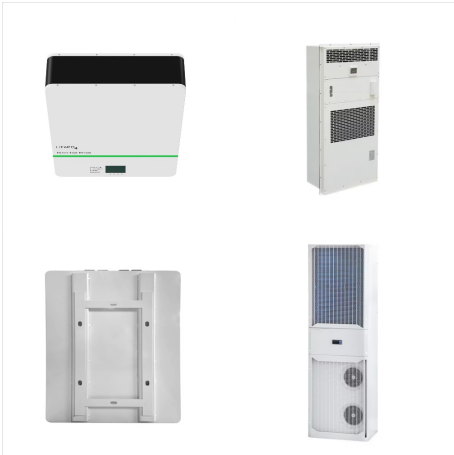


Today's electronic power steering systems may fail due to issues with the mounted electric motor. In particular, excessive heat on the motor is likely to cause the failure modes. Infiltration of the system environment by water, dirt, or other contaminants will also likely lead to ???



I did find this blog entitled Electric Power Steering (EPS) Problems in the Honda Civic and Accord. Questions to be asked: There was a TSB software update for the EPS in 2017. Was the OP's VIN included in that TSB and was EPS ever updated? The issue was "The magnet that controls the Torque sensor output for the power steering system may

# POWER STEERING SYSTEM EPS PROBLEM



Every vehicle I've ever owned has had a single point of failure in the power steering boost system. For vehicles with hydraulic boost something as simple as a failed hose or broken fan belt will stop the boost. and there's a module that controls it called the EPS (Electric Power Steering) module and many have failed over the years on older



To diagnose the faulty EPS control module, you'll need to connect a scan tool to the vehicle's onboard diagnostics (OBD-II) system to retrieve trouble codes and data that can help identify the root cause of the problem.. This step is vital, as it'll allow you to pinpoint the issue and avoid unnecessary repairs. Once connected, the scan tool will retrieve trouble codes, live data, ???

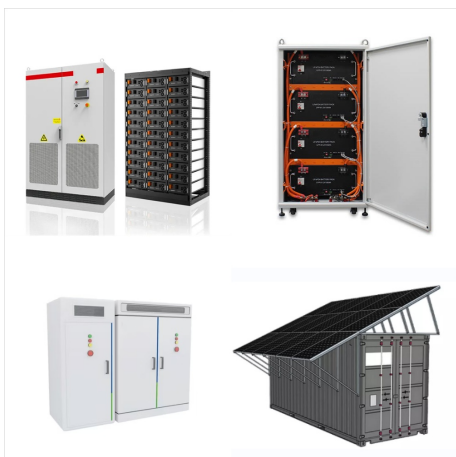


Power steering (EPS) problem. Jump to Latest The notification "check system" appears when I start the engine and there nothing I can do. Sometimes it works fine and when it does it doesn't go off while I'm driving. The moment I turn off the engine and start it back the problem appears. For an hour I'm not able to get it to work anymore.

# POWER STEERING SYSTEM EPS PROBLEM



Power Steering System: Problem: Hydraulic Power Steering: Lack of fluid supply due to power steering fluid leak Failing hydraulic pump Failed steering gear Finally, Electric Power Steering (EPS) systems are becoming more prevalent with each passing year. Electric power steering typically has a steering torque sensor,



Another problem with steering assist being tied to engine and C for the EPS system, rather than the U, V, transistors together, the EPS ECU energizes two phases at . Understanding Toyota Electronic Power Steering (EPS) TOYOTatech October 2020. Understanding Toyota Electronic Power Steering (EPS)



If you repeatedly turn the steering wheel at an extremely low speed, or hold the steering wheel on the full left or right position for a while, the electric power steering (EPS) system heats up. The system goes into a protective mode, and limits its performance. The steering wheel becomes harder and harder to operate.

# POWER STEERING SYSTEM EPS PROBLEM



The steering was stiff and being used to power steering all my short driving life (2 years), I struggled to continue driving and parked it again. This EPS issue appeared suddenly, and the last I had driven the car was about 12 hours prior and all was well.



A malfunctioning power steering pump can be one of the culprits behind a stiff steering wheel in vehicles equipped with electric power steering (EPS) systems. The power steering pump is responsible for generating the hydraulic pressure that assists in turning the wheels. If the pump is not performing properly, it can result in a stiff steering



EPS is a relatively simple system. The steering shaft torque sensor (located in a section of torsion bar in between the steering input and output shafts) is the Power Steering Control Module's (PSCM) main input for determining ???



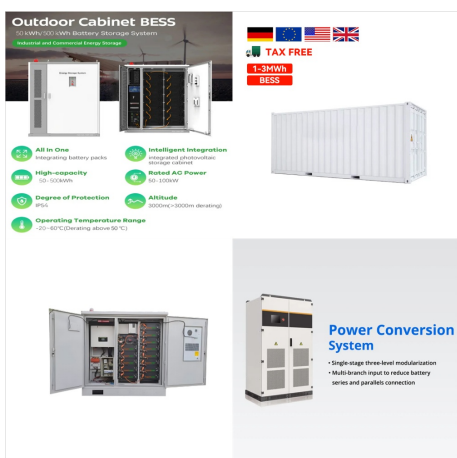
# POWER STEERING SYSTEM EPS PROBLEM



3. Hill start assist problem  
 4. Power steering assist problem  
 5. Emission system problem  
 After multiple attempts, Honda dealership has failed to resolve the issue. First, McLarty Arkansas Honda dealership said the vehicle required a PGM-FI program update. The dealership charged me \$77.44 for the program update.



Photo 1: The electric assist motor is built into the steering rack on this version of Toyota EPS. If you're an import specialist, it's important to know that, although electric power steering (EPS) has been introduced on many 2004-and-later domestic applications, EPS recently began appearing on popular import nameplates like the 2015 Honda S2000 and 2014 and ???



When the control module senses a problem with the power steering system, it illuminates the EPS warning light on the instrument panel and deactivates the system. Electric Power Steering Diagnosis. EPS systems are electric and do not have fluid leaks. Use a scan tool and a multimeter to diagnose codes and problems like excessive resistance