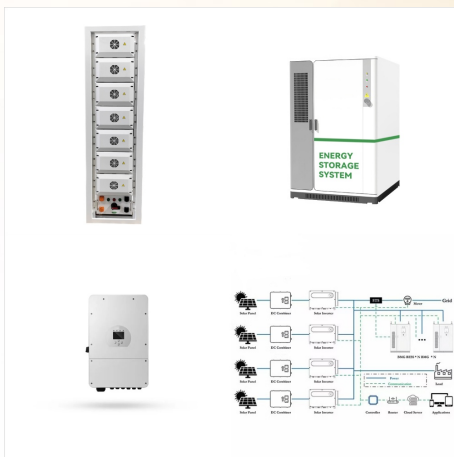




Uflex ZTFTILLERM2 Zero Torque Tiller Steering System How the ZTF Tiller System works: Push or pull on the end of the tiller handle and the patented hydraulic valve opens allowing you to steer. Rest your hand on the tiller and the valve remains closed, locking out the propeller torque and providing comfortable boat operation. HOW THE SYSTEM WORKS:

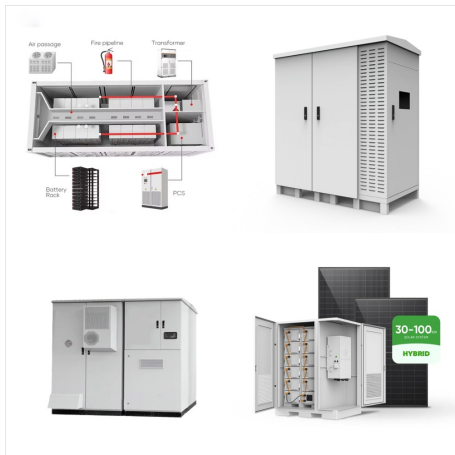


The system, governing the angular movement of front wheels of a tractor is called steering system. This system minimizes the efforts of the operator in turning the front wheels with the application of leverages. Steering clutch 4. steering brake . POWER TILLER It is a prime mover in which the direction of travel and its control for field

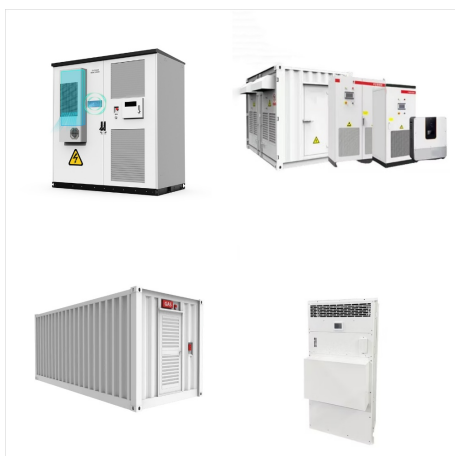


If you're a boating enthusiast, you know that tiller and steering motors are two different types of engines used to power boats. Overall, converting your tiller motor to a steering system can greatly improve your boating experience. With a steering wheel, you will have better control over your boat and navigating will be easier and more

# POWER TILLER STEERING SYSTEM



SYSTEMS Above??? This well-engineered and -installed hydraulic steering system includes an autopilot (evidenced by its rudder-angle indicator), tightly fitted tiller arms, and stout adjustable rudder stops. Hydraulic steering systems operate on simple and easily understood principles. The helm is attached to a hydraulic pump, which usually incor-



Tiller Handles; Steering Systems; Active Trim; From simple to the most advanced, Mercury has a steering system to match the needs of every type of boat and boater. Electro-hydraulic power steering provides smooth, effortless performance and fingertip steering control. Standard on Verado and available for 150-300hp CMS outboards.



Ultraflex has been a pioneer in boat steering systems since 1935, offering cutting-edge technologies designed to enhance the boating experience through Zero Torque Feedback Tiller Steering Systems UC116-I Inboard Cylinder T74NRFC Steering System UC69-I Inboard Cylinder UP56 ??? UP68 Helms Power Assisted Outboard Steering System

# POWER TILLER STEERING SYSTEM **SOLAR**



The MasterDrive??? power assisted outboard steering system delivers fingertip control regardless of speed or torque conditions. MasterDrive??? System Features. Eliminates torque at the steering wheel; Three different selectable levels of power give the ???



Now they have added a new tiller feature, power-steering, so that the largest of the new E-TEC 3-cylinder engines, the 150-hp, can be steered from the transom with finger-touch control. Evinrude includes trim and power steering systems on their E-TEC G2 150-hp engine as standard equipment. The Power Tiller is an accessory that costs an



Tiller steering is a traditional method of controlling a boat, where a tiller arm is connected directly to the rudder. Whether you opt for a hydraulic steering system, electric power steering, or a steering stabilizer, each upgrade offers unique benefits that can take your boating adventures to the next level. Choose the upgrade that best

# POWER TILLER STEERING SYSTEM **SOLAR**



Power Transmission in Power Tiller: For operation of power tiller, the power is obtained from the I.C. engine, fitted on the power tiller. The engine power goes to the main clutch with the help of belt or chain. From main clutch, the power is divided in two routes, one goes to transmission gears, steering clutch and then to the wheel.



Neutralize propeller torque with the ZTF Tiller! This unique tiller handle contains a hydraulic valve and cylinder that virtually locks out propeller torque while not actively changing the direction of the boat. Rated for Mercury engines up to 150HP, this system comes complete with the Mercury Big Tiller, the hydraulic valve and cylinder.

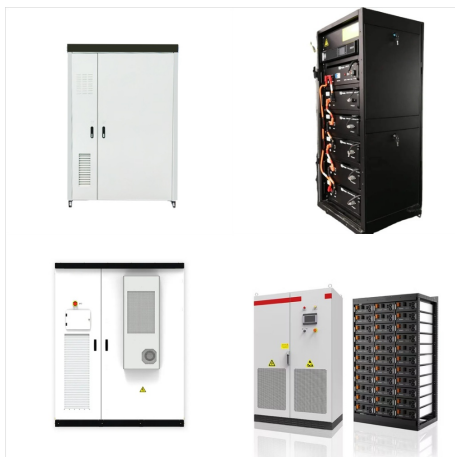


Principals of Merten Marine Ltd were involved in the design and marketing of the Power Tiller Steering and Titan Steering systems. The Power Tiller Steering system is available for Mercury outboards through Mercury Marine. The Titan Steering system is available through Uflex.





The Yamaha Outboard Y1 Zero Torque Feedback steering system comes complete in a box and ready for install on your 90-130HP Yamaha Outboard. With all of the features the ZTF Tiller offers, you'll be asking yourself why you waited so long to get one installed on your Tiller Steered Yamaha Outboard.



Uflex tells me they have a number of guys switching from the power tiller steering system to something called the Zero Torque Tiller Steering system for this exact reason. It's not a powered system, so you're using your arm muscles to steer the tillered motor, but when you let go (handle goes back to a neutral position), it hydraulically locks



Standard Tiller. More aggressive and designed with performance in mind, the standard tiller feels like a motorcycle or bicycle handgrip. You'll find the standard tiller on a few Pride Mobility models, for example the Raptor outdoor scooter. The Raptor is Pride's fastest mobility device and is built for outdoor use almost exclusively.



The patient is able to safely transfer to and from a POV, operate the tiller steering system, and maintain postural stability and position while operating the POV in the home. b. They must have adequate mental capabilities (eg, cognition, judgment) and physical capabilities (eg, vision) sufficient for safe mobility in the home.

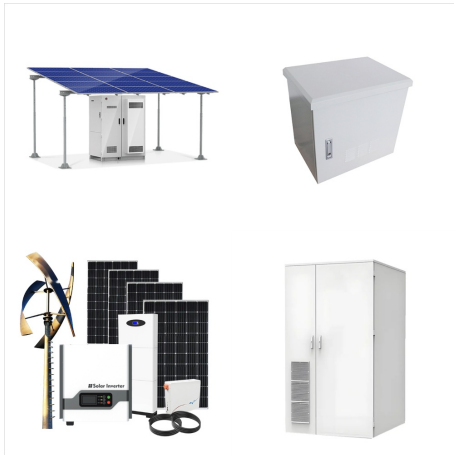


Trailer mounted steering for power tiller ??? trailer system . Special features ??? Avoids the operator getting down and turn the power tiller trailer system ??? All the control operations well within the reach of the operator ??? Shorter turning radius, enabling the operator to take turns even in very narrow space



In two-line and three-line manual hydraulic steering systems, the helmsperson applies the energy by turning the wheel. With power hydraulic systems, either there is a power-assist module installed inline with the hydraulic lines or turning the wheel sends an electrical signal to a pump, which then applies the force.

# POWER TILLER STEERING SYSTEM **SOLAR**



When we talk about a helm pump, we must also talk about both passive and power steering as that is the part of the system that interacts most with YOU and the rest of the steering system. Most passive (non-power assisted) systems are set up to be between 5 & 10 turns lock-to-lock on the steering wheel and if we translate into to mechanical



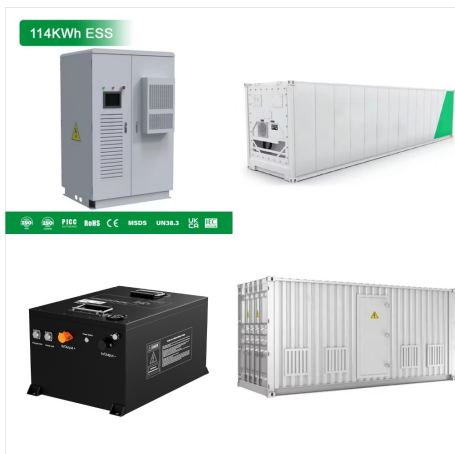
Established in 1989 Uflex USA is a leader in steering and control systems for the marine industry. With full manufacturing capabilities in Sarasota, Florida, Uflex USA can support all sectors of the marine industry. As an affiliate of the Ultraflex Group, Uflex USA has tremendous resources to draw upon for new product development in hydraulics



List of Kobelt products included in hydraulic & electronic steering systems. Products. Controls. Electronic; Push Pull; Pneumatic; Kobelt has recently designed a line of tiller models to be used in conjunction with our newest The 7243 is an essential component of power steering systems 7144 - Single Solenoid Adapter Base. OBSOLETE



Full tiller one way and rudder the opposite way can move the steering even without hydraulic power Full rudder action can overcome to some extent our system implementation. It is possible to move the nose wheel even with no hydraulic power, as MSFS will turn the wheel even when our internal implementation is not moving at all.



Comfort and Convenience: Wheel steering is much more comfortable and convenient to use than a tiller. You can sit in a comfortable position and steer with one hand while you navigate with the other. Improved Handling: Wheel steering provides more precise control, especially in rough waters or when you need to make quick turns. This is because the wheel ???



The Tiller Assist system uses a normally open solenoid to remove tiller feedback on demand. It is operated by a momentary foot switch. When constant pressure is applied to the foot switch the Tiller Assist system is locked removing all tiller handle feedback and torque. The moment you remove pressure from the switch the tiller handle is freed





power tiller steering System New Model and Driving  
Easy Best Video Power tiller Smart Driving System  
??Interesting  
Videos?? <https://youtu />



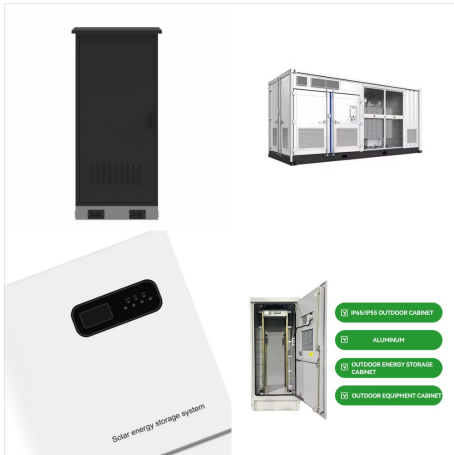
The Uflex Zero Torque Feedback Tiller Steering  
System (No Handle) is designed to lock out torque  
while a boat is not actively being steered and  
reduce user fatigue. Hoses and Bracket for the  
New M2 Tiller by Mercury Marine Tiller Zero Torque  
Steering. For use with Mercury Tiller 40 hp to 60 hp  
EFI, from 2006 to date and 75 hp to 115 hp EFI



This system included rotary vane actuators,  
hydraulic power units, storage tanks, and essential  
controls such as follow-up steering control,  
autopilot, and rudder angle indicators. Tiller  
steering systems, in particular, are renowned for  
their direct connection to the rudder, offering precise  
control and immediate responsiveness, which is

# POWER TILLER STEERING SYSTEM **SOLAR®**

---



The ZTF Tiller System must be used combined with Yamaha(R) outboard engines of 90-115-130 HP produced from 2015 to date, and engines of 150-175-200 HP- models 2.7L F150 Mechanical, VF150 V MAX SHO, F175, VF175 V MAX SHO, and F200 Mechanical - and must be assembled only on boats specifically designed and suitably equipped for being steered with the tiller handle.