

What are the different types of powersafe® E Batteries?

Offering market-leading performance for power industry applications, PowerSafe® E batteries are available in two series: EA-M (antimony alloy) and EC-M (calcium alloy).

What makes powersafe EA-m a good battery?

PowerSafe EA-M batteries with antimony alloy plates deliver maximized performance in cycling applications, allowing the battery to tolerate high temperatures. Extra thick positive grids make the EA-M series one of the industry's most rugged battery.

Who owns South Georgia and the South Sandwich Islands?

The United Kingdom claimed sovereignty over South Georgia in 1775 and the South Sandwich Islands in 1908. The territory of "South Georgia and the South Sandwich Islands" was formed in 1985; previously, it had been governed as part of the Falkland Islands Dependencies.

What happened to South Georgia and the South Sandwich Islands?

In 1985, South Georgia and the South Sandwich Islands ceased to be administered as a Falkland Islands Dependency and became a separate territory. The King Edward Point base, which had become a small military garrison after the Falklands War, returned to civilian use in 2001 and is now operated by the British Antarctic Survey.

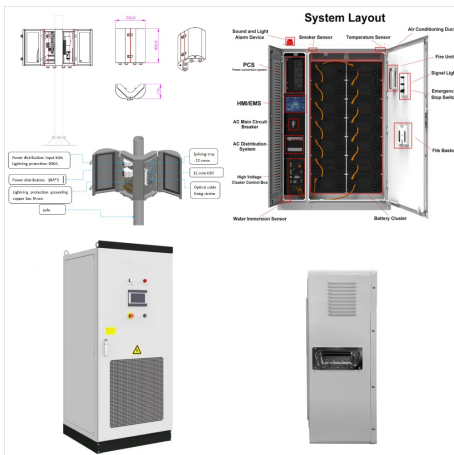
Is EnerSys a non-hazardous cargo?

Approved as non-hazardous cargo for ground, sea and air transportation in accordance with US DOT Regulation 49 CFR and ICAO and IATA Packing Instruction 806. Please see our SDS for complete details at 8hr. 10hr. Rate Rate 1.75Vpc 1.80Vpc @77°F @68°F @169;2017 EnerSys. All rights reserved.

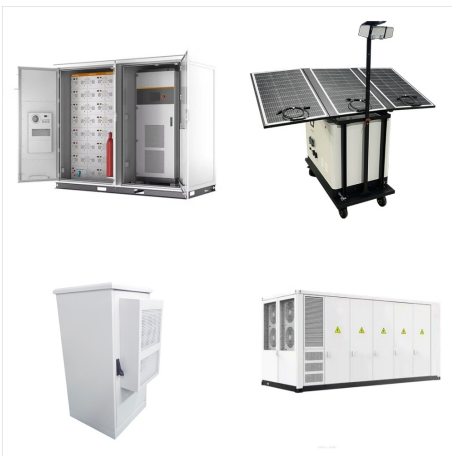
POWERSAFE ENERSYS SOUTH GEORGIA AND SOUTH SANDWICH ISLANDS



1 South Georgia Island is the only inhabited island, with the summer-only settlement of Grytviken, and the only one regularly visited by cruise ships. Minor islands are ranged along its north coast ??? those visited by cruises are Willis, Bird, Albatross and Prion, and Cooper. The south coast is exposed to raging winds and waves and is seldom visited ??? Annenkov is the only large island ???



Can you complete the fact file for the South Georgia and South Sandwich Islands? By Manicgamer04.
3m. 10 Questions. 40 Plays 40 Plays 40 Plays.
Comments. Comments. Give Quiz Kudos. Give Quiz Kudos-- Ratings. PLAY QUIZ Score.
Numerical. Percentage. 0/10. Timer. Default Timer.
Practice Mode. Quiz is untimed.



Closeup map of the South Sandwich Islands NASA satellite photograph of Montagu Island. The South Sandwich Islands comprise 11 mostly volcanic islands (excluding tiny satellite islands and offshore rocks), with some active volcanoes. They form an island arc running north???south in the region 56?18"???59?27"S, 26?23"???28?08"W, between about 350 and 500 mi (300 and 430 nmi; ???

POWERSAFE ENERSYS SOUTH GEORGIA AND SOUTH SANDWICH ISLANDS



South Georgia & the South Sandwich Islands are only accessible by sea. There is no visitor accommodation ashore, therefore most people visit by cruise ship or yacht. All visits require a visit permit. Visit permit applications for both commercial and private vessels are submitted by the vessel owners or operators. Individual passengers don't

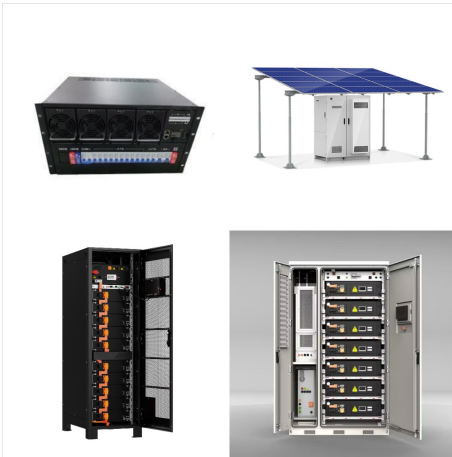


Together, South Georgia and the South Sandwich Islands form part of the Scotia Arc, which extends from the tip of South America to Antarctica (and also includes the South Shetland and South Orkney Islands, though these are not part of the British dependency). The island of South Georgia is 105 mi (170 km) long, and about 25 mi (40 km) wide.



The ultimate goal of the Argentinian forces was to annex the South Sandwich Islands, South Georgia, and the Falklands. Despite these plans, however, the British moved in to re-take the territory, and on June 20, 1982, the British were successful in defeating the invading Argentine forces. By 1985, both South Georgia and the South Sandwich

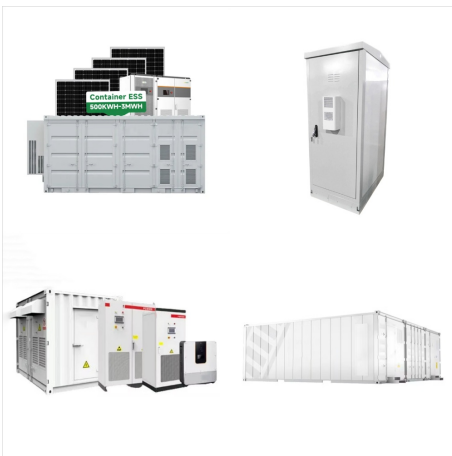
POWERSAFE ENERSYS SOUTH GEORGIA AND SOUTH SANDWICH ISLANDS



The Antarctic Treaty of 1962 resulted in a separation of the British Antarctic Territory from the UK Dependencies. South Georgia then received its first stamps. In 1985 the Falkland Islands Dependencies ceased to exist and South Georgia & the South Sandwich Islands came into existence as a UK overseas territory.

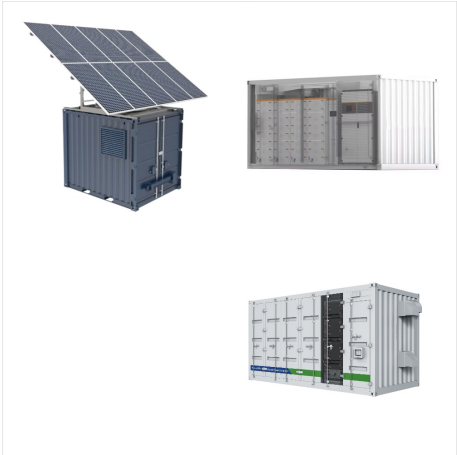


South Georgia and South Sandwich Islands are to become a Terrestrial Protected Area which would further protect the most diverse populations of seabirds and marine mammals on Earth, including 25% of the world's gentoo penguins. [r/UpliftingNews](#). [r/UpliftingNews](#).



The future marine protection of South Georgia and the South Sandwich Islands has been a long-standing campaign for the APPG and our associate members, including the Pew Trusts, and featured in our recent "Keeping 1.5 alive" report, which sets out nine priorities for the forthcoming COP28 summit, which begins next week.

POWERSAFE ENERSYS SOUTH GEORGIA AND SOUTH SANDWICH ISLANDS



One of the few markers of human life in South Georgia and the South Sandwich Islands is the Norwegian Lutheran church in Grytviken. This neo-Gothic structure was constructed by whalers, led by explorer Carl Anton Larsen, during 1912???1913. The church was consecrated on Christmas Day in 1913, and its graveyard has sixty-four graves, including



? 1/4 ?? 1/4 ? South Georgia and the South Sandwich Islands, SGSSI ? 1/4 ???? , ???

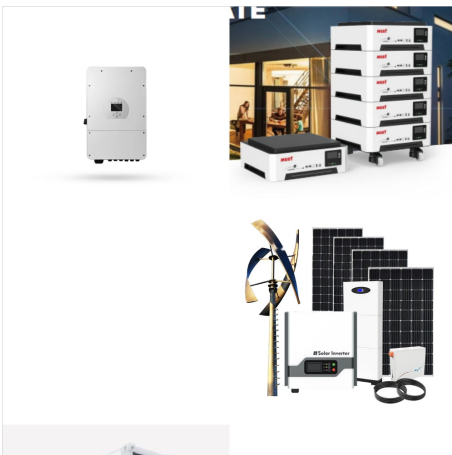


Media in category "Maps of South Georgia and the South Sandwich Islands" The following 22 files are in this category, out of 22 total. Barff Peninsula - South Georgia.svg 182 x 121; 2.28 MB. Bayly Island - Clerke Rocks.svg 307 x 224; 1.16 MB. Clerke Rocks - South Georgia.svg 299 x 193; 2.2 MB.

POWERSAFE ENERSYS SOUTH GEORGIA AND SOUTH SANDWICH ISLANDS



Revel in the immense vastness and immeasurable beauty of an Antarctica Cruise as you float past extraordinary landscape after extraordinary landscape on your journey to South Georgia Island from Argentina. Push your adventure-loving spirit out of its comfort zone as you take in the sea's icy surface and marvel at the towering glaciers that rise above you from aboard the ???



The ultimate goal of the Argentinian forces was to annex the South Sandwich Islands, South Georgia, and the Falklands. Despite these plans, however, the British moved in to re-take the territory, and on June 20, 1982, ???



? 1/4 ?? 1/4 ? South Georgia and the South Sandwich Islands, SGSSI ? 1/4 ???? ,??? „3592 ???

POWERSAFE ENERSYS SOUTH GEORGIA AND SOUTH SANDWICH ISLANDS



One of the few markers of human life in South Georgia and the South Sandwich Islands is the Norwegian Lutheran church in Grytviken. This neo-Gothic structure was constructed by whalers, led by explorer Carl Anton Larsen, during ???



Location: Shag Rocks general pelagic--over 2 miles offshore South Georgia and South Sandwich Islands. Great Shearwater *Ardenna gravis* # Count: 1. Date: 11 Dec 2024. Observer: Letitia Lussier. Location: Shag Rocks general pelagic--over 2 miles offshore South Georgia and South Sandwich Islands.



Like South Georgia, the South Sandwich Islands also support globally m Height of the territorys highest peak, Mount Paget. ~60% Proportion of the territory under permanent snow/ice cover. 6 1: Natural and cultural heritage significant proportions of certain species, for example, Antarctic fulmars (*Fulmarus glacialis*: LC)

POWERSAFE ENERSYS SOUTH GEORGIA AND SOUTH SANDWICH ISLANDS



(South Georgia and South Sandwich Islands)???,1982???



South Georgia and The South Sandwich Islands :
Stamps : Years List : Colnect. Buy, sell, trade and exchange collectibles easily with Colnect collectors community. Only Colnect automatically matches collectibles you want with collectables collectors offer for sale or swap. Colnect collectors club revolutionizes your collecting experience!



EnerSys(R) PowerSafe(R) OGi batteries feature Vented Lead Acid (VLA) technology ideal for utility market applications. OGi's rod plate composition offers a high energy density design providing a space-efficient footprint savings and long ???

POWERSAFE ENERSYS SOUTH GEORGIA AND SOUTH SANDWICH ISLANDS



Krill at South Georgia & the South Sandwich Islands are not self-sustaining but dependent on the northerly movement of krill in the currents of the Southern Ocean from their spawning grounds under the ice in the Antarctic Peninsula and Weddell Sea. Krill reproduction is highly dependent on sea ice conditions and hence environmental factors.



The South Georgia and South Sandwich Islands Marine Protected Area (SGSSI-MPA) is one of the world's largest MPAs, covering an area of 1.24 million km² (an area 5 x larger than the UK). It was established in 2012 with the aim of conserving the rich marine biodiversity within the Territory's maritime zone and provides a framework for our



A wet day is one with at least 0.04 inches of liquid or liquid-equivalent precipitation. The chance of wet days in Grytviken varies throughout the year. The wetter season lasts 5.9 months, from November 15 to May 13, with a greater than 33% chance of a given day being a wet day. The month with the most wet days in Grytviken is February, with an average of 12.2 days with at ???

POWERSAFE ENERSYS SOUTH GEORGIA AND SOUTH SANDWICH ISLANDS



British overseas territory in the Southern Atlantic Ocean. This page was last edited on 27 November 2024, at 11:44. All structured data from the main, Property, Lexeme, and EntitySchema namespaces is available under the Creative Commons CC0 License; text in the other namespaces is available under the Creative Commons Attribution-ShareAlike License; ???



South Georgia and the Sandwich Islands are UK Overseas Territories. And in 2022 the Government designated them as Protected Areas for better conservation and to keep tourism responsible too. Secret Atlas is committed to sustainable travel and limiting our impact on the places we visit. We also follow Arctic Expedition Cruise Operators (AECO