

What is EnerSys powersafe SBS 40?

Terminal design - leak resistant patented dual seat terminal design The EnerSys PowerSafe SBS 40 batteries provides a superior range of valve-regulated batteries with an extended service life in energy dense configurations.

What is the maximum operating temperature of a powersafe SBS battery?

The advanced thin plate, pure lead technology and unique manufacturing methods, used by EnerSys, make PowerSafe SBS batteries the choice for long and trouble-free service. The maximum operating temperature of the PowerSafe SBS J series battery can be extended to 176°F (80°C) via an optional metal jacket.

What is a powersafe SBS battery?

PowerSafe SBS batteries have been developed to retain the long float life characteristics associated with Thin Plate Pure Lead (TPPL) Technology and has the added capability to deliver high performance in harsh applications where cyclic duty predominates.

Does powersafe SBS accept unlimited current during recharge?

Due to the very low internal resistance, PowerSafe SBS monoblocs and cells will accept unlimited current during recharge but for cost and practical purposes in float applications where recharge time to repeat duty is not critical, the rectifier current can be limited to the load plus 0.1C 10 Amps.

Where are powersafe batteries marketed?

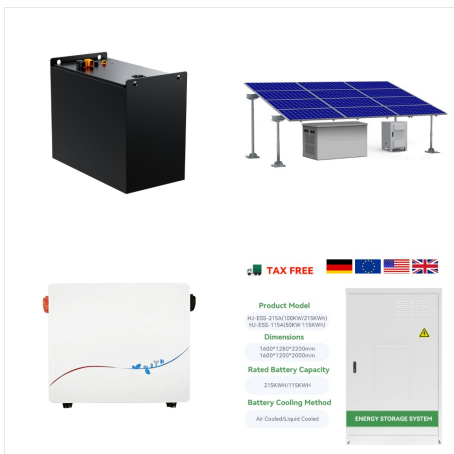
PowerSafe products are marketed under the SuperSafe brand in the following specific countries - India, Indonesia, Malaysia, Singapore, Thailand, Australia and New Zealand. Featuring advanced Thin Plate Pure Lead (TPPL) technology, PowerSafe SBS batteries deliver long life, high energy density and superior shelf life for telecommunications.

What temperature should a powersafe SBS monobloc be operated at?

However, PowerSafe SBS monoblocs and cells can be operated in the temperature range -40°C to +50°C. In order to maintain mechanical integrity of the plastic components, the battery temperature in operation should not exceed +50°C. Monoblocs and cells lose capacity when standing on open-circuit because of parasitic chemical reactions.



PowerSafe SBS batteries are manufactured to the highest international standards and are ideal for reliable use in all wireless and fixed-line communication applications. PowerSafe SBS batteries are also widely used in cable TV, emergency lighting, power generation and offshore applications. The PowerSafe SBS battery range is available in several



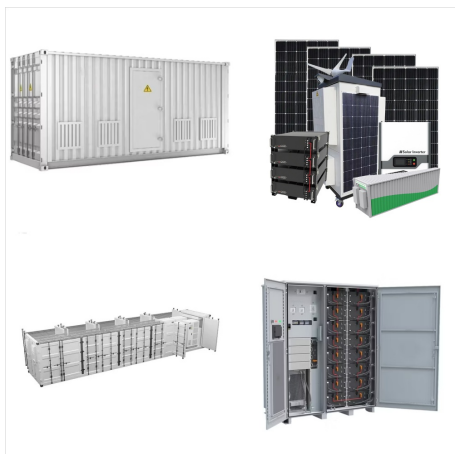
PowerSafe SBS-40 batteries are designed to cope with elevated temperatures and harsh environments. The advanced thin plate, pure lead technology and unique manufacturing methods, used by EnerSys(R), make PowerSafe SBS batteries the choice for long and trouble-free service.



PowerSafe SBS-40 batteries are designed to cope with elevated temperatures and harsh environments. The advanced thin plate, pure lead technology and unique manufacturing methods, used by EnerSys(R), make PowerSafe SBS ???



Hi-Tech Battery Solutions offers the OEM EnerSys Powersafe SBS-40 Top Terminal batteries comes with a free five-year replacement warranty. Get your premium quality 12 volt pure lead batteries today, shop now!



Due to the very low internal resistance, PowerSafe(R) SBS monoblocs and cells will accept unlimited current during recharge but for cost and practical purposes in float applications where recharge time to repeat



The PowerSafe??? SBS range utilizes unique and proven technology to provide a superior range of valve regulated batteries with an extended service life in compact and energy dense con???gurations.



PowerSafe SBS batteries are manufactured to the highest international standards and are ideal for reliable use in all wireless and fixed-line communication applications. PowerSafe SBS batteries are also widely used in cable TV, emergency lighting, power generation and offshore applications.



sbs b8 6 12 31 31 11.0 280 3.82 97.0 6.26 159 22.7
10.3 1270 10.0 m8 f 0.37 1.42 4.05 1.84 0.11 0.40
1.61 0.73 15.6 7.08 sbs b10 6 12 38 38 11.0 280
3.82 97.0 7.24 184 26.0 11.8 1390 9.00 m8 f 0.48
1.80 5.15 2.34 0.13 0.51 2.04 0.93 17.7 8.03