

What are the best Tesla Powerwall alternatives?

But limited availability means getting your hands on one could take a while. Some of the most popular Tesla Powerwall alternatives are the Enphase IQ battery, the sonnenCore, Generac PWRcell, LG Energy's RESU Prime, and the Panasonic EverVolt. In fact, many solar installers actually prefer these brands over the Tesla Powerwall.

Which Powerwall alternative is best?

Our chosen Powerwall alternative from Enphase comes in the form of its 10 kWh IQ Battery offering. While its usable capacity (10.08 kWh) and continuous power rating (3.84 kW) don't quite match up to the Tesla Powerwall's -- 13.5 kWh and 5.0 kW -- it does have a 6% higher round-trip efficiency. 3. Fortress eVault Max (18.5 kWh)

What is a Tesla Powerwall?

The Tesla Powerwall is designed to be easy to use and to be a sleek addition to your home. Image courtesy of Tesla, Inc. Since the release of the first Powerwall in 2015, Elon Musk's company Tesla has worked diligently on refining and improving its energy storage solutions.

What are the different types of Tesla Powerwall?

There are currently three variations of Powerwall in the market: Powerwall 2, Powerwall Plus, and Powerwall 3. Check the comparison table for vital Tesla specs. This information will be crucial for you when comparing Powerwall alternatives. The main drawback of these panels is their price.

How much does a Tesla Powerwall cost?

If you purchase a Powerwall with a Tesla solar panel or solar roof system, the price will be closer to \$11,500. With Tesla solar panels costing about \$2.50 per watt, you can expect a full hybrid solar system from the brand to run about \$26,500. It's very simple to use, with an app that controls how and when energy flows to and from the battery.

What is better Tesla Powerwall or EVault Max?

While its usable capacity (10.08 kWh) and continuous power rating (3.84 kW) don't quite match up to the

POWERWALL ALTERNATIVES

TUVALU



Tesla Powerwall's -- 13.5 kWh and 5.0 kW -- it does have a 6% higher round-trip efficiency. 3. Fortress eVault Max (18.5 kWh) Fortress Power is a U.S. company manufacturing domestic energy storage solutions based on LFP batteries.



Ultimately, if the powerwall lasts at least ~12 years or so, it will have been break even with a generator, and approaches "free" @ 16 years. I really should all sum this up to say, if you are in the market for blackout protection, solar + powerwalls are a fantastic pick. If you are in it to try to make money, powerwall is not the pick.



Diverse Alternatives: There are several viable alternatives to the Tesla Powerwall, including the EcoFlow Delta Pro Ultra, EcoFlow Delta Pro 3, EcoFlow Power Kits, Anker SOLIX F3800, and Mango Power E Home Backup. Each offers unique features catering to different needs and preferences.

POWERWALL ALTERNATIVES TUVALU



Enphase IQ batteries, Generac PWRcell, sonnenCore, and LG Energy's RESU Prime are among the most popular options for the Tesla Powerwall. Each of these batteries is associated with its unique sets of pros and cons. So, there are cases when solar installers, over the Tesla Powerwall, prefer to go for these brands. The Tesla Powerwall

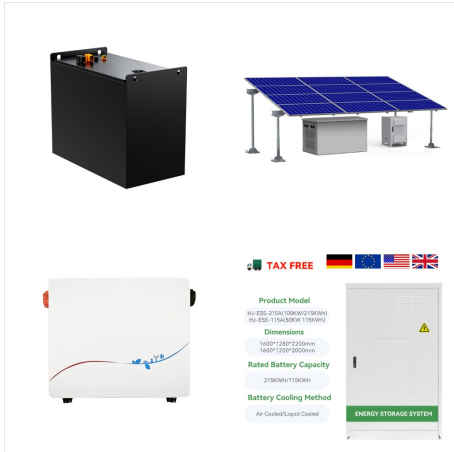


By coupling with SolarEdge Energy Hub solar inverter, the LG RESU 16H is an excellent alternative to Tesla Powerwall. When combined with the Solar Edge 6kW inverter, the LG RESU 16H is a complete solution for your plug-and-play solar energy store. You will not need extra tools to connect to the solar panel compared to the Tesla Powerwall.



If you compare the 18 kilowatt-hours version (6 battery modules) to Tesla's Powerwall 2 that has 13.5 kilowatt-hours, the comparison is as follows: Generac a?? 9-kilowatt max continuous power and 50A motor starting current; Powerwall 2 a?? 5-kilowatt a?|

POWERWALL ALTERNATIVES TUVALU



That said, installing a Tesla Powerwall could cost between \$12,000 and \$16,000, so it may not be the most cost-effective battery for your solar system. And it might not even be the best in terms of performance. There are quite a few Tesla a?|



Enphase IQ batteries, Generac PWRcell, sonnenCore, and LG Energy's RESU Prime are among the most popular options for the Tesla Powerwall. Each of these batteries is associated with its unique sets of pros a?|

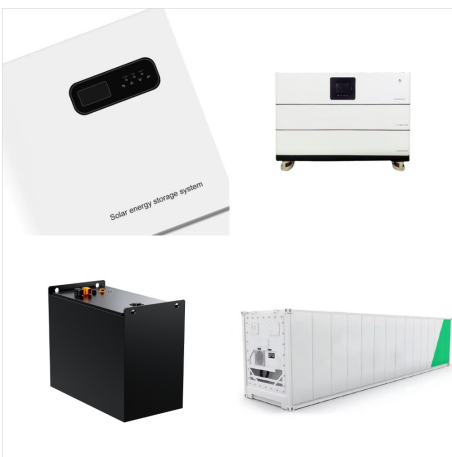


The Powerwall is a single-phase, AC-coupled battery 1, so this guide will focus on single-phase AC-coupled alternatives to the esteemed Powerwall. For home energy storage, this means the battery is charged from a?|

POWERWALL ALTERNATIVES TUVALU



If you have Tesla panels, those Powerwall alternatives may not suit you. Panasonic EverVolt is suitable for homeowners looking for a scalable and powerful battery system with a modular design. Franklin battery is a great a?|



The Tesla Powerwall is a popular home battery, but there are alternatives. Other brands like LG Chem, Sonnen, Enphase, and Generac offer similar solutions. EcoFlow has portable power stations, not traditional home battery banks. Some homeowners use multiple battery banks connected in series or build DIY solutions.



If you have Tesla panels, those Powerwall alternatives may not suit you. Panasonic EverVolt is suitable for homeowners looking for a scalable and powerful battery system with a modular design. Franklin battery is a great Tesla Powerwall alternative for people who want to build an extra-capacity system for their home or small business.

POWERWALL ALTERNATIVES TUVALU



The Top 4 Alternatives to the Tesla Powerwall in 2024. LG Chem RESU Prime. The LG Chem RESU Prime series packs serious power into a sleek, compact design, making it a top choice for homeowners with varied energy needs. With options like the 10H Prime, which provides 9.6 kWh of storage,



As the demand for sustainable and reliable home energy solutions grows, the market for home backup systems has expanded beyond the well-known Tesla Powerwall. While the Powerwall has set a high standard, various alternatives offer unique features and advantages. This article delves into the best Tesla Powerwall alternatives, exploring their specifications, a?



Manufacturers of Powerwall alternatives struggled to be heard last week as the mainstream media went crazy over the beautifully stage managed, first residential Powerwall battery storage installation in Australia. The mood was one of expectation and excitement a?? mixed with a tinge of dread in fossil fuel circles a?? as it heralded the advent of affordable home a?|

POWERWALL ALTERNATIVES TUVALU



That said, installing a Tesla Powerwall could cost between \$12,000 and \$16,000, so it may not be the most cost-effective battery for your solar system. And it might not even be the best in terms of performance. There are quite a few Tesla Powerwall alternatives that give this popular battery a run for its money.



Would be nice if that became more mainstream, in which case I wouldn't need a separate battery like the powerwall. I've been surprised at the price fluctuations listed for the powerwall. some articles say \$3000, others say \$11000, Tesla's website seems to currently indicate \$7000. That \$3k price point sounded nice, but \$7k is too steep



In this extensive guide, we will delve into what the Tesla Powerwall is, its advantages and disadvantages, and explore the world of Tesla power wall alternatives, highlighting their pros and cons. We will also guide a?|

POWERWALL ALTERNATIVES TUVALU



Looking for whole house power backup (2 ACs etc) solution that could work, seems Tesla PowerWall might be good option at least for <14-15 hour outages that could be installed completely indoors. One quirk is that our a?|



The Tesla Powerwall is a convenient option that could make your home energy reliant, but it could be expensive to install. This is because if you're buying the Tesla Powerwall lithium-ion battery from Tesla, it must be accompanied by a solar roof or a solar panel.. More succinctly, a Tesla Powerwall 13.5kWh lithium-ion battery will cost you about \$10,500, and an a?|



Tesla Powerwall Alternatives Table of Contents It is said that successful people (read: companies) do not do different things; they just do the same things differently. Tesla might not have invented the electric car or batteries, but it certainly came up with ways to improve these technologies and their respective business models. In just a a?| Best Tesla Powerwall a?|

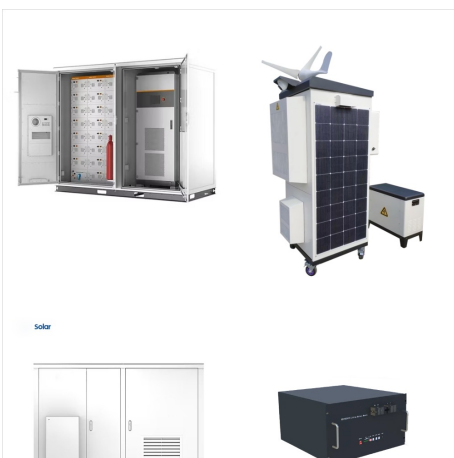
POWERWALL ALTERNATIVES TUVALU



If you compare the 18 kilowatt-hours version (6 battery modules) to Tesla's Powerwall 2 that has 13.5 kilowatt-hours, the comparison is as follows: Generac a?? 9-kilowatt max continuous power and 50A motor starting current; Powerwall 2 a?]

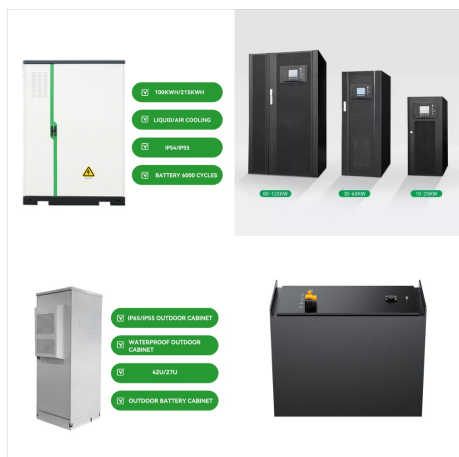


What are the best Tesla Powerwall alternatives? In 2015, Tesla paved the way for energy self-consumption with their Powerwall a?? the first home energy storage system (ESS). A plug-and-play solution that stores the energy produced by solar panels into rechargeable lithium batteries that you can use at any time in your home.



In this extensive guide, we will delve into what the Tesla Powerwall is, its advantages and disadvantages, and explore the world of Tesla power wall alternatives, highlighting their pros and cons. We will also guide you on how to choose the best alternative and discuss the Huntkey Energy Storage System as a noteworthy contender.

POWERWALL ALTERNATIVES TUVALU



Some of the most popular Tesla Powerwall alternatives are the Enphase IQ battery, the sonnenCore, Generac PWRcell, LG Energy's RESU Prime, and the Panasonic EverVolt. In fact, many solar installers actually prefer these brands over the Tesla Powerwall.



Here are some of the best Tesla Powerwall alternatives that deliver excellent performance and value for homeowners looking to maximize their solar energy storage. 1. LG Chem RESU Prime. One of the most popular Tesla Powerwall alternatives is the ****LG Chem RESU Prime****. Known for its reliability and efficiency, this battery system is trusted by



The Powerwall is a single-phase, AC-coupled battery 1, so this guide will focus on single-phase AC-coupled alternatives to the esteemed Powerwall. For home energy storage, this means the battery is charged from 230 Volts AC, and discharges 230 Volts AC.

POWERWALL ALTERNATIVES TUVALU



Powerwall Is Single-Phase, AC-Coupled. There are so many battery configurations it's easy to be confused. There are 3-phase batteries, single-phase batteries, managed, unmanaged, DC & AC-coupled. The Powerwall is a single-phase, AC-coupled battery 1, so this guide will focus on single-phase AC-coupled alternatives to the esteemed Powerwall.