



Did the postal service change the shipping standards for lithium batteries?

The Postal Service announced these revisions via a Federal Register notice titled "Revision to Mailing Standards for Lithium Batteries," which was published on July 26, 2017 (82 FR 34712-34715).

Can a lithium battery be used on a mailpiece?

The Postal Service clarifies that labels commonly used with other transportation providers are not permitted on mailpieces containing lithium batteries installed in equipment, when these mailpieces are intended for international mail.

Do I need a DOT-approved lithium battery handling label?

n Mailers may use a DOT-approved lithium battery handling label, in domestic air or surface transportation, to meet these marking requirements, provided all required elements are included. n An indication that the package contains "lithium metal" or "lithium-ion" cells or batteries, as appropriate;

Are lithium-ion and lithium polymer batteries allowed in Postal Service Air-eligible products?

n Generally prohibit UN3480 lithium-ion and lithium polymer batteries in Postal Service air-eligible products.

How do you mark a mailpiece with a lithium battery?

Except for mailpieces containing button cell batteries properly installed in the equipment they are intended to operate, mailpieces containing lithium metal batteries must be rigid, sealed, and of adequate size, so the mark can be affixed to the address side without the mark being folded.

Do I need DOT approved lithium battery markings?

n Require DOT-approved lithium battery markings on all mailpieces containing lithium cells or batteries contained in equipment when there are more than two mailpieces in a single consignment in domestic mail. n Limit a single consignment to two mailpieces containing lithium batteries for international and APO/FPO/DPO mail.

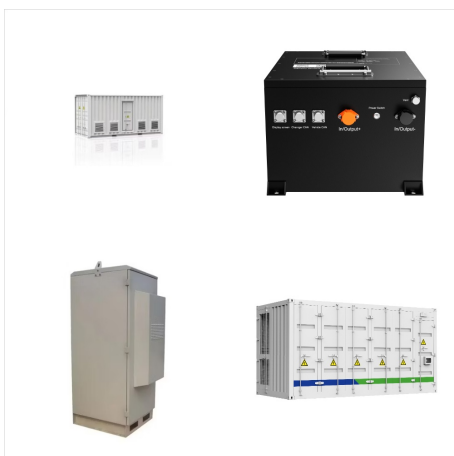
PRINTABLE USPS LITHIUM BATTERY LABEL



4 ??? Lithium metal (LiM) ??? are generally non-rechargeable (primary, one-time use). ??? have a longer life than standard alkaline batteries ??? are commonly used in hearing aids, wristwatches, smoke detectors, cameras, key fobs, children's toys, etc. LITHIUM BATTERY TYPES There are many different chemistries of lithium cells and batteries, but for transportation purposes, all lithium ???



Lithium batteries are dangerous goods, and all of the regulatory requirements must be complied with, as set out in the Lithium Battery Shipping Regulations. In the United States, failure to comply with these regulations can result in a civil penalty of up to \$27,000 per offence (LBSR 1.3).

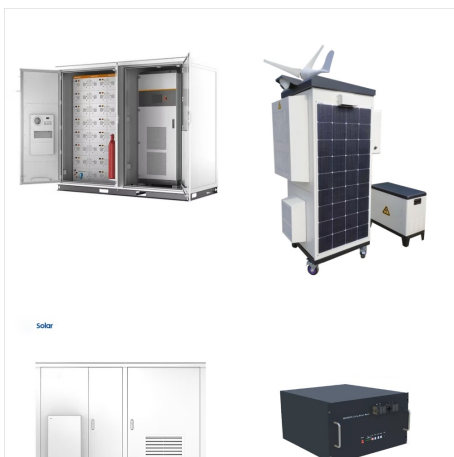


??? The type of lithium battery you have and what section it falls under will determine the set of labels you'll need. ??? Lithium battery forbidden markings follows DOT's HM-224C requirements for when transporting batteries is not permitted. ??? Comply with USPS Publication 52 regulation using our custom label with additional info tab. USPS

PRINTABLE USPS LITHIUM BATTERY LABEL



companies and the U.S. Postal Service/SmartPost. Cause for Concern . While most lithium batteries are safe, some have overheated and caught fire. Once ignited, they can cause any Packages displaying the orange CAO label and/or a "Lithium Batteries ??? Forbidden for transport by Aircraft and Vessel" marking are prohibited for. transport



ALWAYS PROHIBITED IN USPS Lithium-Ion Batteries ??? Forbidden for Transport Aboard Passenger Aircraft USPS TRACKING 9305 5201 0291 70 Title: Poster 298 - Domestic Hazardous Materials Warning Labels and Markings Author: United States Postal Service Subject: Poster 298 Created Date: 1/11/2021 8:22:38 AM



UN3480 ??? Lithium ion battery (RECHARGABLE BATTER-IES) UN3482 ??? Lithium Ion battery (RECHARGABLE BATTER- the appropriate label provided and attach to the package to be returned and write your contact phone number on the label Sample Packaging: Lithium Batteries Blister Pack Blister Pack Cushioning Divider UN 3480 UN 3482 UN 3090 UN 3091

PRINTABLE USPS LITHIUM BATTERY LABEL



For more information on shipping new or manufacturer refurbished products with lithium batteries read USPS Pub 52, Section 349. Check for other common hazardous items. Other commonly missed items that require special packaging are perfumes, nail polish, hairspray, cleaning supplies, firearm accessories, knives, swords, lighters, auto



Lithium battery consignment means one or more mailpieces containing lithium batteries, entered into USPS networks by one mailer or mail service provider within a single mailing or retail The address side of the outer packaging must bear the magnetized material warning label shown in Exhibit 349.242 b and a shipping paper is required, if



1. Is the lithium battery rechargeable? a. If the answer is yes, it is a lithium-ion (polymer) battery and you must: (1) Refer to UN3480 for lithium-ion batteries packaged without equipment. (2) Refer to UN3481 for lithium-ion batteries packaged with or in equipment. b. If the answer is no, it is a lithium metal (alloy) battery and you must: (1

PRINTABLE USPS LITHIUM BATTERY LABEL



The Common Types of Lithium Battery Labels.
Lithium battery shipping labels UN3080, UN3081, UN3490, and UN3491 are used to identify and properly handle packages containing lithium batteries during transport. Here's an explanation of each label and their main differences: 1. UN3480: Lithium-Ion batteries



United States Parcel Service (USPS) published a notice in the Federal Register that describes revisions to USPS Publication 52, Hazardous Restricted, and Perishable Mail. These revisions closely align USPS requirements for shipping lithium cells and batteries with those found in both the U.S. D.O.T. and international regulations.



Edit Un 3481 label printable. Quickly add and highlight text, insert images, checkmarks, and signs, drop new fillable areas, and rearrange or remove pages from your paperwork. Yes, you can ship lithium batteries via USPS. Lithium-ion (rechargeable) battery, UN3480. Lithium metal battery, UN3090. Lithium-ion (rechargeable) battery contained

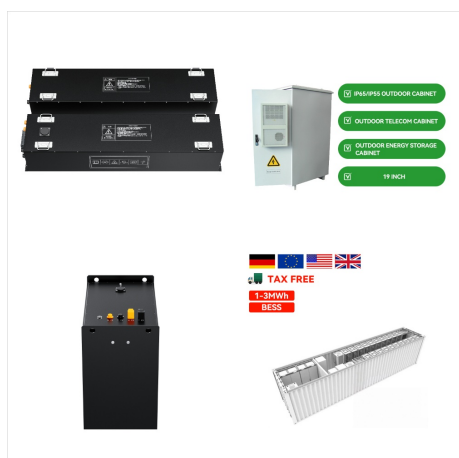
PRINTABLE USPS LITHIUM BATTERY LABEL



USPS Pub 52 Packaging. USPS Pub 52 Markings. Master Series - Podcasts & Videos. Hazmatters - Season 01. Hazmatters - Season 02. Video - DG and the C-Suite. use the UN3090 lithium battery label. If you are shipping lithium metal non-rechargeable batteries contained in or packed with equipment, use the UN3091 lithium battery label.



Every shipper of lithium batteries via air transport has the responsibility to comply with IATA 3.9.2.6.1(g) requirements as of 01 January 2020 . ADR regulations have incorporated this requirement for ground transport (01 July 2019) and it is expected that other



When the Lithium Battery Mark (IATA Figure 7.1.C) is required and used for Section IB and permitted Section II lithium battery shipments, the UN number(s) must be added to the mark. The UN number indicated on the mark should be at least 12 mm high. Note: The Lithium Battery Mark cannot be folded or wrapped around multiple sides of the package.

PRINTABLE USPS LITHIUM BATTERY LABEL



Web an electronic device with a large lithium battery or batteries. There is no expectation for the. Web august 16, 2022 in enko products. Ad print us postal shipping labels online. Web this applies to all shipments of lithium ion and metal batteries whether alone, contained in equipment, packed with equipment or powering a vehicle.

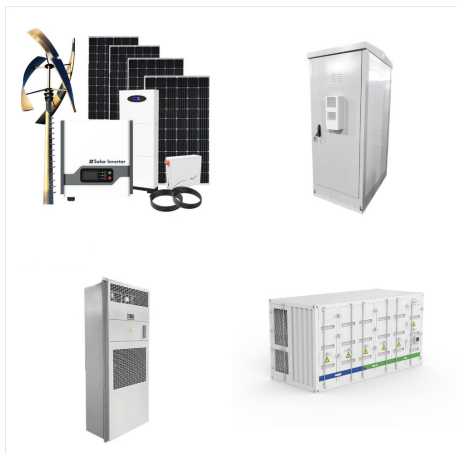


The DL1938 label allows you to hand write or print the UN number, making it more versatile than some of the other designs. Get labels here. Want your lithium battery labels to arrive pre-printed and ready to use? We can customize this label for you! Start our quick label customization process now.



LITHIUM BATTERY SHIPPING GUIDE . JANUARY 1, 2022 . The following guide provides a summary of marking, labeling and paperwork requirements for shipping lithium batteries via domestic US ground (49 CFR 171-180 in effect 1-Jan-2022), international air (2022 IATA DGR, 63rd Edition) and international

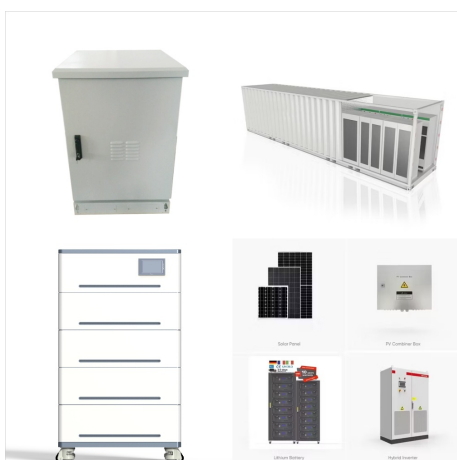
PRINTABLE USPS LITHIUM BATTERY LABEL



Except for mailpieces containing button cell batteries installed in equipment (including circuit boards), or no more than 4 lithium metal cells or 2 lithium metal batteries installed in the equipment they operate, mailpieces containing lithium metal batteries must bear a DOT-approved lithium battery mark, as specified in 49 CFR 173.185(c)(3)(i)



Lithium Battery Shipping Labels UN3480 Lithium Battery Marking Label . Printable Lithium Battery Label. Printable Lithium Battery Label ??? Printable labels are an easy and flexible way to label and organize items in your office, home or at work. They can be used to label storage containers, boxes, products as well as for a variety of other uses.



Place the lithium battery label for shipping on the surface of the package (side visible) without folding it or overlapping it with other labels. Add an emergency contact number. Use a lithium battery label for shipping that is ???

PRINTABLE USPS LITHIUM BATTERY LABEL



The warning labels shown in Exhibit 325.3 a, Exhibit 325.3 b, and Exhibit 325.4 may appear only on mailpieces containing mailable hazardous materials that require use of the label under Postal Service requirements. Division 5.1, 5.2, Class 8 and Class 9 labels are only permitted when used in conjunction with a Limited Quantity air mark. Exhibit