



Can lithium ion batteries be recycled?

Lithium-ion batteries and devices containing these batteries should NOT go in household garbage or recycling bins. Lithium-ion batteries SHOULD be taken to separate recycling or household hazardous waste collection points. To prevent fires, tape battery terminals and/or place lithium-ion batteries in separate plastic bags.

How do you dispose of lithium batteries?

To dispose of lithium batteries, you'll need to take them to a recycling center, which is easy to find online. Keep batteries out of your regular recycling bin. Household batteries are recycled separately from other items. Mixing batteries in with other recyclables can result in a fire, as the battery can spark.

Where can I drop off a used lithium ion battery?

Instead, EPA recommends that all household lithium batteries be dropped off at battery collection sites (e.g., often located at electronics retailers) or household hazardous waste collection facilities for proper management. The EPA Used Lithium-Ion Batteries web page offers resources to find a battery recycling location near you.

Can you put lithium batteries in the trash?

Unlike alkaline batteries, lithium batteries are reactive and contain hazardous materials. For this reason, you should not put them in the trash. To dispose of lithium batteries, you'll need to take them to a recycling center, which is easy to find online. Keep batteries out of your regular recycling bin.

What is the purpose of recycling lithium-ion batteries?

The purpose of recycling lithium-ion batteries is to avoid toxic electronic waste from clogging the landfills and to use the retrieved materials in the fabrication of new products. If you want to dispose of or recycle your old batteries, here are 4 steps you can take to safely recycle them.

How do you care for a used lithium battery?

EPA recommends that households who generate used lithium batteries treat them with care, isolate the terminals (e.g., cover the terminals with non-metallic tape while keeping the label legible, or individually bag

PROPER DISPOSAL OF LITHIUM ION BATTERIES



batteries), and protect the batteries from damage.



Rechargeable batteries contain toxic metals that can be released into the environment when improperly disposed. The NYS Rechargeable Battery Law (Law), Article 27, Title 18 of the Environmental Conservation Law, was signed into law on December 10, 2010, and makes it illegal for any person to throw rechargeable batteries in the trash. The Law requires manufacturers of ???



Lithium Ion batteries Proper Disposal of Lithium Batteries: A Guide for Responsible Recycling Why Proper Disposal Matters. Lithium batteries power many devices we use daily, from smartphones and laptops to electric vehicles. However, improper disposal can harm the environment and pose safety risks. These batteries contain hazardous materials



Donate or recycle lithium-ion batteries. These are the kinds of batteries that typically power portable electronics like your mobile phone, digital camera, tablet, or laptop. Lithium-ion batteries can be recycled at a recycling center or hazardous waste collection site, or donated to refurbishers and recyclers.

PROPER DISPOSAL OF LITHIUM ION BATTERIES



Responsibility for the disposal of lithium batteries in the United States hinges on several key factors, primarily revolving around the source of the battery, its type, and the regulatory ???



There are two types of lithium batteries that U.S. consumers use and need to manage at the end of their useful life: single-use, non-rechargeable lithium-metal batteries and re-chargeable lithium-poly-mer cells (Li-ion, Li-ion cells). Li-ion batteries are made of materials such as cobalt, graphite, and lithium, which are considered critical

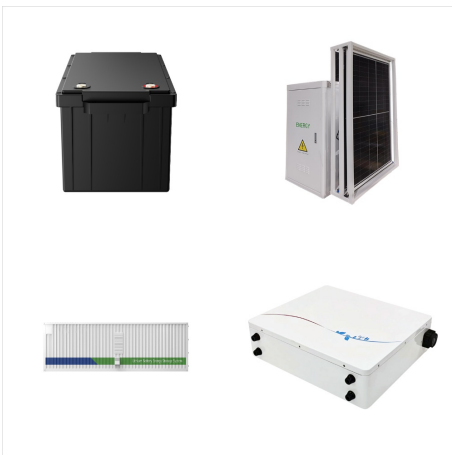


Often the electrolyte is flammable. To store damaged batteries safely until proper disposal, you should place them in a fireproof container, such as a metal UN approved drum filled with chemically inert cushioning material like sand. The battery must be surrounded by the inert material (sand or specialised silica). Avoid disposing of damaged

PROPER DISPOSAL OF LITHIUM ION BATTERIES



Lithium-Ion batteries are used in many different devices, but most commonly in electronics. They provide portable electricity for items such as smartphones, laptops, and tablets. They can also be found in medical equipment, electric vehicles, and power tools. Lithium-Ion batteries can be recharged countless times, however they eventually reach the end of their life.



How to Properly Dispose of Lithium-Ion Batteries. Proper disposal begins with you, the consumer. The first step is to ensure that your lithium-ion batteries are no longer usable and cannot be rejuvenated or repurposed. Once a battery reaches this point, it's important to handle it with care, adhering to safety guidelines to prevent damage or



In fact, lithium-ion batteries are one of the leading causes of recycling truck fires. Recyclers estimate that lithium-ion batteries are responsible for 80-90% of their fires now. In one instance, a battery fire at a recycling facility in Queens burned for two straight days and shut down four branches along the Long Island Rail Road for several

PROPER DISPOSAL OF LITHIUM ION BATTERIES



The Lithium-Ion Car Battery Recycling Advisory Group or proper disposal. Although retailers are not required to take back any other kind of universal waste batteries, many voluntarily take back alkaline (e.g., non-rechargeable AA and AAA batteries) and other universal waste batteries. Check with your local retailer(s) to learn about their



EPA hosted a series of virtual feedback sessions and issued a request for information to seek input on all battery chemistries (e.g., lithium-based and nickel-metal hydride) and all battery types (e.g., small format primary or single-use and rechargeable batteries; mid-format; large format vehicle batteries, including electric vehicles; and



The demand for lithium-ion batteries (LIBs) for powering consumer electronics and electric vehicles (EVs) is growing at a near-exponential rate. With increased use, the risk of fires from improper disposal of these batteries, particularly from consumer electronics, is an increasing concern. When damaged, LIBs can short circuit and catch on fire.

PROPER DISPOSAL OF LITHIUM ION BATTERIES



If you don't properly install, use, store and dispose of your batteries, they can cause serious injury if they: overheat; leak; burst; catch fire and explode; Lithium-ion batteries are more volatile and can cause widespread damage and harm if not used safely. Report any battery-related injuries directly to the original manufacturer.

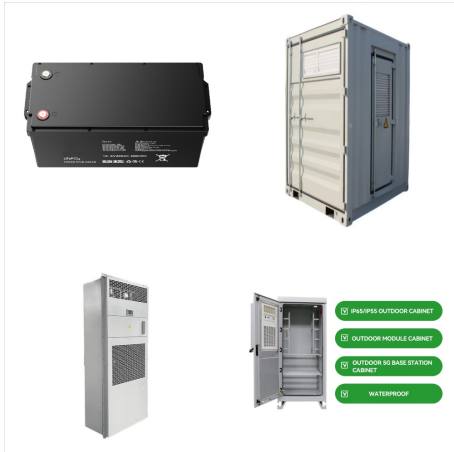


Proper Battery Disposal. Regular household (alkaline and zinc carbon) batteries should be disposed of in regular trash. Rechargeable batteries, as well as lithium, silver oxide, and mercury batteries, should be dropped off at an Arlington fire station or the County HHM Facility.. Background from the U.S. Environmental Protection Agency.. Alkaline Batteries



Why is it important to properly dispose of lithium-ion batteries? Placing these batteries or devices with these batteries into the trash or recycling bin can have serious consequences for human health and the environment: Under pressure, heat and/or physical perforation, batteries made from lithium can ignite and cause fires in trash and

PROPER DISPOSAL OF LITHIUM ION BATTERIES



Electric-Car Battery Recycling. While EV batteries hold 20 to 100 times more energy than those used by hybrids, they're recycled pretty much the same way as the smaller ones. The packs are shipped



Proper disposal of lithium-ion batteries is essential to protect the environment and human health. By utilizing local battery recycling programs, recycling centers, manufacturer take-back programs, the Call2Recycle program, or mail-in recycling programs, we can ensure the safe and responsible disposal or recycling of these batteries.

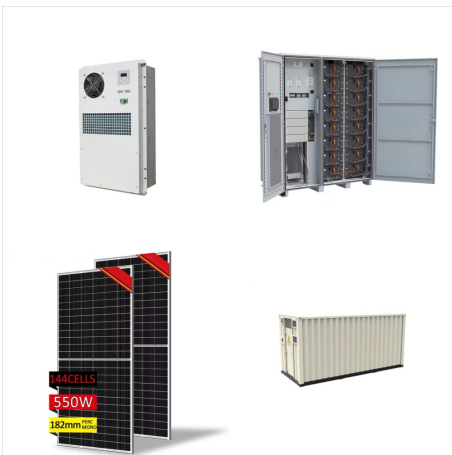


If these batteries are burned or landfilled, the heavy metals in them can be released into the environment. Many batteries, particularly rechargeable lithium-ion batteries used in many electronics, have a significant risk of fire if they are mishandled or damaged. For that reason, it is important to handle used batteries properly.

PROPER DISPOSAL OF LITHIUM ION BATTERIES



If a lithium-ion battery becomes damaged, contact the battery or device manufacturer for specific handling information. EPA recommendation: Look for labels identifying battery chemistry. Do not put rechargeable batteries in the trash or municipal recycling bins. Find a recycling location near you: Ni-Cd; Li-ion; Ni-MH; Ni-Zn; Pb; Lithium-Ion



Lithium batteries, including lithium-ion batteries, are used in many devices we rely on every day. From smartphones and laptops to electric vehicles, these batteries are popular because they are small, light, and can store a lot of energy. Proper disposal of lithium batteries is crucial for environmental safety and personal well-being. 1



Yes, lithium batteries can be recycled under the definition of solid waste recycling exclusion at 40 CFR 261.4(a)(24) and/or 40 CFR 261.4(a)(25) (for recycling occurring domestically and after export, respectively) as long as (1) both the state that the batteries are generated in and the state in which the recycling takes place have adopted

PROPER DISPOSAL OF LITHIUM ION BATTERIES



Need to dispose of a laptop battery? Proper removal, recycling, and disposal of a laptop battery is easier than you think and often free of charge. G A S catching fire. Once a fire starts, it is challenging to put out because the battery itself is flammable. It's why lithium-ion batteries are treated as hazardous materials when shipped or



How to Properly Store and Dispose of Lithium-Ion Batteries. Lithium-ion batteries are widely used in many devices, from smartphones to power tools. However, these batteries require careful handling to ensure safety and prevent environmental harm. Here's what you need to know about storing and disposing of lithium-ion batteries. Proper Storage



View presentation from eWaste ePlanet on certification programs for recyclers to ensure safe management and recycling of batteries (given during GRC Webinar on Safe Handling of Batteries held on November 30, 2023.) View presentation on best management practices for managing Lithium batteries at a recycling facility. Presentation given during

PROPER DISPOSAL OF LITHIUM ION BATTERIES



Lithium Ion batteries (LI-ion) (rechargeable)
Portable power tool Many stores that sell batteries, phones or electronic will take back used batteries for recycling. Visit call2recycle.org about battery recycling in your area. Where to Recycle Batteries.
Title: ???



? Part 5. Proper disposal of dead batteries. When it's time to retire a lithium-ion battery, make sure you dispose of it safely. Batteries contain chemicals that can harm the environment if not disposed of correctly. Avoid Regular Trash: Never throw lithium-ion batteries in regular trash. They can cause fires and release toxic chemicals.



Do not attempt to modify lithium-ion batteries. Modifying lithium-ion batteries can destabilize them and increase the risk of overheating, fire and explosion. Read and follow any other guidelines provided by the manufacturer. Storage. Store lithium-ion batteries with about a 50% charge when not in use for long periods of time.