

Does PSO offer energy-saving programs?

PSO offers more than just rebates. Our energy-saving programs provide customers ways to save year-round. From summertime "peak event" programs and energy coaching to education kits for fifth graders, our programs deliver energy savings to homes and businesses across our communities.

How can PSO improve the performance of a solar panel?

By adjusting the control system's parameters, PSO can determine the optimal operating point of the solar panel and improve its overall performance. PSO employs swarm intelligence by simulating the behavior of particles to find the best solution for a given problem.

What is PSO in power system?

Kennedy and Eberhart introduced PSO as one of the modern stochastic search techniques. It has gained a lot of attention in various power system applications. Generally, PSO is characterized as a simple heuristic of well-balanced mechanism with flexibility to enhance and adapt to both global and local exploration abilities.

How many megawatts does PSO own?

Based in Tulsa, PSO owns approximately 3,800 megawatts of generating capacity fueled primarily by natural gas. It also maintains and operates 22,000 miles of distribution lines and 3,700 miles of transmission lines. PSO is one of the largest distributors of wind energy in the state.

What is the current PSO?

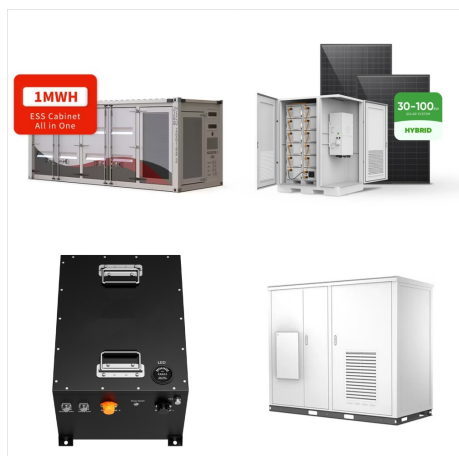
This ensures a baseline assessment is carried out with prison health regional teams and includes a suggested framework for managing clinical governance in prisons. PSO 3100 is the current PSO. It came into effect on 16 January 2003.

How can PSO help families in need?

We're shining a light to help families in need by partnering with local food banks to deliver free energy-efficient LED light bulbs year-round. PSO's energy-saving programs provide residential and business customers in Oklahoma ways to conserve energy year-round.



You have the power to make a positive impact. Enroll in Power Hours and enjoy savings that make a difference for your electricity use, your household energy budget, and your community. Get a \$50 e-gift card when you enroll a Wi-Fi thermostat, plus you'll receive a \$25 e-gift card per registered thermostat at the end of the season. Enroll Now



When it comes to saving energy, PSO is your partner in power. Let us help you make your home or business more efficient and comfortable year-round. Take advantage of our helpful tools to see how easy it is to save. Solar panels are a big investment, whether you lease or buy. A number of factors make it difficult to determine the return on



In this paper, a novel hybrid Maximum Power Point Tracking (MPPT) algorithm using Particle-Swarm-Optimization-trained machine learning and Flying Squirrel Search Optimization (PSO_ML-FSSO) has been proposed to obtain the optimal efficiency for solar PV systems. The proposed algorithm was compared with other well-known methods viz. Perturb & a?]



To qualify for consideration, solar projects must interconnect to the Southwest Power Pool (SPP) RTO and be located in Oklahoma. PSO has a preference for projects located in its service territory



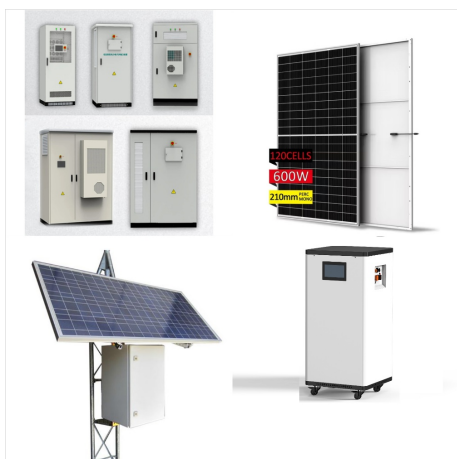
The average calculated power for each season in 2017 and 2018 is considered as the training input dataset along with the temperature data, ECF, and time of the day, whereas the Fuzzy-PSO forecasting model is validated using the average solar PV power in 2019. The proposed Fuzzy-PSO solar power prediction model effectively forecasts the solar



With the advancement of peak carbon and carbon neutrality targets, renewable energy power generation is gradually gaining popularity. As a representative of renewable energy applications, photovoltaic (PV) power generation, due to its uncertainty and volatility, can cause impacts on the power grid when it is connected to the grid on a large scale, leading to the a?|



PSO's Proposed Fuel-Free Power Plan. PSO's proposed fuel-free power plan includes a total Investment of \$2.47 billion. The plan consists of the Lazbuddie wind, Parmer County, TX a?? 265 MW and Pixley solar, Barber County, KS a?? 189 MW, which are expected to be completed in April 2025 as well as four facilities scheduled for completion in



PSO Fort Sill PV Solar Work - Draft RFP. Public Service Company of Oklahoma (PSO), an American Electric Power Company is requesting proposals for additional Photovoltaic Solar (PV Solar) energy to be in commercial operation by December a?|



How Power Pay TM Prepaid Electricity Works. With Power Pay TM, we calculate your electric usage on a daily basis and deduct from your prefunded account, which is similar to a prepaid phone card. You choose the amount you want to pay, and the method and frequency of your payments. At the time you enroll, you will have the ability to select a balance threshold that a?|



Solar panels, balance of system components (wiring, mounting hardware, inverter, etc.), and labor for installation are all taken into account in the upfront cost. Why are my energy savings different than my bill savings? There are "fixed charges" on your bill, which are charges that exist no matter how much energy you use. (PSO) is your



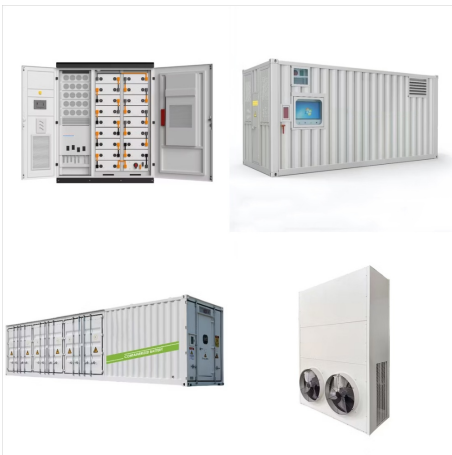
PSO Rate Update and Refund Information. PSO Files For Approval of 2024 Rate Review. PSO 2021 Base Rate Case. TIME OF DAY RATES. Compare Rates. How Residential Solar Panels Work. Wind. Business Customers. Business Summary. Business To Business. Business To Business Overview. Energy Provider RFPs.



Public Service Company of Oklahoma (PSO) has issued a Request for Proposals (RFP) seeking additional generation resources. The RFP seeks up to 1,500 megawatts of additional power generating capacity to be in service no later than December 15, 2028. The RFP includes all sources, such as natural gas, wind, solar and energy storage proposals.



Solar power plant (SPP) . PSO algorithm . PVPs optimal sizing . high-power demand . energy efficiency. 1 Introduction Nowadays, the infrastructure of the energy has undertaken a huge change



The flowchart of the PSO algorithm used for power management at the common coupling point and maximum power extraction at the DC/DC converter is given the number of solar panels and the capacity of the battery bank. These values are listed in Table 1. The objective function provides an overall estimate of the proposed system. Through this



equipment is rooftop solar panels. Inverter a?? Most distributed energy resources like rooftop solar panels generate direct current (DC) power, while home appliances use alternating current (AC) power. An inverter converts DC power to usable AC power, and provides overcurrent or overvoltage protection. AC Disconnect Switch a?? We use this device to



Customer Service Phone: 800-572-1113
 Southwestern Power Customer Service Phone:
 888-216-3523 AEP Ohio Customer Service Phone:
 800-672-2231 Public Service of Oklahoma
 Customer Service Phone: 888-216-3523 Version
 Notes: Revised Figures 13, 14, 14b. Limited the
 meter location from pad mount transformer for PSO.



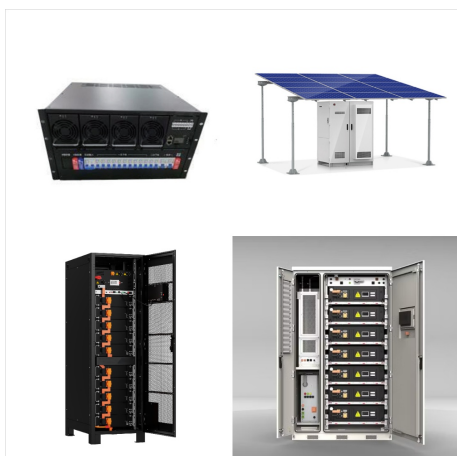
For MPPT realization, a DCa??DC power converter
 is utilized to match the PV array output to the load,
 where the position of each search agent in the
 hybrid GWOa??PSO algorithm is determined as



PSO Files For Approval of 2024 Rate Review. PSO
 2021 Base Rate Case. TIME OF DAY RATES.
 Compare Rates. Economic Development. Economic
 Development Overview. Thinking About Solar
 Panels? Use our solar calculator and explore your
 options before you buy. Solutions for your business
 Find out how to save money, connect service, and
 more.



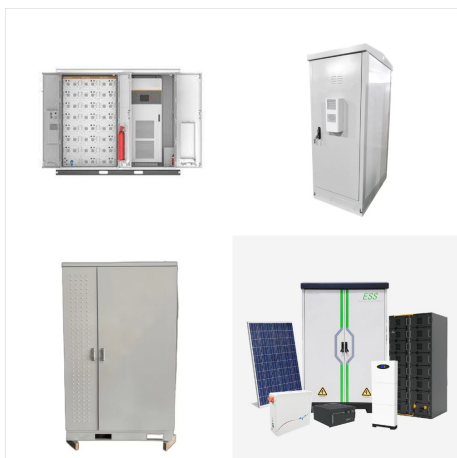
Multi-objective PSO based optimal placement of solar power DG in radial distribution system. June 2017; Journal of Electrical Systems 13(2):322-331; License; CC BY 4.0; Authors: Mahesh Kumar.



How Residential Solar Panels Work. Wind. Business Customers. Business Summary. Business To Business. Power Your home with 100% Home-Grown Oklahoma Wind Power. Enroll your home or business today by signing into your account or by calling us at 888.PSO.1367, Monday through Friday 8 a.m. to 5 p.m.



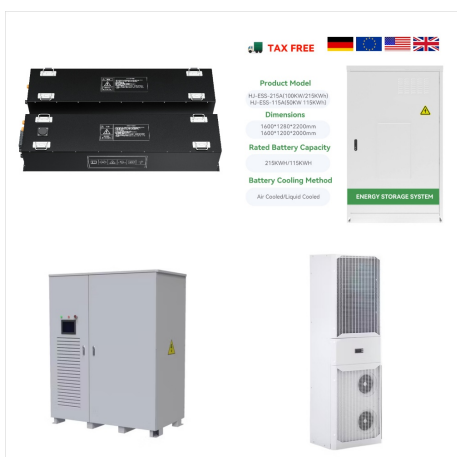
Active power filter module function to improve power quality conditions using GWO and PSO techniques for solar photovoltaic arrays and battery energy storage systems Author links open overlay panel Mohamad Abou Houran a, Kiomars Sabzevari b, Alaaeldien Hassan a, Adel Oubelaid c, Marcos Tostado-Veliz d, Nima Khosravi e f



Grid-linked photovoltaic (PV) plant is a solar power system that is connected to the electrical grid 39,40. It consists of solar panels, an inverter, and a connection to the utility grid (see Fig. 3).



With PSO's Renewable Energy Choice Program, residential and business customers may purchase up to 100% of wind and solar power for a portion or all of their monthly energy usage. This program is the perfect option to help you meet your renewable goals, as well as customers who want to impact our future as we move toward less dependence on



Solar energy is one of the most important factors used in the development of the countries. Since it is a renewable energy source, it reduces the demand on the non-renewable energy sources such as fossil fuels, oil, natural gas, nuclear, and other sources. Therefore, many researchers have sought to improve the performance of solar energy systems via applying a?