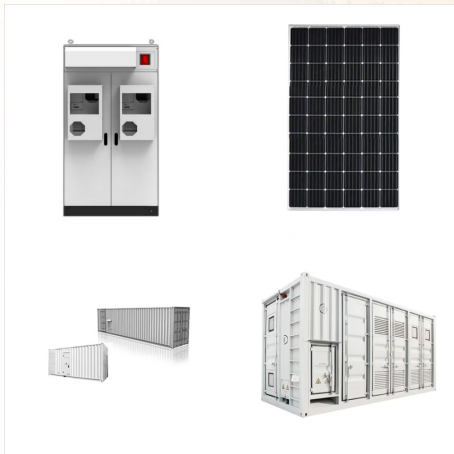




Located at the centre of the solar system and influencing the motion of all the other bodies through its gravitational force is the Sun, which in itself contains more than 99 percent of the mass of the system. The planets, in order of their distance outward from the Sun, are Mercury, Venus, Earth, Mars, Jupiter, Saturn, Uranus, and Neptune.



Traditionally, the solar system has been divided into planets (the big bodies orbiting the Sun), their satellites (a.k.a. moons, variously sized objects orbiting the planets), asteroids (small dense objects orbiting the Sun) and comets (small icy objects with highly eccentric orbits).



Our moon is the only other place in the solar system that that humans have visited. It's a cold round rock possessing caches of frozen water. Our moon orbits the Earth about once every 27 days at

REAL PHOTOS OF OUR SOLAR SYSTEM



We mean waaaaay out there in our solar system ??? where the forecast might not be quite what you think. Let's look at the mean temperature of the Sun, and the planets in our solar system. The mean temperature is the average ???



We mean waaaaay out there in our solar system ??? where the forecast might not be quite what you think. Let's look at the mean temperature of the Sun, and the planets in our solar system. The mean temperature is the average temperature over the surface of the rocky planets: Mercury, Venus, Earth, and Mars.



Eyes on the Solar System. This simulated live view of the solar system allows you to explore the planets, their moons, asteroids, comets and the spacecraft interacting with them in 3D. You can also fast-forward or rewind time, and explore the solar system as it looked from 1950 to 2050, complete with past and future NASA missions.

REAL PHOTOS OF OUR SOLAR SYSTEM



A collection of Deep Field images that look back in both space and time, capturing thousands of galaxies in various stages of evolution. Hubble's Solar System. The Hubble Space Telescope's view of the planets and other objects orbiting our Sun. ???



Like early explorers mapping the continents of our globe, astronomers are busy charting the spiral structure of our galaxy, the Milky Way. Using infrared images from NASA's Spitzer Space Telescope, scientists have discovered that the Milky Way's elegant spiral structure is dominated by just two arms wrapping off the ends of a central bar of stars.



authentic solar system stock photos, high-res images, and pictures, or explore additional planet or galaxy stock images to find the right photo at the right size and resolution for your project.

REAL PHOTOS OF OUR SOLAR SYSTEM



Voyager 1 was speeding out of the solar system ??? beyond Neptune and about 3.7 billion miles (6 billion kilometers) from the Sun ??? when mission managers commanded it to look back toward home for a final time. It snapped a series of 60 images that were used to create the first "family portrait" of our solar system.



Hubble's high-resolution images of the planets and moons in our Solar System can only be surpassed by pictures taken from spacecraft that actually visit them. Hubble even has one advantage over these probes: it can look at these objects periodically and observe them over much longer periods than any passing probe could.

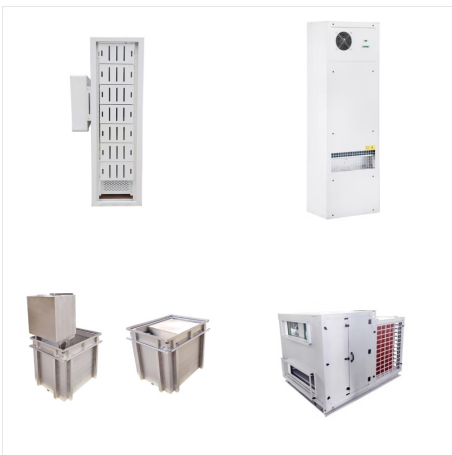


The Voyager 1 and 2 spacecraft explored Jupiter, Saturn, Uranus and Neptune before starting their journey toward interstellar space. Here you'll find some of those iconic images, including "The Pale Blue Dot" - famously described by ???

REAL PHOTOS OF OUR SOLAR SYSTEM



Mars, the red planet, is the seventh largest planet in our solar system. Mars is about half the width of Earth, and has an equatorial diameter of about 4,221 miles (6,792 kilometers). Mars is the fourth planet from the Sun, orbiting at an average distance of 141.6 million miles (227.9 million kilometers).



Saturn is the sixth planet from the Sun and the second largest planet in our solar system. Adorned with a dazzling system of icy rings, Saturn is unique among the planets. Saturn is a massive ball made mostly of hydrogen and helium. The farthest planet from Earth discovered by the unaided human eye, Saturn has been known since ancient times.



Webb is solving mysteries in our solar system, looking beyond to distant worlds around other stars, and probing the mysterious structures and origins of our universe and our place in it. Webb is an international program led by NASA with its partners, ESA (European Space Agency) and the Canadian Space Agency. Learn more about Webb at: [webb.nasa.gov](https://www.nasa.gov/webb)

REAL PHOTOS OF OUR SOLAR SYSTEM



Saturn, the second-largest planet in our solar system and is the sixth planet from the Sun. Famous for its rings, Saturn was captured brilliantly by the Hubble Space Telescope in 2019. 9 Last but

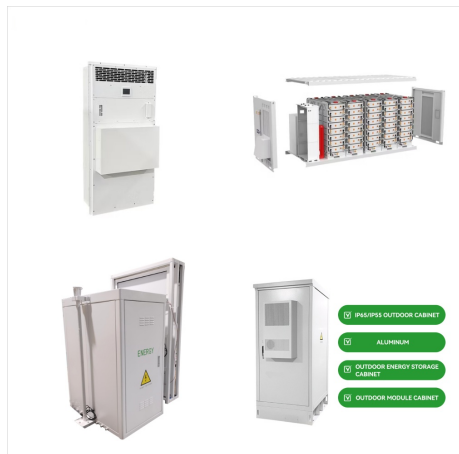


NASA's MESSENGER spacecraft has constructed the first portrait of our solar system by combining 34 images taken by the spacecraft's Wide Angle Camera on Nov. 3 and 16, 2010. The mosaic, pieced together over a period of a few weeks, comprises all of the planets except for Uranus and Neptune, which were too faint to detect.



The existence of a moon located outside our solar system has never been confirmed but a new NASA-led study may provide indirect evidence for one. New research done at NASA's Jet Propulsion Laboratory reveals potential signs of a rocky, volcanic moon orbiting an exoplanet 635 light-years from Earth. The biggest clue is a sodium cloud [???

REAL PHOTOS OF OUR SOLAR SYSTEM



The existence of a moon located outside our solar system has never been confirmed but a new NASA-led study may provide indirect evidence for one. New research done at NASA's Jet Propulsion Laboratory reveals ???



Saturn, the second-largest planet in our solar system and is the sixth planet from the Sun. Famous for its rings, Saturn was captured brilliantly by the Hubble Space Telescope in 2019. 9 Last but