



Nonrenewable energy sources, like coal, oil, and natural gas, cannot be easily replenished. A renewable energy source can be more easily replenished. Examples of renewable energy include wind, sunlight, moving water, and Earth's heat. To better understand renewable vs. nonrenewable energy???

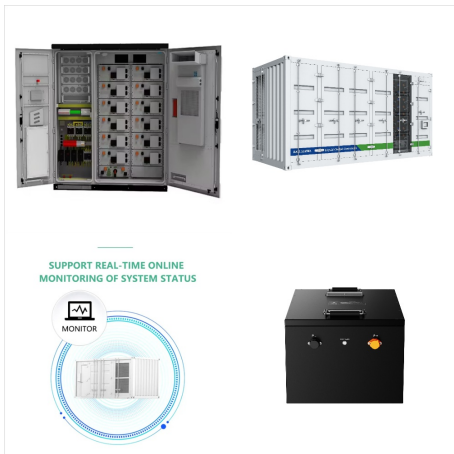


With nonrenewable energy sources, they can produce a more constant power supply, as long as the necessary fuel is available. In comparison, renewable energy sources depend on unreliable sources such as wind and solar energy. Extraction and Storage; When it comes to nonrenewable energy sources, they are moderately cheap to extract.



The sun, directly or indirectly, is the source of all energy on Earth: plants use energy to grow the food we eat. Non-renewable energy sources are fossil fuels: coal, oil, natural gas, and the elements uranium and plutonium. Renewable energy sources include solar power, wind, wave and tidal energy, hydro-electric, biomass and geothermal.

RENEWABLE AND NONRENEWABLE SOURCES OF ENERGY EXAMPLES



Energy sources are categorized into renewable and nonrenewable types. Nonrenewable energy sources are those that exist in a fixed amount and involve energy transformation that cannot be easily replaced. Renewable energy sources are those that can be replenished naturally, at or near the rate of consumption, and reused.



Moreover, there is only a finite amount of these resources on earth. Renewable and Alternative Energy: Wind Power, Solar Power, Hydropower, Nuclear Energy, and Biofuels. Forms of energy not derived from fossil fuels include both renewable and alternative energy, terms that are sometimes used interchangeably but do not mean the same thing



What is renewable energy? Renewable energy is energy that comes from a source that won't run out. They are natural and self-replenishing, and usually have a low- or zero-carbon footprint. Examples of renewable energy sources include wind power, solar power, bioenergy (organic matter burned as a fuel) and hydroelectric, including tidal energy.

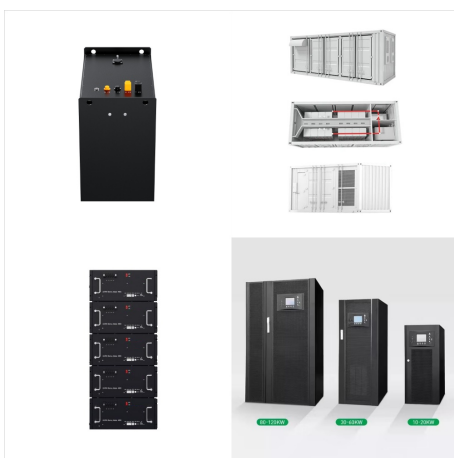
RENEWABLE AND NONRENEWABLE SOURCES OF ENERGY EXAMPLES



Some non-renewable sources of energy, such as nuclear power, [contradictory] generate almost no emissions, while some renewable energy sources can be very carbon-intensive, For example, biomass is often associated with unsustainable deforestation. [23] ???



Renewable energy is energy derived from natural sources that are replenished at a higher rate than they are consumed. Sunlight and wind, for example, are such sources that are constantly

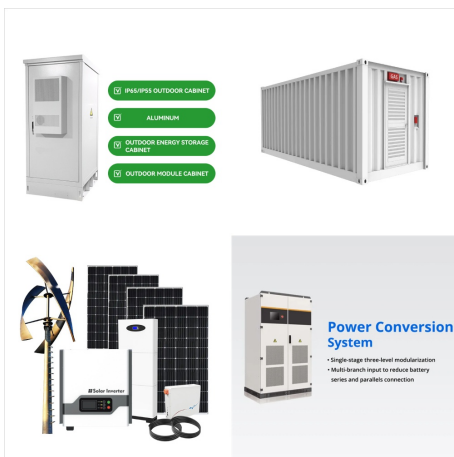


What is meant by a non-renewable source of energy? Give two examples of non-renewable source of energy. Renewable energy; Give two examples for each of the following:i. Renewable sources of energyii. Non-renewable sources of energy; Renewable Energy and Cloud Computing; Name a non-renewable source of energy other than fossil fuels.

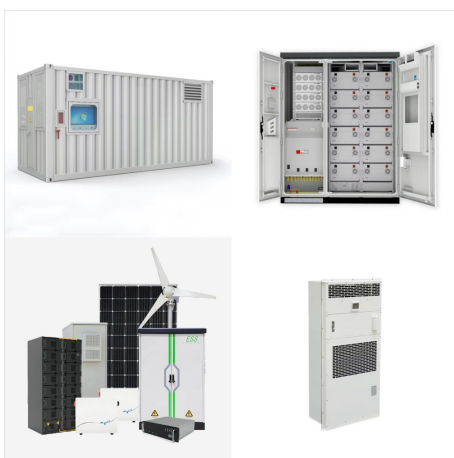
RENEWABLE AND NONRENEWABLE SOURCES OF ENERGY EXAMPLES



Renewable energy, usable energy derived from replenishable sources such as the Sun (solar energy), wind (wind power), rivers (hydroelectric power), hot springs (geothermal energy), tides (tidal power), and biomass ???



Non-renewable energy resources cannot be replaced ??? once they are used up, they will not be restored (or not for millions of years).
Non-renewable energy resources include fossil fuels and nuclear power.. Fossil fuels. Fossil fuels (coal, oil and natural gas) were formed from animals and plants that lived hundreds of millions of years ago (before the time of the dinosaurs).



Biomass was the primary source of U.S. energy consumption until the mid-1800s when the industrial revolution saw the introduction of non-renewable energy sources. However, many countries still use biomass energy as a leading fuel source, particularly where cooking and heating are concerned.

RENEWABLE AND NONRENEWABLE SOURCES OF ENERGY EXAMPLES



Renewable energy sources are growing quickly and will play a vital role in tackling climate change. Wind generation at scale ??? compared to hydropower, for example ??? is a relatively modern renewable energy source but is growing quickly in many countries across the world.



With nonrenewable energy sources, they can produce a more constant power supply, as long as the necessary fuel is available. In comparison, renewable energy sources depend on unreliable sources such as wind and ???



In any discussion about climate change, renewable energy usually tops the list of changes the world can implement to stave off the worst effects of rising temperatures. That's because renewable energy sources, such as solar and wind, don't emit carbon dioxide and other greenhouse gases that contribute to global warming. Clean energy has far more to ???

RENEWABLE AND NONRENEWABLE SOURCES OF ENERGY EXAMPLES



Renewable and nonrenewable energy sources can be used as primary energy sources to produce useful energy such as heat, or they can be used to produce secondary energy sources such as electricity and hydrogen. Nonrenewable energy sources account for most U.S. energy consumption. In the United States and many other countries, most energy sources

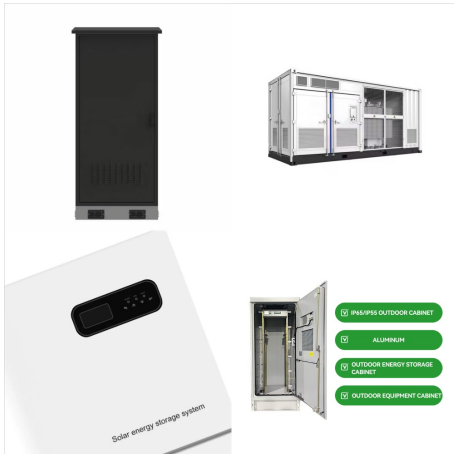


Renewable and non-renewable energy sources are the most important and vital sources of energy on this planet. Renewable energy is derived from sources that are continuously refilled. Fossil fuels, such as gas, coal, and oil, are some examples of non-renewable energy sources. For a large number of industries, these natural resources are a



The difference between the two is one is non-renewable, and the other is renewable. Login. Study Materials. NCERT Solutions. NCERT Solutions For Class 12. Non-conventional sources are also known as renewable sources of energy. Examples of non-conventional sources of energy include solar energy, bioenergy, tidal energy and wind energy.

RENEWABLE AND NONRENEWABLE SOURCES OF ENERGY EXAMPLES



Nonrenewable Resources. Nonrenewable resources are natural resources that exist in fixed amounts and can be used up. Examples include fossil fuels such as petroleum, coal, and natural gas. These fuels formed from the remains of plants over hundreds of millions of years. We are using them up far faster than they could ever be replaced.



Examples of nonrenewable resources include fossil fuels, oil, natural gas, and coal. The call to use renewable resources, especially as energy sources, is becoming more common. That's because



Renewable energy can lessen the strain on the limited supply of fossil fuels, which are considered nonrenewable resources. Using renewable resources on a large scale is costly, and more research

RENEWABLE AND NONRENEWABLE SOURCES OF ENERGY EXAMPLES



The production of nuclear fuel is what makes it an example of a non-renewable resource. (Foto: CC0 / Pixabay / distelAPPArath) While nuclear energy itself is considered a renewable energy source, the process of harvesting nuclear energy is what makes nuclear fuels non-renewable. Nuclear energy is released by splitting the nucleus of an atom, in a process ???



Energy is one of the major inputs for the economic development of the country. Any sustainable energy source that comes from the natural environment is a renewable energy source. Renewable energy is inexhaustible and a clean alternative to fossil fuels. In this article, we will learn about the types and sources of renewable energy.