



The Office of Energy Efficiency and Renewable Energy is the largest investor in clean energy technology development in the U.S. Government. During the Biden Administration, EERE has published FOAs totaling over \$3.8 billion and has selected promising proposals to receive more than \$884 million in awards.



Renewable Energy Solutions is a Connecticut incentive program for solar and other renewable energy launching in 2022. Through this program, customers can sell power generated and any renewable energy certificates (RECs) to Eversource.



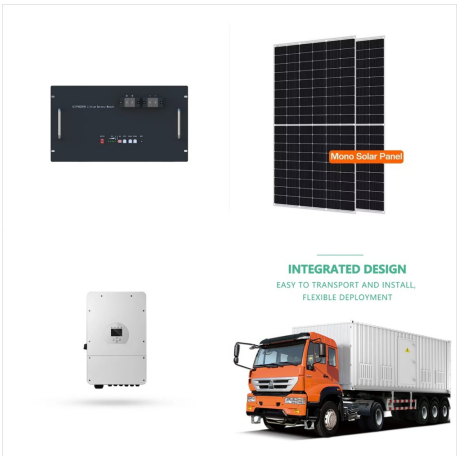
With a focus on deploying next generation clean energy technology, the Clean Energy Corps will help America meet its goals of a carbon-free power sector in 2035 and a decarbonized economy in 2050. But we can't do it without YOU. The Clean Energy Corps is hiring NOW. We need talented, diverse, kind, and hardworking people like you to join this



. Content Owned by MINISTRY OF NEW AND RENEWABLE ENERGY . Developed and hosted by National Informatics Centre, Ministry of Electronics & Information Technology, Government of India.
Last Updated: Nov 04, 2024



Ministry of New & Renewable Energy (MNRE) is the nodal agency at the central level for promotion of grid-connected and off-grid renewable energy in the country. Ministry's programmes are implemented in close coordination with a?



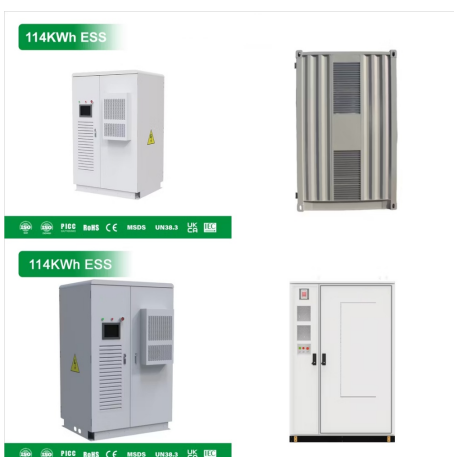
Portugal's renewable electricity production from 1980 until 2019. Renewable energy in Portugal was the source for 25.7% of total energy consumption in 2013. [1] In 2014, 27% of Portugal's energy needs were supplied by renewable sources. [2] In 2016, 28% of final energy consumption in Portugal came from renewable sources.



The Federal Energy Management Program (FEMP) announces the launch of the new FEMP Technical Assistance request portal. This online tool allows Federal agencies to submit and track requests for assistance with meeting their renewable energy and energy-efficiency goals.



Ministry of New & Renewable Energy (MNRE) is the nodal agency at the central level for promotion of grid-connected and off-grid renewable energy in the country. Ministry's programmes are implemented in close coordination with State Nodal Agencies (SNAs) for a?



Renewable energy (or green energy) is energy from renewable natural resources that are replenished on a human timescale. The most widely used renewable energy types are solar energy, wind power, and hydropower. Bioenergy and geothermal power are also significant in some countries.



Changes to the State Energy Data System (SEDS)
Notice: In October 2023, we updated the way we calculate primary energy consumption of electricity generation from noncombustible renewable energy sources (solar, wind, hydroelectric, and geothermal). Visit our [Changes to 1960a??2022 conversion factor for renewable energy](#) page to learn more.



Renewable Energy considers for publication: original scientific or engineering research papers concerned with any aspect of renewable energy research, measurement, development or application, and invited reviews looking at the state-of-the-art of a particular topic through publications in that field.



The Portal and Repository for Information on Marine Renewable Energy (PRIMRE) is a network of knowledge hubs that provides broad access to information on engineering and technologies, resource characterization, device performance, and the environmental effects of marine energy projects. PRIMRE facilitates the commercial development of the marine energy industry by a?)



Share Your Insights & Shape the Future of Renewable Energy World! Your experiences matter. Complete this short survey for a chance to win a \$100 gift card. Your feedback powers our growth! Take the Survey Now! We need to put a price on carbon pollution, implores Rhode Island Senator Whitehouse "Customers just want hot showers and cold beer



Renewable Energy BETP has launched the ezFile case management system. To use the ezFile system, first-time users must create a user account. Please visit BETP's DEEP Energy Filing a?? New EZFile System page for more information on how to register, log-In, and create a subscriber agreement. The term "renewable energy" generally refers to electricity supplied from a?|



The journal, Renewable Energy, seeks to promote and disseminate knowledge on the various topics and technologies of renewable energy systems and components. The journal aims to serve researchers, engineers, economists, manufacturers, NGOs, associations and societies to help them keep abreast of new developments in their specialist fields and to apply alternative a?|



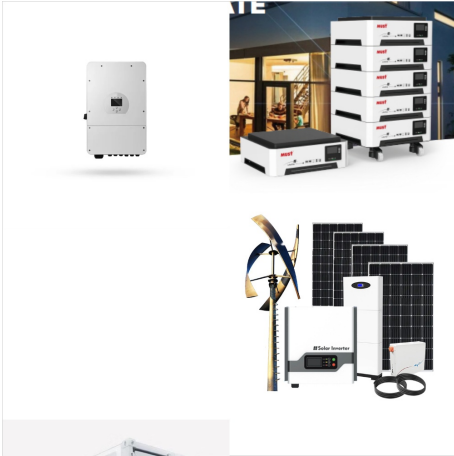
The Renewable Energy Portal. Renewable energy (or green energy) is energy from renewable natural resources that are replenished on a human timescale. The most widely used renewable energy types are solar energy, wind power, and hydropower.



IRENA helps analysts, policy makers and the public make informed decisions by providing access to comprehensive and up-to-date renewable energy data. IRENA publishes detailed statistics on renewable energy capacity, power generation and renewable energy balances.



Supplier REach is a new solution aimed at accelerating renewable energy adoption by helping suppliers overcome these challenges. Organizations that use Supplier REach will invite their suppliers to join the portal. Within the portal, suppliers can evaluate their options and source high-quality renewable energy tailored to their unique requirements.



Solar energy is a form of renewable energy, in which sunlight is turned into electricity, heat, or other forms of energy we can use. It is a "carbon-free" energy source that, once built, produces none of the greenhouse gas emissions that are driving climate change.



Wind energy is a form of renewable energy, typically powered by the movement of wind across enormous fan-shaped structures called wind turbines. Once built, these turbines create no climate-warming greenhouse gas emissions, making this a "carbon-free" energy source that can provide electricity without making climate change worse. Wind energy is the third a?|