

Renewable energy sources have been placed as the key to facilitating to provide source of electricity generation. Solar power is one of the most preferable one among renewable energy sources due



Our varied experience ensures we identify constraints and requirements early on in the site identification process, avoiding painful and costly delays. Below we share some crucial learnings, shedding light on the ???



Renewable energy technologies provide an exceptional opportunity for mitigation of greenhouse gas emission and reducing global warming through substituting conventional energy sources (fossil fuel based) (Panwar, Kaushik, & Kothari, Citation 2011).
3. Renewable energy sources and technology.

RENEWABLE ENERGY SITE IDENTIFICATION



THE U.S. RENEWABLE ENERGY SECTOR HAS ALREADY SEEN STRONG GROWTH . Over the past decade, renewable energy sources (renewables) have become an increasingly important part of the United States" energy mix. Between 2000 and 2020, overall renewable energy generation grew 91.2 percent, from 6.1 quadrillion British thermal units to 11.6. of energy.



renewable energy projects and off-site renewable energy purchases. The total amount of capital with environmental, social, and governance (ESG) commitments continues to increase, and by 2023, 80 percent of investors plan for ESG to be part ???



Hydropower is the major source of renewable energy in the world generating 16% of the global energy supply and more than half of all renewable electricity [3]. Gernaat et al. [4] estimated the remaining global potential of hydropower as 9.49 PW h per year, of which 39% is located in the Asia Pacific region.

RENEWABLE ENERGY SITE IDENTIFICATION



Office of Energy Efficiency & Renewable Energy
Operated by the Alliance for Sustainable Energy,
LLC This report is available at no cost from the
National Renewable Energy Marine Hydrokinetic
Energy Site Identification and Ranking Methodology
Part II: Tidal Energy Levi Kilcher, Robert Thresher,
and Heidi Tinnesand. Prepared under Task No .



The primary objective for deploying renewable
energy in India is to advance economic
development, improve energy security, improve
access to energy, and mitigate climate change.
Sustainable development is possible by use of
sustainable energy and by ensuring access to
affordable, reliable, sustainable, and modern energy
for citizens. Strong government ???



This paper serves as an introduction to the virtual
power purchase agreement (PPA)???its place in the
off-site renewable energy procurement market, how
the Virtual PPA works, and why Virtual PPAs have
been a popular instrument in the United States thus
far. Solar Site Identification and Site Data
Collection (pdf) EPA: Presentation: Project

RENEWABLE ENERGY SITE IDENTIFICATION



renewable energy resources exist where, and to what extent, is critical to scaling up commercial development. Renewable energy resource assessment that can be used for initial site identification purposes or to carry out pre-feasibility analyses.² Placing resource maps and the underlying datasets in the public domain



This report describes the Western Renewable Energy Zones (WREZ) Initiative Phase 1 Qualified Resource Area identification process, including the identification and economic analysis of Qualified Resource Areas (QRAs) and "non-REZ" resources. These data and analyses will assist the Western US in its renewable energy transmission planning goals.



Mapping the seafloor and subseafloor geology at a potential renewable energy site. The Pacific Regional Ocean Uses Atlas, Data and Tools for Understanding Ocean Space Use in Washington, Oregon and Hawai'i (2015) Identification of OCS Renewable Energy Space-Use Conflicts and Analysis of Potential Mitigation (2012)

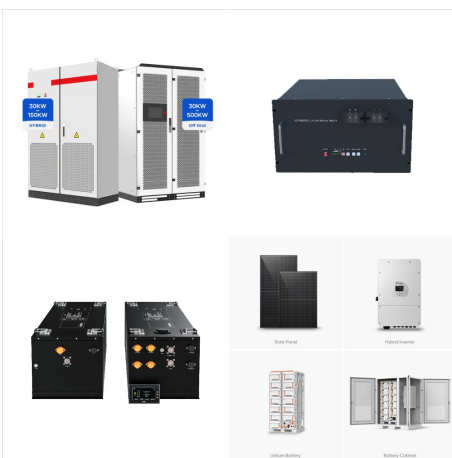
RENEWABLE ENERGY SITE IDENTIFICATION



What environmental claims can be made for an on-site renewable energy project if the project owner sells the RECs? Companies that install and own on-site renewable power systems can claim the use of green power from their projects. However, companies that choose to sell the RECs from their system to improve project economics give up the right



Identifying suitable land for renewable energy projects involves navigating technical, regulatory, and social challenges. Leveraging technologies like geospatial analytics and engaging with local communities are essential ???



In 2009, the Department of the Interior announced the final regulations for the Outer Continental Shelf (OCS) Renewable Energy Program, which was authorized by the Energy Policy Act of 2005 (EPAct). These regulations provide a framework for issuing leases, easements and rights-of-way for OCS activities that support production and transmission

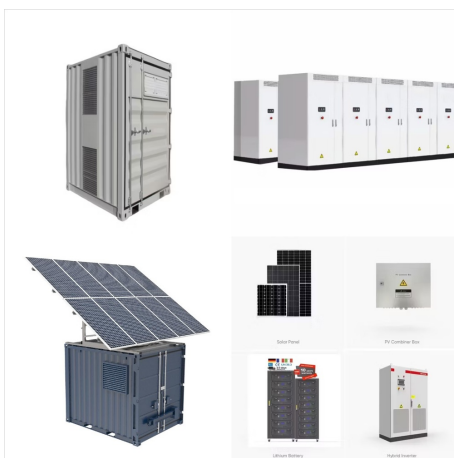
RENEWABLE ENERGY SITE IDENTIFICATION



The Renewable Energy Policy Review, Identification of Gaps and Solutions in Ghana Report was commissioned by the Energy Commission under the China-Ghana South-South Cooperation on Renewable Energy Technology Transfer (SSC RETT) with funding from the Government of Denmark. The Energy of Commission Energy of Ghana, the Ministry of



The pressing challenge of climate change necessitates a rapid transition from fossil fuel-based energy systems to renewable energy solutions. While significant progress has been made in the development and deployment of renewable technologies such as solar and wind energy, these standalone systems come with their own set of limitations.

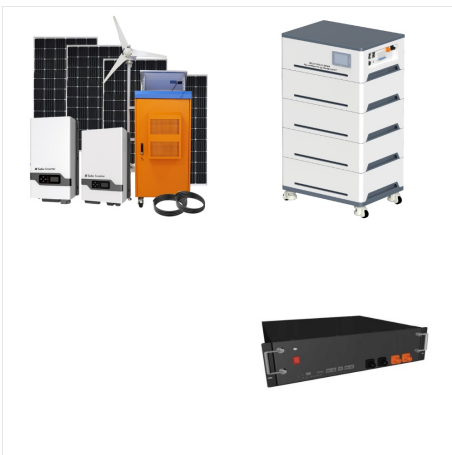


Renewable Energy Certificate (REC) Arbitrage (pdf) (363.53 KB) is a green power procurement strategy used by electricity consumers to simultaneously meet two objectives: 1) decrease the cost of their renewable electricity use and 2) substantiate renewable electricity use and carbon footprint reduction claims. The strategy is used by consumers

RENEWABLE ENERGY SITE IDENTIFICATION



The Renewable Fuel Standard program is a national policy, authorized under the Energy Policy Act of 2005 and further expanded under the Energy Independence and Security Act of 2007 that requires a certain volume of renewable fuel to be blended with petroleum-based transportation fuel, heating oil or jet fuel.¹ The EPA determines which fuels are

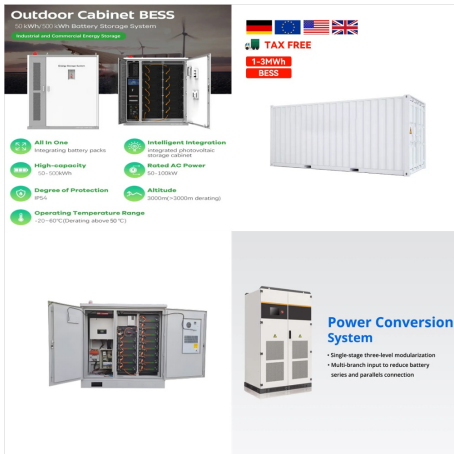


RECs offer a practical way to meet these goals without having to physically source renewable energy for on-site consumption. Renewable Energy Credits are a valuable tool in promoting and accelerating the adoption of renewable energy. By understanding and participating in the REC market, individuals and businesses can make a meaningful impact on



Renewable Energy Resource Development Plan 2021-2026 is going to be published through a gazette notification under the provisions given in Section 8 of the Sri Lanka Sustainable Energy Authority Act. As the project site identification and the initial studies related to project sites are specifically coming under the purview of SLSEA, this

RENEWABLE ENERGY SITE IDENTIFICATION



States have pursued a variety of approaches to site and approve renewable energy projects. In this report, E3 evaluated the different policy frameworks in eight states: California, Illinois, Indiana, Maine, New York, Ohio, Virginia, and Washington. (tax identification number 53-0242652) under Section 501(c)(3) of the U.S. Internal Revenue



EPA's RE-Powering Mapper, an interactive web application, allows users to identify contaminated lands, landfills and mine sites for renewable energy development. Using renewable energy criteria developed in collaboration with the National Renewable Energy Laboratory (NREL), EPA has pre-screened over 190,000 sites for their renewable energy

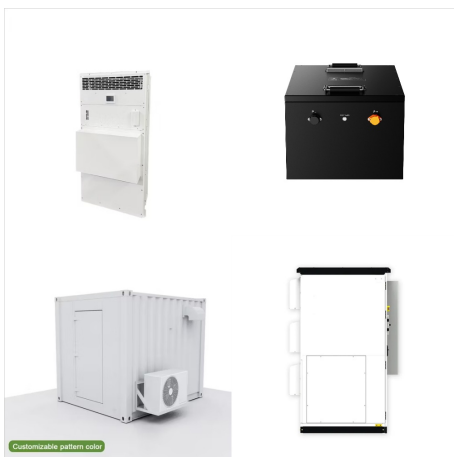


NREL is a national laboratory of the U.S. Department of Energy, Office of Energy Efficiency & Renewable Energy, operated by the Alliance for Sustainable Energy, LLC. National Renewable Energy Laboratory 15013 Denver West Parkway Golden, Colorado 80401 303-275-3000 ??? Contract No. DE-AC36-08GO28308 . A Framework for Project

RENEWABLE ENERGY SITE IDENTIFICATION



"The Nature Conservancy's Site Renewables Right map is an excellent example of data capture that helps organizations make informed business decisions when evaluating renewable energy projects. Projects that ???



Fast Facts About Renewable Energy. Principle Energy Uses: Electricity, Heat Forms of Energy: Kinetic, Thermal, Radiant, Chemical The term "renewable" encompasses a wide diversity of energy resources with varying economics, technologies, end uses, scales, environmental impacts, availability, and depletability.



Site Identification and Data Collection Minnesota Solar Energy . Procurement Workshop. Minneapolis | September 18, 2019. Project Development Process. 1. Identify Project Lead & Convene Stakeholders 2. Goal Setting Solar Energy, Site Identification, Data, Renewable Energy Created Date: