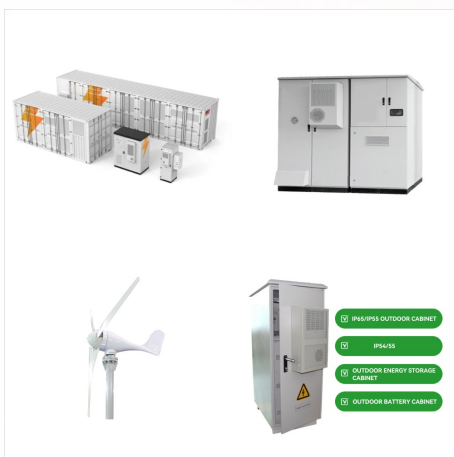




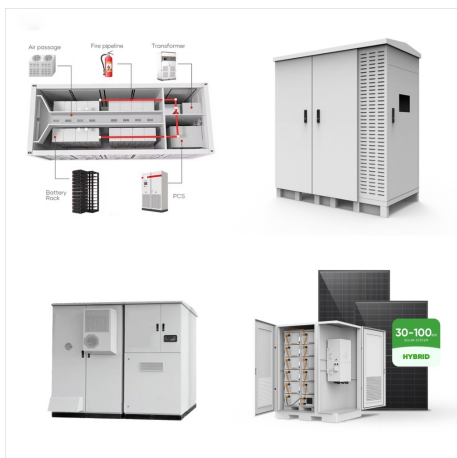
Amazon : REOLINK 4K Solar Security Cameras  
Wireless Outdoor, 360° Pan Tilt Solar, 8MP Color  
Night Vision, 2.4/5 GHz Wi-Fi, No Monthly Fee,  
Home Hub Compatible, Argus PT 4K+ 6W Solar  
Panel (Black) : Electronics The camera works on  
2.4/5GHz WiFi and continuously powered by the  
new 6W solar panel, freeing you from frequent  
battery



Added Reolink Solar Panel makes sure it never runs  
out of juice, providing more charging options. Note:  
Do not support 24/7 recording and WiFi Connection.  
2K SUPER HD & 33FT NIGHT VISION: With 4MP  
resolution, this wireless security camera captures  
sharp, clear footage for more visual details. Its  
infrared LEDs provide superior image quality for



Reolink Go PT Ultra is a 4K 8MP 4G LTE wireless  
camera, battery/solar powered, featuring 355° pan  
° 1/4 ° 140° tilt, smart detection, color night vision,  
two-way audio, etc. Solar Panel. With the 6W  
Reolink Solar Panel 2, about 10 minutes of charging  
can provide sufficient power for regular daily usage.  
By adjusting the panel angle as needed



There're several possible causes for Reolink Solar Panel to stop charging Reolink battery-powered cameras, please follow the steps below to troubleshoot the issue. Unplug and re-insert the charging cable. Ensure a stable connection between the solar panel and the camera.



Reolink Go PT Ultra+Solar Panel 2: Special Feature: Easy to Install: Indoor/Outdoor Usage: Outdoor: About this item . Incredible 4K Images Day & Night: The first-ever 4K 4G camera can capture clear images and videos with rich details. Even in the deep night, the color vision and clarity on the screen won't compromise a little.



REOLINK 6W Solar Panel White, Non-Stop Solar Power Supply for All Wireless Battery Camera, Trackmix/Argus PT/Go PT Ultra, Waterproof, Adjustable Mount, 4 Meters Cable(Only Use for Battery Cameras) \$39.99 \$ 39. 99. Get it as soon as Thursday, Nov 7. In Stock.



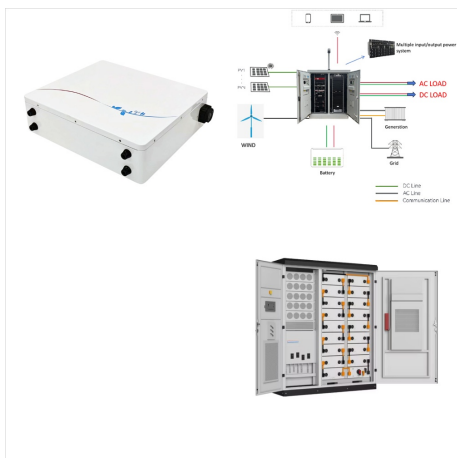
100% Wire-Free and Solar Powered: Argus PT runs on 2.4/5 GHz WiFi and stays fully-charged with Reolink Solar Panel which realize 100% wire-free security. With high-capacity battery, long-lasting power per charge and no worry about weather. Tilt & Pan and Stunning Night Vision: Argus PT can turn its head 355° horizontally and 140° vertically



The price tag for solar power panel kit for security camera, like quality solar panels and deep cycle battery/car batteries could be a few hundred bucks, ranging from \$400 to \$1k+, especially like solar-powered 3G/4G/LTE cellular security cameras, which will entail cellular service charges like \$80 per month, or solar-powered CCTV kits.



For other Reolink Go Plus supported mobile network service providers" users, we highly suggest purchasing a Reolink Solar Panel to go with it for continuous power. Also, for more stable network signals, we strongly recommend using 4G LTE instead of ???



Reolink Solar Panel. Connect your Reolink solar powered camera to this solar panel with 4m connection cable (included) to get non-stop power. (Download Quick Start Guide) 4.5m Reolink Solar Panel Extension Cable provided



Reolink Solar Panel. Connect your Reolink Argus 2/Argus Pro/Argus Eco/Reolink Go to this solar panel and it will get non-stop power. The 360° wall mount allows you to easily position the weather-resistant solar panel and ensure that it's perfectly positioned to maximize sunlight exposure.

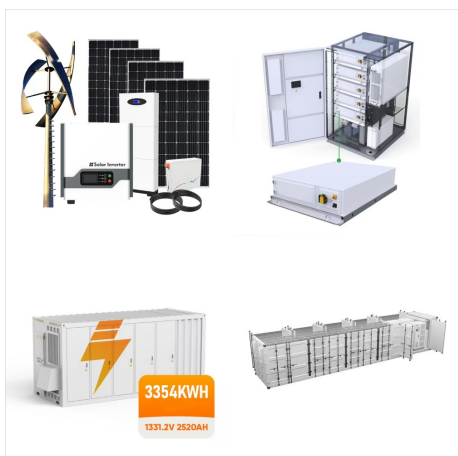


Argus PT is a 5MP battery/solar powered IP camera with pan & tilt, dual-band Wi-Fi, high-quality color night vision, AI detection, smart alarms and more. Get the Reolink app for free on your phone or use the client software on your computer. free from the constraints of power cables, with solar panels providing sustainable energy for





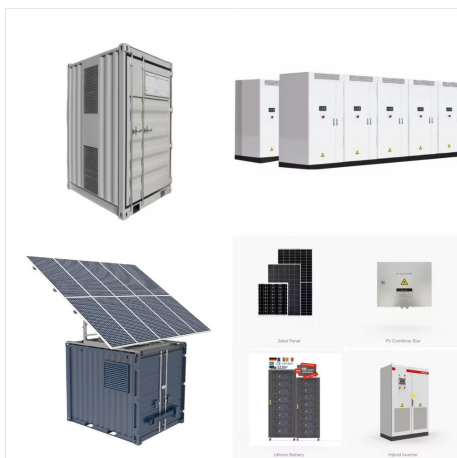
The Reolink solar panel only needs a few hours of direct sunlight to sufficiently power your camera daily. The amount of energy that the solar panel can produce is affected by weather conditions, seasonal changes, The Ideal Angle = The Local Latitude + 5? geographic locations, etc. 4. Loosen the adjusting control



Working with the solar panel, a Reolink battery camera can get non-stop power from renewable energy. Solar cameras with higher energy efficiency. More applicable situations. Longer battery life. Turns from motion recording to 24/7 recording. ???



Reolink claims that the 6W solar panel can charge up to 35% of the battery with just one day of sunshine. However, we found that the solar panel actually contributed very little ???



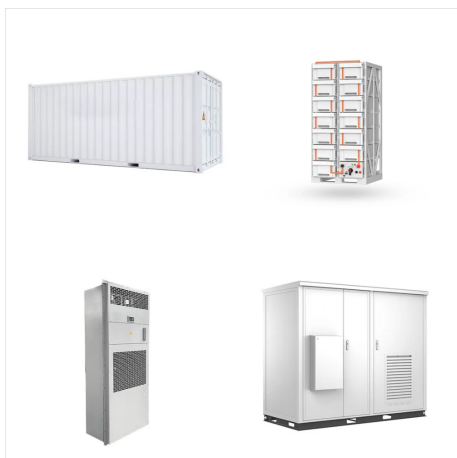
With a Reolink solar panel (sold separately), you no longer need to worry about the battery life or go through the trouble of charging or changing the battery for months. You can also manually adjust the solar camera settings via mobile app to get color images/videos at night, so you can pinpoint the color of the clothing of a suspect or a get



Solution: Make sure that your Reolink Solar panel is pointed toward the sun and is not obstructed by trees, buildings, or other obstacles. Refer to How to Use Solar Panel Effectively Cause 3. Inappropriate temperature Solution: Make sure that your camera is not working in temperatures below 0°C (32°F) or above 60°C (140°F). Cause 4. Extensive use



Like high-quality battery camera, Reolink Argus 4 Pro, lasts for about 2 months per charge (under the condition that the camera records 300s per day). When the battery level goes down to 10%, the camera will send you a low-battery notification. For non-stop power supply, you can connect the camera to a Reolink Solar Panel.



Solar. Reolink Solar Panel. DC Power. 5V/2A USB power adapter. Storage. Local Storage. Supports up to 128GB microSD card. Cloud Storage. Supports Reolink Cloud (available in some countries) Working Environment. Operating Temperature-10°C to 55°C (14°F to 131°F) Weather Resistance. IP65 weatherproof.



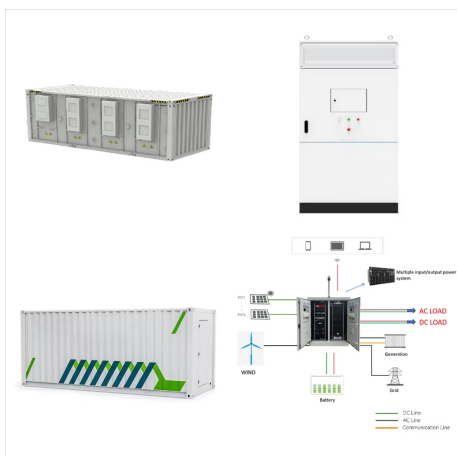
The Reolink solar panel only needs a few hours of direct sunlight to sufficiently power your camera daily. The amount of energy that the solar panel can produce is affected by weather conditions, seasonal changes, geographic locations, etc. The Northern Hemisphere The Ideal Angle = The Local Latitude + 5°



Slot the solar panel into the bracket and make sure that it is secure. Step 4. Loosen the adjustment knob on the bracket, and adjust the angle of the solar panel to receive the most direct sunlight. Then re-tighten the adjustment knob to secure the panel. Step 5. Connect the solar panel to the Reolink battery-powered camera with the micro USB



Powered by the Reolink Solar Panel that can be adjusted for maximum sunlight exposure, Argus Eco stays on without the hassle of recharging the battery. Install the camera in 3 simple steps for non-stop monitoring. Step 1. Download the Reolink App and scan the QR code on your camera to finish initial setup.



6W Solar Panel 10 minutes of charging a day for 24/7 Use (based on 300s in PIR Trigger Mode)  
Reolink Altas PT Ultra - The best solar powered 4K WiFi camera? LifeHackster. Wireless Battery/Solar Security Camera w/ Continuous Recording - Reolink ???



Argus 2 comes with a rechargeable battery, which allows you to charge directly via an outlet or via Reolink Solar Panel. Long lasting power per charge - saves your money. \* Comes with the camera and is designed for Argus 2 and Argus ???





Reolink Go PT Plus is a 2K+ 5MP 4G LTE wireless camera, battery/solar powered, featuring 355° pan / 1/4° / 140° tilt, smart detection, spotlight color night vision, two-way audio, etc. \*The camera can be set up with or without a bracket for the solar panel. You can attach the panel directly to the camera or place it alone at a distance to