

What is a solar shingle?

A solar shingle is meant to provide homeowners with an affordable, aesthetically pleasing solar energy panel that doubles as a weatherproof, protective roof shingle. Solar shingles are functionally similar to solar panels, with the primary goal of converting sunlight into electricity.

What are solar shingles & roof tiles?

Solar shingles and roof tiles are intended to replace normal roofing materials with roof shingles that generate electricity. They still function as roofing materials, being fire resistant and providing protection during storms. They cost more compared to traditional solar panels, but provide the same power output.

What is the difference between solar shingles and solar panels?

Although solar panels are mounted on your roof (or on your property), solar shingles function as your roof, providing shelter from the elements and producing solar electricity. Here's how these two technologies stack up. Winner: Solar panels Solar panels use an older technology and are less expensive to purchase upfront than solar shingles.

Can solar shingles be used with a new roof?

Solar shingles can be integrated with your existing roof or used in place of a new roof, so they blend in more seamlessly with your home. Solar shingles are significantly smaller than standard solar panels. Since they're meant to cover or replace traditional asphalt shingles, they're usually 12 inches wide by 86 inches long.

How efficient are solar shingles?

The average solar shingle efficiency rating is around 19 to 20%. But it is lower than some of the most efficient solar panels on the market. Keep in mind that since solar shingles are installed as part of your roof, they can't be angled like solar panels, which can be adjusted for optimal sun exposure.

Are solar roof shingles a long term investment?

Solar roof shingles are a long term investment. Weighing the pros and cons is important, especially since you'll be paying more than traditional solar panels. Doing research and knowing the ins and outs is a must before making a final decision. Solar shingles and roof tiles have a low profile and blend in with the home.

# RESIDENTIAL SOLAR POWER SHINGLES



In contrast, a residential solar system cost is about \$20,498 on average. Specific costs will depend on your energy needs, and many other factors. As with solar roof panels, solar shingles will also increase the value of your home. While the exact value depends on a variety of factors, including comparable homes in your area, home buyers



Solar power shingles are also known as BIPV (building-integrated photovoltaics) or photovoltaic shingles. We are a South Carolina based roofing company that repairs and replaces residential and commercial roof styles from storm and hail damage. Facebook Twitter Instagram Linkedin. Contact Info +1 (864) 686-4050;



According to the Solar Energy Industries Association, the residential solar market grew 40% in 2022 over 2021, But looks are obviously not the only consideration when it comes to solar roofing. Power generation is often the primary concern for most homeowners. The Solstice shingle system is the pinnacle of energy production, using high

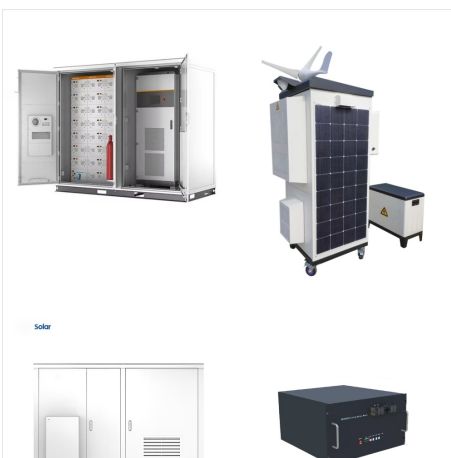
# RESIDENTIAL SOLAR POWER SHINGLES



Solstice Shingle is backed by CertainTeed's industry-leading warranty covering the performance of the solar panels and the integrity of the shingles. Including a 25-year limited power output warranty, a 25-year limited workmanship warranty, and a 10-year 110-mph limited wind warranty, homeowners can be confident in the long-term performance



At Preman Roofing-Solar, San Diego's Preferred and Trusted Roofing and Solar Company since 1999, we are dedicated to making sure each solar power roofing service is completed with the utmost precision and care. ??? A reason why we are one ???



For solar shingles or panels, the most important specs to watch are:

- Efficiency: How well a solar panel captures sunlight and converts it into electricity for your home, expressed as a percentage (i.e., 22.2%). The higher, the better.
- Temperature coefficient: How well your solar panels perform in less-than-ideal conditions, expressed as a percentage per degree (i.e., ???)

# RESIDENTIAL SOLAR POWER SHINGLES



Both solar panels and solar shingles use sunlight to generate electricity. The biggest differences are in aesthetics, performance and cost. Sarah specializes in residential solar power, solar



Solar shingles, on the other hand, can range from \$3.50 to \$8.50 per watt. Solar shingles also cost more to install, as installers must often replace all or part of the roof. Understanding the financial implications is crucial when ???



Though commercial solar power is expected to grow around 2 GW per year from 2021-2025, household or residential solar power is another major renewable energy revolution player. For most people, residential solar power is about placing solar panels on your roof, garage, or other areas where you receive abundant amounts of sun. The number of



# RESIDENTIAL SOLAR POWER SHINGLES



Despite the difference in form factor between solar panels and energy shingles, their core function is the same: GAF Energy's Timberline Solar represents the beginning of a new era in residential solar???one where BIPV roofing will transition from a niche to a mainstream option that many homeowners will choose for their new roof. Opting



Proven track record with over 10 years of installations and 500,000+ shingles installed; SunStyle is a well-established solar roof shingle manufacturer that offers building-integrated photovoltaic (BIPV) roofs, inspired by traditional Swiss alpine slate shingles. With over ten years of installations and 500,000+ shingles installed, they provide an incredibly efficient ???



The technology, also known as solar roof tiles, was pioneered by Dow Chemical and further innovated by Tesla. A solar shingle is meant to provide homeowners with an affordable, aesthetically pleasing solar energy panel that doubles as a weatherproof, protective roof shingle.

# RESIDENTIAL SOLAR POWER SHINGLES



Most solar shingles on the market cost more than the average value of solar panels in the U.S. Tesla solar shingles are probably the cheapest at \$1.8 per watt but the average goes between \$3.8 and \$7 per watt.



Omniya Solar has the solutions you need to save money. Our team headquartered in West Deptford, NJ has over 15 years of experience completing residential solar, industrial solar, and commercial solar installations. You can experience the convenience of solar power in your home, or protect your business with our roofing services.



Solar shingles are emerging as an alternative to solar panels for residential solar power systems. Learn about their benefits, disadvantages & how they work. Solar Panels: Solar Shingles: Average Size per Unit: 39 inches by 65 inches (990mm x 1,651 mm) 12 inches by 86 inches (300 mm x 2,180 mm)

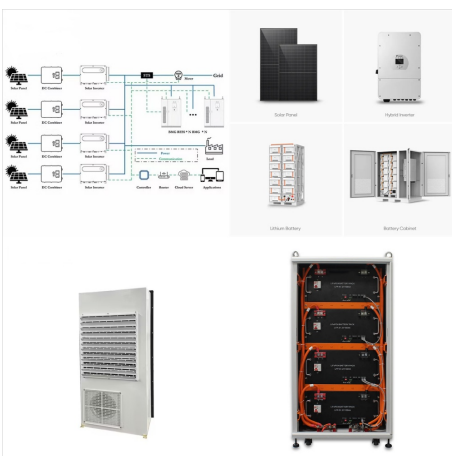
# RESIDENTIAL SOLAR POWER SHINGLES



We provide solar panels and solar shingles Kansas City, MO can trust for incredible results. Contact us today to get a free estimate., Get A Free Quote (816) 469-5067. Solar Panels; Solar Shingles; Solar for Residential; Solar for Commercial; Benefits of Solar; Solar Financing; Volta Roofing; Reviews; About. Blog; FAQ; Customer Resources.



The integrated solar roof has long been a solar technology goal ??? combining solar power with a watertight roof covering ??? but the category (often seen as just "solar shingles") is perceived as too expensive or too experimental compared to the cost of separately installing solar and a traditional roof using time-tested concepts



Solar shingles are often made from the same semiconductor material as most thin-film solar panels, which is copper indium gallium selenide. This material typically has 12-14% efficiency. Most standard residential solar panels are instead made of monocrystalline silicon, which has efficiency closer to 20%.

# RESIDENTIAL SOLAR POWER SHINGLES



The solar solutions offered by SPG Roofing & Exteriors include solar panels and solar shingles. Our team can handle the installation of any solar solution you're looking for. As an end-to-end provider for the sale and installation of solar panels, we are striving to become the top solar solution experts in the state of Indiana.



Composition shingles also stand out as the most compatible with solar installation due to several factors, including the easy attachment of solar roof mounts and the longevity of the roofing material itself. Before installing a solar array, a thorough roof inspection is necessary to ensure that the roof can support the weight of the modules.



Water-shedding and warranted. Timberline Solar??? is made up of shingles, not panels or heavy tiles. These shingles are water-shedding, strong and warranted to withstand winds up to 130 mph. Rack-mounted solar installations???where the solar is separate from the roof???require the drilling of dozens of holes into the roof membrane. Any resulting damage related to those holes is not ???



# RESIDENTIAL SOLAR POWER SHINGLES



Generate your own clean energy whenever the sun is shining with Tesla solar panels. Power everything from your TV to the internet with solar energy. Save excess solar energy in Powerwall for use during storms and outages, or when utility prices are high. Charge your electric vehicle with clean energy at home using Mobile Connector or Wall