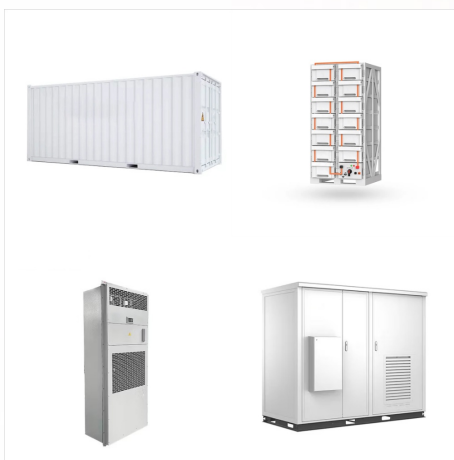




Located in Engineering Building 1, the Science and Engineering Research Center (SERC) and in the newly constructed Agrawal Engineering Research Building (AERB), our faculty have built state-of-the-art research laboratories. We invite you to explore some of our exceptional research facilities and laboratories.



Normally, the main objective of this kind of lab is the study and design of a process that works well in different technologies. Production labs are very common in industries such as biotechnology, technology and pharmaceuticals, for example. 5. Research and university Labs. Research and university laboratories focus on either science or



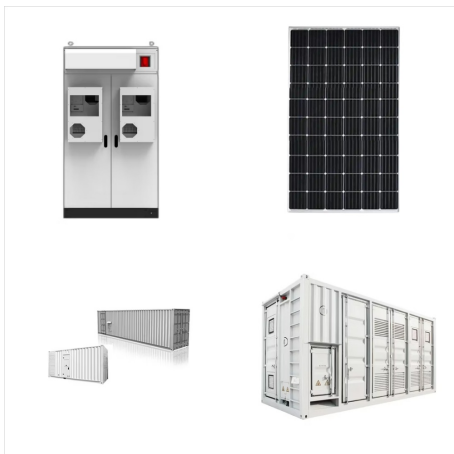
? The lab has formed an academic partnership with a computer science research lab at Notre Dame University to investigate the intersection of AI and law through joint research ???



Alcohol Research Lab. Cognition and Brain (CAB)  
Lab. Cultural and Social Behavior Laboratory.  
Personality Assessment and Development Lab.  
Infant Cognition Lab. Attachment & Close  
Relationships Lab. Control & Network Connectivity  
Team (CONNECT) Lab. SCoPE Neuroscience Lab.  
Project on Life Experiences Lab.



Learn more about Merck's Research &  
Development division. Explore current job  
opportunities within Research & Development at  
Merck. Want to be part of the premier  
research-driven biopharma company? Join Merck's  
Research Development team and ???



RESEARCH LAB FINE CHEM INDUSTRIES has  
become a well-known name in the field of Fine  
Laboratory Chemicals, Stains, Indicators, Solvents  
of LR/AR, HPLC, GC, Molecular Biology grades with  
more than 39 years of expertise to cater to the  
needs of a wide range of customers from all sectors  
of scientific industry ing small enough to care, yet  
large enough to cope, " ???



The Franklin Research Lab The Franklin Research Lab (FRL) employs optics, engineering, and biology to produce the next generation of devices for fundamental medical science and clinical translation. We partner with industry leading semiconductor companies and hospitals to develop and leverage new sensor technologies. We believe that Wearable



The Computational Language Understanding Lab is a team of faculty, students and research programmers who work together to build systems that extract meaning from natural language texts, including question answering (answering natural language questions), information extraction (extracting specific relations and events), semantic role labeling (extracting semantic frames ???



Oak Ridge National Laboratory is the world's premier research institution, empowering leaders and teams to pursue breakthroughs in an environment marked by operational excellence and engagement with the communities where we live and work. ORNL provides access to unique facilities, laboratories, and equipment, drawing thousands of visiting



The mission of the Cape Town HVTN Immunology Laboratory is to determine vaccine-induced immunity in African populations using high-quality assays conducted according to Good Clinical Lab Practice standards. The laboratory is committed to training African scientists in cutting-edge clinical laboratory research and to collaborate with the scientific community to discover novel ???



These days, a lot of networking is done online. Get on Twitter and follow your 10 favorite research labs. Look at who they follow to find more connections. Tweet about the work you publish and interesting papers you read to help people identify your niche and get to know your research brand.



As one of the world's top research institutions, our entire health system is built on groundbreaking discoveries. But there's more to it than that. It's personal to us at Penn Medicine, because our work is inspired by real people, their stories and even their DNA. We never forget that what we do in a test or in a lab ultimately saves lives.



The AID Lab will focus on: ??? collaboration: building research-oriented alliances and partnerships with various national and international labs and organizations; ??? funding: attract national and international research funding by assembling competitive of research teams;



The Dr. A. Q. Khan Research Laboratories (shortened as KRL), [2] is a federally funded research and development laboratory located in Kahuta at a short distance from Rawalpindi in Punjab, Pakistan. Established in 1976, the laboratory is best known for its central role in Pakistan's nuclear weapons program and its understanding the nuclear science. [3]

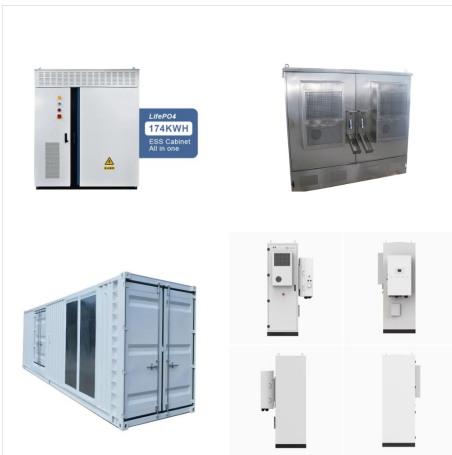


Game Lab; Games Research Lab (Tim Christopher and Monica Evans) LabSynthE (Xtine Burrough and Frank Dufour) Mograph Lab (Eric Farrar) Motion Capture Lab (Adam Buxkamper) Narrative Systems Research Lab (Monica Evans) Public Interactives Research Lab (PIRL) (Anne Balsamo and Heidi Rae Cooley) The Studio for Mediating Play (Dr. Josef Nguyen and Dr

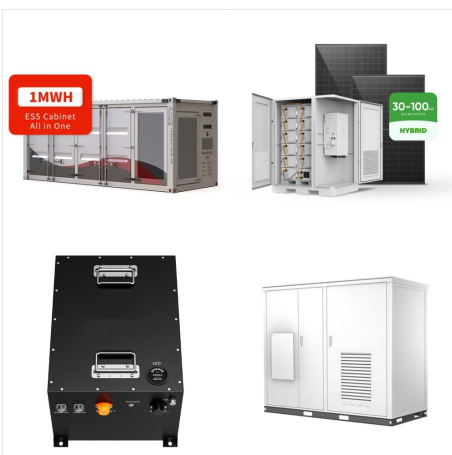




The Digital Forensic Research Lab is a first of its kind organization with technical and policy expertise on disinformation, connective technologies, democracy, and the future of digital rights. Read the DFRLab's latest case studies, learn about our initiatives, and more at DFRLab . Check it out.



What is Lab Research? Lab research is how psychological scientists make discoveries. When you work in a lab, you can expect to be involved in all aspects of the experimental research process: completing administrative tasks that keep the lab and its research projects running, reading and reviewing literature, collecting, coding and analyzing



PLACE Research Lab School of Public Health  
University of Alberta 3-300 Edmonton Clinic Health  
Academy 11405-87 Avenue Edmonton, Alberta  
CANADA T6G 1C9. [placeresearchlab@ualberta.ca](mailto:placeresearchlab@ualberta.ca)  
\*Note: The PLACE team is working remotely during COVID-19, so please reach out to us via email.  
Social Media.



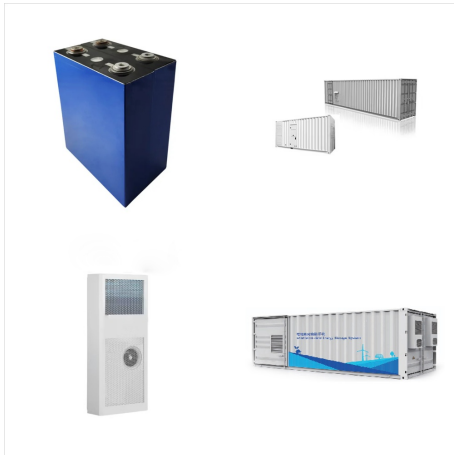
Lab Sites Advanced Resuscitation in Combat Casualty Care (ARC3) Laboratory. The ARC3 Laboratory collaborates with the Air Force Research Laboratory (AFRL) to support operationally relevant research. Its mission is supported through infrastructure, lab space, and collaborative relationships to promote the integration of military and civilian



With over 40 research labs within the Department of Pathology the research interests and activities of our faculty cover a broad range spanning from breakthrough discoveries to transformative diagnostics. The scope of research from basic mechanisms in molecular and cell biology to clinical trials is a major strength of Stanford Pathology. Our



Molecular and Cellular Biology Research Labs. Master. Media Component. Media. Content. At the heart of the world's largest health sciences complex, the Texas Medical Center and Baylor College of Medicine offer resources and opportunities unmatched anywhere. The Department of Molecular and Cellular Biology is thrilled to shine a spotlight on



The Jackson Laboratory is an independent, nonprofit organization focusing on mammalian genetics research to advance human health. Our mission is to discover precise genomic solutions for disease and empower the global biomedical community in the shared quest to ???



Find a research lab with a name beginning with the letter Z Z; A. Advanced Endoscopy Innovation Translation and Clinical Trials Group: Barham Abu Dayyeh; Advanced Medical Imaging Technology: Richard L. Ehman; Aerospace Medicine and Vestibular Research: Michael J. Cevette, Jan Stepanek;



Research & Impact. Research Centers; The Current Page is Laboratories, Projects and Programs. Applied Environmental Microbiology and Exposure Assessment Laboratory; Behavioral Epidemiology and Community Health Laboratory (BEACH)