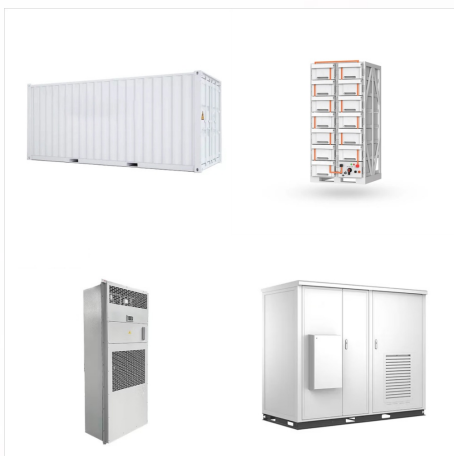




Facts about South Georgia and the South Sandwich Islands. South Georgia Island is the largest of these islands, at about 167 kilometers (104 miles) long and ranging from 1.4 to 37 kilometers (0.0 to 23 miles) wide. All the ???



South Georgia and the South Sandwich Islands (SGSSI) is a British Overseas Territory in the southern Atlantic Ocean. It is a remote and inhospitable collection of islands, consisting of South Georgia and a chain of smaller islands known ???



The strategy has also been developed in conjunction with the Government of South Georgia and the South Sandwich Islands, who will also publish, on their website, their own complementary 5-year

ROTEX SOLAR SOUTH GEORGIA AND SOUTH SANDWICH ISLANDS



The Antarctic Treaty of 1962 resulted in a separation of the British Antarctic Territory from the UK Dependencies. South Georgia then received its first stamps. In 1985 the Falkland Islands Dependencies ceased to exist and South Georgia & the South Sandwich Islands came into existence as a UK overseas territory.



(South Georgia and South Sandwich Islands)???, 1982???

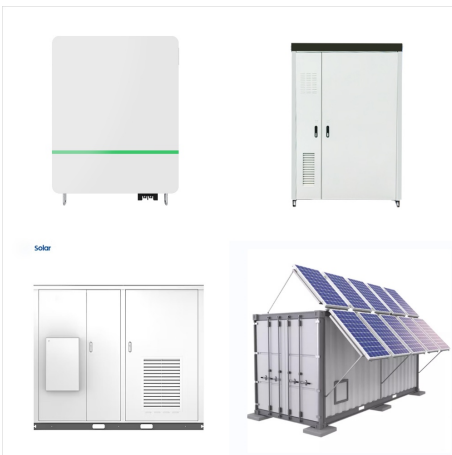


South Georgia is inhabited by less than 50 people and leaving no trace is a guiding principle. Most expeditions will not visit the sandwich islands group due to their remoteness. The Sandwich Islands are uninhabited and ???

ROTEX SOLAR SOUTH GEORGIA AND SOUTH SANDWICH ISLANDS



South Georgia and the South Sandwich Islands
Cruises to Antarctica, Polar Travel With Cool
Antarctica and Antarctica Travels Notes * Prices are
per person. the lowest price is usually for triple
occupancy in a basic cabin, the highest for double
occupancy in the best available suite. Options such
as kayaking are usually booked when the cruise is
booked, they may be at ???



Frequently asked questions. Want to know about
travelling to South Georgia and the South Sandwich
Islands? We have put together a list of the most
frequently asked questions from our users such as:
What is the cheapest mode of transport?, What is
the quickest option?, How much do tickets usually
cost? and many more.



South Georgia South Georgia and its associated
smaller offshore islands, islets and stacks lie
between the parallels of 53°00'S and 55°00'S,
and between the meridians of 34°30'W and
42°00'W. These islands are very isolated, lying
about 870 miles (1,400 km) east-south-east of the
Falkland Islands, 963 miles (1,550 km) north-east of

ROTEX SOLAR SOUTH GEORGIA AND SOUTH SANDWICH ISLANDS



The Islands. South Georgia lies 1300 km SE of the Falkland Islands, and the South Sandwich Islands (SSI) a further 760 km SE, both between latitudes 53° 58' ??? 54° 53' S and longitudes 35° 47' ??? 38° 01' W. The territory comprises ???



The South Georgia and South Sandwich Islands Marine Protected Area (SGSSI-MPA) is one of the world's largest MPAs, covering an area of 1.24 million km² (an area 5 x larger than the UK). It was established in 2012 with the aim of conserving the rich marine biodiversity within the Territory's maritime zone and provides a framework for our marine environmental management ???



1 South Georgia Island is the only inhabited island, with the summer-only settlement of Grytviken, and the only one regularly visited by cruise ships. Minor islands are ranged along its north coast ??? those visited by cruises are Willis, Bird, Albatross and Prion, and Cooper. The south coast is exposed to raging winds and waves and is seldom visited ??? Annenkov is the only large island ???

ROTEX SOLAR SOUTH GEORGIA AND SOUTH SANDWICH ISLANDS



With 11 main islands and several smaller islets, the South Sandwich Islands are also part of the South Georgia British Overseas Territory, despite lying around over 700-kilometres southeast. Volcanic in origin, this island chain is incredibly inhospitable and consists of numerous perilous peaks, some of which remain active while others are snow-capped and heavily glaciated.



The government of South Georgia and South Sandwich Islands took further steps in 2018 after an environmental review to fully protected 23% of its waters. However, the rest of the area remained open to industrial fishing, which would disrupt food availability and the interconnected food web. Additionally, since the 2018 review, the impacts of

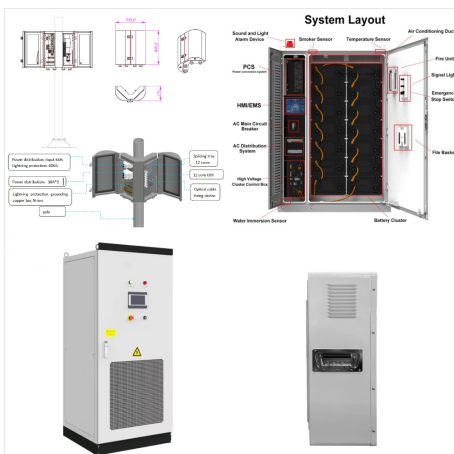


Summary. Welcome to our South Georgia & Antarctic Odyssey featuring the South Sandwich Islands expedition.. On this epic voyage, not only will you explore the famed white continent, discover the Falklands~Malvinas, encounter the wildlife haven in South Georgia, you will also sail to the South Sandwich Islands, a chain of seldom-visited volcanic islands located 740 km (460 ???

ROTEX SOLAR SOUTH GEORGIA AND SOUTH SANDWICH ISLANDS



? 1/4 ?? 1/4 ?South Georgia and The South
Sandwich Islands,? 1/4 ?SGSSI? 1/4 ?,,???
56?18???-59?30??????26?-28?30???,,???



Winter, from June to August, brings extreme conditions to the South Georgia and the South Sandwich Islands. With average temperatures oscillating between -2°C (28.4°F) and 2°C (35.6°F), the islands experience intense cold, frequent snowstorms, and strong winds, with speeds reaching up to 40km/h (24.9mph).



in South Georgia and the South Sandwich Islands
??? ??? 2 $^{\circ}\text{C}$ Die Durchsage kommt 10 min fr?her
als sonst, da ein Buckelwal gesichtet wurde.
Steigen mit halb offenen Augen in die Klamotten um
kurz darauf mit Kameras auf das Meer zu sp?hen.

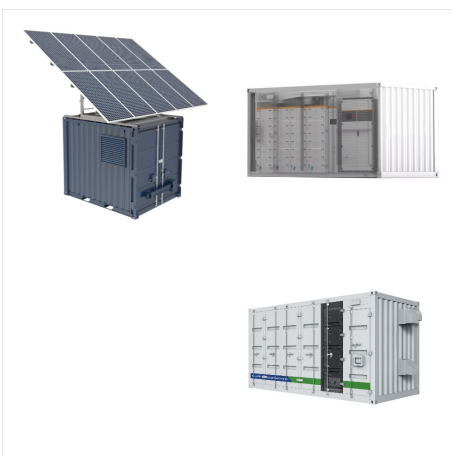
ROTEX SOLAR SOUTH GEORGIA AND SOUTH SANDWICH ISLANDS



The South Atlantic island of South Georgia, situated south of the Antarctic Convergence, was the first Antarctic territory to be discovered. [1] It was first visited in 1675 by Antoine de la Roch?, an English merchant born in London to a French father. [2] He left Hamburg in 1674 as a passenger on a 350-ton vessel bound for Peru. [3] During the return journey, it was en route to Salvador in ???

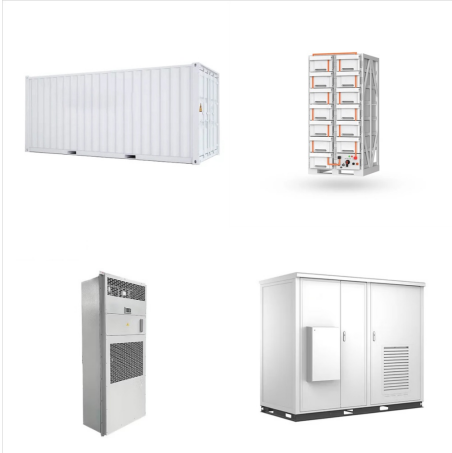


South Georgia and The South Sandwich Islands :
Stamps : Years List : Colnect. Buy, sell, trade and exchange collectibles easily with Colnect collectors community. Only Colnect automatically matches collectibles you want with collectables collectors offer for sale or swap. Colnect collectors club revolutionizes your collecting experience!



Summary. Welcome to our South Georgia & Antarctic Odyssey featuring the South Sandwich Islands expedition.. On this epic voyage, not only will you explore the famed white continent, discover the Falklands~Malvinas, ???

ROTEX SOLAR SOUTH GEORGIA AND SOUTH SANDWICH ISLANDS



South Georgia & the South Sandwich Islands is a British Overseas Territory in the southern Atlantic Ocean. Stunningly beautiful and rugged, this island wildlife sanctuary, once visited, is not easily forgotten. Its snow covered peaks, blue ???



Government of South Georgia & the South Sandwich Islands. NEWS. Latest News; Newsletter Archive; VISITORS. How to Visit; Visitor Policy & Risk Awareness; Stanley, Falkland Islands, South Atlantic, Tel: +500 28200 Fax: +500 28201 Contact Us: [here](#). Links. Sitemap About SGSSI SG Newsletter Visit South Georgia

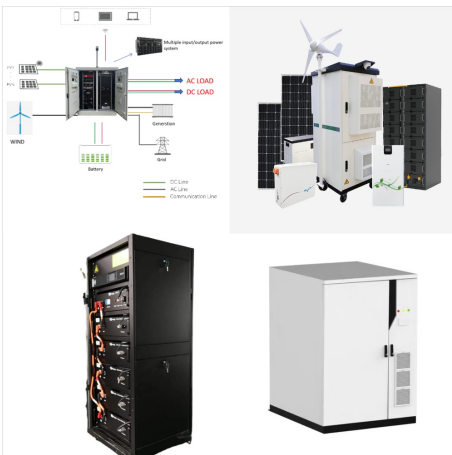


1. South Georgia is not part of Antarctica. South Georgia and the South Sandwich Islands are a chain of sub-Antarctic islands in the Southern Ocean. They are located more than 2,000km from the continent of Antarctica but the reason many people associate the two is that many cruises to Antarctica also stop by South Georgia.. 2.

ROTEX SOLAR SOUTH GEORGIA AND SOUTH SANDWICH ISLANDS



Perched like small dots in the middle of the South Atlantic Ocean between South America, Africa, and the continent of Antarctica, South Georgia and the South Sandwich Islands have limited territory and a tiny population. ???



South Georgia and the South Sandwich Islands are a chain of Subantarctic islands in the Southern Ocean surrounding Antarctica. The islands are an overseas territory of the United Kingdom: they have no permanent residents ???



South Georgia and South Sandwich Islands weather. Find a forecast. Search for a place, autocomplete also includes a "Use my location" option and your recent locations Search. Please choose your location from the nearest places to : Suggested places. ???

ROTEX SOLAR SOUTH GEORGIA AND SOUTH SANDWICH ISLANDS



Grytviken - One of several former whaling stations in South Georgia. Understand . South Georgia and the South Sandwich Islands are rugged islands, rising out of the Southern Ocean. There are no indigenous residents, ???



South Georgia is an island in the South Atlantic Ocean that is part of the British Overseas Territory of South Georgia and the South Sandwich Islands. It lies around 1,400 kilometres (870 mi) east of the Falkland Islands. Stretching in the ???



South Georgia and the South Sandwich Islands.
Published: September 2018. Citation:
UNEP-WCMC. 2018, A review of terrestrial protected areas: South Georgia and the South Sandwich Islands. Cambridge, UK. The UN Environment World Conservation Monitoring Centre (UNEP-WCMC) is the specialist biodiversity assessment centre of