

Can a solar panel run a welder?

Batteries- The batteries store the power produced by the solar panels. You can tap into this power to run your welding machine. Inverter- This crucial component makes the vital DC to AC transformation of the power stored in the batteries. With AC power, you can run any electrical machine, including your welder.

Can a solar inverter run a welder?

Technically, you can run any welder size as long as you have enough solar power. Powerful solar panels and batteries are a given, but the welder will run only if the inverter can handle the power being supplied by the battery. Remember, solar panels charge the battery, the battery supplies the power to the inverter which goes into the welder.

Can a solar generator be used for welding?

A solar generator is more convenient to use for welding than a solar panel, as a single power station can generate up to 5000W. In contrast you have to install several solar panels to produce the power required by welding machines. There are a lot of different welding processes, so their power usage will vary.

What is solar welding?

Simply put, solar welding is using solar to run a welding machine. A welder can also run off a generator or the grid, but solar is exceptional for being cost-effective and environment-safe. As solar becomes more integrated into critical processes like welding, we have hope that it'll eventually power most of our everyday activities.

Can a solar welding machine run on a battery?

A running solar welding machine gets its power from the solar battery. It's only with a large battery that you'll keep your welder running for an extended period. Large batteries are also less prone to over-draining, which can easily happen if you use a low-capacity battery.

How much solar power does a welder need?

A 3000W solar generator or 7 to 8 x 300W solar panels can power a welding machine with five hours of sunlight. The welder power requirement formula is: $\text{Voltage} \times \text{amps} / \text{efficiency} = \text{watts} / \text{kilowatts}$ To give an example: $24\text{V} \times 150 \text{ amps} / .85 \text{ efficiency} = 4,235 \text{ watts}$ or 4.3kwh rounded off. A welder needs 4235 watts to

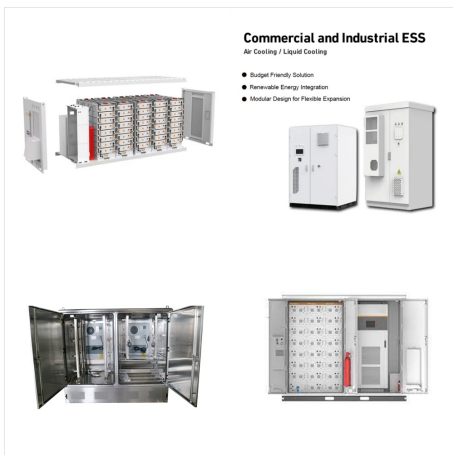
RUNNING A WELDER OFF SOLAR POWER



run for 1 hour.



But there is a difference while using inverter welders as compared to transformer welders. Inverter and Transformer Based Welders. Inverter welders require smaller transformers and less power, which means that they can usually be run off any kind of generator, but you should make sure if the inverter has a built-in voltage protection system.



No matter what power tool ??? or any electronic load for that matter ??? you want to run, knowing what elements affect solar power is essential. Factors That Affect Solar Panel Power Output. Solar panels can run just about any appliance or power tool, but everything depends on sunlight. Solar panels will cease to run once the sun goes down.



DIY Solar Products and System Schematics for a split second, when my A/C starts up, so I was concerned about running the welder. Maybe I should try it with the A/C turned off for good measure? or A/C (meaning grid power) off? gotbeans Solar Cooking Beans. Joined May 11, 2023 Messages 1,329 Location co/ar. Jul 24, 2024 #11 I even weld on

RUNNING A WELDER OFF SOLAR POWER



A 3000 inverter can run a 1000W jigsaw for 6 hours if the tool is used for 30 minutes in an hour. If you use the jigsaw for 15 minutes an hour, the runtime will be even longer. Circular saw, bench grinders and other power tools can be compared to running a welder on solar power in that the watts per hour does not tell the real story. A router



At my new house I have a 13.3kw of solar running through a 10KW solar inverter. My welder is an old Miller Inverter 3 phase that can push out 600A, however nearly all of the time I only use about 190-250A.



Understanding the Benefits of Welding with Solar Power As the world becomes more conscious of the impact of climate change, industries are increasingly looking for ways to reduce their carbon footprint. Welding, an essential process in many industries, can be a significant contributor to greenhouse gas emissions. However, with the advent of solar power ???

RUNNING A WELDER OFF SOLAR POWER



If you're in the business of welding, then you know that a welder is only as good as its power source. And while many welders can be plugged into a standard outlet, some jobs require a more powerful source of electricity ??? like a generator. But running a welder off a generator isn't as simple as just plugging it in.



Although the motorhome has a generator, unfortunately it won't produce 220 volts to run my mig welder. What I am trying to find out is if it is possible, and practical, to try to run my welder from my 12 volt solar battery bank. Here are the welder's specifications: Rated Electrical Input: 210-240 VAC; 50-60Hz; 22AMP Max Voltage at No Load



A running solar welding machine gets its power from the solar battery. It's only with a large battery that you'll keep your welder running for an extended period. Large batteries are also less prone to over-draining, which can easily happen if you use a low-capacity battery.

RUNNING A WELDER OFF SOLAR POWER



From my welding power electronics training it was repeatedly explained to us that you shouldn't run an Inverter Welder off a generator like that. The power output from the genny isn't going to be "clean". You'll run into issues with welds running off that generator along with unnecessary premature damage to the welder and/or the genny.



Are Welding Machines Safe To Run Off A Generator? Welding machines can be safely operated using a generator, provided certain precautions are taken. It is essential to consider the generator's capacity and ensure it can handle the power requirements of the welding machine, including wattage, amperage, and any additional power needs for

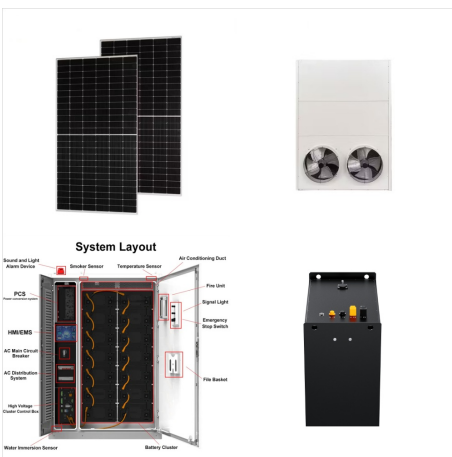


Either one will power the MM140, and also give you the option of stick welding. It will also run your other power tools. They are about the same size and weight as some generators that can power the MM140, even though it may cost a little more it will expand your welding capabilities.

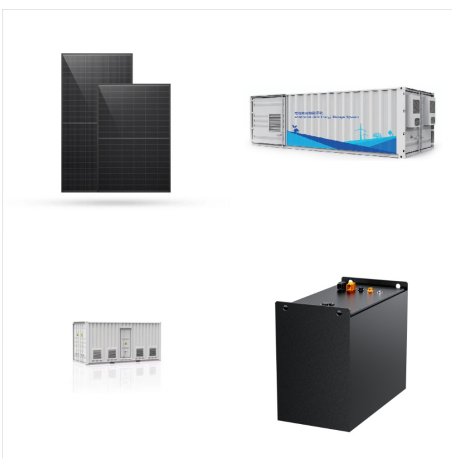
RUNNING A WELDER OFF SOLAR POWER



A 5000-watt generator can adequately power a welder, considering the welder's specific power requirements. Typically, light to medium-duty welders need about 5000 to 7000 watts. However, precise power requirements should be ???

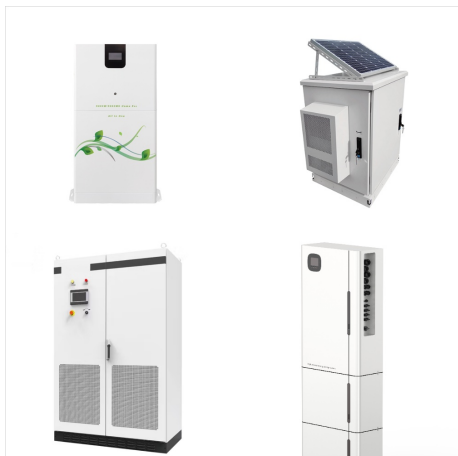


Electroweld is the exclusive distributor of SOLAR welding machines in the Philippines. These machines are made in Taiwan using only top-quality materials and the most advanced IGBT technology. Designed to be energy-efficient, our models are safer and easier to operate than the traditional types.



I did run my 120V MIG welder one single time on my XW+6848. My understanding is that welding is just about the hardest application you can put on an inverter, and I was scared to death something would be fried. I can run my 225 on the 13kW off grid set up, but I wouldn't try pushing 200A on a single 5kW inverter, I would want a pair of

RUNNING A WELDER OFF SOLAR POWER



Yes but this tells my mind nothing about how to run a TV, fan and pc off solar electric, or a 2000w power inverter, solar controller and battery, and makes it hard for my mind to comprehend when the video is about a 600w inverter. Once my mind comprehends, I can do it repetitive.



Pretty much the title. I have a 120v Lincoln LE31MP and I use it a lot. I have a lot of batteries and a lot of panels, completely offgrid. I'm looking at a Sol-Ark or the eg4 version as an upgrade, but want to make sure I can run my welder with it. Thanks so much!



Please bear with me as I figure this out. We're making a move to a property that will be completely off-grid (the cost of running power line is roughly \$20k), so I am 99% decided to just go with a solar system. I understand the principles, however my only experience with off-grid power is running a 4kW generator to my travel trailer.

RUNNING A WELDER OFF SOLAR POWER



Generators with a low THD rating (6% or less) will have "relatively" clean power and will thus be suitable for running inverter welders. A generator with a high THD rating (more than 6%) is likely to be a low quality unit and should not be used to run inverter welders. See also "Tips on purchasing suitable generators" - point 6 below ???.



Running a welder off a generator can be a great way to take your welding and fabrication operations on-the-go, enabling you to work outdoors or in areas not directly connected to a power outlet. Inverter welders can be vulnerable to power surges, and running an inverter welder off a generator can leave it open to further risks from unstable



The only option I can think of is the Fronius accupocket 150 which is a battery welding machine, can run 70 3/32 electrodes from battery power only, or only requires a very small generator to run via the charger, so a decently sized solar charger might actually be able to run it as you don't need to be able to deliver the full current draw, but

RUNNING A WELDER OFF SOLAR POWER



22.3K Solar Electric Power, Wind Power & Balance of System; 3.5K General Solar Power Topics; 6.7K Solar Beginners Corner; 1K PV Installers Forum - NEC, Wiring, Installation; 2K Advanced Solar Electric Technical Forum; 5.5K Off Grid Solar & Battery Systems; 424 Caravan, Recreational Vehicle, and Marine Power Systems; 1.1K Grid Tie and Grid



I would like to be able to run welders, grinders, air compressor, drill press, table saw, well pump, etc, and hopefully even a hydraulic two post lift. Bear in mind, this equipment won't be used all day every day, just sporadic, hobbyist use. A generator to supplement power during heavy loads and cloudy days is probably going to be a thing.



I need a portable system to run my welder. Info - I have no electrical or electronics education. In the welder's instructions, it states that I will need Clean, 230v (208v-240v) and it draws 30Amps. It says, if I am using a generator, it needs to ???

RUNNING A WELDER OFF SOLAR POWER



I run a huge tig welder off my house with grid tie in solar Reply reply Top 2% Rank by size . More posts you may like Related DIY Crafts and DIY forward back. r/18650masterrace. r/18650masterrace. This subreddit has been taken private from June12 in support of the strike on reddit to protest the upcoming changes to the pricing structure for the



Welder power requirements are wonky. (110v welder) that I can run off my 4000 watt generator, but not well as it will continually trip the 15 amp breaker. I have a bigger 180 weldpac (220v) that I CAN run off of my 5000 watt generator, but it really only welds the same as with house current on the 8500 watt generator despite the amperage



"A generator" isn't specific enough. It needs to be able to supply enough input current to exceed the demands of the welding machine, not just meet it. Otherwise you're likely to have performance issues with both. It also needs to have the right voltage and/or phase configuration. A lot of the larger sized welding machines run on 3phase power.