

Why is my Ryobi 18v battery not charging?

The reason for this can sometimes be reversed, and sometimes it is a lost cause. A Ryobi 18v battery will typically stop charging if it's too hot or too cold, if one (or more) of the individual battery cells has an internal short, or if the overall voltage of all the cells has fallen below the minimum charge threshold of the charger.

How do I fix a Ryobi battery that won't charge?

As a Ryobi battery owner, it's important to know how to fix a ryobi battery that won't charge. This is a problem that can occur for a variety of reasons, but luckily it's an easy issue to troubleshoot and repair. First, make sure that the battery is properly seated in the charger. If it's not, that could be why your battery isn't charging.

Are Ryobi 18V batteries reliable?

Ryobi 18V batteries are considered of excellent value for home handymen due to their biggest range and good build quality. However, over time, genuine Ryobi lithium 18V batteries may experience issues with charging. If your Ryobi battery shows a full charge but doesn't function properly, the issue lies within the battery itself.

Do Ryobi batteries come with a warranty?

Ryobi equipment and batteries come with a three-year warranty. If your Ryobi 18V Lithium-Ion Battery is less than three years old, you might be in luck. Before you proceed with any attempts to fix the battery yourself, it's worth checking if your battery is still under warranty.

Are Ryobi batteries rechargeable?

Ryobi batteries are rechargeable, and they come in different voltages. The most common Ryobi batteries are 18-volt and 24-volt. This type of battery are used in Ryobi power tools such as drills, saws, and impact drivers. What Are the Purpose of Ryobi Battery? The purpose of a Ryobi battery is to power the company's line of cordless tools.

What if my Ryobi battery is overcharged?

In extreme cases of over-discharge, it's suggested to use a healthy 18V battery pack to "jump-start" and get its charging circuit back online. Battery check - is a must! Ryobi 18V batteries are great because they use a

# RYOBI LITHIUM 18V BATTERY WON'T CHARGE



series of smaller cells to power the battery.



Pair this Lithium-ion HIGH PERFORMANCE battery with any 18V ONE+ HP tool to leverage high performance brushless motors and advanced electronics for more power, longer runtime and the overall best experience on the 18V ONE+ system. This 18V ONE+ 4Ah Lithium-ion HIGH PERFORMANCE Battery is backed by the RYOBI 3-Year Manufacturer's Warranty and

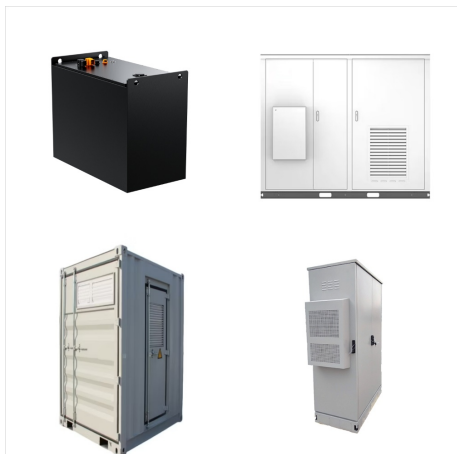


A Ryobi 18v battery will typically stop charging if it's too hot or too cold, if one (or more) of the individual battery cells has an internal short, or if the overall voltage of all the cells has fallen ???



I have an 18v 4Ah battery (RB18L40) which I use in an impact driver (R18IDBL). Today I went to check the battery level by pushing the battery indicator button and then all 4 lights started flashing continuously (picture and video).The battery doesn't work in the impact driver anymore and I can't get the lights to stop flashing.

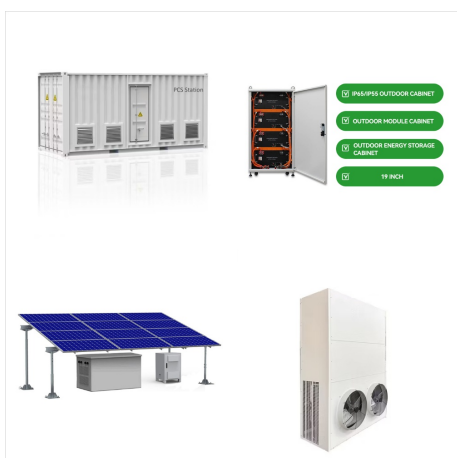
# RYOBI LITHIUM 18V BATTERY WON'T CHARGE



A few common problems that you might have to face with the Ryobi 18-volt Lithium battery are as given below: Skip to content This issue can be a bit more serious and points toward hardware problems with the battery. It won't present itself at random and shows that the unit either got damaged during delivery or during installation in a



Ryobi 18v. Lithium says fully charged but no energy. Ask Question Asked 9 years, 4 months ago. Modified 8 years, 4 months ago. When I place it on the charger, the charger says that the battery is fully charged, but the battery's power indicator button doesn't cause it to light up and I can't get it to run a flashlight.



The Ryobi iLithium batteries, like other lithium-ion batteries, have been known to have a number of problems. Typical reasons why Ryobi 18V batteries don't charge are cells that have been over-discharged. When this happens, the battery enters a state known as sleep mode. Above we have explained about fixing the Ryobi battery that won't

# RYOBI LITHIUM 18V BATTERY WON'T CHARGE



1. The LED Lights on a Ryobi Battery Charger.  
Before getting to what a flashing red light on a Ryobi battery charger means, let's cover the different LED lights on a Ryobi battery charger first to ensure there's no confusion. Depending on the model, your Ryobi battery charger might use an 18V Lithium-ion, or Nickel Cadmium batteries, and some units can charge both.



18V ONE+ 4AH LITHIUM BATTERY. Register Products Account; My Products; Sign Out; Language; Products; This 18V ONE+ 4Ah Lithium-ion Battery is backed by the RYOBI 3-Year Manufacturer's Warranty and includes (1) PBP005 18V ONE+ 4Ah Lithium-ion Battery and Operator's Manual. Charger sold separately. See More. \$99.00 PBP005 Add To Cart



Resetting the battery can also help resolve issues such as incorrect battery capacity readings, poor power output, or a battery that won't charge at all. Memory effect: Lithium-ion batteries, including Ryobi 18V batteries, are not prone to the memory effect that was common with older battery technologies. However, in rare cases, the



# RYOBI LITHIUM 18V BATTERY WON'T CHARGE



Sometimes your battery is so depleted that the safety circuits in the PCB will not allow it to charge properly. You still need to take the battery apart though. In order to do this take a known good battery, or even two 9V batteries in series, attach a wire from the Positive (Red) side to the Positive side of one of the cells.



To figure out how your Ryobi 18v battery won't charge or has lost its ability to hold a charge, you will need to perform some tests with the help of your Ryobi tools and an alternate power supply. One of the common reasons why a Ryobi 18V battery won't charge could be because it has gone into what's known as "sleep mode." Sleep mode

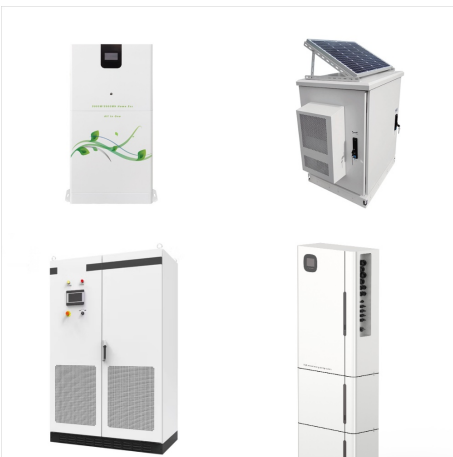


If you find yourself in a situation where your Ryobi battery won't charge, don't worry ??? there are several things you can do to fix the problem. Depending on your type, you should receive a reading between 12V and 18V. If you're getting any more or less than this range then it's likely that it won't charge due to a faulty

# RYOBI LITHIUM 18V BATTERY WON'T CHARGE



When the battery can no longer power your tools, it's time to recharge it. But what happens when the battery won't charge? Let's find out. Step 1: Check the Battery and Charger Connections. The first step in troubleshooting a Ryobi battery that won't charge is to ensure that the battery and charger are properly connected. Follow these

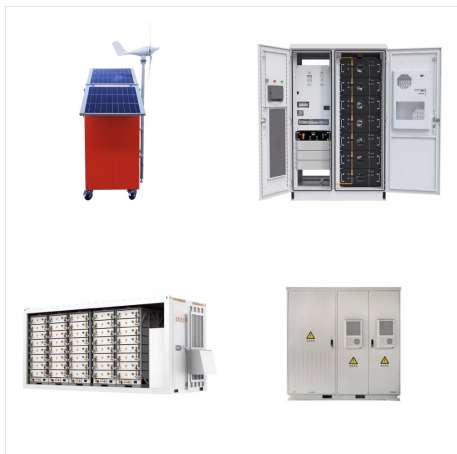


RYOBI introduces the 18V ONE+ Lithium-Ion Charger. The 18V ONE+ Lithium-Ion Charger charges all RYOBI 18V Lithium-Ion Batteries, and can charge a 1.5 Ah Battery in as little as 45 minutes. The indicator lights show the status as the battery is charged and maintained. A convenient temperature LED indicates when a battery is too hot or too cold



Lithium batteries are sensitive to high temperatures, which can affect the charging process. If the battery or charger becomes too hot during charging, it may prevent the battery from charging effectively. To avoid overheating, make sure to charge your lithium battery in a well-ventilated area and keep it away from direct sunlight or heat sources.

# RYOBI LITHIUM 18V BATTERY WON'T CHARGE



RYOBI 18V ONE+ Lithium-Ion Charger (612) \$44 And. 98 Cents / each. Add To Cart. Free Delivery . Not Sold in Stores . Add To Cart. MAKITA 18V LXT (4.0 Ah) Lithium-Ion Battery BL1840B . The Makita 4.0 Ah battery offers maximum run time for prolonged, heavy-duty applications. 4.0 Ah battery offers 33% increased run time versus 3.0 Ah batteries



The battery should normally measure about 18V across the terminals (21V max). If it reads about 12V, then it is likely the battery protection circuit has activated because of cell imbalance. (Those were my symptoms.) Cell re-balance could also help if the battery isn't taking a full charge (not showing green on the fuel gauge button).



But if your Ryobi battery won't charge and you're getting the dreaded red blinking light, there are some things you can try. Going strictly by the book, that flashing red light means your battery is defective and won't hold a charge. In practice, a defective or dead battery is one of three possible causes for that red light that means

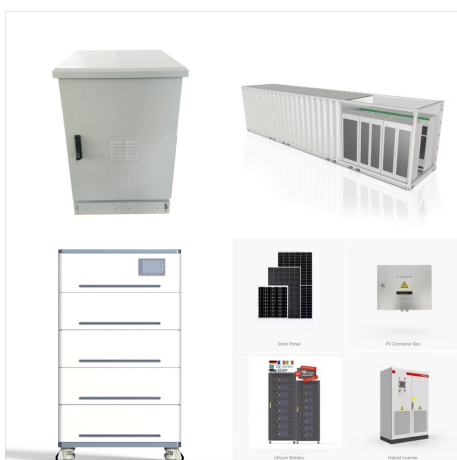
# RYOBI LITHIUM 18V BATTERY WON T CHARGE



This RYOBI 18V ONE+ Lithium-Ion 4.0 Ah Battery (2-Pack) and Charger Kit provides up to 3X more runtime compared to standard 18V lithium-ion batteries. These batteries are compatible with over 300 18V ONE+ Products to power through all types of projects. Built with professional grade lithium-ion cells these batteries provide fade free, cord-like power. They are engineered to ???



Fancy Buying 18V 6.0Ah P108 Battery Replacement for Ryobi 18 Volt Battery Lithium P102 P103 P104 P105 P107 P109 P122, Battery for Ryobi ONE+ Cordless Drill Tool (1Pack) 4.4 out of 5 stars 1,032 4 offers from \$2295 \$ 22 95



Finally, put your Ryobi battery back onto charge and allow it to fully charge. otherwise, you won't be able to attach them! Soldering the new cells to the old cells, it may be necessary for you to use hot glue to ensure that the connection between the cells is stable. Battery 8.0AH For RYOBI P108 18V 18Volt One Plus High Capacity



# RYOBI LITHIUM 18V BATTERY WON'T CHARGE



The troubles could range from a damaged battery to external complications that have nothing to do with your lithium battery. It will take some trial and error and a bit of troubleshooting to get to the root of the problem. If you're experiencing issues with your lithium batteries, here are a handful of things you should check first.